

**Central Brass Company, Inc.**

3325 S. Garfield Ave.  
Commerce, CA 90040  
(800) 321-8630  
www.centralbrass.com

# INSTALLATION

## Tools:



Adjustable Wrench



Plumbers Putty



Teflon Tape



Rags



## Model Number: 1172, 1173 Series

### Warnings and Notes:

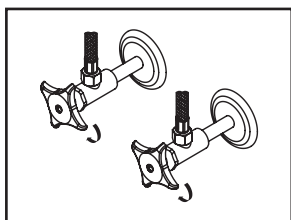
Check with local plumbing code requirements before installation.

This product should be installed by a local listed plumber.

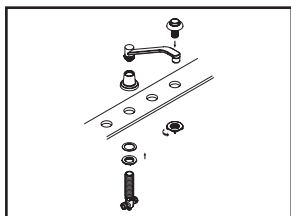
**Do not use plumbers putty on threads.**

## Installation Steps:

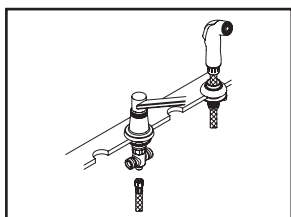
### Two Handle Kitchen Faucets



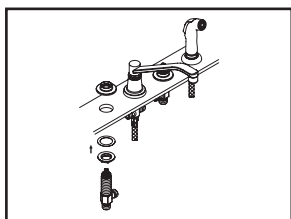
(1) Shut off water supplies. Remove old faucet. Clean mounting surface in preparation for new faucet.



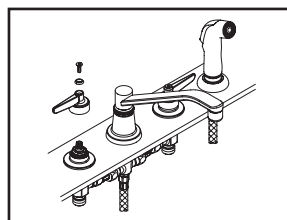
(2) Thread locknut with gasket onto center tee and insert center tee through mounting hole from underneath of the sink, while holding the center tee, thread spout escutcheon from top of center tee, adjust the center tee's height to install spout by tightening spout nut to center tee, tighten the locknut from underneath of the sink with the help of a wrench and go to step (4). For 1173 series, place side spray holder in position on the sink, tighten locknut from underneath of the sink to secure side spray holder.



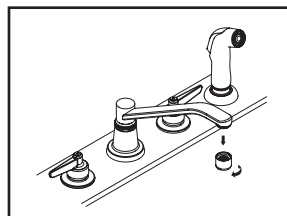
(3) Lead side spray hose through side spray holder. Connect side spray hose to center tee.



(4) Thread locknut with gasket onto corner valve, insert corner valve through mounting hole from underneath of the sink, while holding the corner valve, thread handle escutcheon from the top of the corner valve, adjust corner valve's height then tighten locknut from underneath with the help of a wrench. Repeat the same procedure to install the other corner valve.



(5) Connect both corner valves outlet to center tee with supplied flex hose. Installed handle to corner valve by tightening handle screw. Connect water supply lines to both inlet of corner valve.



(6) Important: After installation is complete, remove aerator. Turn on water supplies, turn on handles to allow both hot and cold water to run at least one minute each. While water is running, check for leaks. Release the handle and replace aerator.

**Central Brass**  
C O M P A N Y, I n c.

For more care information or trouble shooting inquiries about your Central Brass product, please call:

**Central Brass Company, Inc.** (800) 321-8630

Monday-Friday 8 AM to 8 PM EST (5 AM to 5 PM PST)

www.centralbrass.com