


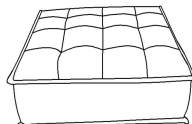


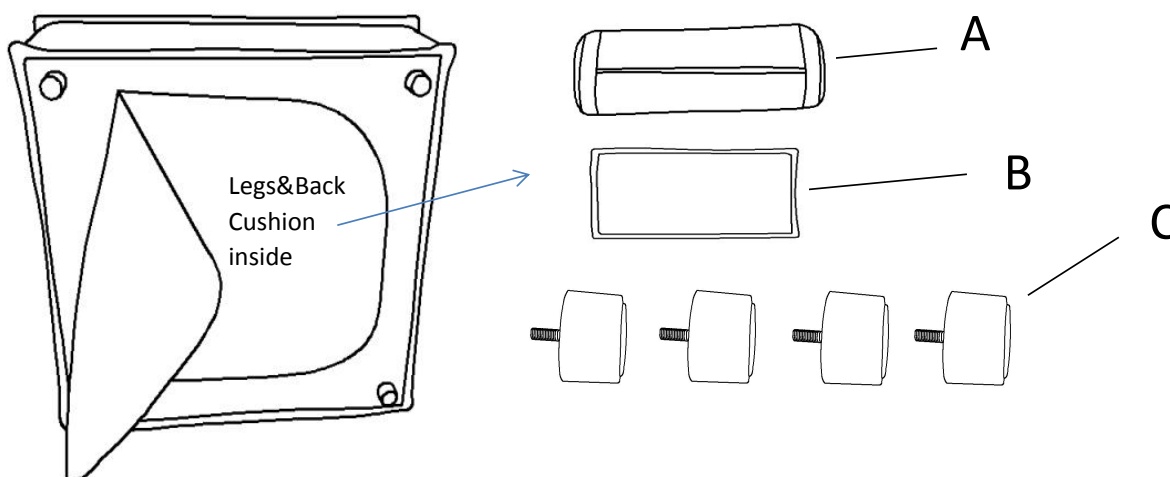
**NOTE:** Please identify and locate all assembly parts (see parts list) before discarding any packing materials. Some parts may have become loose during transit.

### COMPONENT LIST

NO.	DRAWING	QTY	DESCRIPTION
A		1	PILLOW
B		1	BOLSTER
C		4	PLASTIC LEG
D		1	SEAT

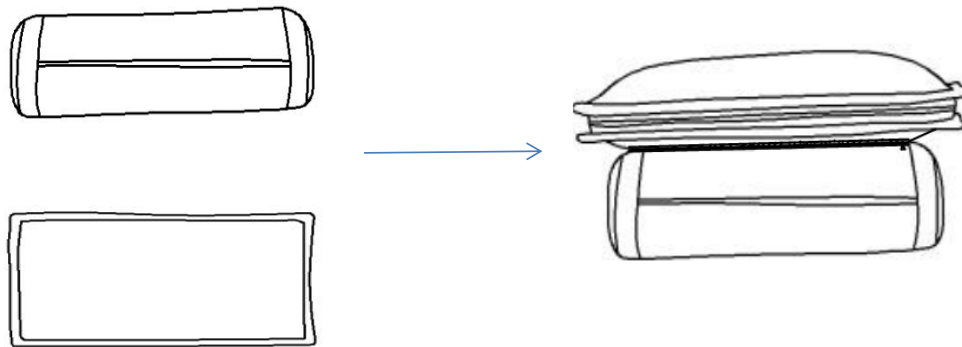
### STEP# 1

Parts are stored inside the bottom of the seat. Please take out for assembly.



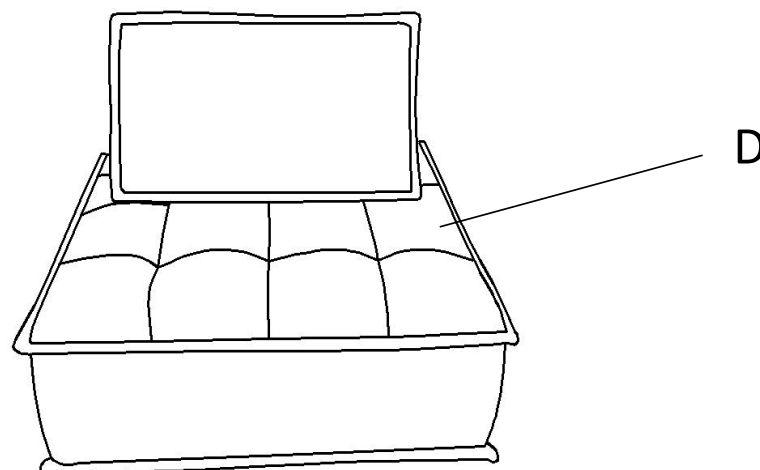
## STEP# 2

Zip the pillow and bolster as follow.



## STEP# 3

Place bolster and pillow on seat and fix properly.



## Care Instruction for 100% Polyester Furniture.

In order to maintain the original appearance of your 100% Polyester match furniture, please follow below simple care procedures:

- Avoid exposing furniture directly to sunlight or heating and air conditioning outlets. Sunlight and/or exposure to heating and air conditioning outlets will fade/damage 100% Polyester. Do not place your 100% Polyester furniture too close to windows, radiators, or vents.
- Vacuum or wipe with a soft brush to remove dust.
- Do not pull out hang tag. Use scissors to cut off the plastic string to remove the tag.



**For items use on wooden floor, hard surfaces or carpets, it is recommended to Install protective pads under all legs and supports to avoid/prevent from damages/scratches and discoloration.**