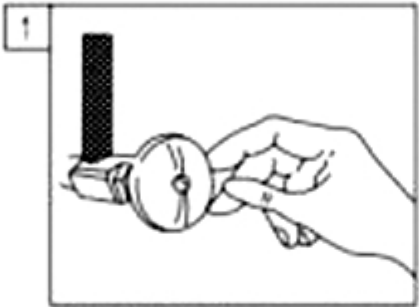
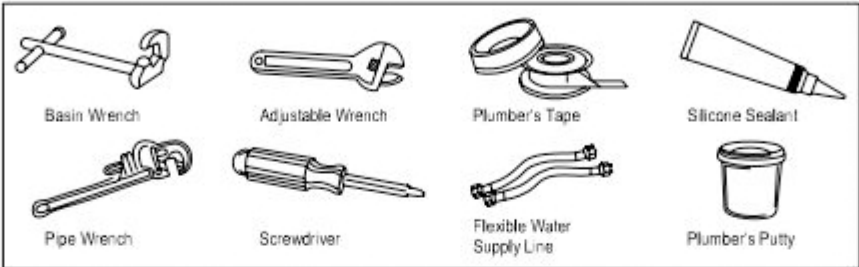


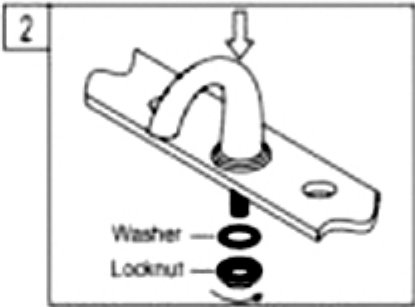
Reno 5pcs Bathtub Faucet in Antique Brass Deck Mount Bath Mixer Tap with Hand Shower



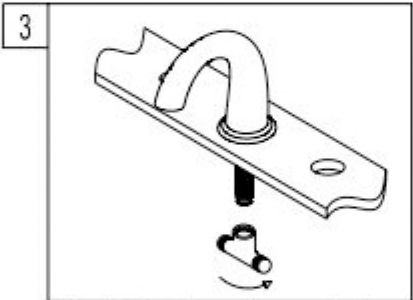
INSTALLATION INSTRUCTIONS



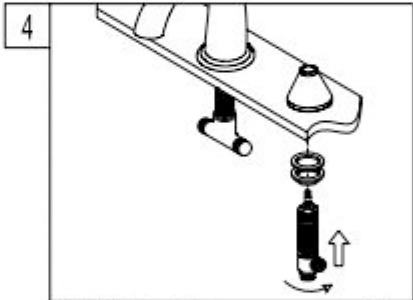
1. Shut off hot and cold water supply under sink. Plug sink drain with cloth to avoid losing small parts. Remove old faucet.



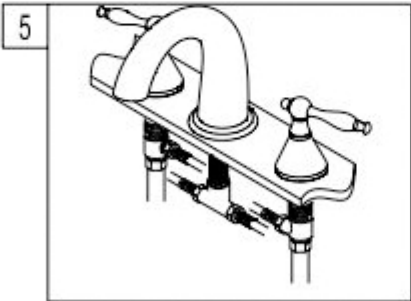
2. Install new faucet spout through the center hole of sink. Place mounting washer on spout shank and attach with spout shank locknut.



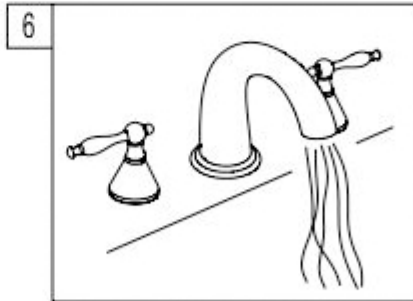
3. Attach Spout Tee on the spout shank.



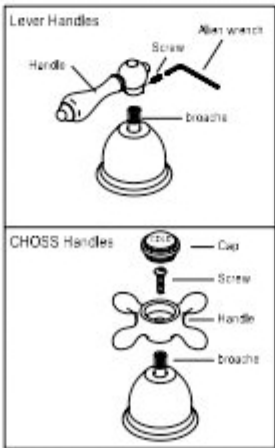
4. Hold the handles in proper position. Make sure that the top of the faucet handles is 5/8" above the top of the sink. Mount the metal washer and locknut from underneath the sink. Then reposition escutcheons as necessary to a desired height.



5. Connect the flexible tubes from the supply shank side port to the Spout Tee. Also reattach the supply lines, turn on the water supply, and



6. turning on your new faucet for the first time. Allow both hot and cold water to run for one minute.



ASSEMBLY INSTRUCTIONS FOR HANDLES

Lever Handles :

1. Put the lever handles on the broaches and Tighten using the allen wrench provided.

CROSS Handles :

1. Remove the insert caps from the cross Handles.

2. Put the cross handles on the broaches and Then tighten the screws. Insert the caps on The cross handles.

This General diagram and installation instructions are not intended for any specific model, but is presented as a general guideline for Installations!