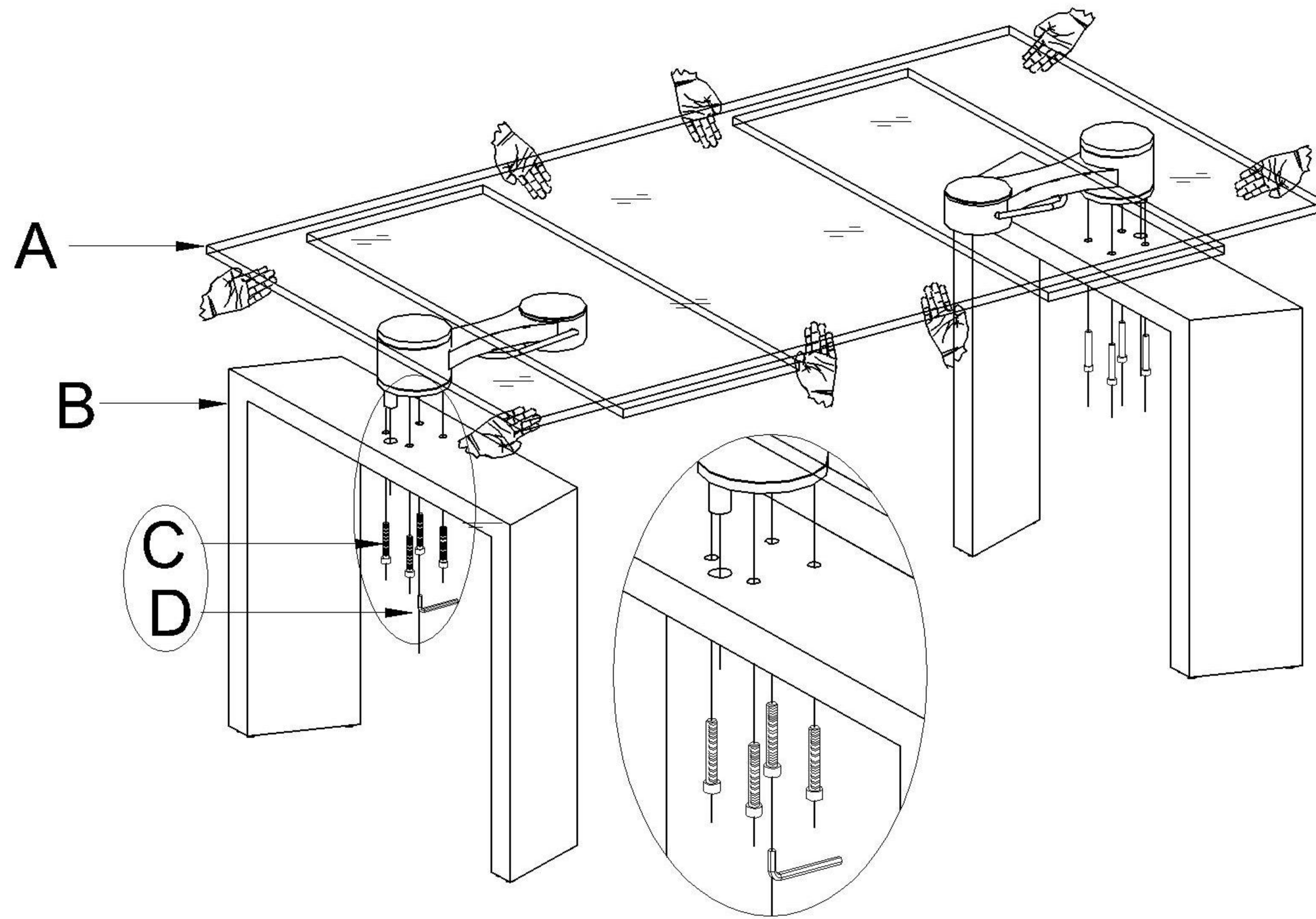
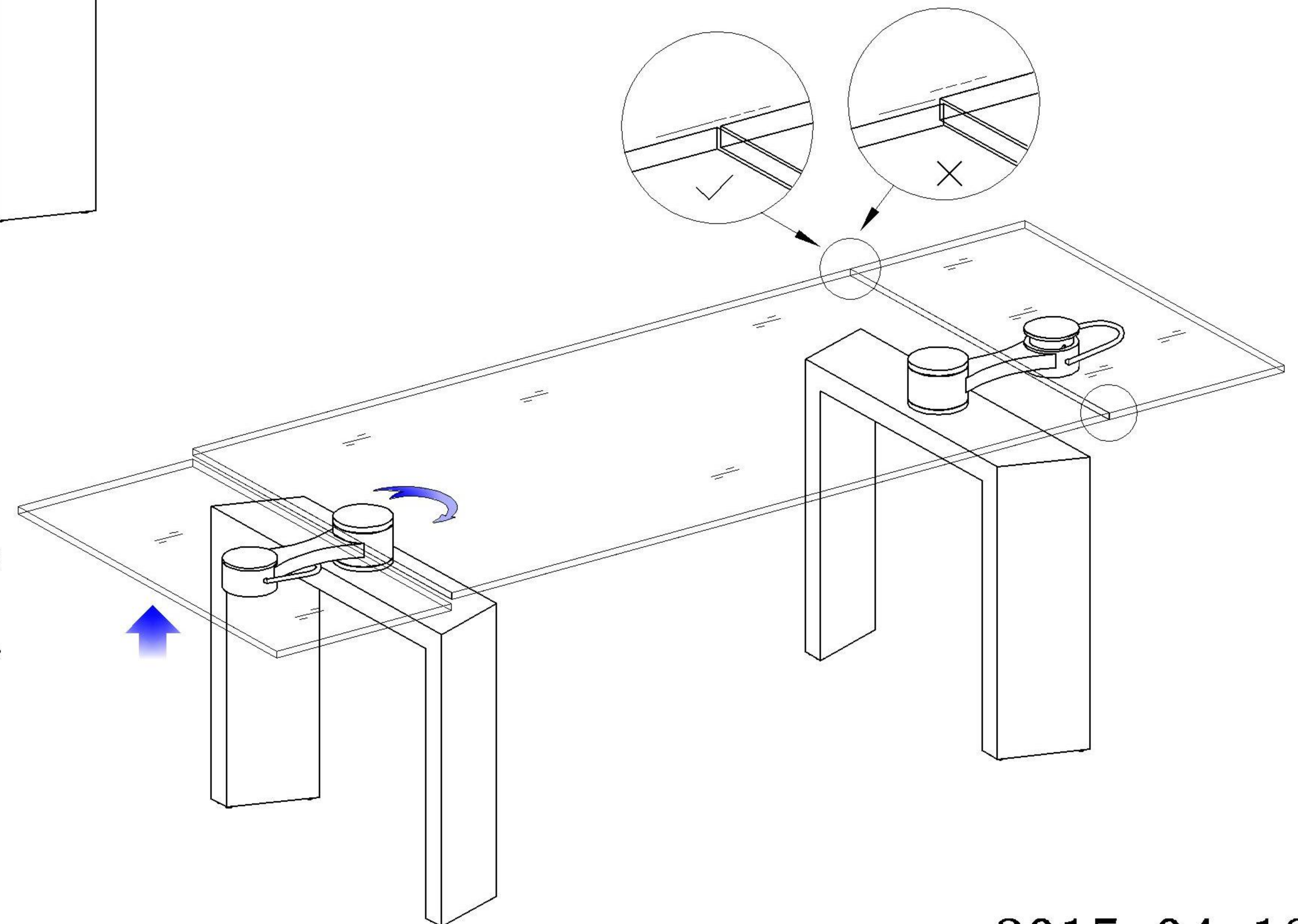


STEP 1: Put the glass top on the legs and half tighten the 8 screws.

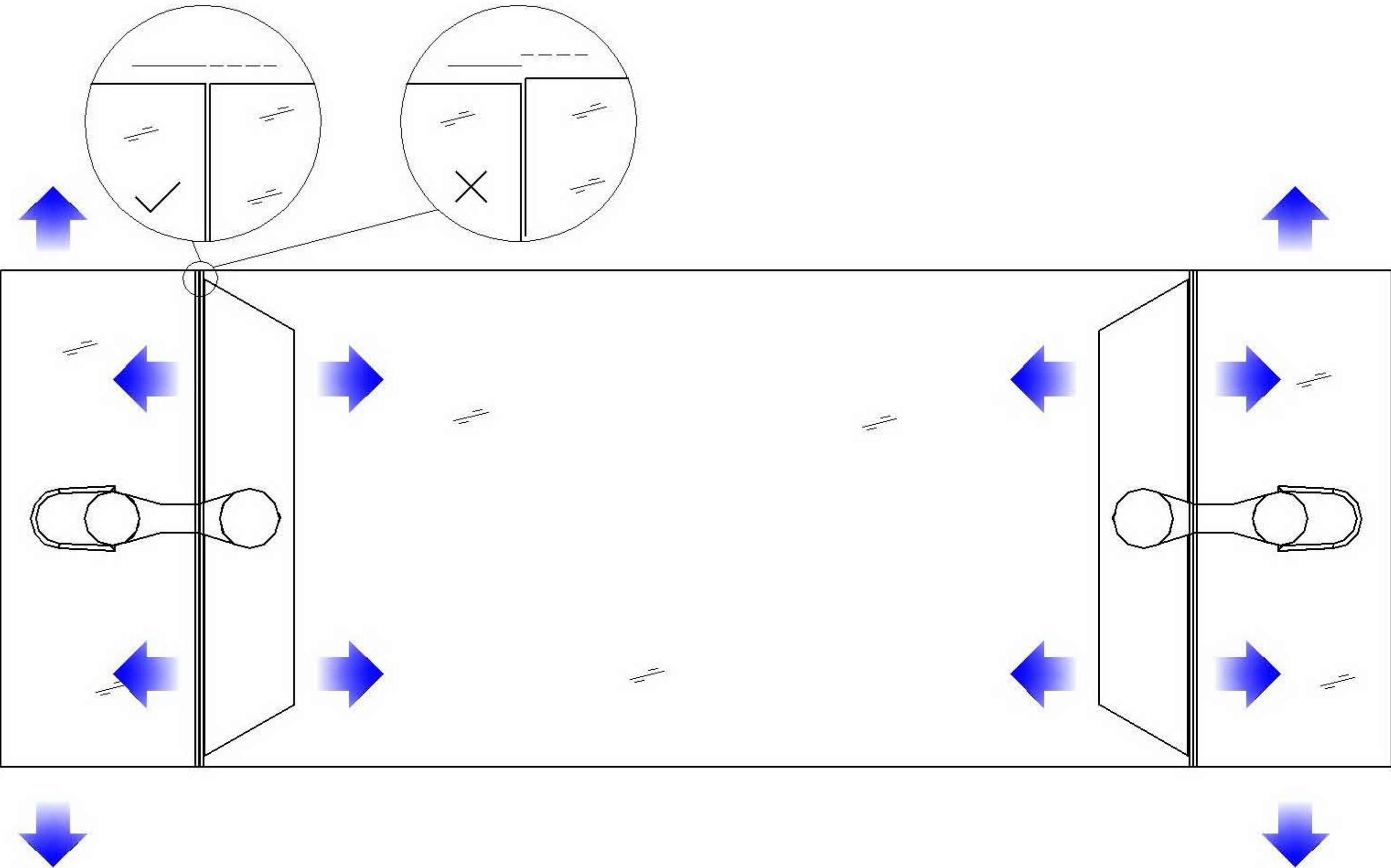


STEP 2: Rotate out the glass leaf, and slightly rotate the legs to make the leaf to be parallel to the main glass top with suitable gap and then raise the leaf up.



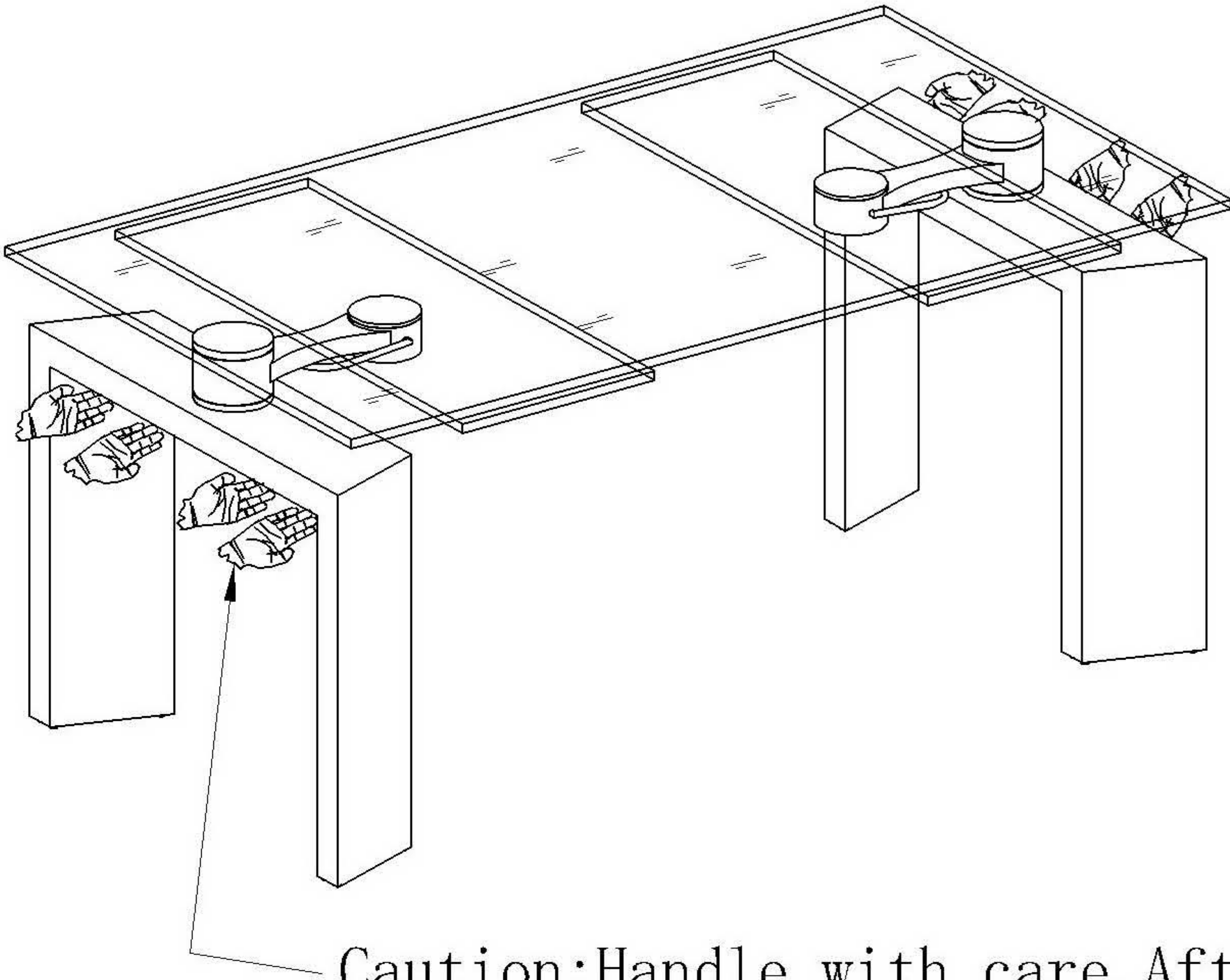
CAUTION: This glass top is very heavy and needs to be handled by 4 people. When assembling be sure to secure the legs in position so they can not tip over. The legs can not support the weight of the table on the side, the legs must be upright at all times. Do not lift the table by the glass, it must be lifted by the legs all the times.

Caution: Overtightening can damage the table leg and mechanism.

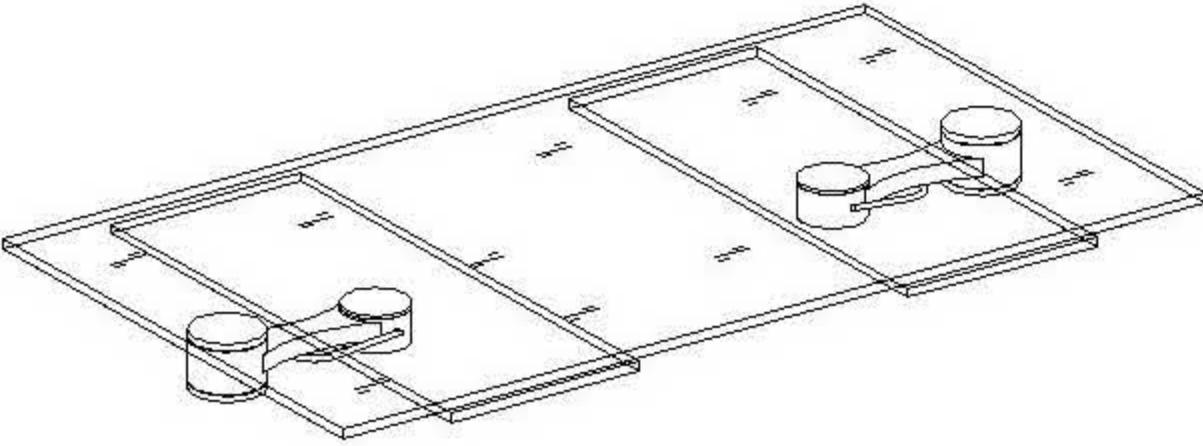
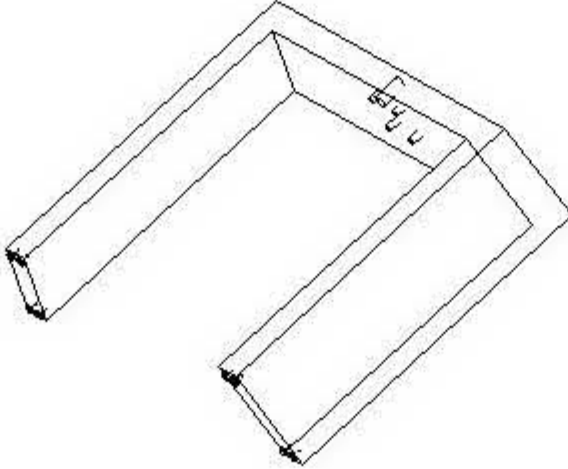

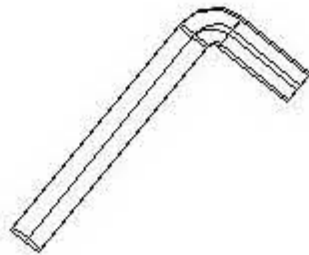


STEP 3: Adjust the leaf glass to be lined up well with the glass main top. After this, tighten the 8 screws. The glass leaf will have 2mm wide tolerance with the glass main top it means glass leaf each side might have 1mm wider or shorter then the main top.

STEP 4: FINISH



Caution: Handle with care. After assembly, please move the legs but not carry the glass top to avoid bad damage of the table.

A	B	C	D
			
1PCS	2PCS	8PCS	1PC