

HEPBURN 60" DOUBLE SINK BASE CABINET

ARIEL

T060D



BASE CABINET DIMENSIONS

60" W x 21.5" D x 34.5" H

FEATURES

- Solid wood frame & plywood panels
- Dovetail drawers and joints
- Soft closing doors & drawers

HARDWARE FINISHES



Brushed Nickel



Satin Brass



Matte Black



Polished Chrome

AVAILABLE COLORS



White

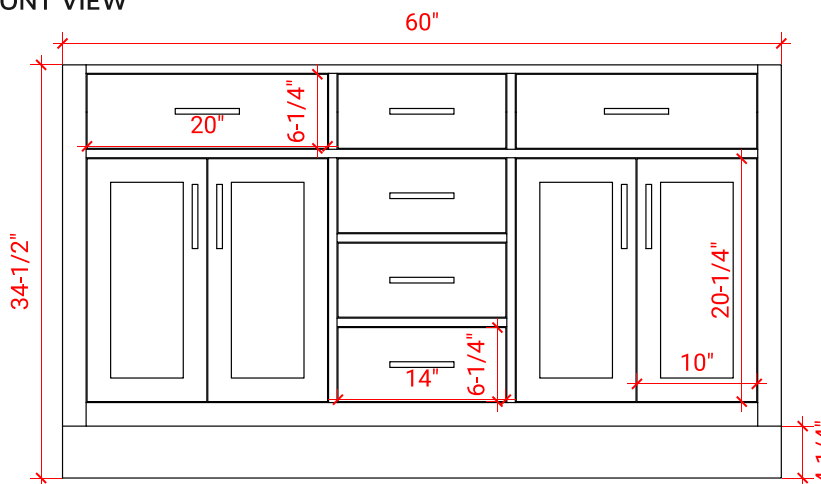


Grey

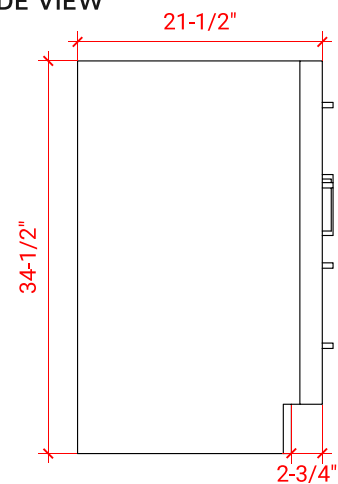


Midnight Blue

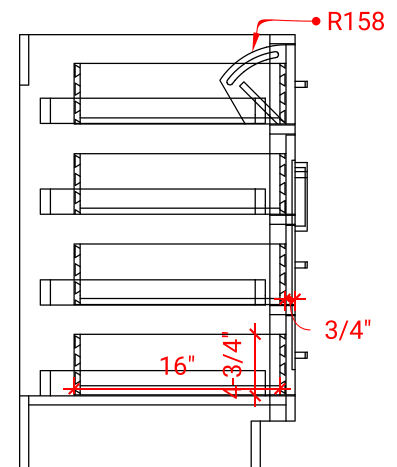
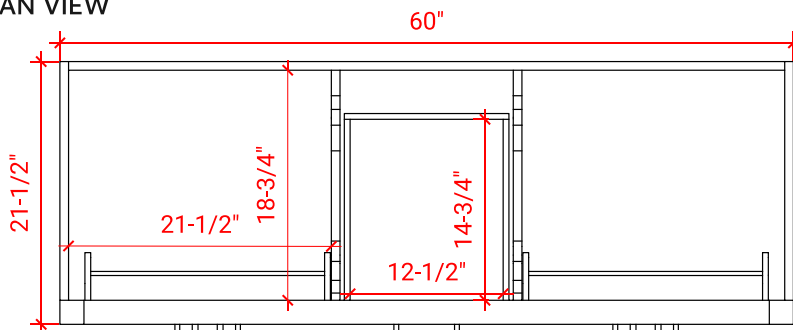
FRONT VIEW



SIDE VIEW



PLAN VIEW



ARIEL

60.25" W x 22" D x 1.5" H

- Solid countertop with mitered edges & seams
- Undermount white oval sink
- Pre-drilled for 8" widespread faucet

- Countertop
- Matching Backsplash
- Oval Sinks

[illegible]

Technical drawing of a mechanical part. The part has a vertical section on the left with a jagged break line. The main body is a horizontal plate. The top surface is dimensioned as $3/4"$ from the top edge to the start of a vertical section. The bottom surface is dimensioned as $3/4"$ from the bottom edge to the start of a vertical section. The vertical section is a curved fillet with a radius dimensioned as $R2$. The total height of the part is dimensioned as $1-1/2"$. The part is shown in a perspective view.

Isometric view of a rectangular plate with the following dimensions and features:

- Overall length: $60\frac{1}{4}"$
- Overall width: $22"$
- Overall thickness: $1\frac{1}{2}"$
- Top surface features:
 - Two circular holes, each with a diameter of $4"$.
 - Four small circular holes, two on each side of the larger holes.
- Bottom surface features:
 - Two circular holes, each with a diameter of $4"$.
 - Four small circular holes, two on each side of the larger holes.