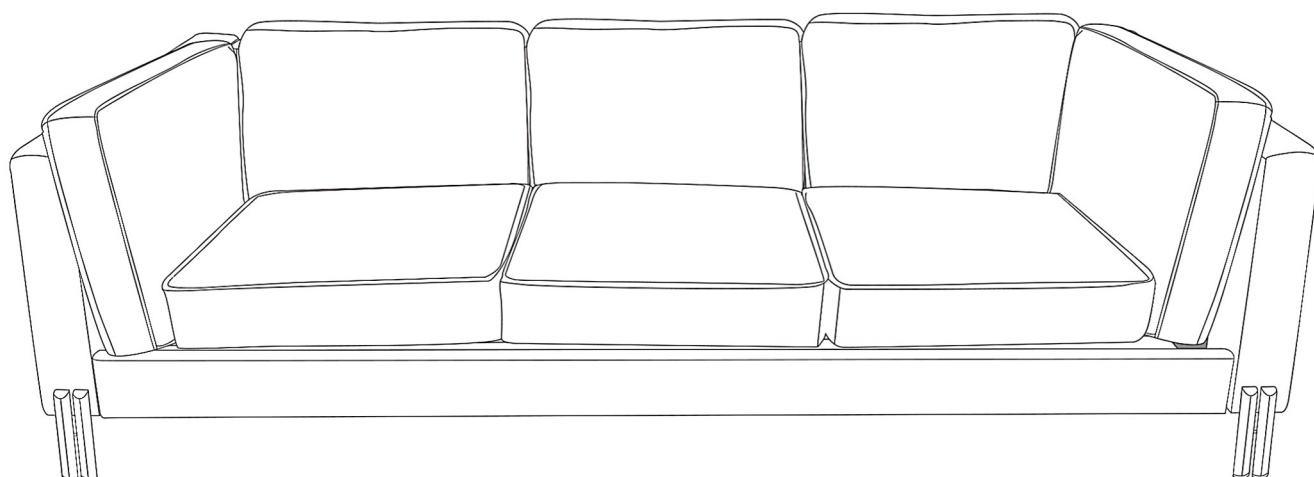


ASSEMBLY INSTRUCTIONS



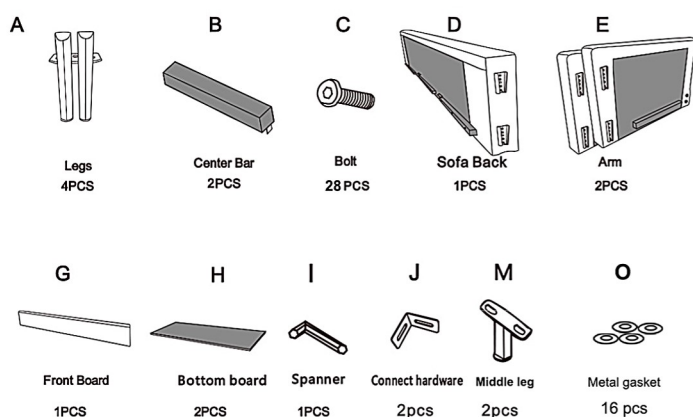
Attention:



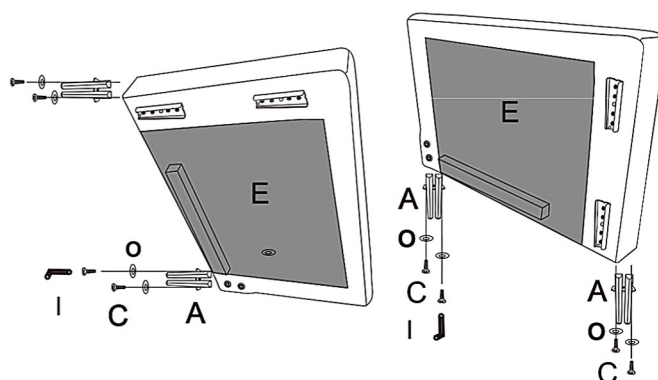
*Please don't move the sofa after installation. If you need to move the sofa, please disassemble the sofa first, and re-install it at your destination.

*Please keep this installation instruction for your future use.

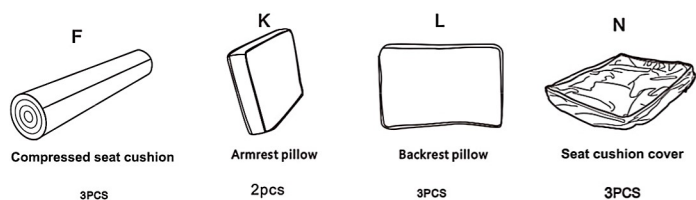
PACKAGE 1



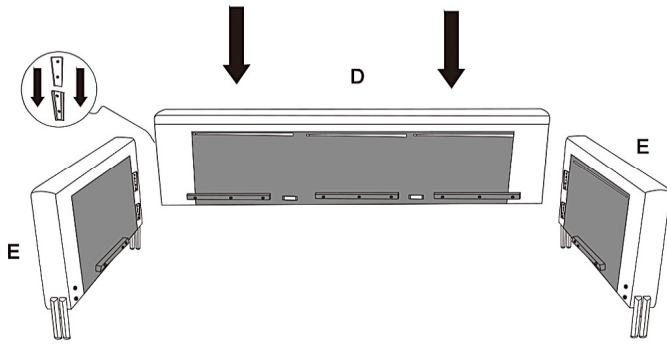
STEP 1



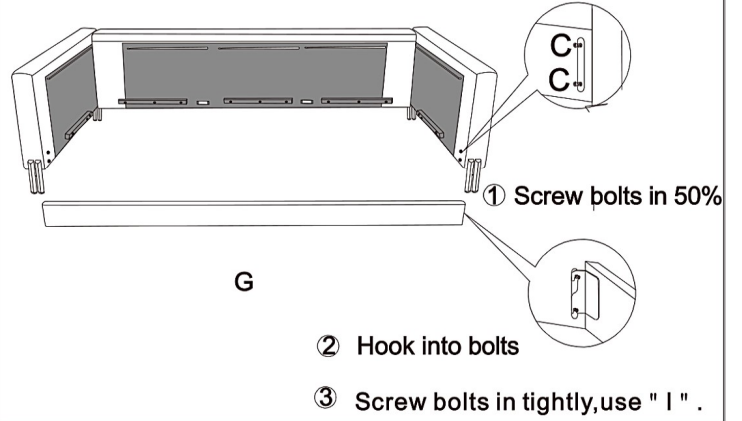
PACKAGE 2



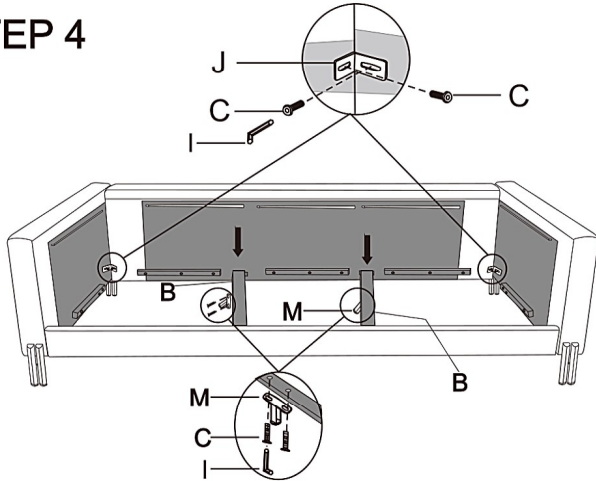
STEP 2



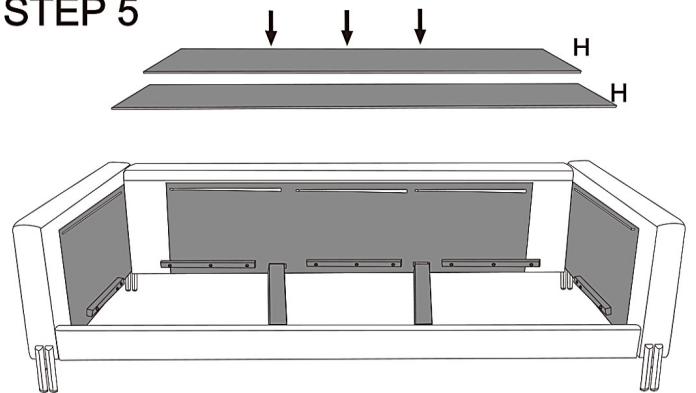
STEP 3



STEP 4



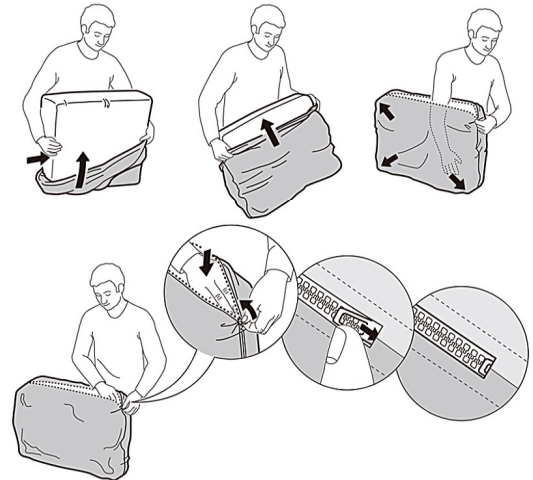
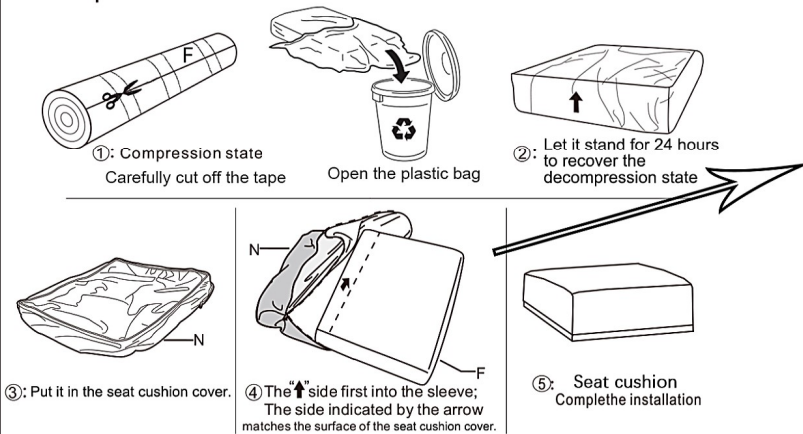
STEP 5



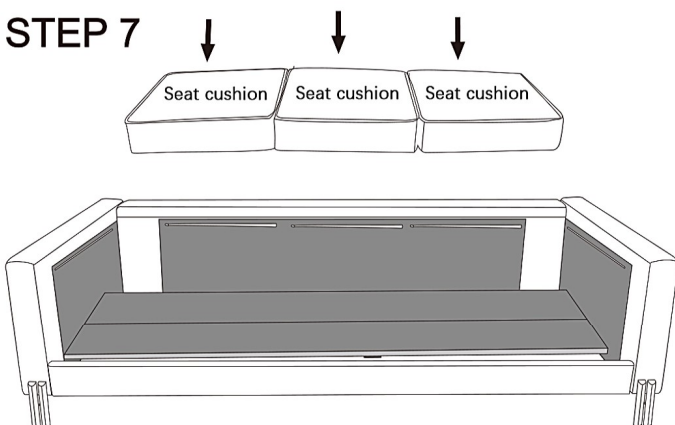
STEP 6

Compression use of Seat cushion.

How to tidy sofa seat cushions?



STEP 7



STEP 8

Slide the seat down and ZIP it up

