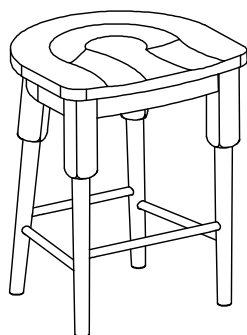


# ASSEMBLY INSTRUCTION

Item No : D884-64

Description : COUNTER STOOL



## IMPORTANT NOTE :

- Place all wooden parts on a clean and smooth surface such as a rug or carpet to avoid the parts from being scratched.
- Check to be sure that you have all parts and hardware.
- Remove all wrapping materials, including staples & packing straps before you start to assemble.
- Do not tighten all screws / bolts until all completely assembled.
- Keep all hardware parts out of reach of children.

### PART LIST

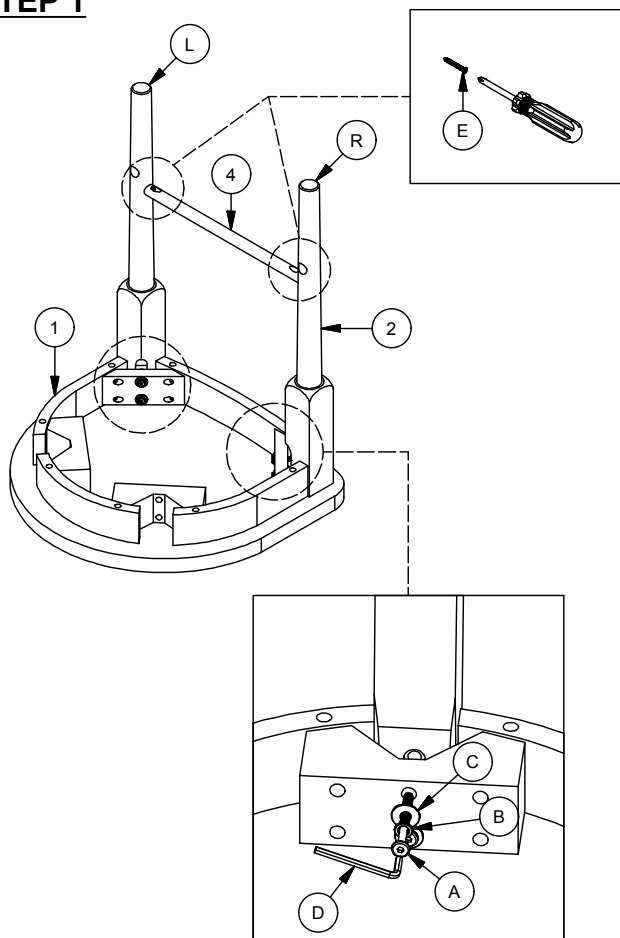
NO	DESCRIPTION	QTY/PCS
1	SEAT WITH FRAME	1 PC
2	FRONT LEG (L&R)	2 PCS
3	BACK LEG (L&R)	2 PCS
4	FRONT STRETCHER (LONG)	1 PC
5	SIDE STRETCHER (MEDIUM)	2 PCS
6	BACK STRETCHER (SHORT)	1 PC

### HARDWARE LIST

NO	DESCRIPTION	QTY/PCS
A	BOLT M6 x 60	8 PCS
B	SPRING WASHER 1/4" x 13	8 PCS
C	FLAT WASHER 1/4" x 19	8 PCS
D	ALLEN KEY M4 (LONG WITH BALL)	1 PC
E	CSK SCREW M4 x 32MM	8 PCS

REMARKS : YOU WILL ALSO NEED A PHILIP SCREW DRIVER (NOT PROVIDED)

### STEP 1



### STEP 2

