

HEPBURN 54" SINGLE SINK BASE CABINET

ARIEL

T054S



BASE CABINET DIMENSIONS

54" W x 21.5" D x 34.5" H

FEATURES

- Solid wood frame & plywood panels
- Dovetail drawers and joints
- Soft closing doors & drawers

HARDWARE FINISHES



Brushed Nickel



Satin Brass



Matte Black



Polished Chrome

AVAILABLE COLORS



White

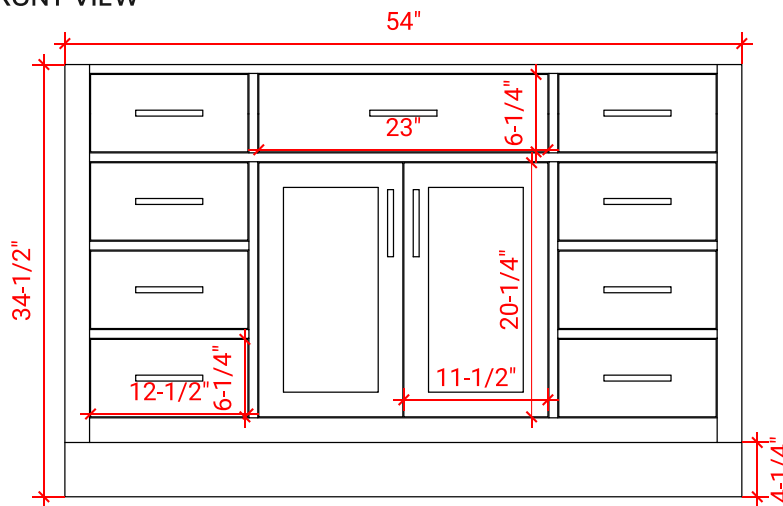


Grey

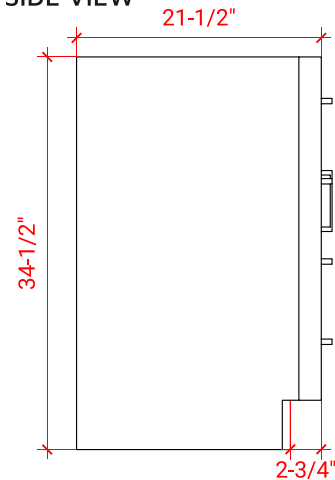


Midnight Blue

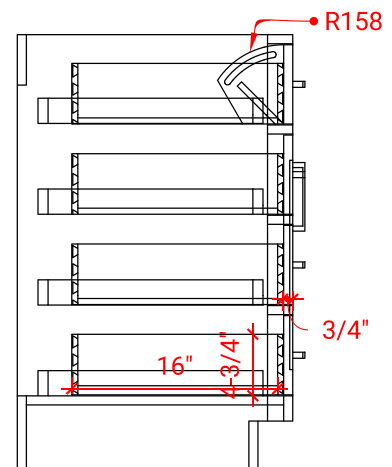
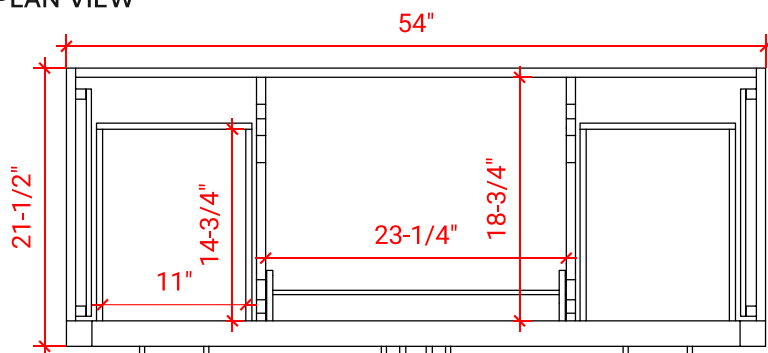
FRONT VIEW



SIDE VIEW



PLAN VIEW



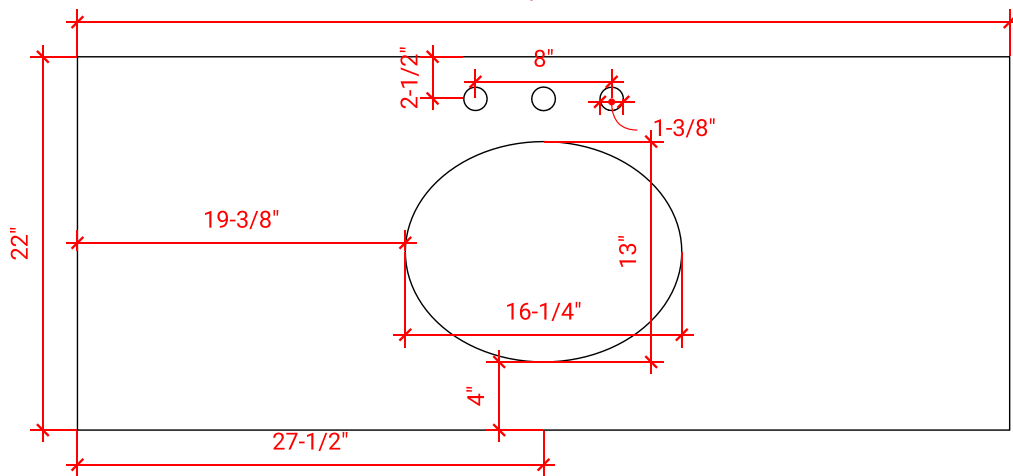
ARIEL

54.25" W x 22".D x 1.5" H

- Solid countertop with mitered edges & seams
- Undermount white oval sink
- Pre-drilled for 8" widespread faucet

- Countertop
- Matching Backsplash
- Oval Sink

54-1/4"



Technical drawing of a mechanical part. The part has a vertical section on the left with a jagged break line. The main body is a horizontal plate. The top surface is dimensioned as 3/4" from the top edge to the start of a vertical section. The bottom surface is dimensioned as 3/4" from the bottom edge to the start of a vertical section. The right end of the part is a vertical section with a radius R2. The total height of the part is dimensioned as 1-1/2". The width of the part is dimensioned as 3/4".

Isometric view of a rectangular plate with the following dimensions and features:

- Length: $54\frac{1}{4}"$
- Width: $22"$
- Thickness: $4"$
- Central circular hole with a diameter of $11\frac{1}{2}"$.
- Three small circular holes are located near the center of the plate.