



SUITABLE COOKING STYLE & FEATURES:

○ ————— ○ ————— ●
Minimal **Everyday** **Heavy-Duty**

950 CFM

POWERFUL SUCTION

6 SPEED SETTING

DELAY AUTO SHUT-OFF

STEAM CLEANING

TOUCH SCREEN PANEL

UC-PS38**CONTEMPORARY STYLE UNDER CABINET****SIZES: 30"****PRODUCT DESCRIPTION**

Bring a professional-grade range hood to your home kitchen with Hauslane. We know every meal matters, whether it's made in a family kitchen or 5-star restaurant. Our UC-PS38 stainless steel range hood features an innovative panel design and cutting-edge steam cleaning function.

WHAT'S INCLUDED

Stainless Steel Grease Tray (1), Water Tray (1), Stainless Steel Panel (1) and Top 6" Round Exhaust Adapter (1)

OVERALL PRODUCT DIMENSIONS (WxDxH)

UC-PS38SS 30": 29 ¾" x 23" x 8 ¼"

WARRANTY

2-Year Limited Warranty and Lifetime Warranty on Motor

**FEATURES & BENEFITS:****HEAVY DUTY COOKING:**

Suck away obnoxious odors and dangerous fumes with this restaurant-quality range hood, backed by dual motors. Fits 6" duct.

COMPLETELY CAPTURE SMOKE AND ODORS:

Most cabinet range hoods can't reach cooking fumes coming from your front burners. But with Hauslane's unique panel design, you can capture smoke from everywhere.

QUIET OPERATION:

This vent hood comes with 6-speed setting. Whether its quiet operations or heavy duty cooking, we got you covered!

CONVENIENT STEAM CLEAN FUNCTION:

Turn water into steam to dissolve even the coldest, oldest grease with the steam clean function. Once grease dissolves, the unit sprays water to clean the range hood thoroughly.

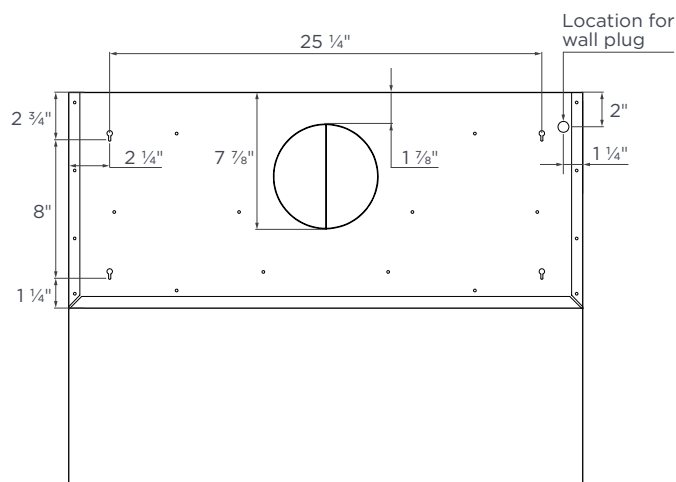
MATCH YOUR KITCHEN LIGHTING:

The bright LED lights with GU10 base conserve energy without compromising on light. Unlike other kitchen hoods, you don't have to request new bulbs from the manufacturer. The GU10 lights can be found in any local hardware store, so you can change the light color to coordinate with your kitchen.

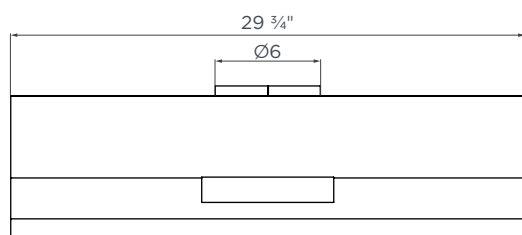
ADA COMPLIANT PRODUCT:

This ADA compliant range hood can be operated via remote control (HLRC1, sold separately), enhancing safety for users of all abilities.

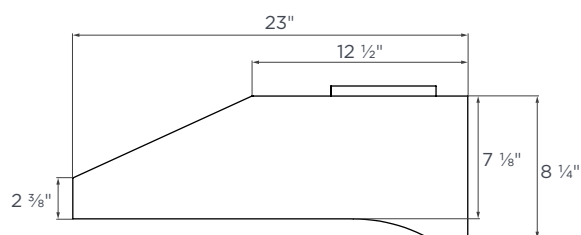
TECHNICAL DRAWING



TOP



FRONT



SIDE

SPECIFICATIONS

SIZE	30"
STYLE	Under Cabinet
RECIRCULATING	N/A
CLEANING FUNCTION	Yes
NOISE LEVEL	1.5 to 7.0 Sones
LIGHT COLOR TEMP.	Warm / 3000 Kelvin
LUMENS	200
LIGHT BULB	3W LED (GU10 Base)
LIGHT INTENSITY	1 Level
DELAY FUNCTION	N/A
CONTROL	Touch Panel
SPEED SELECTIONS	6 Levels
SPECIAL FEATURES	Steam Cleaning Function / ADA Compliant (Remote Sold Separately. P#: HLRC1)

COOKING STYLE	Heavy-Duty
EQUIVALENT AIRFLOW	950 CFM
LABORATORY AIRFLOW	525 CFM
TOP VENTING	6" Round
REAR VENTING	N/A
MOTOR	Dual
AMPERAGE	1.4
WATTAGE	168
VOLTAGE	120
CONNECTION	Plug-In
GROSS WEIGHT, LBS.	54
NET WEIGHT, LBS.	47.8
DIMENSIONS (WxDxH)	29 3/4" x 23" x 8 1/4"