

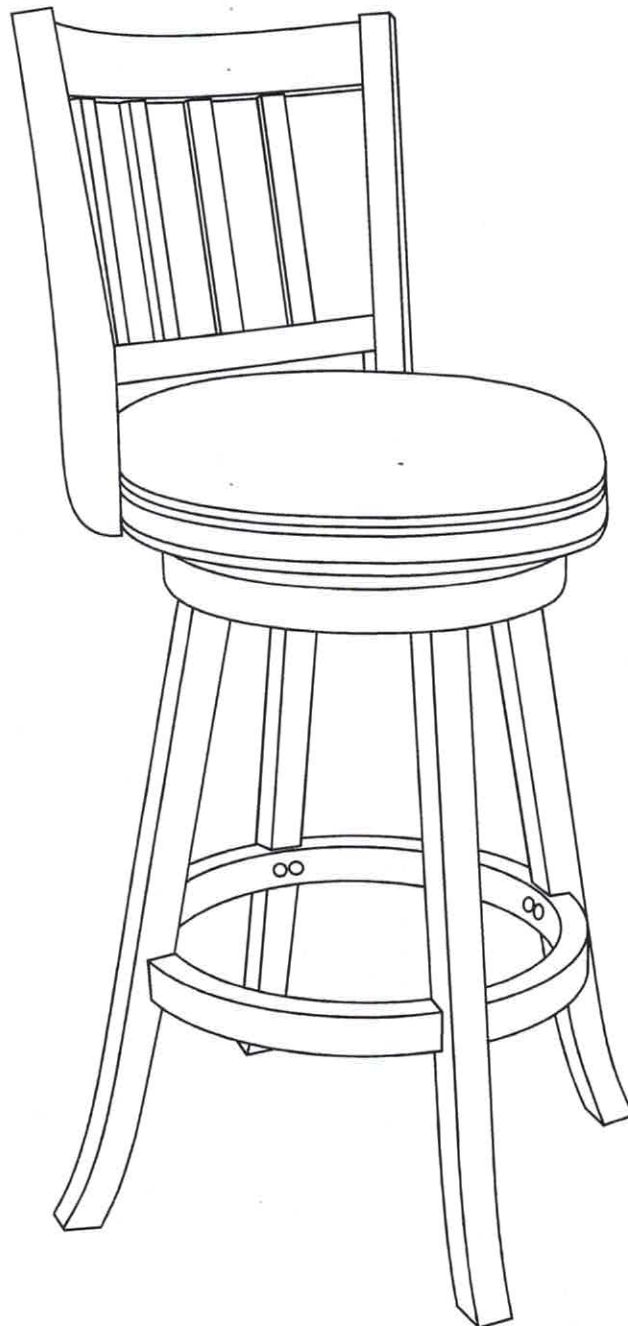
76324, 76329, 76424, 76429



***Boraam Industries***

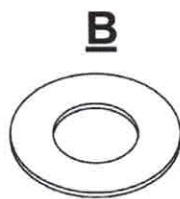
**SHELDON SWIVEL STOOL**

ASSEMBLY INSTRUCTIONS

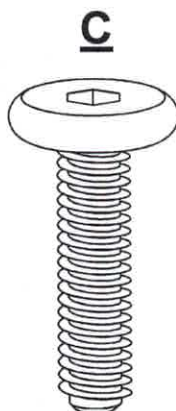




22 PCS



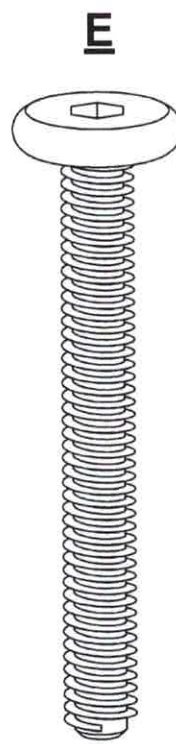
26 PCS



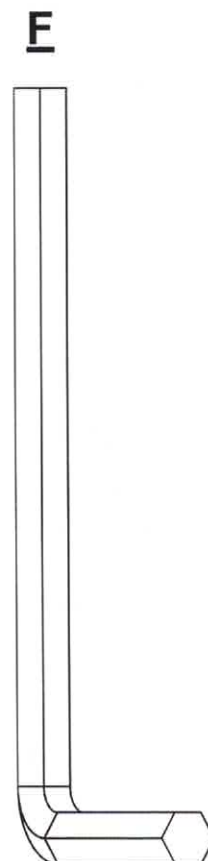
4 PCS



16 PCS



6 PCS

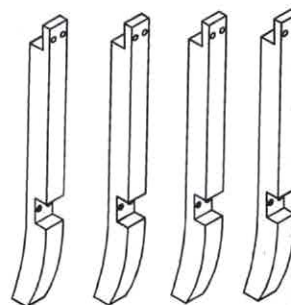


1 PC

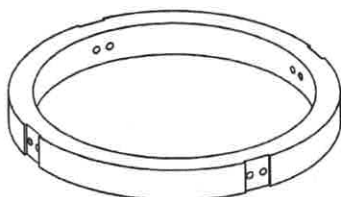
1



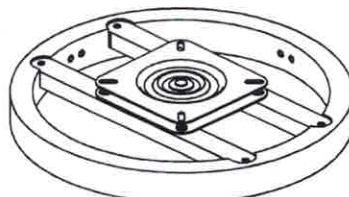
2



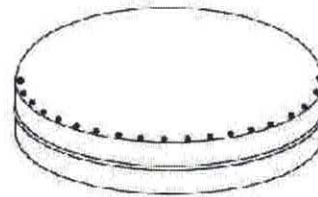
3



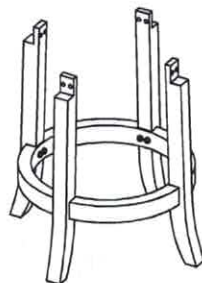
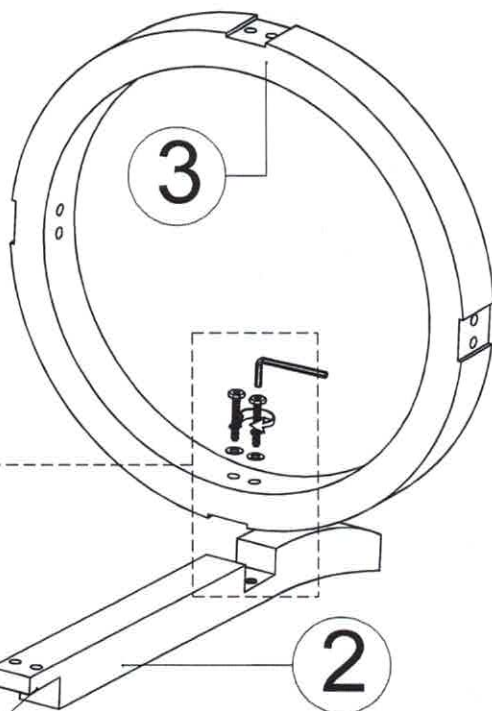
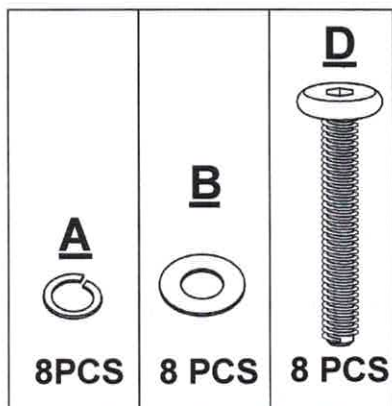
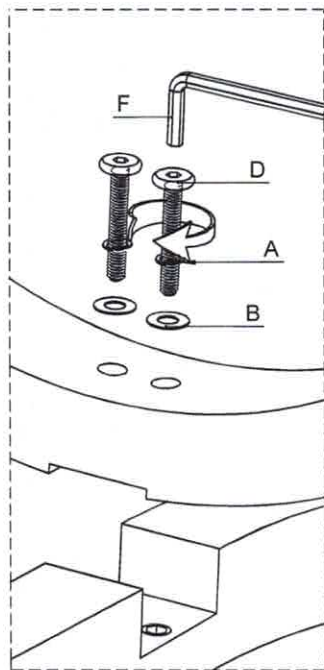
4



5

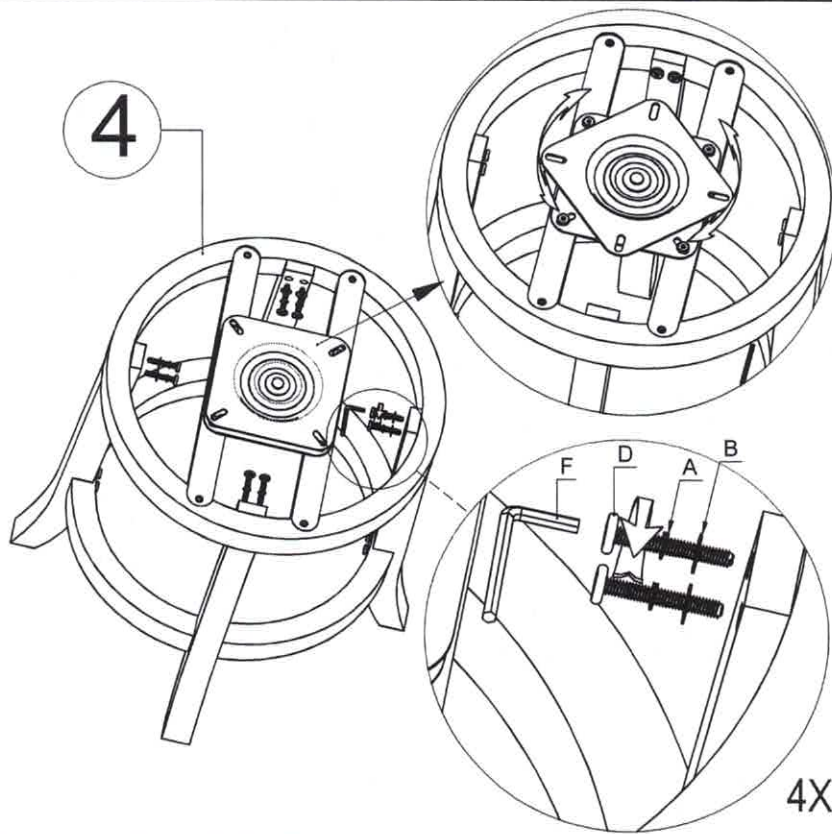
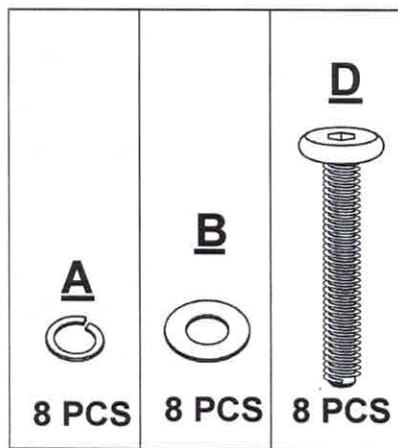


# 01



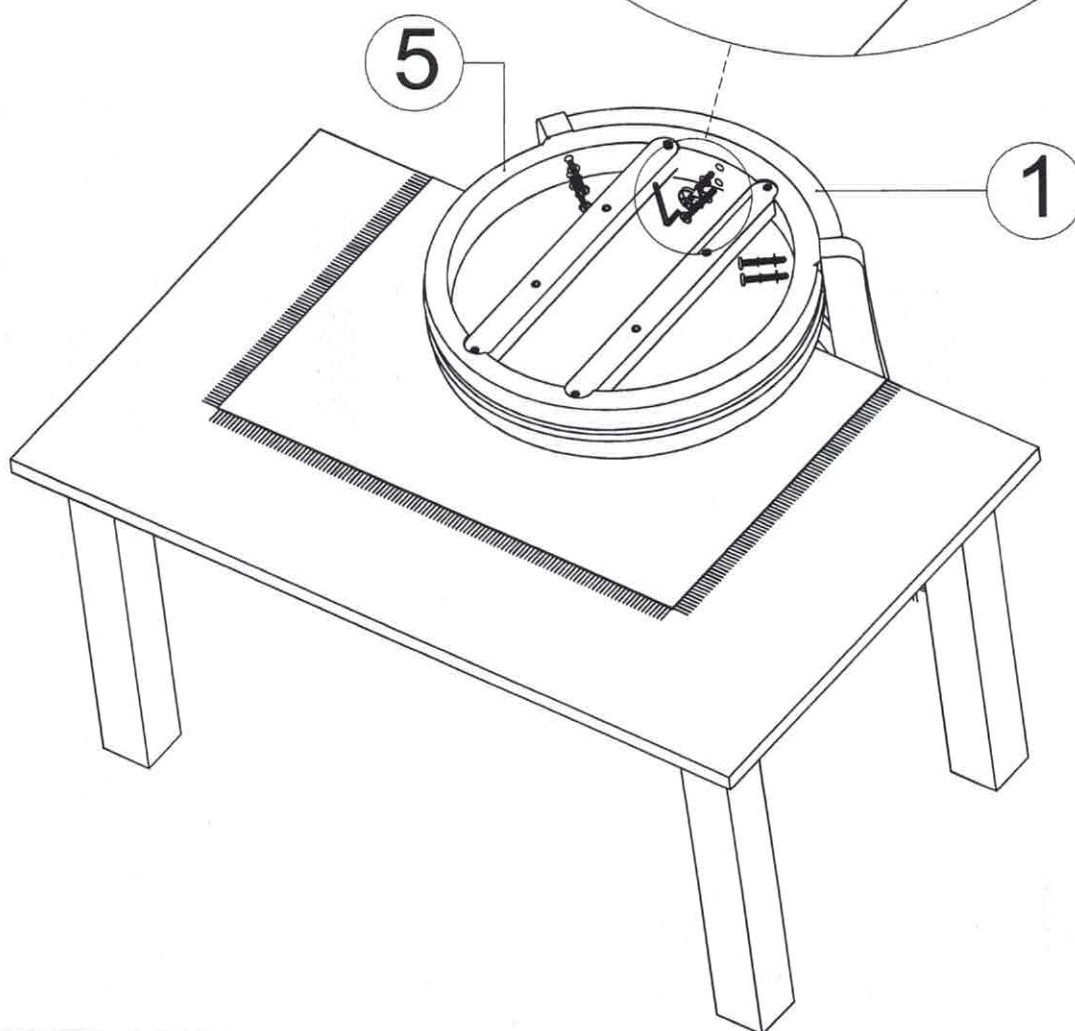
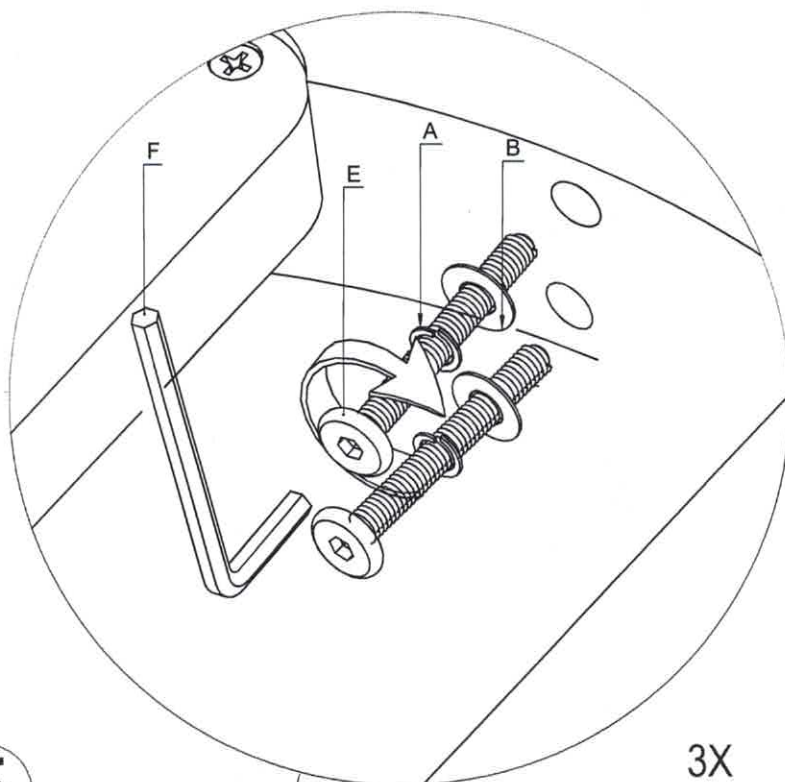
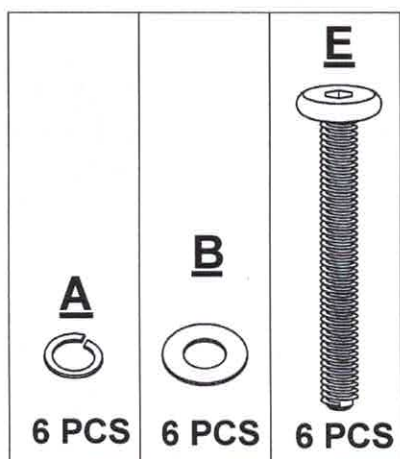
DO NOT TIGHTEN BOLT COMPLETELY.

# 02



TIGHTEN BOLT COMPLETELY.

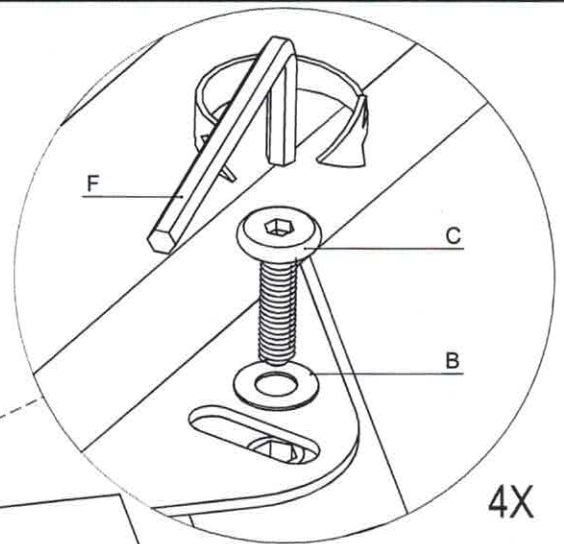
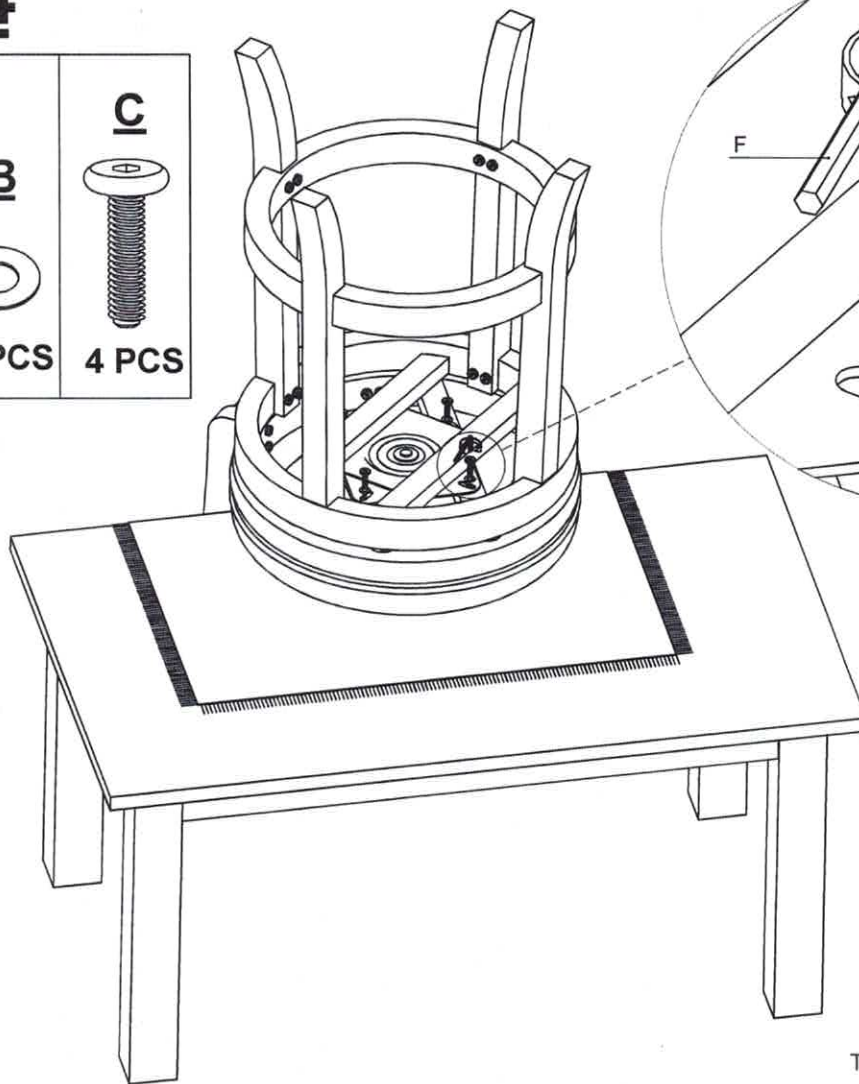
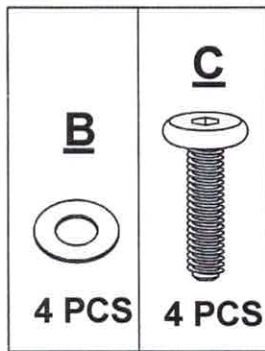
# 03



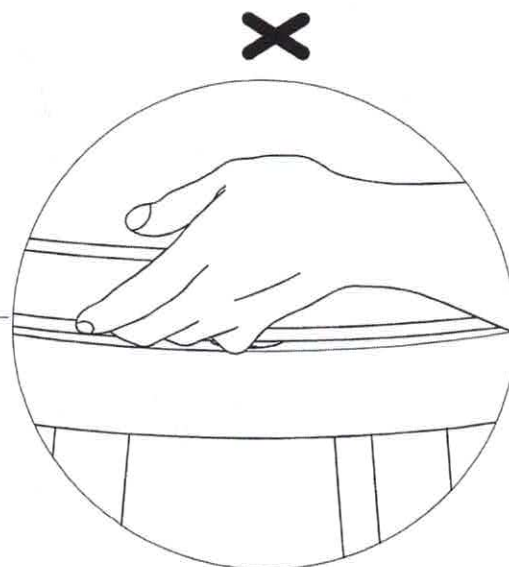
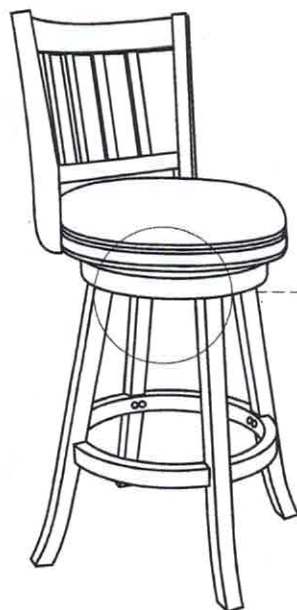
TIGHTEN BOLT COMPLETELY.



# 04



TIGHTEN BOLT COMPLETELY.



BE SURE TO CHECK ALL BOLTS ARE SECURELY  
TIGHTENED PRIOR USING THIS STOOL.