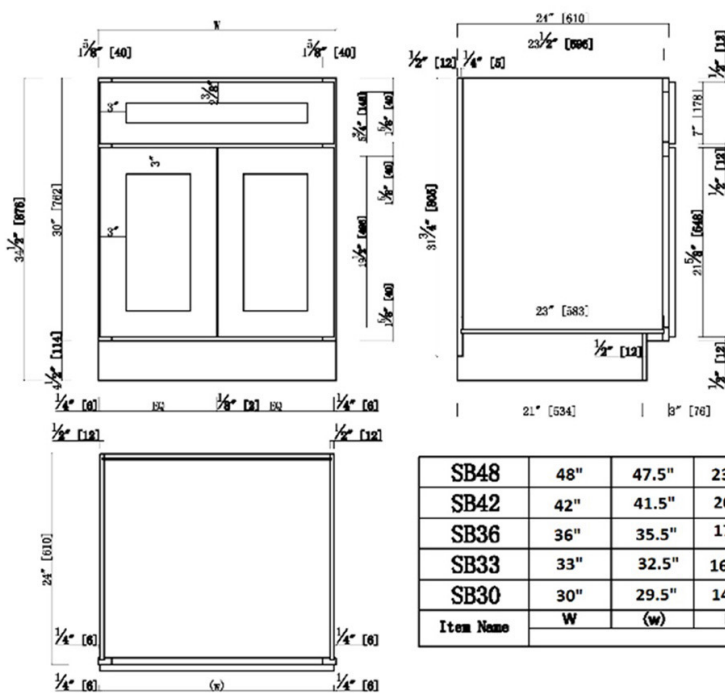


Brookings Unassembled Shaker Sink Base Kitchen Cabinet 33x34.5x24 Espresso



SB48	48"	47.5"	23.75"
SB42	42"	41.5"	20.75"
SB36	36"	35.5"	17.75"
SB33	33"	32.5"	16.25"
SB30	30"	29.5"	14.75"
Item Name	W	(w)	EQ

SPECIFICATIONS

MATERIAL CONSTRUCTION: Wood

WOOD SPECIES: Maple

ASSEMBLED DIMENSIONS: 34.5" H x 33" L x 24" D

ASSEMBLED WEIGHT: 64.37 lbs.

KITCHEN CABINET TYPE: Base

MOUNTING TYPE: Floor Mount

CONSTRUCTION TYPE: Face Frame

HINGE STYLE: Soft Close

DOOR STYLE: 2 Wood shaker doors

DRAWER DIMENSIONS 1: N/A

DRAWER DIMENSIONS 2: N/A

DRAWER DIMENSIONS 3: N/A

DWR BOX MATERIAL: N/A

DWR CONSTRUCTION: N/A

DWR GLIDE: N/A

FAKE DWR QTY: 1

FAKE DWR LOCATION: Center

WARRANTY: 1-Year limited warranty

LEGAL FOR SALE IN CALIFORNIA: Yes

CARB COMPLIANT: CARB Phase 2

TSCA TITLE IV COMPLIANT: Yes

NUMBER OF SHELVES: 0

SHELF STYLE: N/A

ADJUSTIBLE SHELVES: N/A

SHELF ADJUSTIBILITY INCREMENTS: N/A

SHELF DIMENSIONS: N/A

SHELF THICKNESS: N/A

SHELF MATERIAL: N/A

FACE FRAME MATERIAL: Solid Maple

SIDES MATERIAL: Plywood

BOTTOM MATERIAL: Plywood

BACK PANEL MATERIAL: Plywood

BACK BRACE MATERIAL: Wood

TOE KICK INSET WIDTH: 3"

TOOLS NEEDED FOR INSTALLATION: Phillips Screwdriver
Mallet Wood Glue
Wood Screw

FASTENER TYPE:



TYPE:

JOB:

ORDER CODE:

APPROVALS: