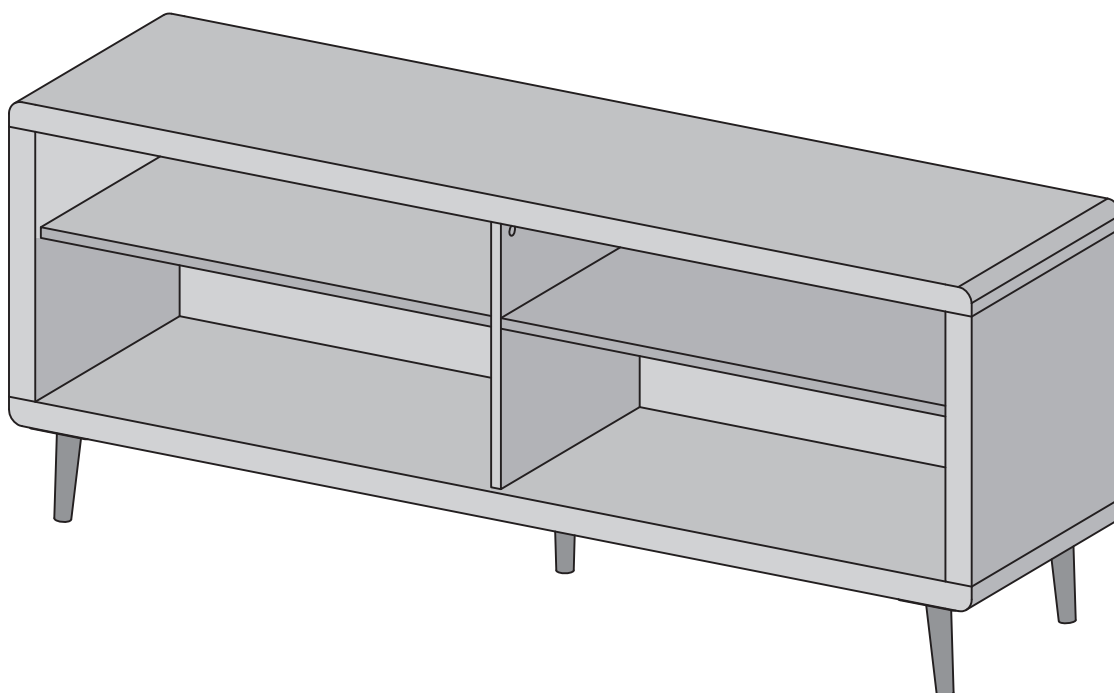




Item # : W58RDC
Assembly Instructions

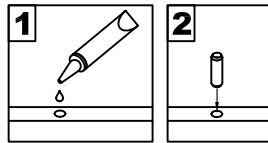


*Please visit our website for the most current instructions, assembly tips, report damage, or request parts. **www.walkeredison.com***

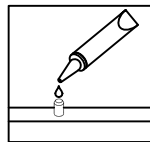
Revised 06/2017

General Assembly Guidelines

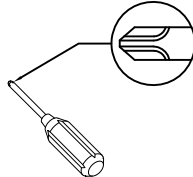
- I. Ensure that all parts and hardware are available before beginning assembly.
- II. Follow each step carefully to ensure the proper assembly of this product.
- III. Two people are recommended for ease in the assembly of this product.
- IV. The three main types of hardware used to assemble this product are : wood dowels , screws and bolts.
- V. The provided glue is to secure wood dowels in place . When first inserting dowels , locate the appropriate hole for the dowel , place a small amount of glue in the hole and insert the dowel . Wipe away excess glue immediately.



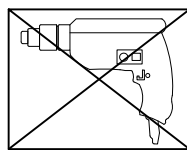
In future assembly steps when dowels are necessary to attach assembly parts together , place a small amount of glue on the end of the dowel before attaching parts together . Wipe away excess glue immediately.



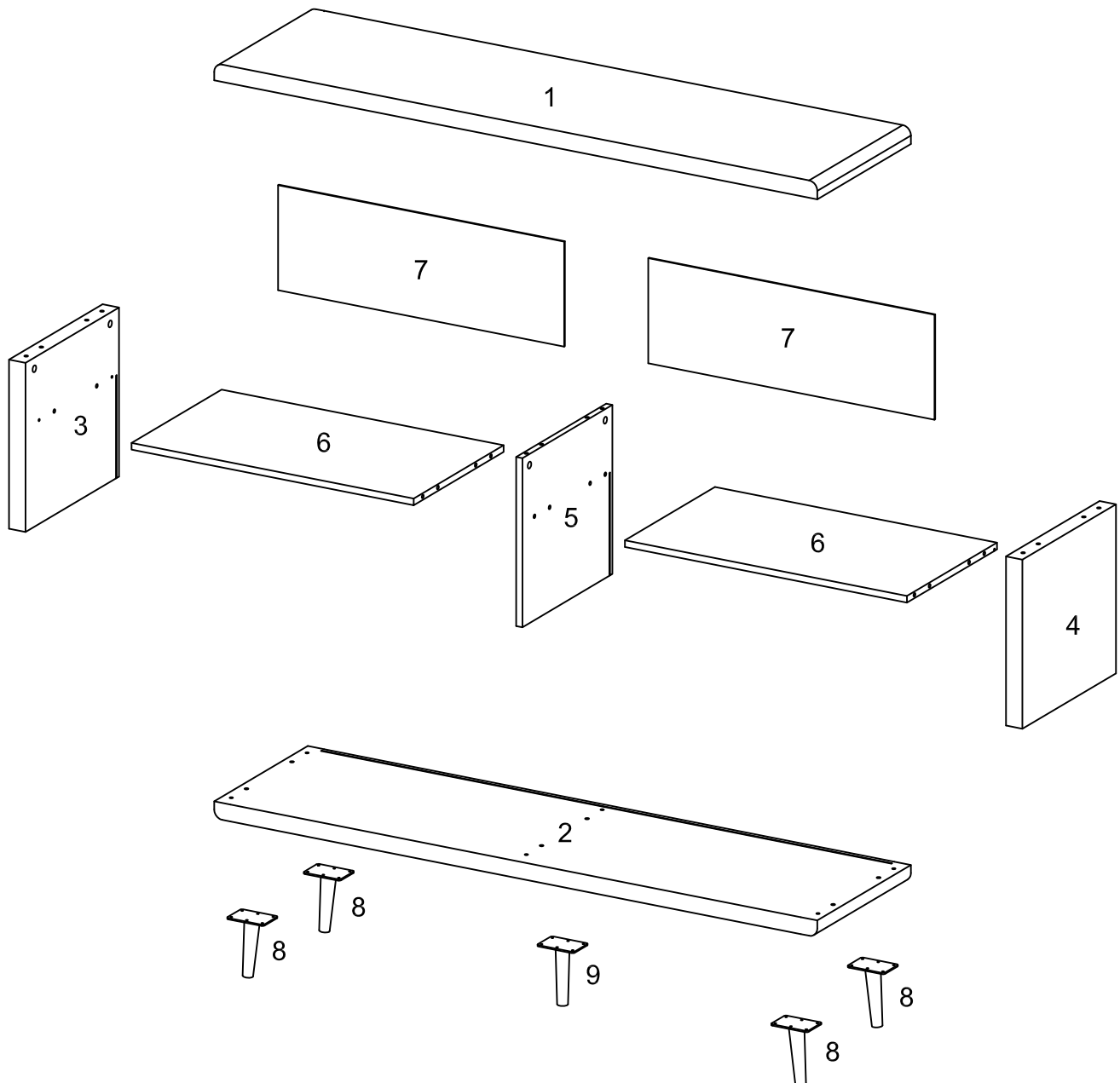
- VI. A Phillips head screwdriver is required for the assembly of this product .




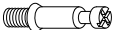

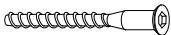
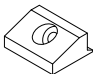

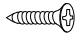


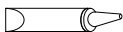
- VII. Power tools should not be used to assemble this product .

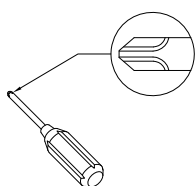


Parts List



Hardware List

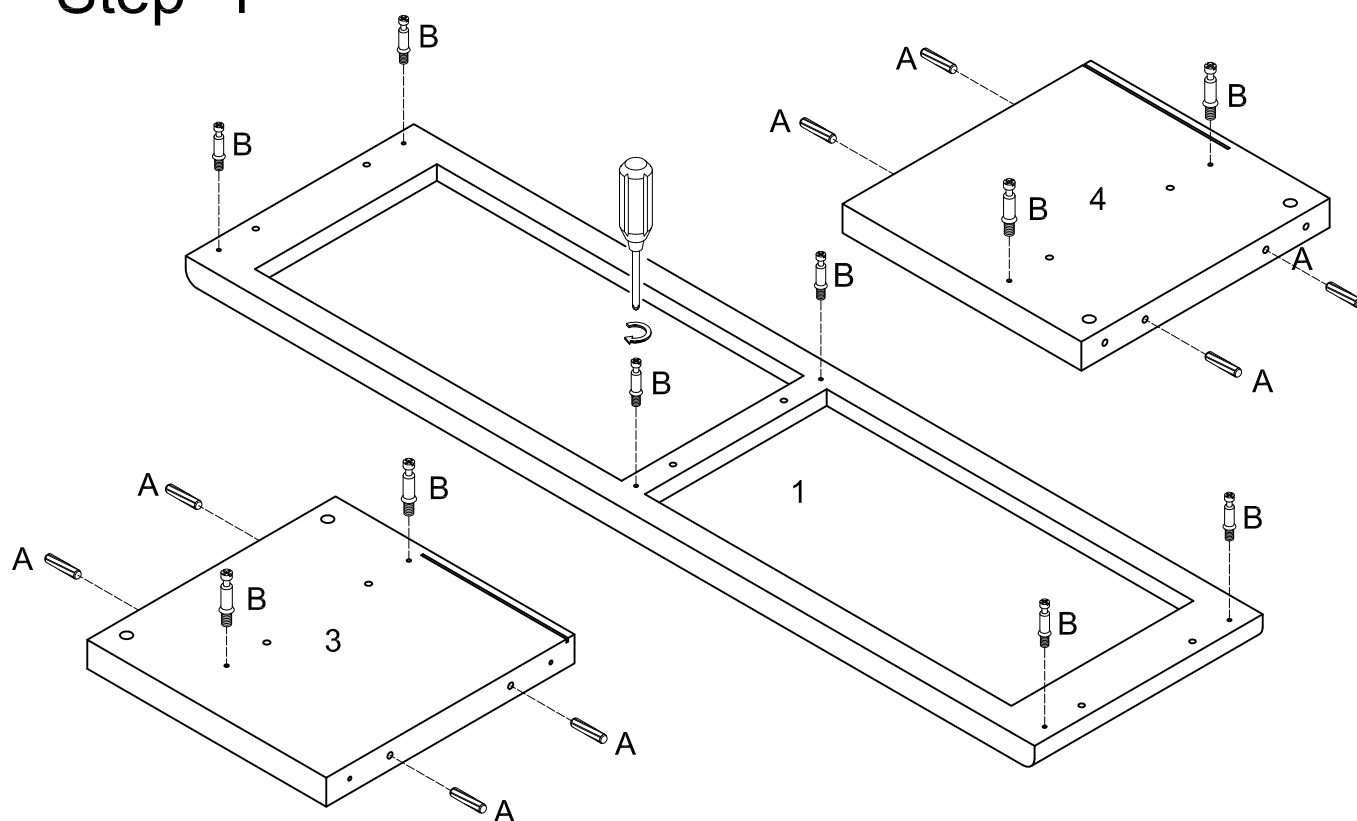
| | | | | |
|---|---|---------|---------------|--------|
| A |  | Ø8x30 | Wooden dowel | 20 pcs |
| B |  | Ø6x35 | Cam bolt | 14 pcs |
| C |  | Ø15x11 | Cam lock | 14 pcs |
| D |  | Ø6x50 | Bolt | 6 pcs |
| E |  | | Plastic wedge | 8 pcs |
| F |  | Ø3x17 | Screw | 8 pcs |
| G |  | Ø3.5x14 | Screw | 30 pcs |
| H |  | | Wrench | 1 pc |
| J |  | | Sticker | 14 pcs |
| K |  | | Glue tube | 1 pc |



Philips head screwdriver required for assembly
(not included)

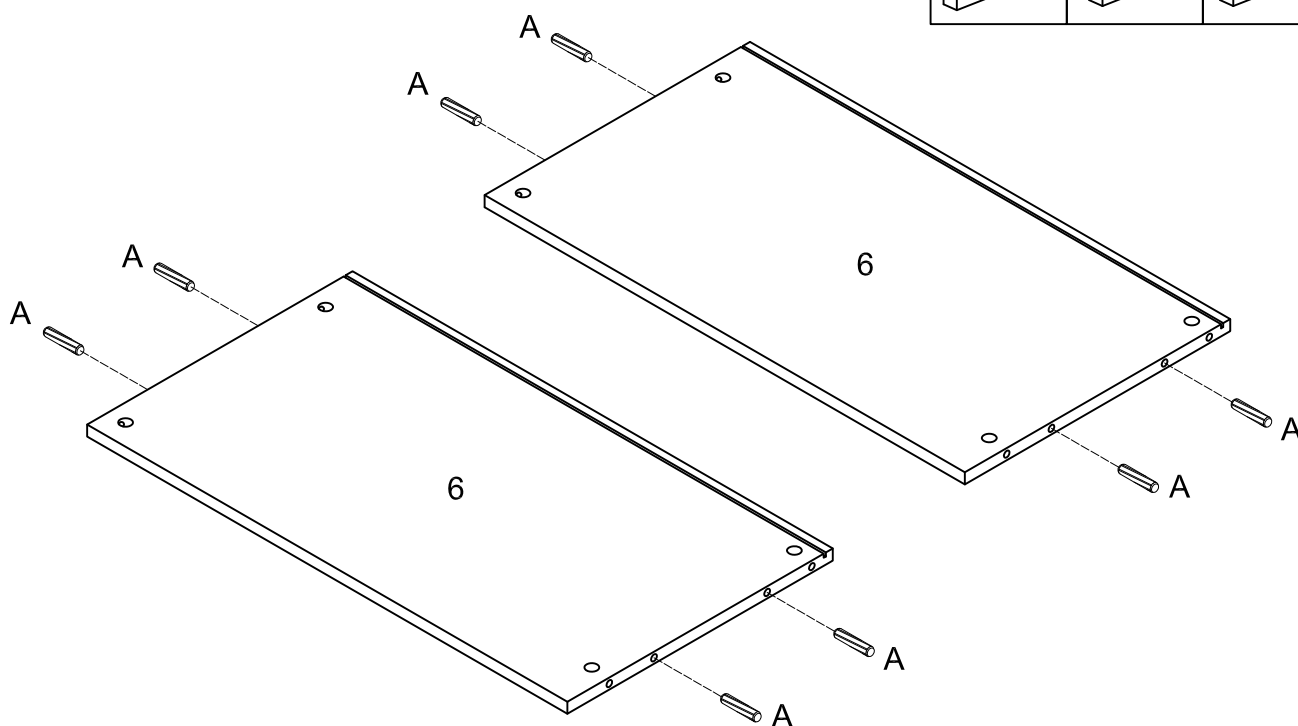
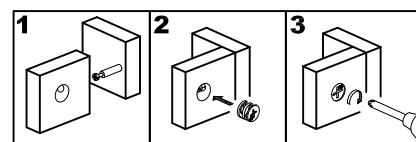
*The hardware quantities listed above are required for proper assembly.
Some extra hardware may also have been included.*

Step 1



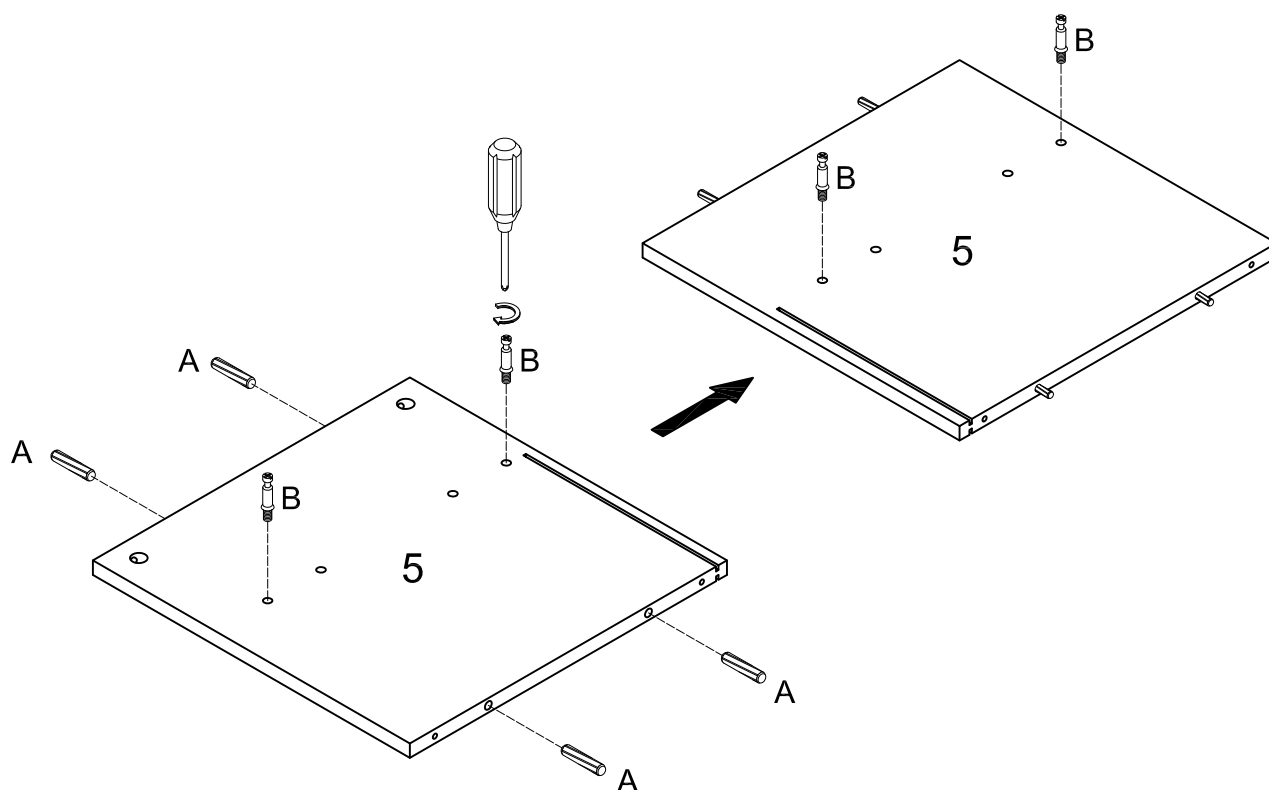
Insert wooden dowel (A) into side panel (3,4). Secure cam bolt (B) to side panel (3,4) and top panel (1).

Step 2



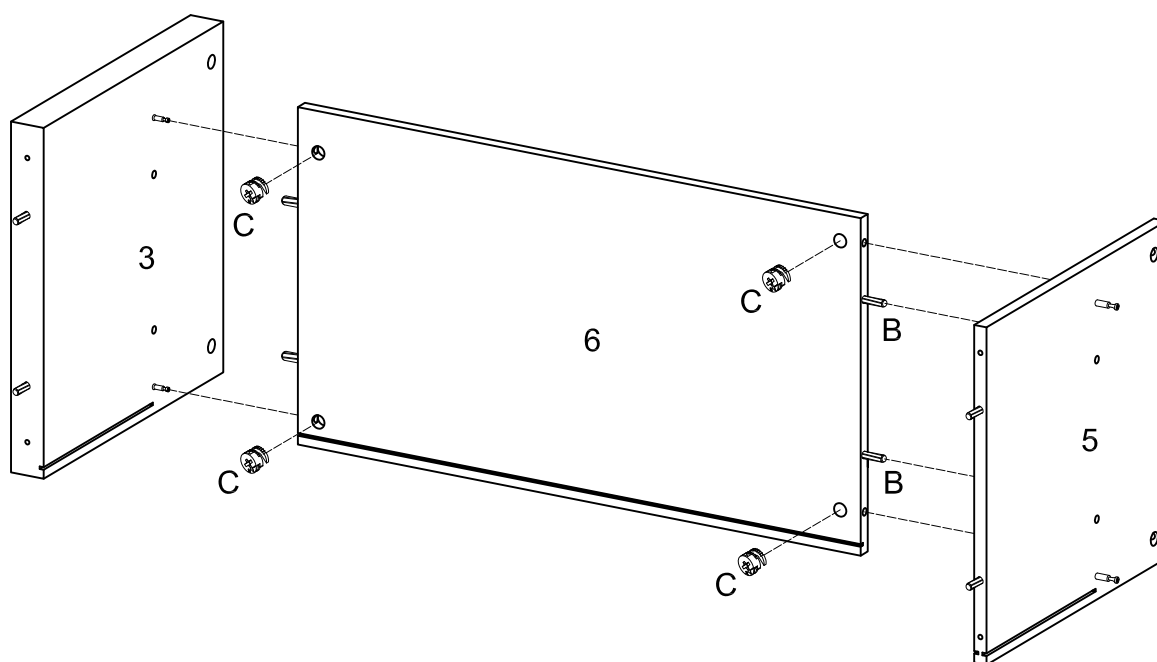
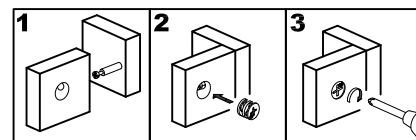
Insert wooden dowel (A) into shelf (6).

Step 3



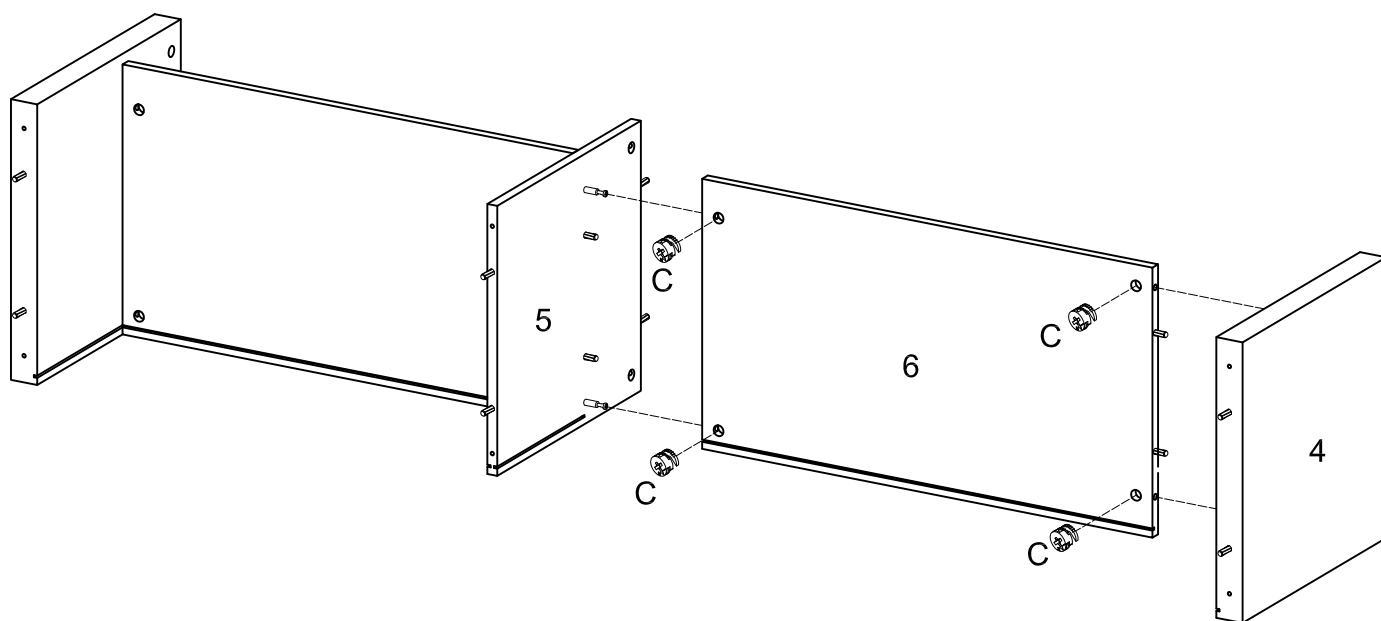
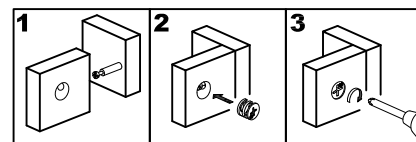
Insert wooden dowel (A) into side panel (5). Secure cam bolt (B) to side panel (5), then turn around to secure cam bolt (B) to side panel (5) as per diagram.

Step 4



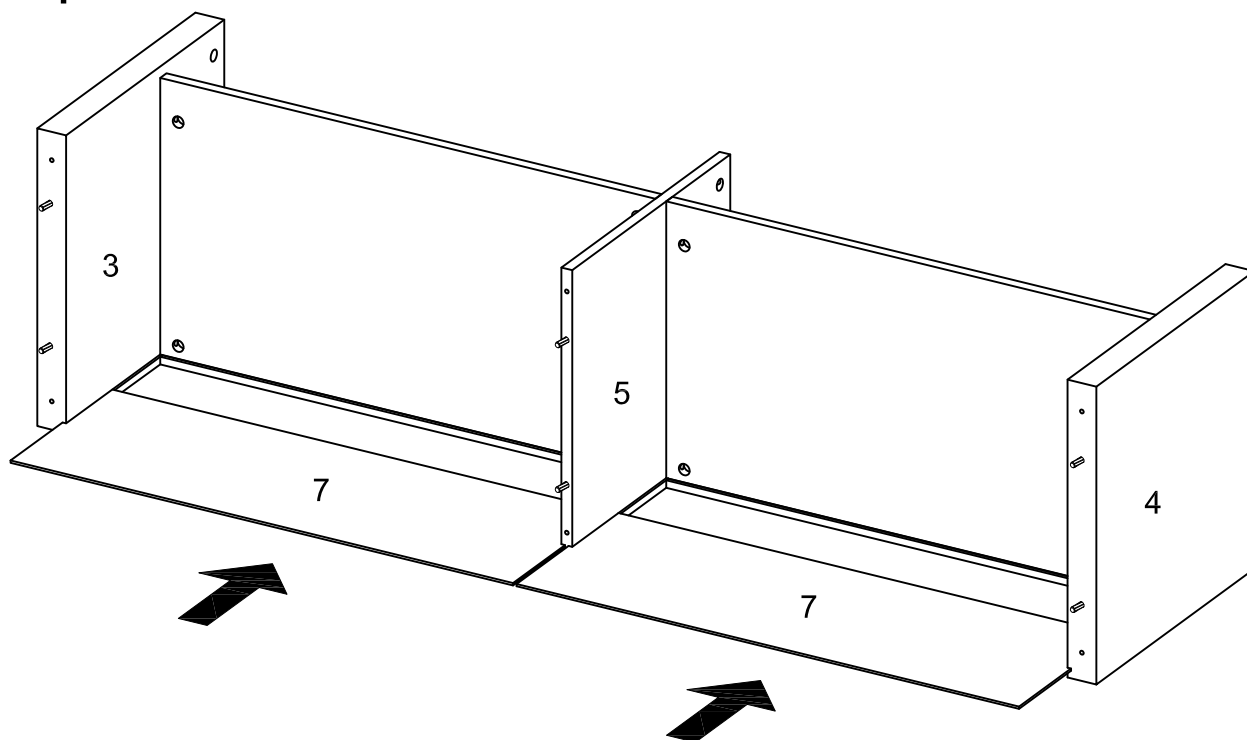
Insert side panel (3,5) into shelf (6), then insert and secure cam lock (C) to shelf (6) to lock it. The cam lock (C) in shelf (6) cannot be tighten completely to the middle panel (5) until the other side panel (4) and shelf (6) inserted.

Step 5



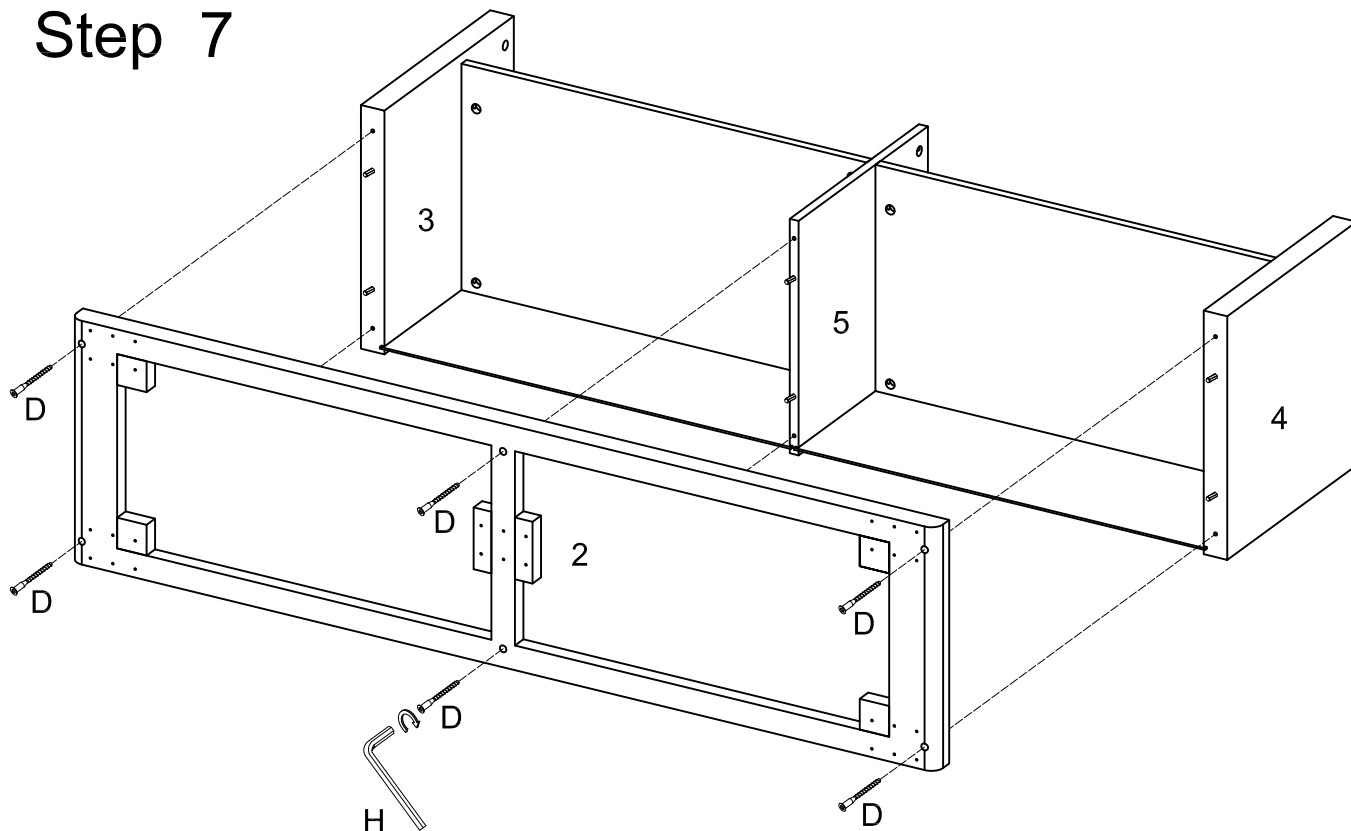
Insert side panel (4,5) into shelf (6), then insert and secure cam lock (C) to shelf (6) to lock it. Tighten completely to all cam lock (C) in shelf (6).

Step 6



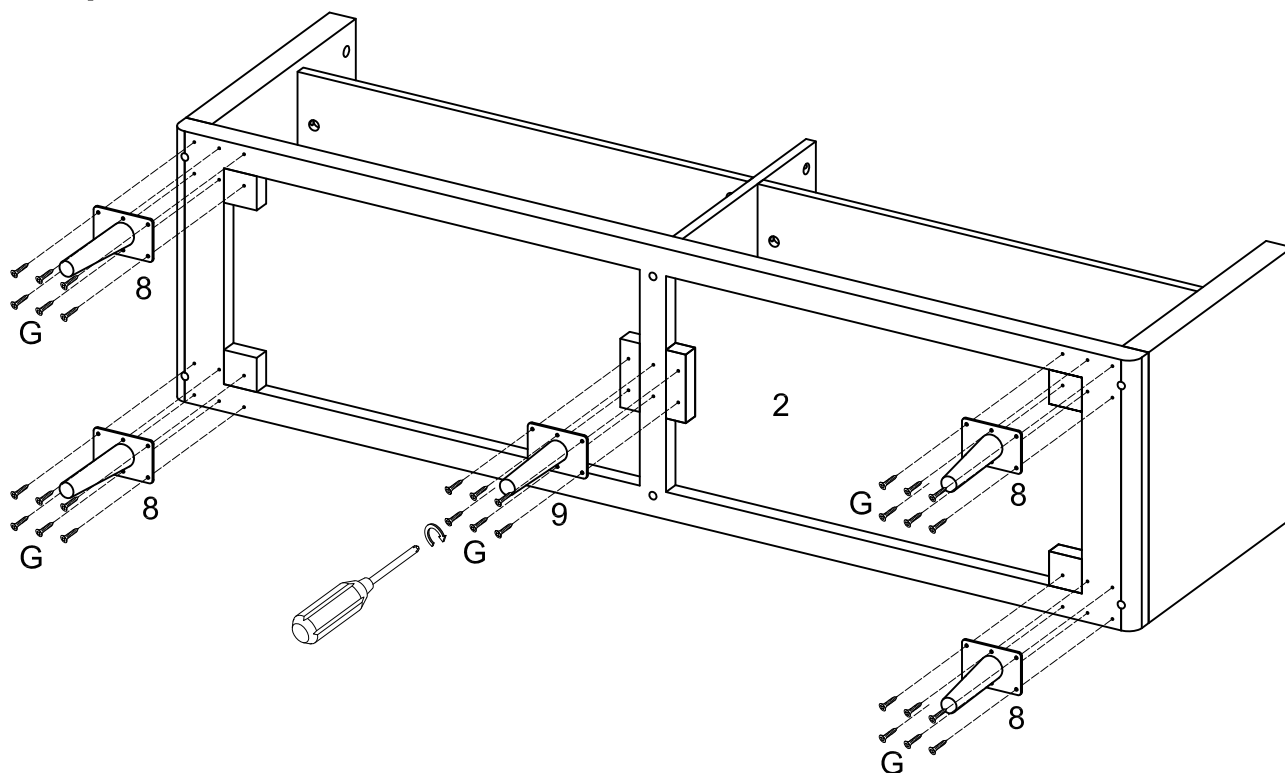
Insert back panel (7) through side panel (3,4,5) as per diagram.

Step 7



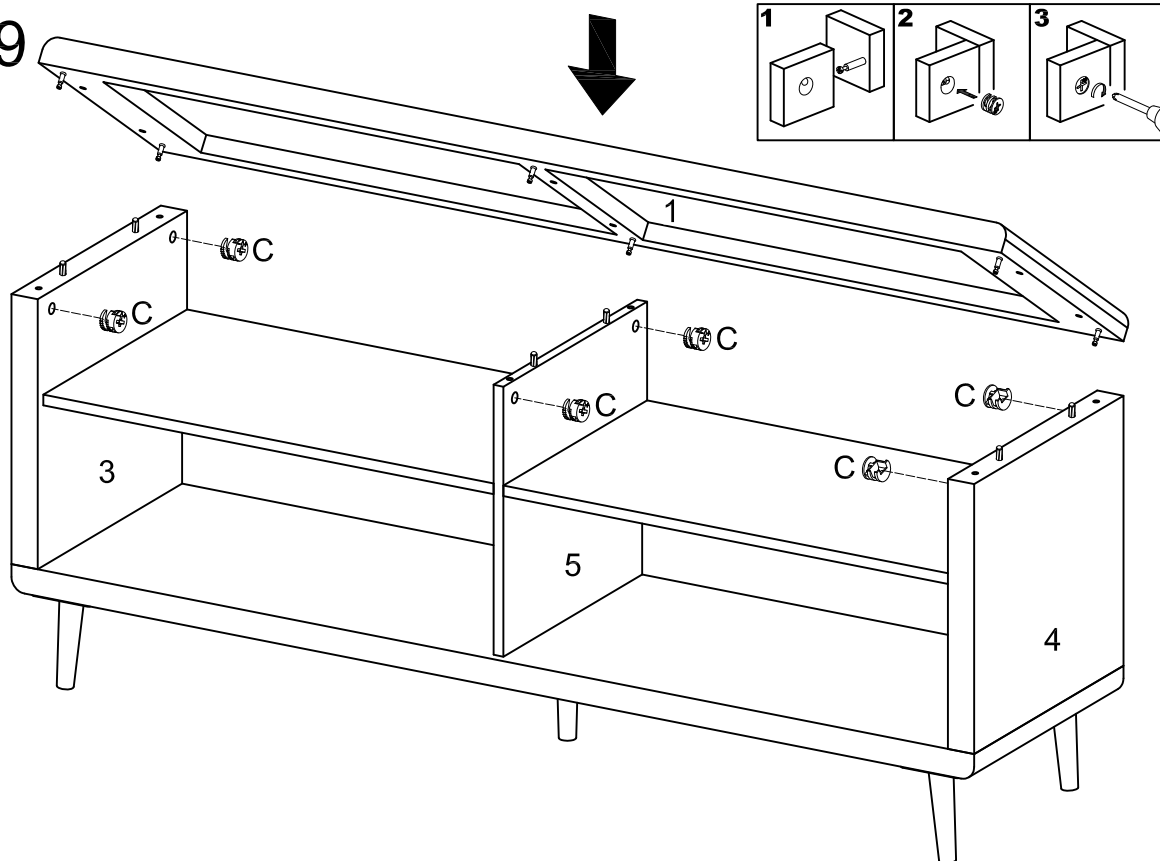
Insert bottom panel (2) to side panel (3,4,5). Use wrench (H) and bolt (D) to secure bottom panel (2) to side panel (3,4,5).

Step 8



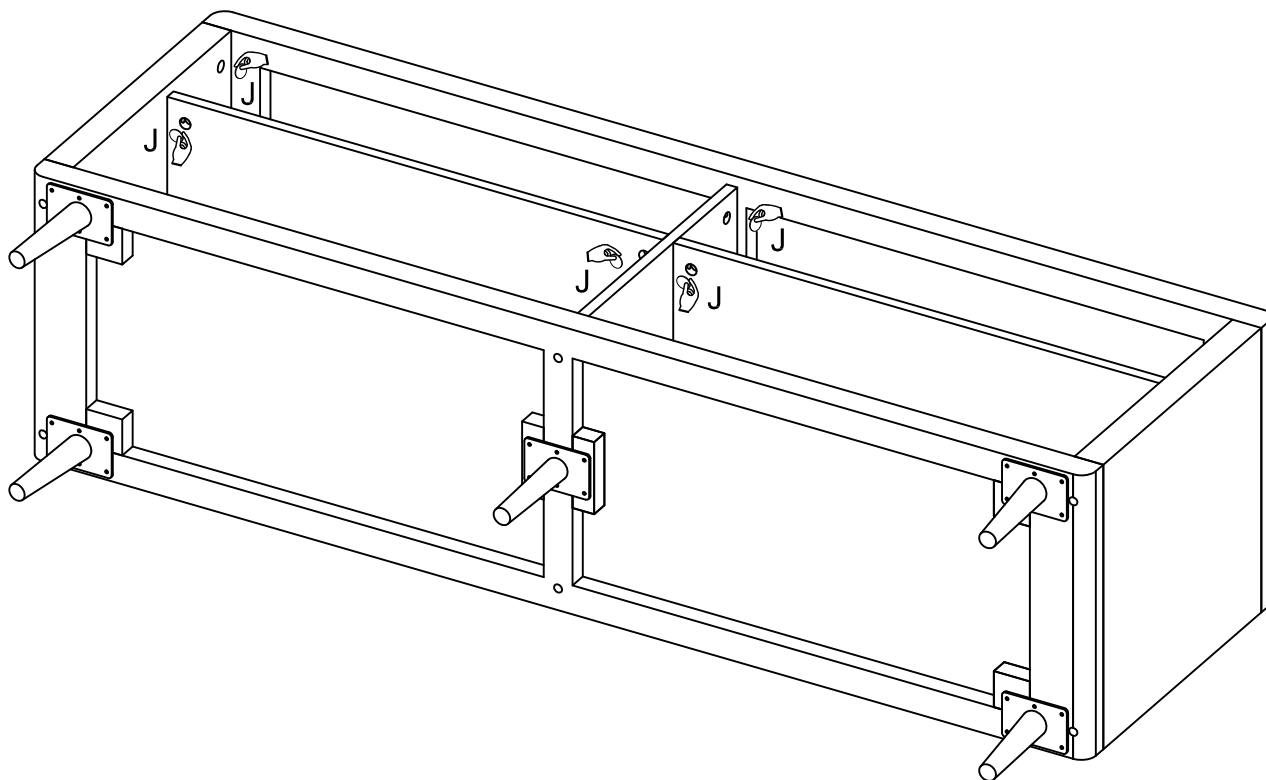
Secure leg (8,9) to bottom panel (2) with screw (G).

Step 9



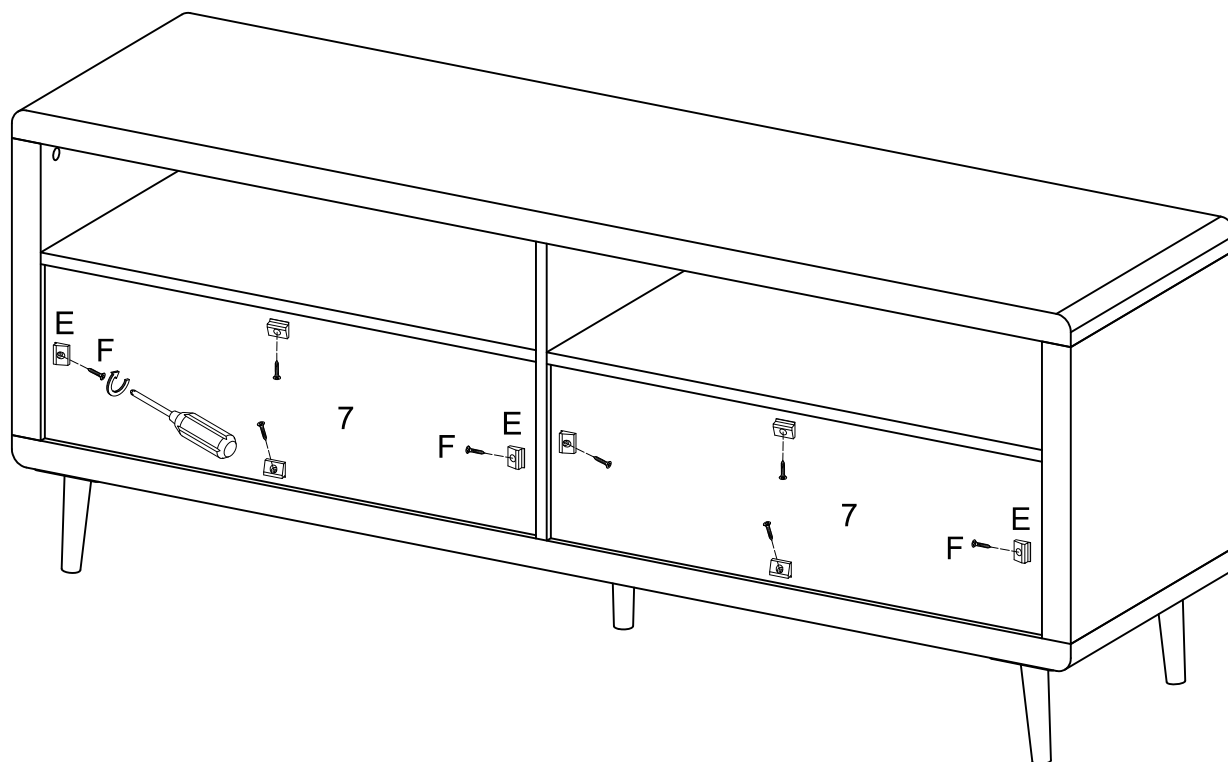
Insert top panel (1) into side panel (3,4,5), then insert and secure cam lock (C) to side panel (3,4,5) to lock it.

Step 10



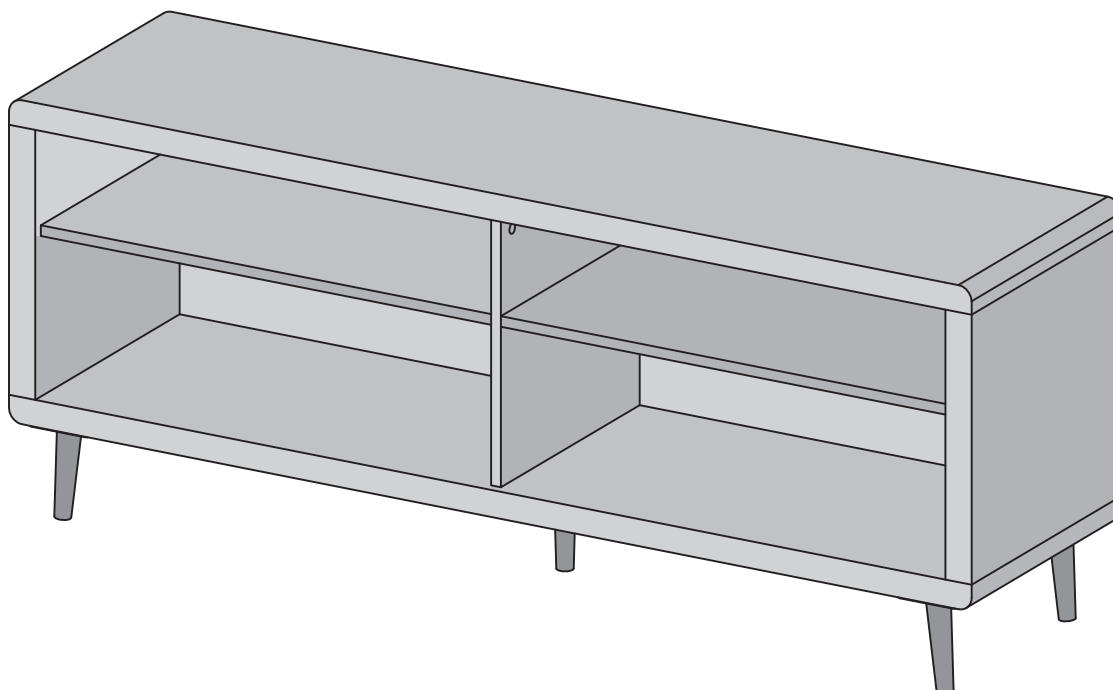
Place sticker (J) over holes as per diagram.

Step 11



Secure plastic wedge (E) to back panel (7) with screw (F).

Step 12



Final Assembly