

Shaker Printer Trolley

www.rensup.com

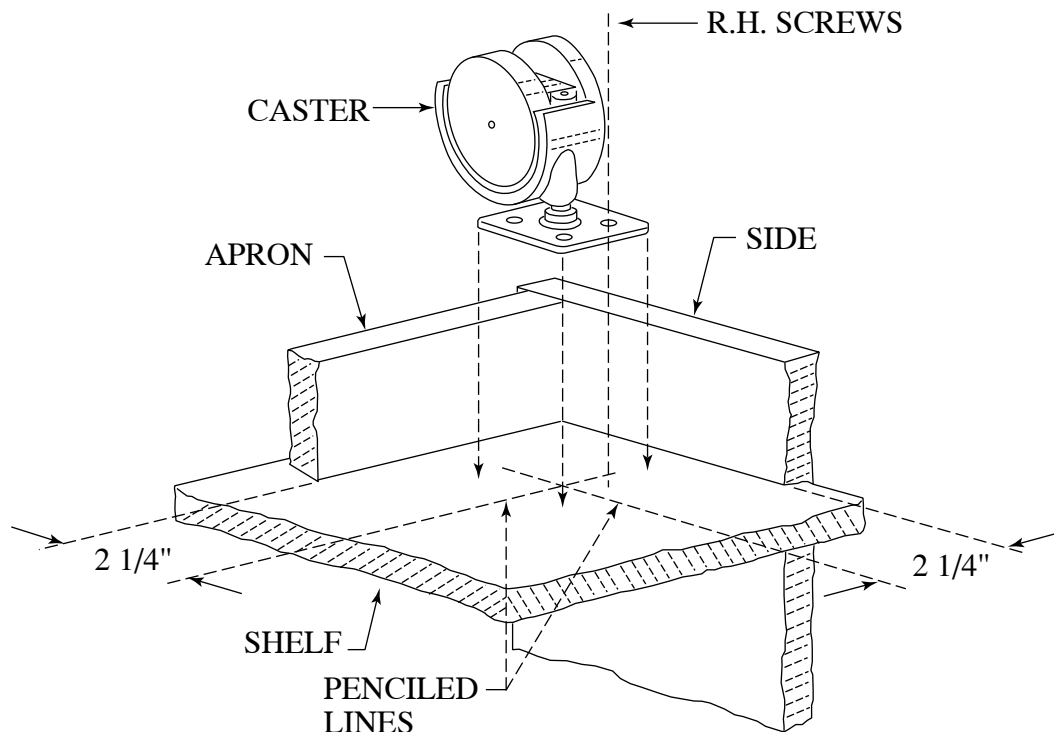
Assembly

Position the unit upside down so that the underside of the lower shelf is accessible.

Measure 2 1/4" in from the inside edges of the front and rear aprons and make light pencil lines on the shelf near each corner. Measure 2 1/4" in from the inside edges of the sides and make light pencil lines across the first. Position one caster at each corner so that the mounting plates are centered on the intersecting pencil lines. Fasten each caster in place with four 5/8" round-head screws. (See drawing).

Turn assembly up right.

We hope you are pleased with your new shaker printer trolley.
Visit www.rensup.com for more office furniture and accessories



These instructions and drawings disclose confidential and other data of proprietary nature owned by Renovator's Supply Inc. and may not be used or disclosed to others without the prior written consent of Renovator's Supply Inc.

Renovators Supply, Inc