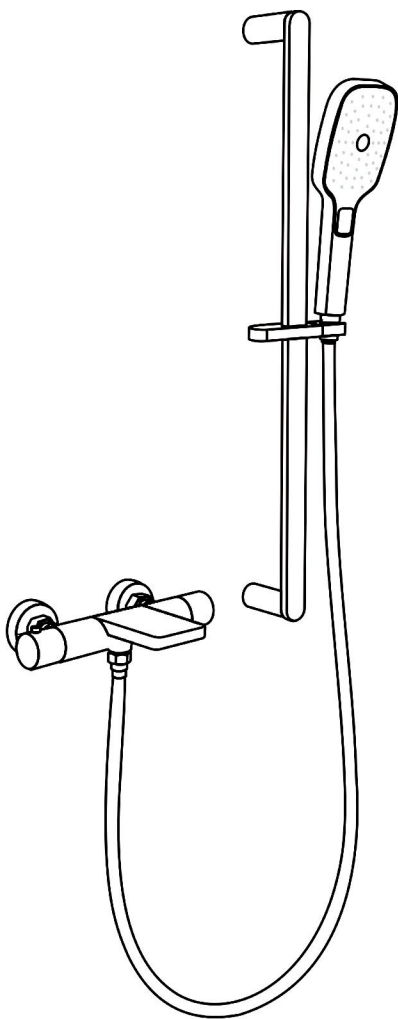


# User's Manual



INSTALLATION INSTRUCTIONS

Installation Manual



**IAPMO RESEARCH AND TESTING, INC.**  
5001 East Philadelphia Street, Ontario, California 91761-2816 • USA • 909-472-4100 • 909-472-4244 • [www.iapmo.org](http://www.iapmo.org)





**CERTIFICATE OF LISTING**

This certificate is not evidence of current listing. To verify listing status, visit the IAPMO R&T Product Listing Directory at [pld.iapmo.org](http://pld.iapmo.org)

Effective Date:	December 2019	-Rev. 2/24/2020-	Void After: December 2024
Product:	Flexible Water Connectors		File No. 5311
Issued To:	Fanak Group Inc. Mechanical & Electrical Industrial Zone, Yuhuan County, Yuhuan 317400, ZHEJIANG China		

**Identification:** Products shall be marked with manufacturer's name or trademark, a statement "For use with water in accessible locations only." The products shall also bear the cUPC® certification mark. Markings shall be by means of either a permanent mark on the product, a label on the product or a tag attached to the product.

**Characteristics:** Flexible water connectors manufactured in various sizes, lengths and metal and fittings for hot or cold water applications that consist of an inner tube, which may or may not have an outer braided cover. Connectors are to be installed for use in accessible locations only. To be installed in accordance with the manufacturer's instruction, and the latest edition of the Uniform Plumbing Code and National Plumbing Code of Canada.

Products listed on this certificate have been tested by an IAPMO R&T recognized laboratory. This recognition has been granted based upon the



This listing period is based upon the last date of the month indicated on the Effective Date and Void After Date shown above. Any change in material, manufacturing process, marking or design without having first obtained the approval of the Product Certification Committee, or any violation of the Uniform Plumbing Code or National Plumbing Code of Canada, shall void this listing. This listing is not a warranty, nor shall it be construed as a recommendation, assurance or guarantee by IAPMO Research and Testing, Inc. Any alteration of this certificate could be grounds for revocation of this listing. This document shall be reproduced in its entirety.

**IAPMO RESEARCH AND TESTING, INC.**  
5001 East Philadelphia Street, Ontario, California 91761-2816 • USA • 909-472-4100 • 909-472-4244 • [www.iapmo.org](http://www.iapmo.org)





**CERTIFICATE OF LISTING**

This certificate is not evidence of current listing. To verify listing status, visit the IAPMO R&T Product Listing Directory at [pld.iapmo.org](http://pld.iapmo.org)

Effective Date:	November 2019		Void After: November 2024
Product:	Plumbing Fixture Fittings		File No. 10633
Issued To:	Aqua Gallery Co., Ltd 13th-15th A10 Block International Dynamics Sanitary City, 528000 Foshan, China		

**Identification:** Plumbing supply fittings complying with this Standard shall be marked with the manufacturer's recognized name, trademark, or other mark or, in the case of private labeling, the name, trademark or other mark of the customer for whom the fitting was manufactured. The marking shall be accomplished by use of a permanent mark or by placing a permanent label on the product. Markings on plumbing supply fittings shall be visible after installation.




Single-handle, single-control, and automatic compensating mixing bath and shower valves shall have identifiable temperature control settings in which the settings are indicated by words ("cold", "warm", "hot", etc.), by numbers, or graphically.


Packages shall be marked with the manufacturer's name, trademark, or other mark as well as the model number or, in the case of private



This listing period is based upon the last date of the month indicated on the Effective Date and Void After Date shown above. Any change in material, manufacturing process, marking or design without having first obtained the approval of the Product Certification Committee, or any violation of the Uniform Plumbing Code or National Plumbing Code of Canada, shall void this listing. This listing is not a warranty, nor shall it be construed as a recommendation, assurance or guarantee by IAPMO Research and Testing, Inc. Any alteration of this certificate could be grounds for revocation of this listing. This document shall be reproduced in its entirety.

**IAPMO RESEARCH AND TESTING, INC.**  
5001 East Philadelphia Street, Ontario, California 91761-2816 • USA • 909-472-4100 • 909-472-4244 • [www.iapmo.org](http://www.iapmo.org)





**CERTIFICATE OF LISTING**

This certificate is not evidence of current listing. To verify listing status, visit the IAPMO R&T Product Listing Directory at [pld.iapmo.org](http://pld.iapmo.org)




Effective Date:	March 2019		Void After: March 2024
Product:	Plumbing Fixture Fittings - Components		File No. MC-9703
Issued To:	Ningbo Nanhai Cartridge Technology Co., Ltd. Lincheng Zone, Chunhui Fengpu, JIANGSU 215538 China		

**Identification:** Each fitting component shall bear permanent legible markings to identify the manufacturer. This marking shall be the trade name, trademark, or other mark known to identify the manufacturer. The product shall also bear all other markings required by the standards. The marking shall be applied so as to be visible after installation. The product or packaging shall also bear the cUPC® certification mark along with the term "COMPONENT" above.

**Characteristics:** Plumbing fixture fitting components to be installed in accordance with the manufacturer's instructions and the requirements of the latest edition of the Uniform Plumbing Code.

Products listed on this certificate have been tested by an IAPMO R&T recognized laboratory. This recognition has been granted based upon the Laboratory's compliance to the applicable requirements of ISO/IEC 17025.

Products are in compliance with the following code(s):  
Uniform Plumbing Code (UPC®)



This listing period is based upon the last date of the month indicated on the Effective Date and Void After Date shown above. Any change in material, manufacturing process, marking or design without having first obtained the approval of the Product Certification Committee, or any violation of the Uniform Plumbing Code or National Plumbing Code of Canada, shall void this listing. This listing is not a warranty, nor shall it be construed as a recommendation, assurance or guarantee by IAPMO Research and Testing, Inc. Any alteration of this certificate could be grounds for revocation of this listing. This document shall be reproduced in its entirety.

# BEFORE INSTALLATION

## 1、Instructions for use

Constant temperature faucet is designed to provide comfortable life, water and energy saving, and to provide accurate and ideal water temperature . All thermostatic faucets have adjusted the water pressure at both ends to 0.3pa before delivery. The performance of this device is conducive to the optimal control of any form of scalding and heating.

## 2、Technical data

- 1.Please make sure that the embedded water pipe is left hot water and right cold water (do not bury it upside down, otherwise the product will not work normally)
- 2.The normal use range of the product is 4°C~ 35°C for cold water and 45°C ~ 90°C for hot water. It is recommended to set the temperature of water heater at 45°C~ 55°C for tooling or channel water use, and 50°C~ 70°C for water heater.
- 3.The normal water pressure range of the product is 0. 1MPa ~ 0.5MPa (1bar-5bar). If the pressure is greater than 0.5MPa, pressure reducing valve should be installed.

Before the installation of the product, please open the cold and hot water main gate to fush the cold and hot water pipes for at least 1 minute, and be sure to clean the impurities, scale, sediment and other impurities in the original pipeline.

## 3、precautions

- 3.1 Before installing the faucet, the sundries and sludge in the water pipe must be removed first, so as not to block the faucet and affect the normal water outlet. At least 10L of water should be flushed.
- 3.2 The faucet and the hot and cold water supply pipe must be connected correctly, that is, facing the front of the faucet, the left side is connected with hot water and the right side is connected with cold water. Otherwise, the temperature control valve core will be seriously damaged, which is not covered by the warranty.
- 3.3 After installation, please check the sealing condition of each joint, and there should be no leakage.
- 3.4 When installing, use a level meter to ensure that the tap is placed horizontally, vertically and parallel on the wall.
- 3.5 Warm tips: if the tap is not used for a long time in cold weather areas or in winter when the indoor temperature is lower than 4°C, the main gate of water meter should be closed to drain off the residual water, so as to avoid the expansion and crack of the tap caused by the freezing of residual water in the pipe and volume expansion

## 4、Installation mode

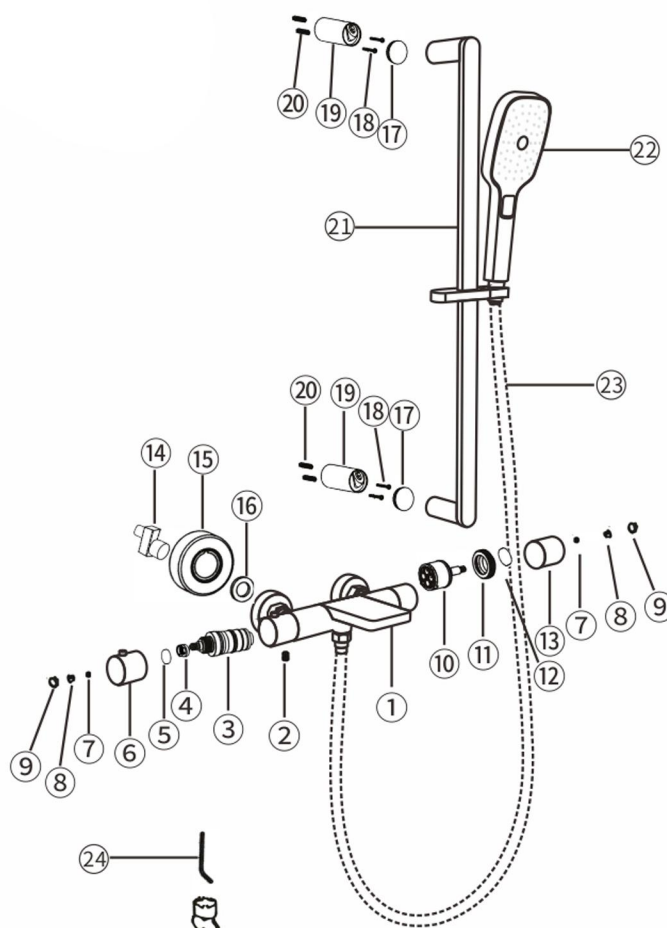
Please read the installation instructions carefully before installation.Installation must be carried out by professional installation personnel.

## 5、Cleaning instructions

Ensure constant temperature and smooth descaling. Wake up at full temperature range every 3 months. The operation is as follows

1. Remove the hand-held shower and adjust the switch to the hand-held end for water outflow.
- 2.Manually screw it to the full cold water end, drain for 10 seconds, and then screw it to the full hot end, drain for 10 seconds, and perform reciprocating operation for 3 times.(it is recommended to shorten the maintenance period in areas with serious scale)
3. Switch the faucet frequently (interval is about 5 seconds), and keep the hose drain until the water is clean
4. Replace the hand-held shower, Angelica in place, complete.

Serial number	name	number
1	Subject	1
2	Screw	1
3	Spool	1
4	Positioning sleeve	1
5	Die reducing ring	1
6	Handle	1
7	Shim	2
8	Screw	2
9	Decorative button	2
10	Water distribution valve core	1
11	Gland	1
12	Die reducing ring	1
13	Water distribution handle	1
14	Crooked feet	2
15	Decorative cover	2
16	Flat gasket	2
17	Decorative cover	2
18	Self tapping screw	2
19	Shower Seat	2
20	Expanded colloidal particles	2
21	Lifting rod	1
22	Hand held shower	1
23	Hose	1
24	parts	1



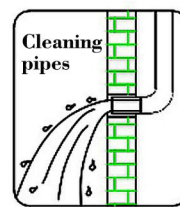


# INSTALLATION STEPS

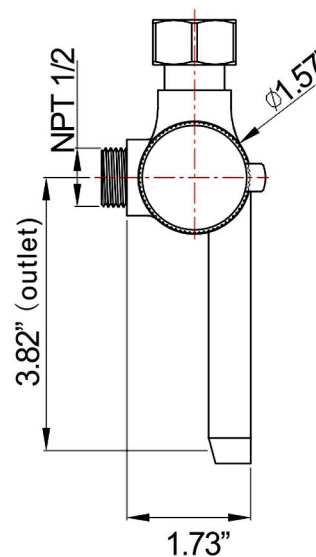
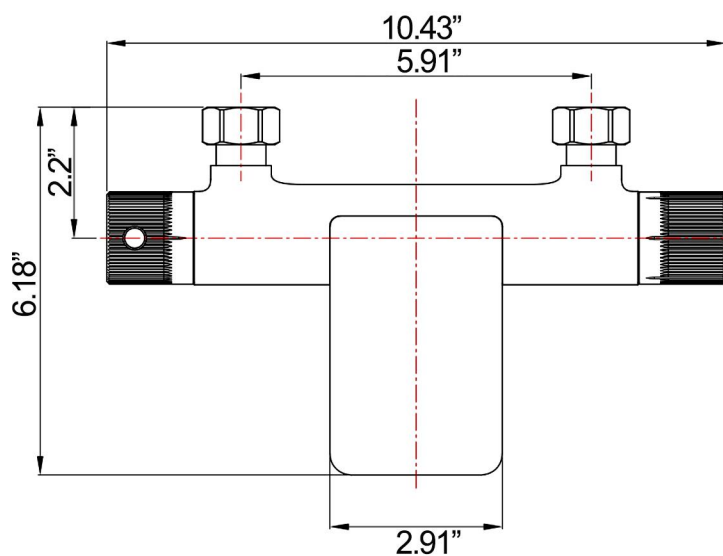
This product has been inspected and debugged by the factory to the best condition. Please do not disassemble and assemble it yourself.



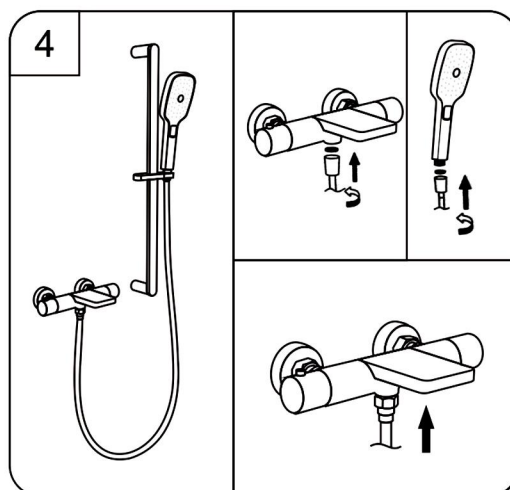
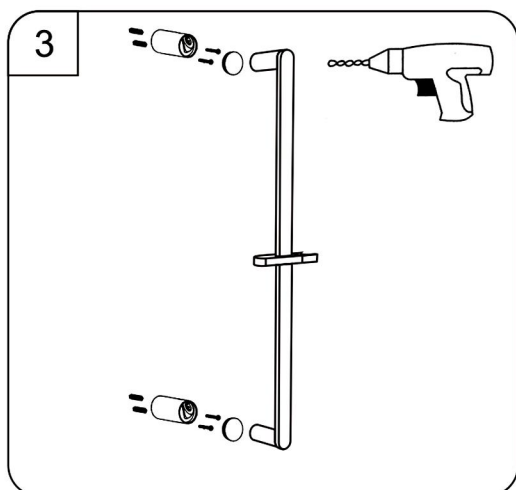
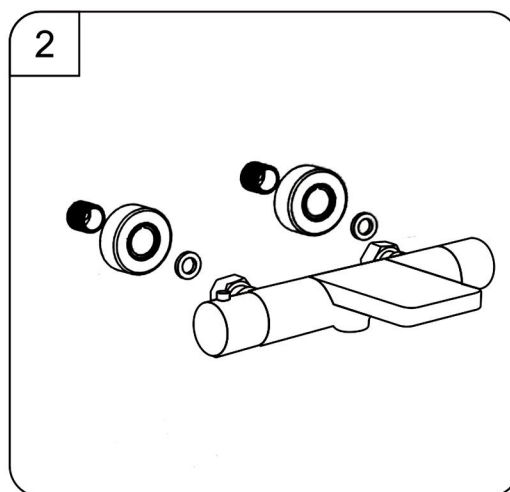
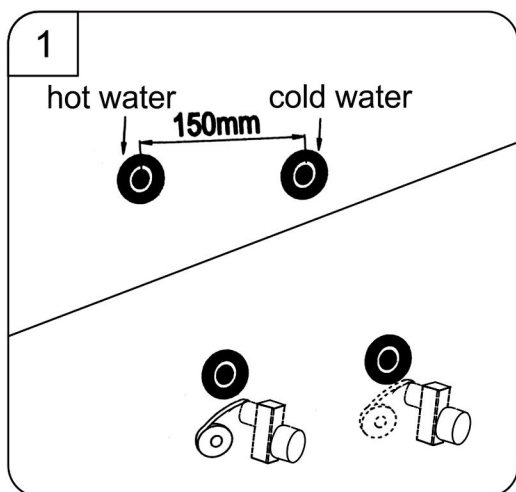
Before installing the faucet, please be sure to remove sundries and sludge from the water pipe to prevent sundries from blocking the faucet.



## Dimensional drawing



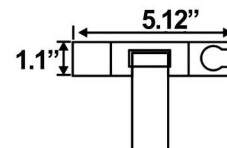
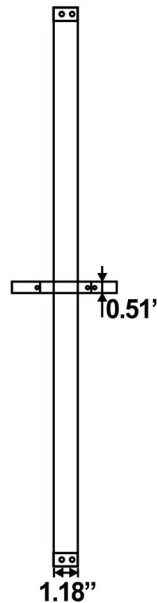
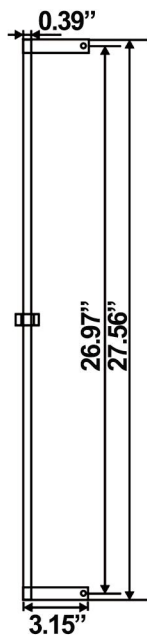
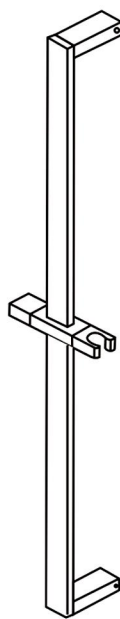
## Installation procedure



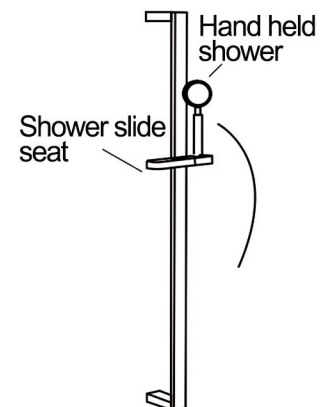
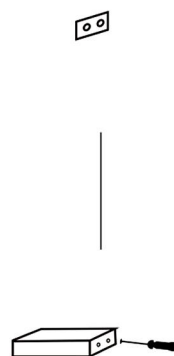
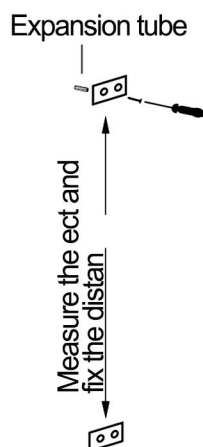
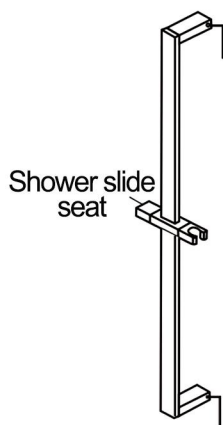
# INSTALLATION STEPS

## Dimensional drawing

Unit:inch



## Installation procedure



1.First, confirm the position on the wall and mark the hole,then use the hexagonal tool to screw off the nuts at bothends of the lifting rod, and take out the two fixed bases.

2. After drilling with an electric drill, punch the expansion glue into the hole, and then fix the base on the wall with screws.

3.If the old lifting rod is replaced, the old one is removed first, and then the new lifting rod is adjusted according to the hole distance of the old rod to adjust the distance of the mounting seat, and then it can be directly fixed on the wall.

4.Put the lifting rod on the base and tighten it with hexagon screw to complete the installation.

## CLEANING CARE

In order to keep the appearance of faucet clean,bright and good performance, please take care of the faucet as follows;

- 1.Rinse with water only and dry with soff cotton cloth;
- 2.Use mild liquid and colorless glass cleaner to remove surface dirt and scale film, or use polish without abrasive effect;
- 3.Do not use abrasive detergent, polish, emery cloth, paper towel or scraper, etc.;
- 4.Do not use acid cleaner,or cleaner and soap with insoluble gran etc.;
- 5.In the process of use, mud my accumulate in the bubbler and make the water flow show, The bubbler can be unscrewed, rinsed with water, and then installed back in place.





