



## MAINTENANCE AND CARE INSTRUCTIONS

Olympia products are designed and engineered under strict quality standards. Regular and proper care of our products will ensure years of trouble free service. To clean, simply wipe with a damp, soft cloth. Do not use abrasive or harsh cleaners as they may result in finish damage. Regularly remove the aerator and clean any debris inside it.

## TROUBLE SHOOTING

A. If water leaks from the spout outlet:	1. Shut off both hot and cold water supplies.
	2. Removal handles (A1,A2), bonnet nut (B) and cartridges (D).
	3. Check and replace springs and seats (E) if there are damaged.
	4. Reassemble handles (A1,A2), bonnet nut (B) and cartridges (D). Note:- Ensure cartridges stops face toward spout (J1, J2).
	5. If seepage still occurs, replace cartridges (D).
B. If faucet has low flow:	1. Remove Aerator (2), clean all internal debris and tighten Aerator (2) back.
	2. Repeat Trouble Shooting "A" and clean any debris trapped in the seats and springs (E).
C. If handles do not stop turning:	1. Shut off both hot and cold water supplies.
	2. Remove handles (A1,A2) and bonnet nuts (B).
	3. Check stops on cartridges (D) or inside handles (A1,A2) for damages.
	4. Replace necessary parts
D. If water leaks from spout bonnet nut:	1. Shut off both hot and cold water supplies.
	2. Loosen spout bonnet nut and gently pull off spout (J).
	3. Replace O-Rings, and carefully reassemble spout (J) and spout bonnet nut (3). NOTE: Be careful not to damage O-Rings when gently securing spout bonnet.

## OLYMPIA FAUCETS, INC. LIMITED LIFETIME WARRANTY \*

Olympia Faucets, Inc. warrants its products to the original consumer purchaser to be free from defects in material and workmanship as long as the consumer purchaser owns it. Dated proof of purchase must accompany all warranty claims. PVD finishes carry a lifetime warranty in residential service.

Olympia Faucets, Inc. will replace, free of charge, to the original consumer purchaser, any and all parts that prove defective under normal installation, use, and service. Damage as a result of misuse, abuse, accident, or improper installation, will consequentially void this warranty. Replacement parts can be obtained from your local dealer or directly from Olympia Faucets. Olympia Faucets, Inc. recommends using a certified plumber for all faucet installation and repair.

This warranty is limited to replacement of defective parts only. Incidental and consequential damages, labor charges, repair, or replacement costs are expressly excluded. Some states do not allow the exclusion or limitation of incidental or consequential damages, so the above limitation may not apply to you. This warranty gives you specific legal rights, as you may have other rights of which vary from state to state.

Installation or maintenance and cleaning must be in compliance with instructions furnished with every Olympia product. If you find a problem with your product, please immediately contact your nearest Olympia Faucets, Inc. dealer or sales representative.

\* 2 year limited warranty on commercial and multi-family projects.



## INSTALLATION AND MAINTENANCE INSTRUCTIONS FOR OLYMPIA TWO HANDLE BAR FAUCETS

THIS PRODUCT MEETS THE FOLLOWING STANDARDS: ASME A112.18.1 ~ ANSI A117.1 ~ ANSI / NSF 61, SECTION 9 ~ UPC / IAPMO LISTED / ADA COMPLIANT ~ COMPLIES WITH CALIFORNIA LEAD PLUMBING LAW

## PRODUCT NUMBERS

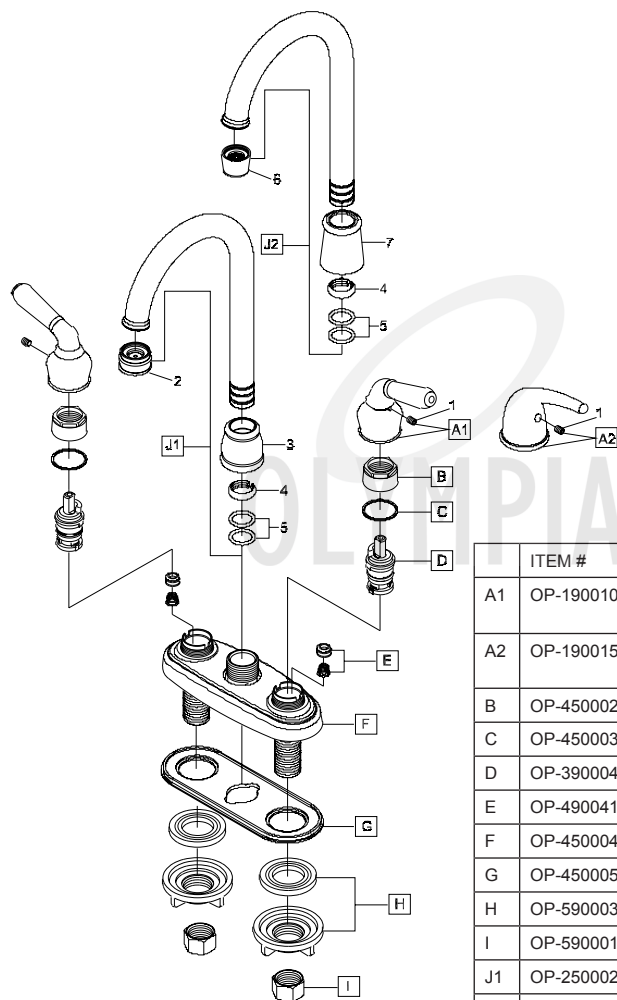
**#B-8150** Lever Handle

**#B-8160** Lever Handle





Thank you for purchasing this quality product. Olympia products are rigorously tested to provide long service under normal conditions. Prior to installation, familiarize yourself with this parts diagram. Make sure that you have all of the illustrated parts for your Olympia product before installation.



For more care information or trouble shooting inquiries about your Olympia product, please call:  
**OLYMPIA FAUCETS, INC.** (888) 772-7701  
Central Standard Time: 8:00am ~ 7:00pm  
[www.olympiafaucets.com](http://www.olympiafaucets.com)

ITEM #	DESCRIPTION
A1	OP-190010C,H Metal Lever Handle Cold,Hot (For B-8160)
A2	OP-190015C,H Metal Lever Handle Cold,Hot (For B-8150)
B	OP-450002 Bonnet Nut
C	OP-450003 Gasket
D	OP-390004 Cartridge-Brass Post
E	OP-490041 Springs & Seats
F	OP-450004 Deck Plate
G	OP-450005 Base Gasket
H	OP-590003 Mounting Locknut & Washer
I	OP-590001 Supply Nut
J1	OP-250002 Spout (For B-8160)
J2	OP-250004 Spout (For B-8150)
1	OP-490029 Allen Screw
2	OP-490057 1.5 GPM Aerator (For B-8160)
3	OP-490028 Spout Bonnet Nut (For B-8160)
4	OP-490038 Spout Snap Ring
5	OP-490039 Spout O-ring
6	OP-490035 1.5 GPM Aerator (For B-8150)
7	OP-450010 Spout Bonnet Nut (For B-8150)

## INSTALLATION INSTRUCTIONS

### Tools you will need:

- Plumbers Putty
- Teflon Tape
- Screwdriver
- Flexible Supply Lines
- Pipe Wrench
- Adjustable Wrench
- Basin Wrench
- Soft Cloth

### FAUCET INSTALLATION:

1. Carefully shut off both hot and cold water supplies from under the sink. Plug the sink drain with a soft cloth to prevent intrusion of debris or the loss of any faucet parts. If this installation is for a replacement, carefully remove the existing faucet and clean the entire surface of the sink mounting holes.
2. Apply adequate plumbers putty along the boundary of the bottom of the base gasket (G).
3. Gently align the faucet with the sink mounting holes and place the faucet on the sink. Use caution to lead both waterways through the sink mounting holes.
4. Place mounting washer and mounting locknuts (H) along the waterways. Carefully hand tighten the mounting locknuts. Do not overtighten.
5. Connect spout (J1 or J2) to faucet by carefully tightening spout bonnet nut (3 or 7) to faucet body. Ensure spout (J1 or J2) is straight and O-rings (5) are not damaged.
6. Connect both hot (LEFT INLET) and cold (RIGHT INLET) waterways to water supply lines. NOTE: If additional adapters or supply lines are required, they may be purchased from the same location where this faucet was purchased. Use with teflon tape when attaching supply lines to waterways.

### FINAL PRODUCT INSTALLATION:

1. Turn on the hot and cold water supplies. Check all around for any minor joint leaks. NOTE: Inspect for any leaks around the connections to the supply lines.
2. Remove aerator (2 or 6) from end of spout. Turn on both side of handles to flush water lines by allowing water to run through for one minute. Replace aerator (2 or 6).

**CAUTION: MAKE SURE TO TIGHTEN THE AERATOR SECURELY AFTER FLUSHING THE WATER LINES.**