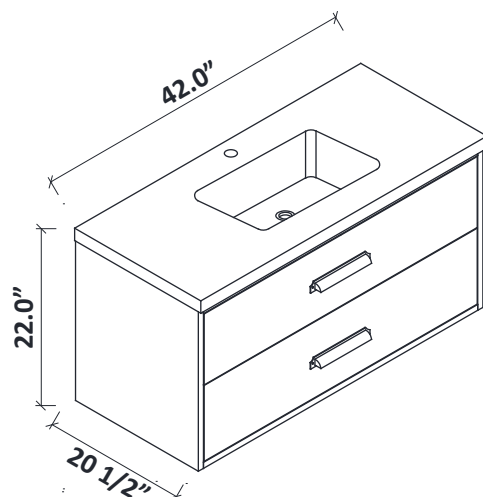
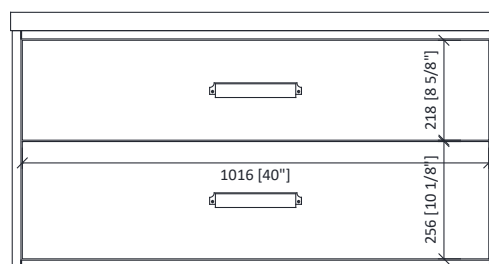
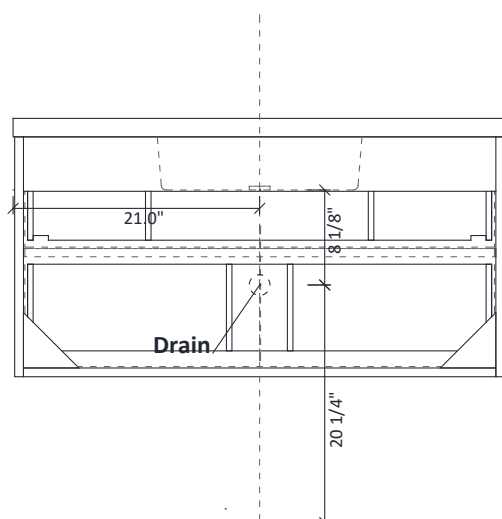
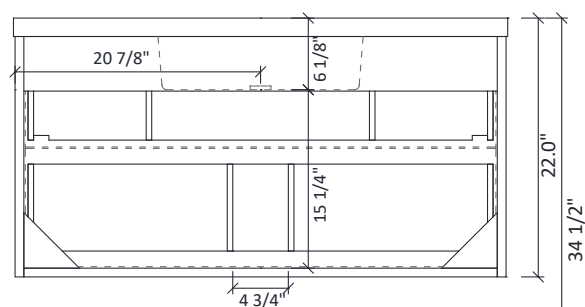
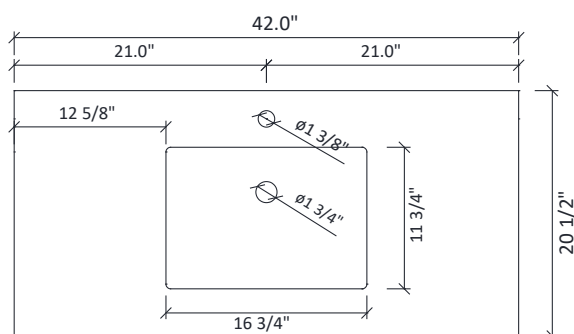


# Kane 42 Floating Vanity Installation Instruction



## DIMENSIONS



### **WARNING !**

*In the hole on the wall, please be sure to be careful to avoid the internal cables and pipelines.*








## MATERIALS & TOOLS

*Safety glasses, Pencil, Level, Tape measure, Stud Finder, Assorted screwdrivers, Assorted Wrenches, Drill, Screw gun, Caulking gun, Hammer, Screws, Nail anchors/Molly screws.*

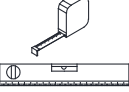



# Vanity Installation

## Step 1

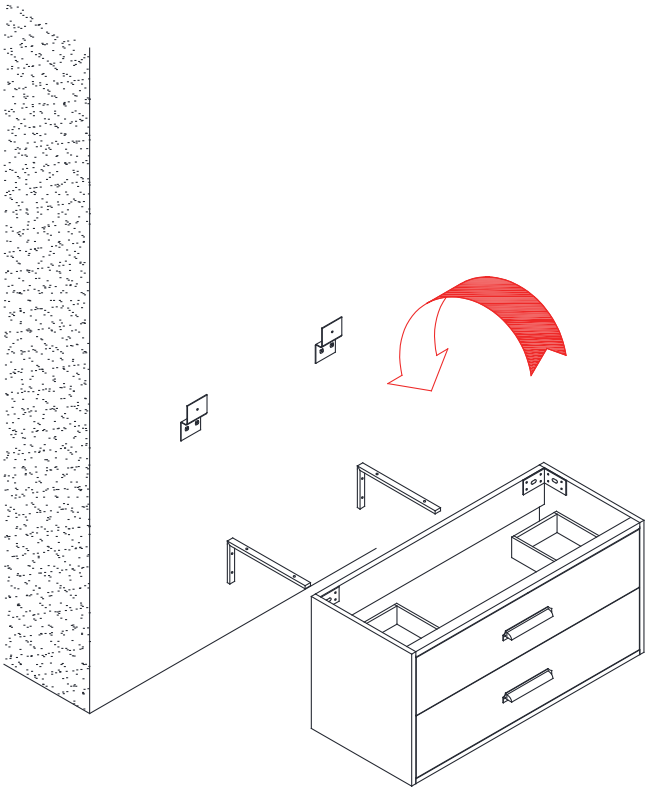
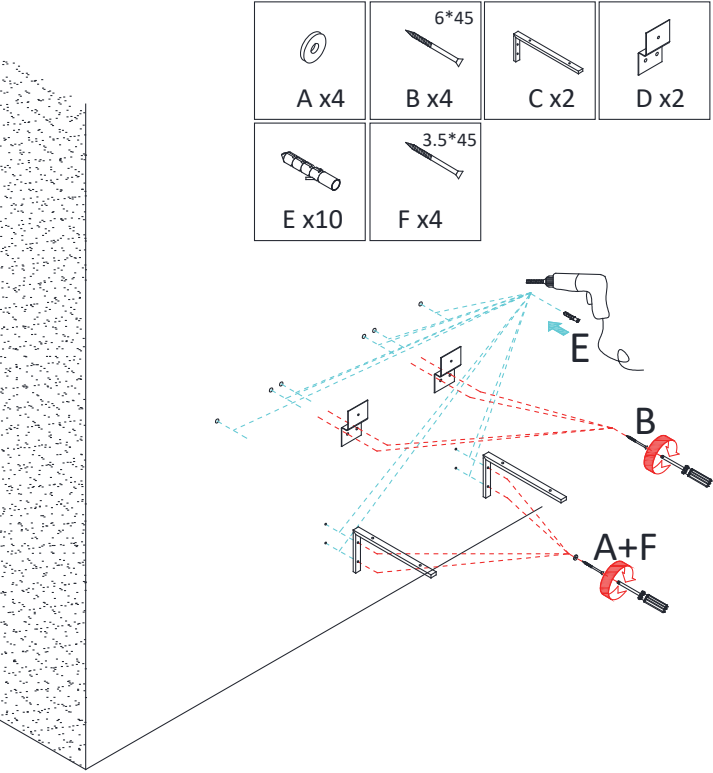
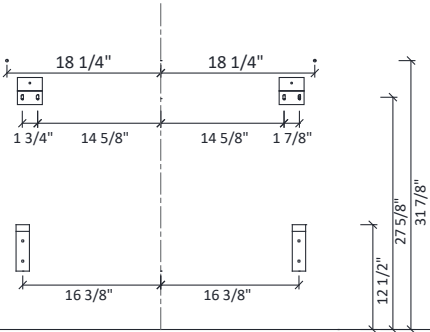
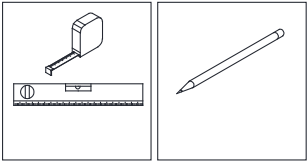
### PARTS

 A x6	 B x6	 C x2	 D x2
 E x10	 F x4	 G x2	

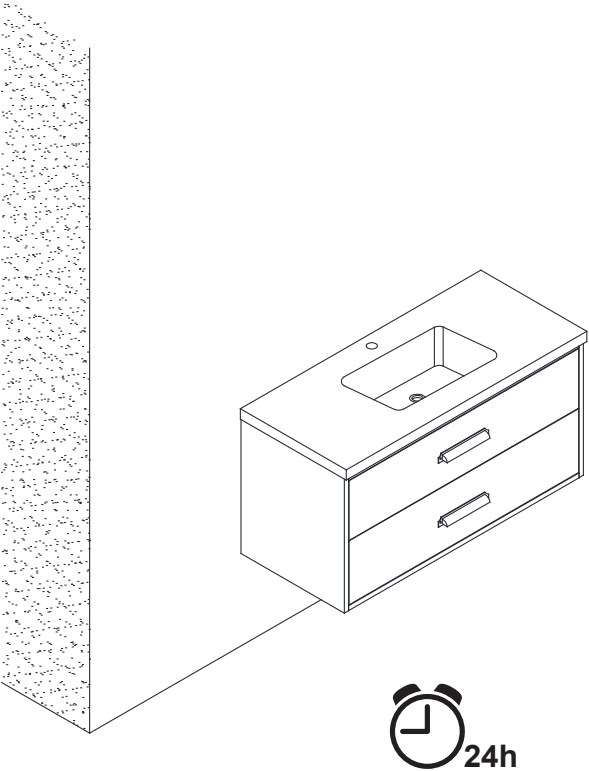
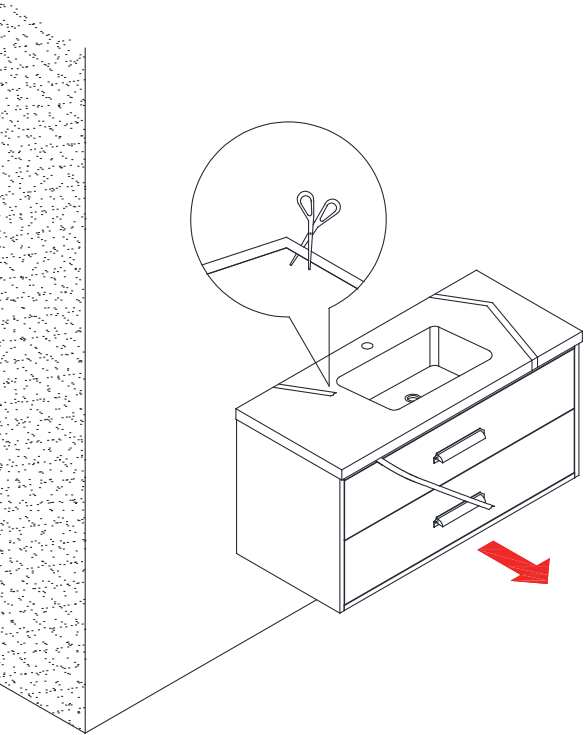
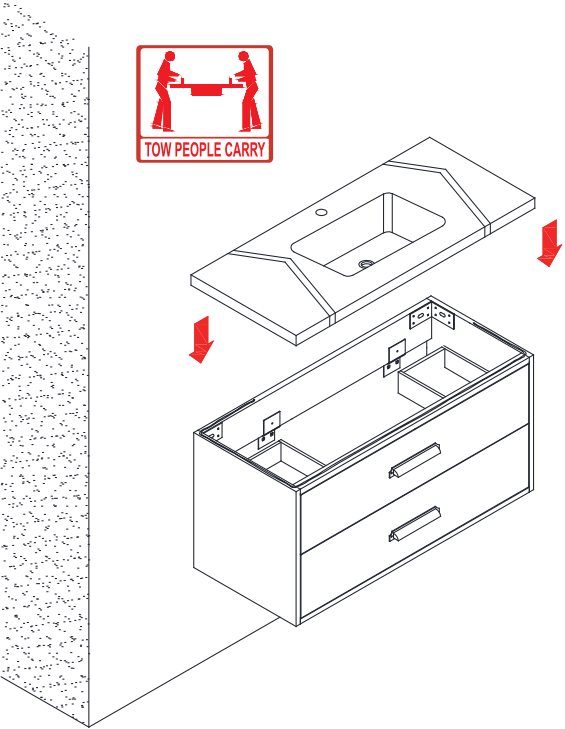
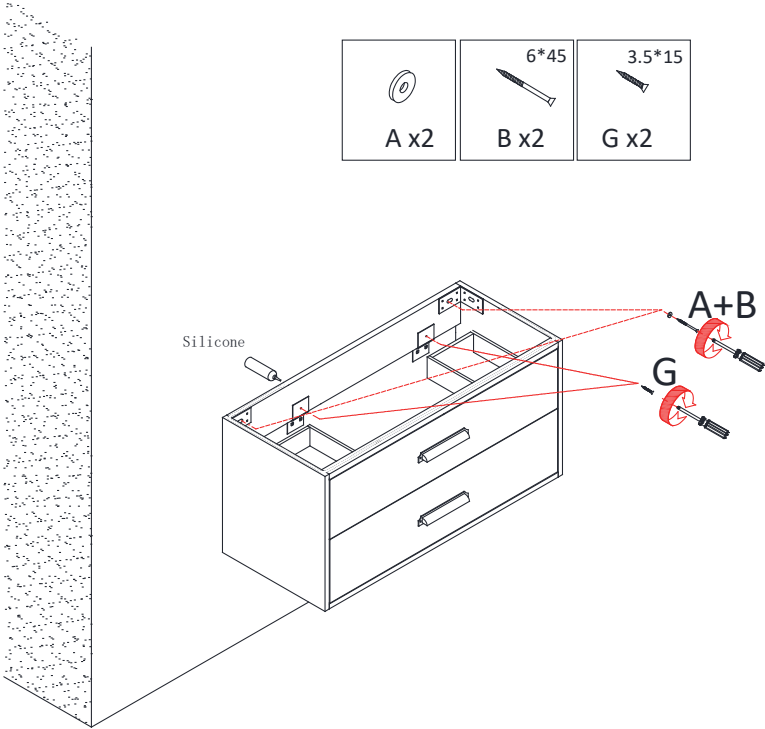
### TOOLS REQUIRED

			
--	---	---	---

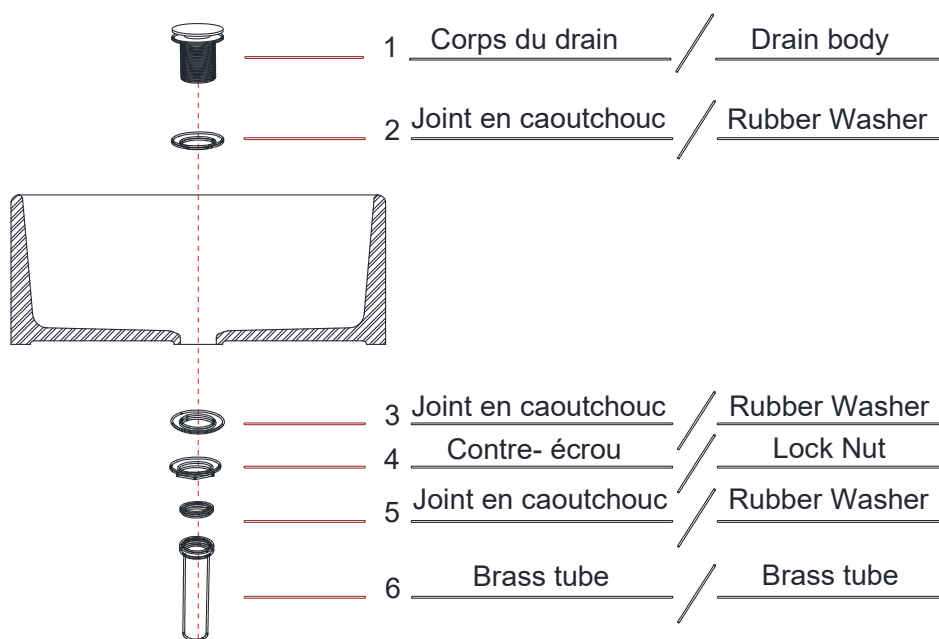
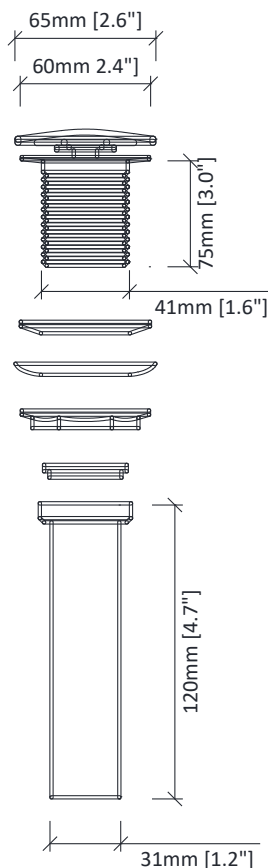
## Step 2



# Vanity Installation



# Drain Installation Instruction



## **WARNING !**

*In the hole on the wall, please be sure to be careful to avoid the internal cables and pipelines.*

Installing all hardware components  
can reduce risk occurrence



# IMPORTANT CHILD SAFETY



1. For the installation process of this product, please install the product according to the steps of the product manual.
2. Unless specifically designed to accommodate, **DO NOT** set heavy objects on top of this product.
3. **Never** allow children to climb or hang on drawers, doors or shelves.
4. **Never** open more than one drawer at a time.
5. **DO NOT** tamper with or remove the drawer interlock system.
6. Use of anti-tip restraints may only reduce, but not eliminate, the risk of tip-over.
7. If hardware kit is missing, Please contact us.

**CLIMBING ON THIS PRODUCT MAY RESULT IN SERIOUS INJURY**