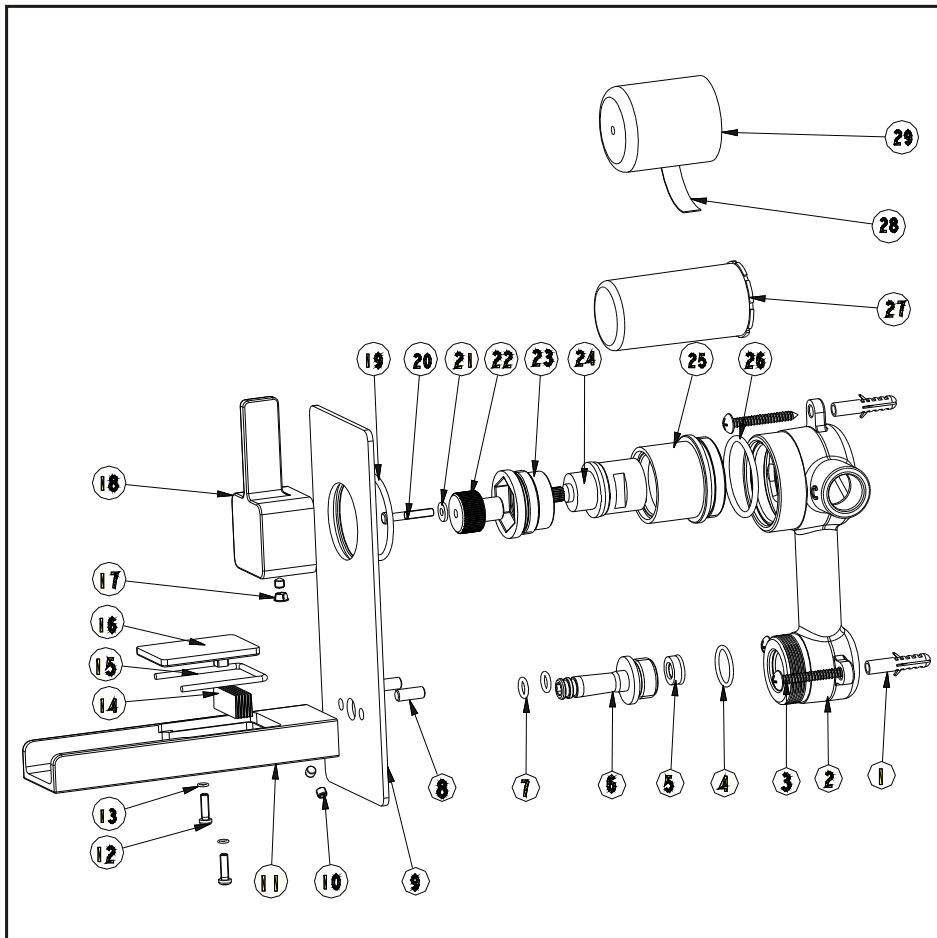


# Wall mounted basin mixer

EB\_FM002V

## Installation Instruction

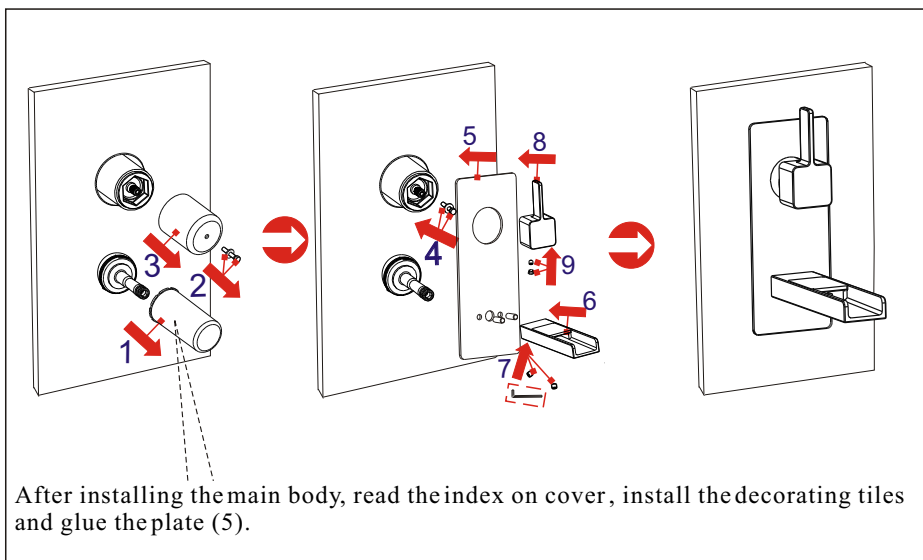
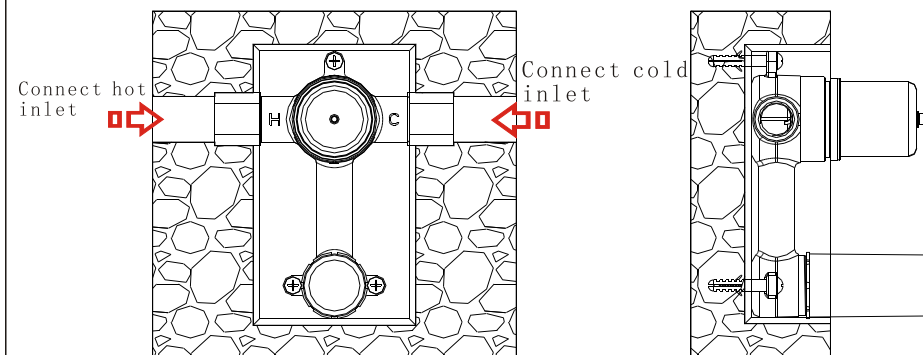
Please read this instruction carefully so as to avoid the installation difficulty.



## Components List

No.	Component	Quantity
1	Plastic sleeve	3
2	Main body	1
3	Cross-head screw	3
4	O-ring	1
5	Flow rate controller	1
6	Union	1
7	O-ring	2
8	Setting pin	2
9	Plate	1
10	Female allen screw	3
11	Spout	1
12	Cross-head screw	2
13	O-ring	2
14	Net	1
15	O-ring	1
16	Decorating cover	1
17	Plug	1
18	Handle	1
19	Sealing strip	1
20	Cross-head screw	1
21	Flat washer	1
22	Union	1
23	Cartridge fastener	1
24	Ceramic head part	1
25	Cartridge seat	1
26	O-ring	1
27	Safe cover for diverter	1
28	Index	1
29	Safe cover for cartridge	1

## Installation Step

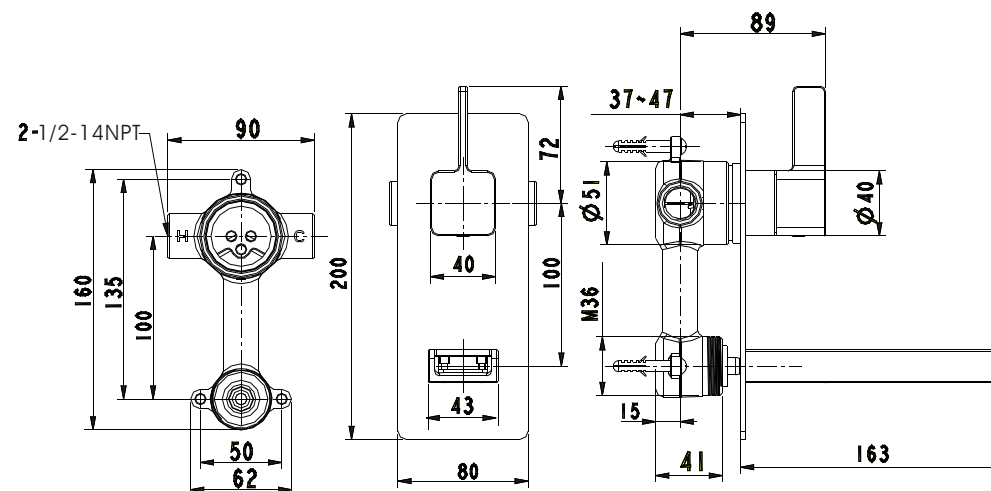


✱ See the fig for the position of the valve and inlet pipes.

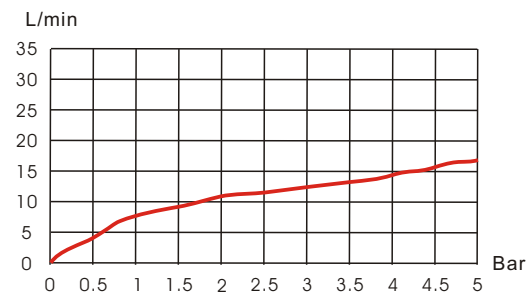
### ✱✱ Test:

Open the supply pipes, close the ceramic cartridge and check any leakage; open the ceramic cartridge and check the smooth water flow. Having tested, install the valve to the wall, take the safe cover apart and install the plate and handle.

## Installation Fig



## Flow rate Curves



Test pressure: 1.6MPa (16bar)

Flow pressure:

Min 0.05MPa

Max 1.60MPa

Recommended pressure:

0.1MPa to 0.8MPa (1 to 8 bar)

## Note

- 1.Ensure to clean the water supply pipe before installing to avoid being jammed.
- 2.The cold-water supply must be connected on the right and the hot-water supply on the left.
- 3.Check the installing dimension according to the Figure and ensure it is installed correctly.
- 4.Hot-water inlet must not be over 80°C.