

CU183450



Kitchen Series 14" Undermount Stainless Steel Bar/Prep Sink

Universal Type

GENERAL

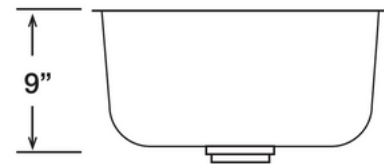
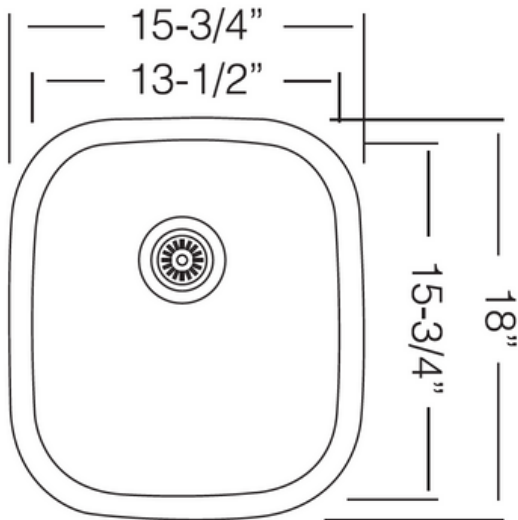
Fine quality sink bowl formed of 18 gauge BA 304 18/10 nickel bearing stainless steel.

DESIGN FEATURES

- Bowl Depth : 9"
- Finish : Soft Satin Finish
- Underside : Sound absorbing pads and special paint applied to dampen sound
- Drain Opening : 3-1/2"

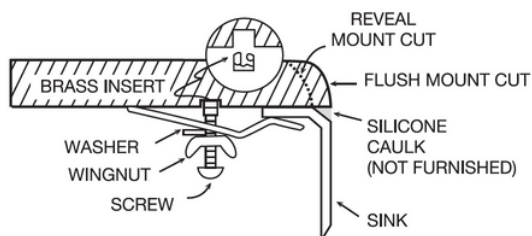


SINK DIMENSIONS (INCHES)

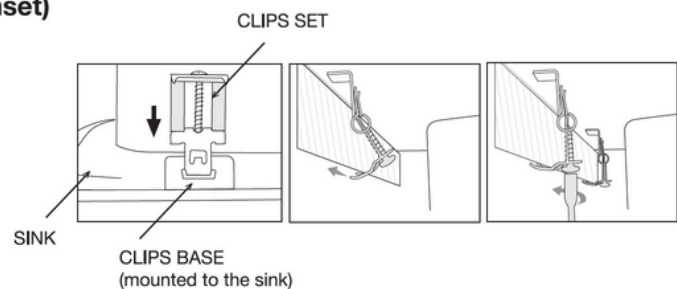


Recommended Cabinet Size 16"

INSTALLATION PROFILE*



(Inset)



*Template and countertop mounting clips are packed with every sink

