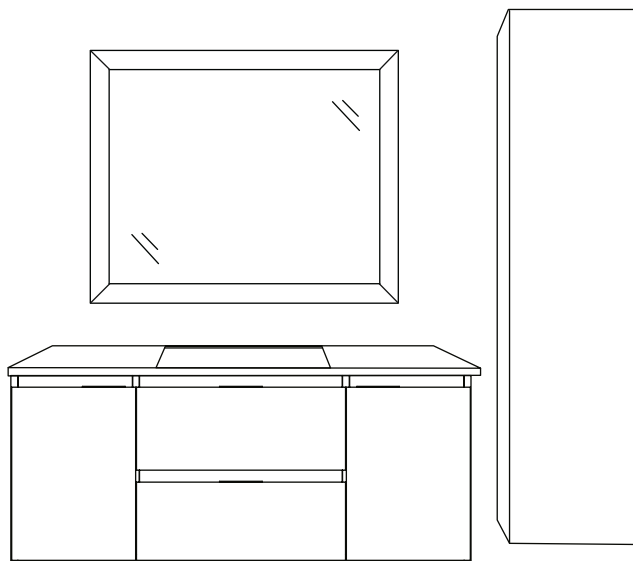




ANZZI®

ITEM: VT-MRSCCT48

ANZZI BATHROOM VANITY  
INSTALL & OPERATION MANUAL  
V1.0



**DON'T WAIT!  
REGISTER NOW!**

Register your product within 90 days to ensure your product is recognized as an official purchase and is eligible for warranty coverage.

Mail in the completed registry card (Pg. 2) or register online at [www.swcorp.com/register](http://www.swcorp.com/register).



## PRODUCT REGISTRATION\*

**IMPORTANT: YOUR WARRANTY WILL NOT BE RECOGNIZED UNLESS THIS CARD IS FULLY COMPLETED AND RETURNED OR ONLINE REGISTRATION IS COMPLETED.**

**To ensure that your warranty is registered and confirmed please do one of the following:**

- 1. Register online at [www.swcorp.com/register](http://www.swcorp.com/register).** You will be asked to fill out the same information you would in the registration card. Registering online is fast, secure and ensures we receive your information.
- 2. Complete, cut-out and mail the registration card below.** By returning this registration card we confirm the date of purchase for your new product. This confirmation will allow us to process any warranty claims.

**Mail the card to: 5701 NW 35 Avenue, Miami, FL 33142**



CUT ALONG  
DOTTED LINE.

### Product Registration Card

Name ..... Address .....

City ..... State ..... Zip .....

Phone ..... Email.....

Date of Purchase.....

Installer's Name ..... Phone .....

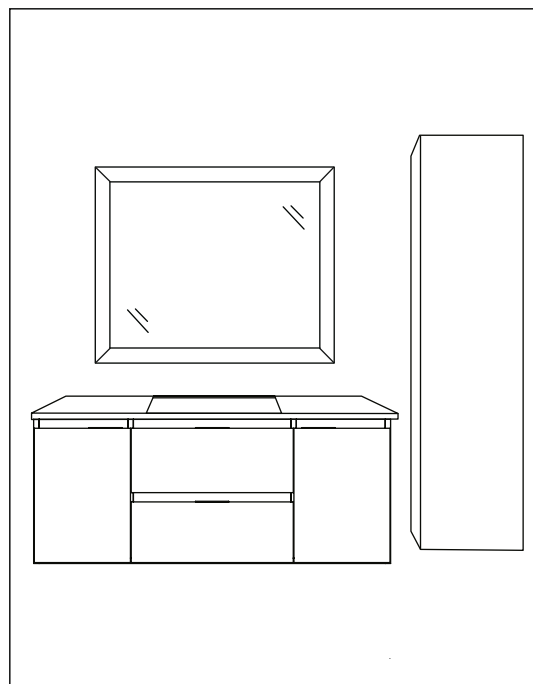
I have read the Owner's Manual carefully and understand and agree that any installation, operation or maintenance of the product must be done strictly in accordance with instructions and guidelines contained in the owner's manual and installation guide.

Signature ..... Date .....

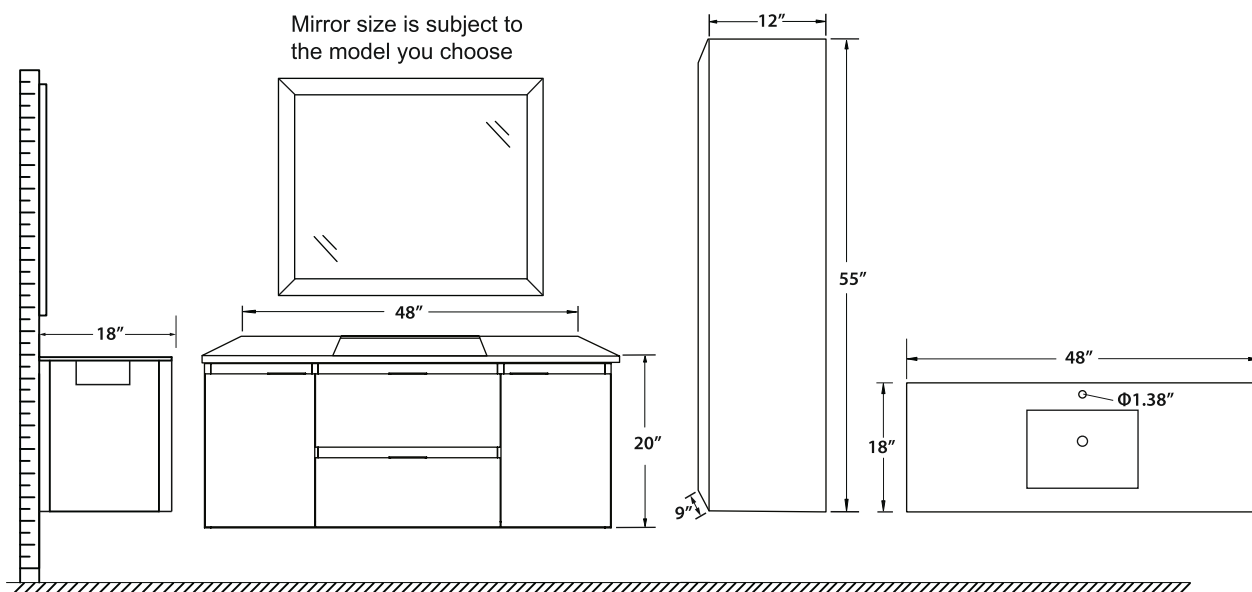
**Need assistance? Call our technical support line at 305-614-4070 or visit us at [www.ANZZI.com](http://www.ANZZI.com)**

# CONQUES SERIES

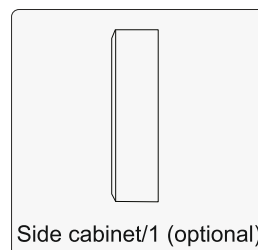
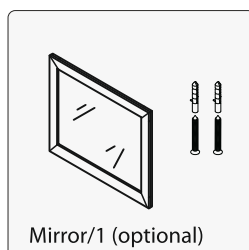
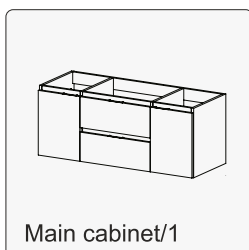
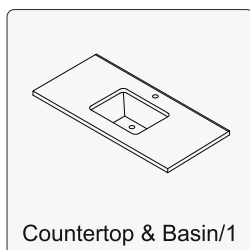
- Please check your product packaging to make sure the included accessories are in the “list of standard accessories”. If any parts are missing, please contact your local dealer immediately.
- Do not allow any sharp objects to come in contact with the cabinet, as it will scratch the surface.
- Continuous and prolonged exposure to direct sunlight may cause discoloration to the wood.
- Do not put any hot appliances directly on or near the cabinet.
- Please avoid using cleaning products that contain bleach or ammonia.
- Wood surfaces should only be cleaned with wood care products such as soapy water or furniture polish.



## INSTALLATION



## MAIN BODY PARTS



## INSTALLATION PARTS

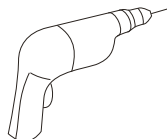
## TOOLS NEEDED



Tape



Pencil



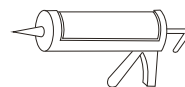
Impact Drill



Levelling Instrument



Screw driver

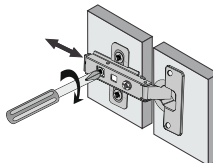
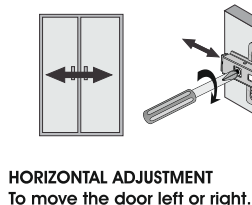
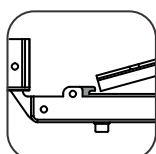
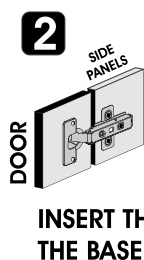
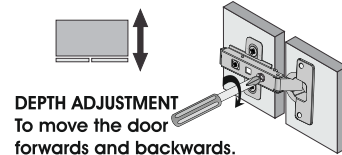
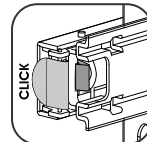
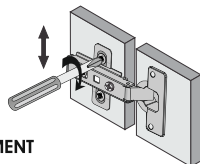
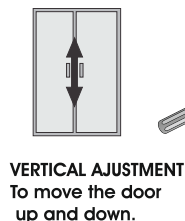
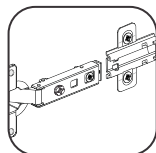
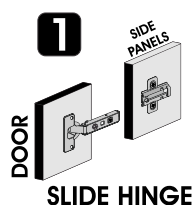


Glass Glue Gun



STUD FINDER

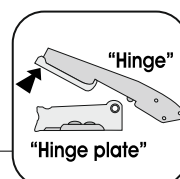
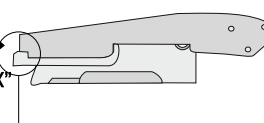
## INSTALL,REMOVE,ADJUST OF TOP FAST LOADING HINGE



TO REMOVE THE DOOR USE THE FOLLOWING ACTION:

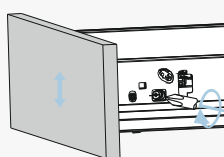


"CLICK"

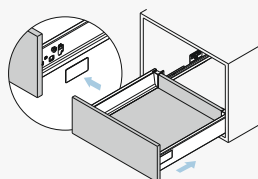


## DRAWER ASSEMBLY AND REMOVAL(WITH PEG)

### Drawer adjustment

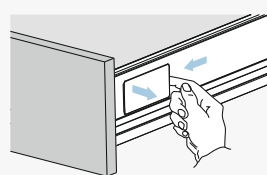


Adjusted the up and down

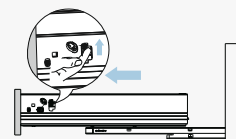


Roll in the drawer

### Drawer removal

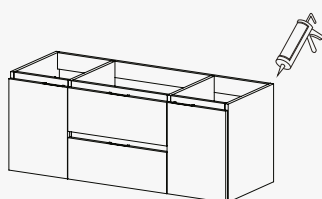


Pry up the cover

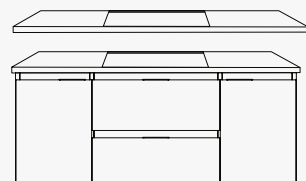


Lift up the device and pull out the drawer

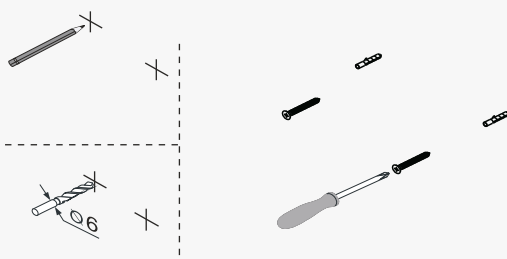
## INSTALLATION INSTRUCTIONS



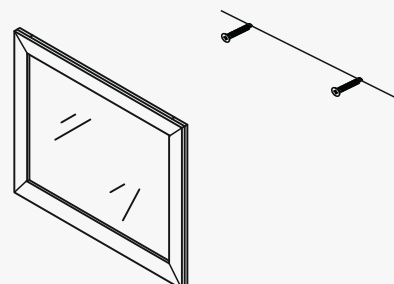
① Apply appropriate silicone on the top of the cabinet.



② Install Counter Top.



③ Fix the mirror



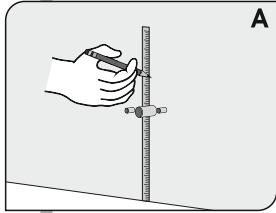
④ Hang the mirror

# GUIDE TO MOUNTING THE CABINET ON THE WALL

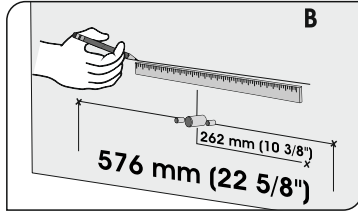
## 1

### ATTACHING THE MOUNTING PLATE

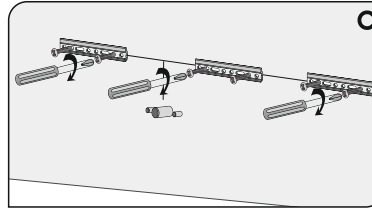
Be aware that the connections height match with the installation desire height of the cabinet, otherwise it is necessary to do plumbing work first



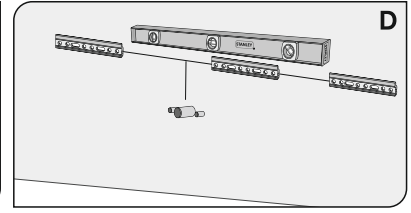
INSTALL THE MOUNTING PLATE AT YOUR DESIRED HEIGHT. MEASURE FROM THE EDGE OF THE FLOOR UP



DRAW A LINE IN THE CENTER OF THE DRAIN. THEN TAKE THE MEASUREMENT IN THE DRAWING BOTH SIDES OF THE DRAIN AND MARK THEM WITH AN X



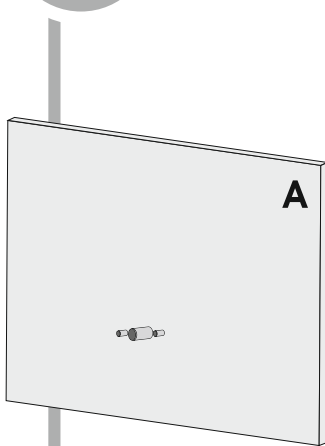
INSERT 2 ANCHORS PER MOUNTING PLATE WHERE THE X ARE USING A DRILL WITH A HEXAGONAL BIT



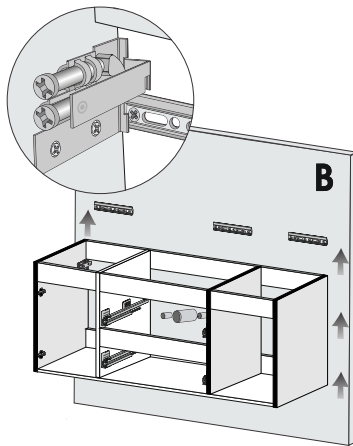
WITH THE LEVEL OVER THE MOUNTING PLATES MAKE SURE THAT THEY ARE LEVELED ON BOTH SIDES.

## 2

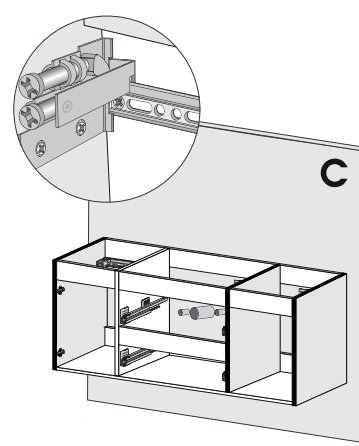
### HANG THE CABINET ON THE WALL



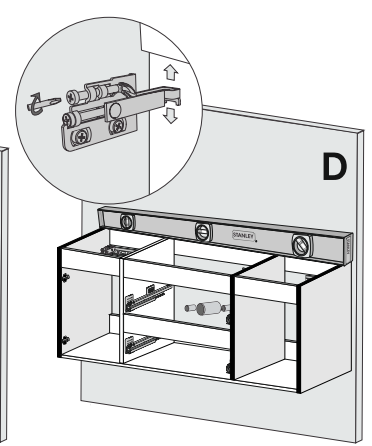
BE AWARE THAT THE CONNECTIONS HEIGHT MATCH WITH THE CABINET, OTHERWISE IT IS NECESSARY TO DO PLUMBING WORK FIRST



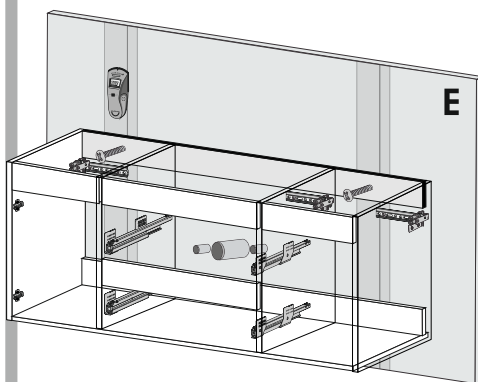
WITH TWO OR MORE PEOPLE LIFT THE CABINET UP ONTO THE MOUNTING PLATE.



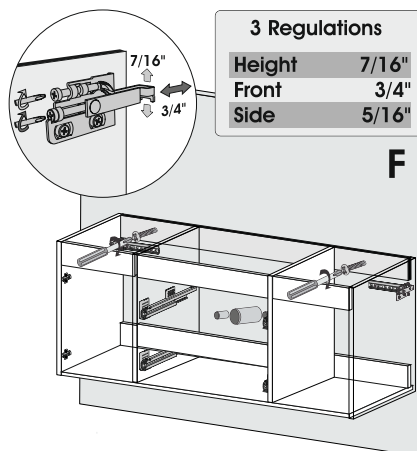
MAKE SURE THAT THE HANGER IS ATTACHED TO THE PLATE.



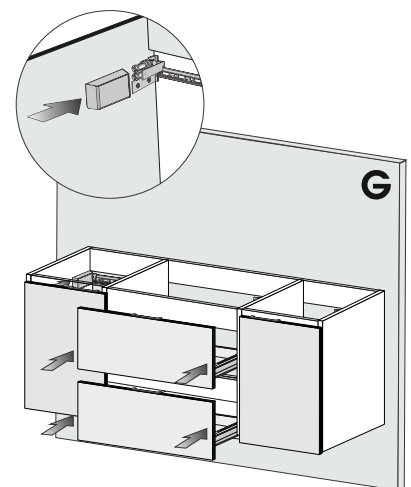
LEVEL THE CABINET.



IF YOU ARE UNCERTAIN ABOUT THE ABILITY OF WALL TO SUPPORT HEAVY WEIGHTS, YOU CAN SECURE THE CABINET AT ONE OR MORE ADDITIONAL POINTS ALONG THE UPPER HORIZONTAL RAIL AT THE BACK OF THE CABINET. FIND THE ADDITIONAL POINTS WITH THE STUD FINDER



MAKE SURE THAT THE HANGERS ARE COMPLETELY ATTACHED TO THE PLATE AND THEN TIGHTEN THE ANCHORS.

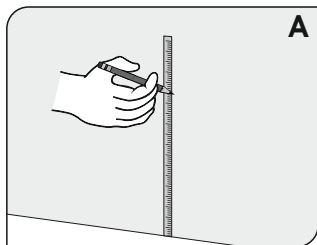


INSTALL THE DRAWERS AND PLACE THE HANGER COVERS OVER THE HANGERS.

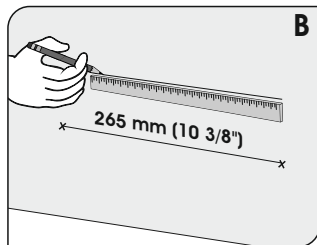
# GUIDE TO MOUNTING THE CABINET ON THE WALL

## 1

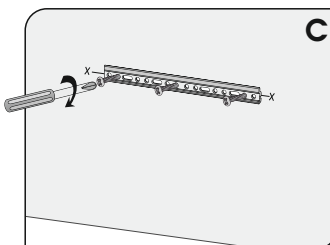
### ATTACHING THE MOUNTING PLATE



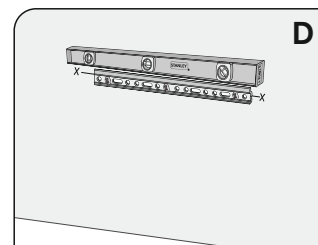
**INSTALL THE MOUNTING PLATE AT YOUR DESIRED HEIGHT. MEASURE FROM THE EDGE OF THE FLOOR UP**



**MARK A HORIZONTAL LINE WITH THE MEASUREMENTS IN THE DRAWING, MARK THEM WITH AN X**



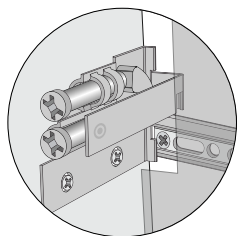
**INSERT 3 ANCHORS PER MOUNTING PLATE WHERE THE X ARE USING A DRILL WITH A HEXAGONAL BIT**



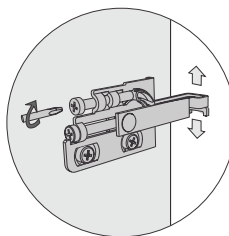
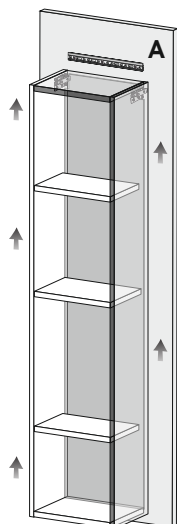
**WITH THE LEVEL OVER THE MOUNTING PLATES MAKE SURE THAT THEY ARE LEVELED ON BOTH SIDES.**

## 2

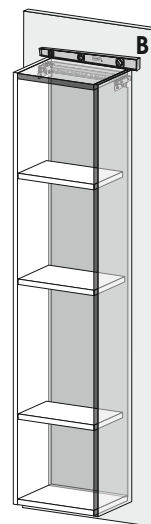
### HANG THE CABINET ON THE WALL



**WITH TWO OR MORE PEOPLE LIFT THE CABINET UP ONTO THE MOUNTING PLATE.**

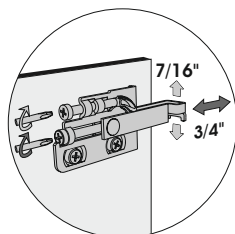


**LEVEL THE CABINET.**

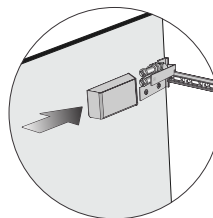
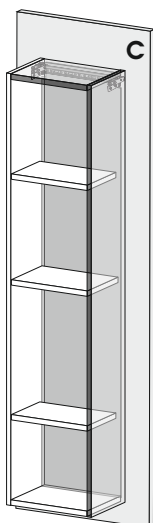


#### 3 Regulations

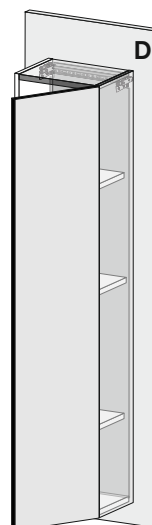
Height	7/16"
Front	3/4"
Side	5/16"



**MAKE SURE THAT THE HANGERS ARE COMPLETELY ATTACHED TO THE PLATE AND THEN ADJUST THEM IF NECESSARY**

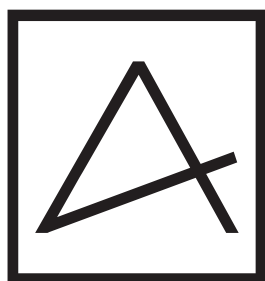


**INSTALL THE DOOR AND PLACE THE HANGER COVERS OVER THE HANGERS.**



**Lot No:**





ANZZI®