



Vinnova Inc.

INSTALLATION SPECIFICATION

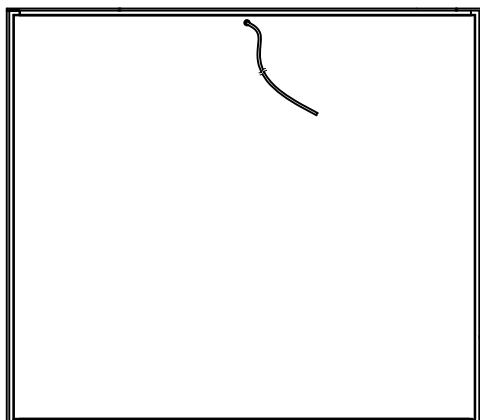
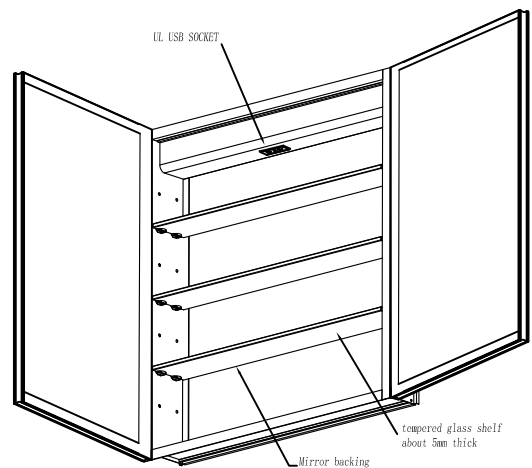
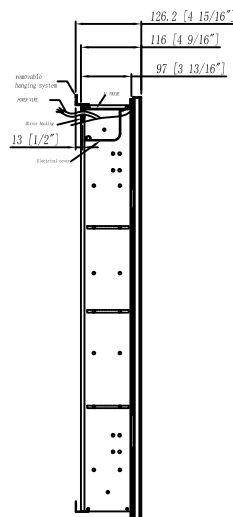
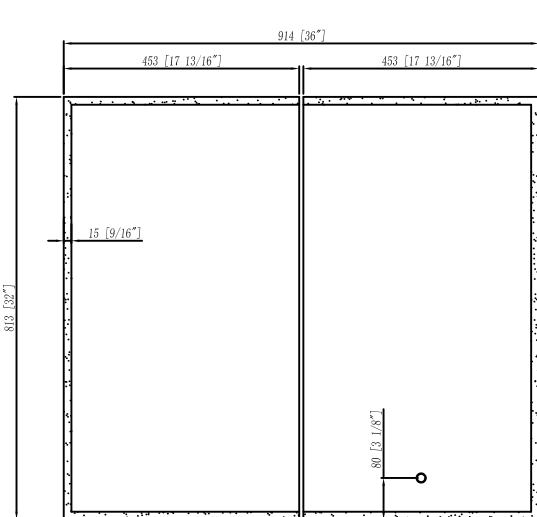
| | |
|----------------------|--------------------------------|
| Model No. | 810036R-LED-MC |
| Description | LED Mirror Cabinet |
| Overall Dimensions | 36" x 32" x 4.7" |
| LED light | CCT 3000K/4000K/6000K |
| Standard | 110V, IP44 rated |
| Net weight(LBS) | 59.5 |
| Mirror Certification | ETL |
| Mount Type | Wall Mounted |
| Orientation | Vertical |
| Power Source | Hardwired right out of the box |
| Touch-Sensitive | Yes |

Perma

36"*32"

LED Mirror Cabinet

All measurements are approximate. Measurements may vary +/- 1/2".



removable
hanging system

