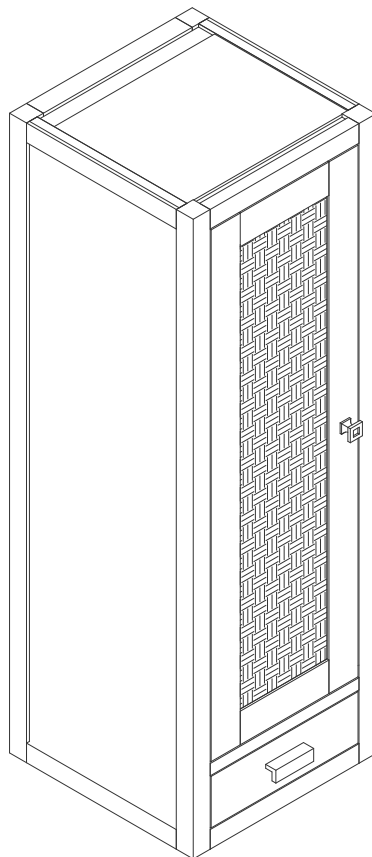


# 15"X12" ADDISON PETITE TOWER HUTCH-LEFT

E444-H12L-MCA

**JAMES MARTIN**  
VANITIES



## Features and Materials

Solids: Para Wood and Yellow Poplar

Veneers: Mango

Panels: MDF

Installation Type: Floor Standing with Wooden Stand (E444-ST12-MCA); or Coordinate with Base Cabinet(E444-BC15-MCA) & Countertop Unit(E444-CU30-MCA) or Wall Mounted

Number of Doors: One

Number of Drawers: One

Assembly Type: Attach to Wall for wall mount or base for freestanding (hardware included)

Door Panel: Reversible. One Side Finished in Mid-Century Acacia, One Side Natural Cork (Pattern: Herringbone )

Drawer Box Material and Construction:15mm Poplar/English Dovetail Joinery

Hardware Material and Finish: Zinc Alloy in Burnished Nickel

Full Extension, Soft Close Glides

European Soft Close Hinges

Aluminum Laminate Drawer Liners

## Dimension

Width: 14-7/8"

Depth: 11-7/8"

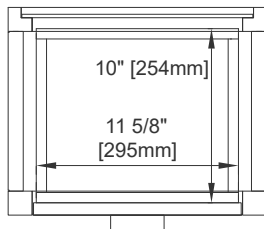
Height: 45"

# 15"X12" ADDISON PETITE TOWER HUTCH-LEFT

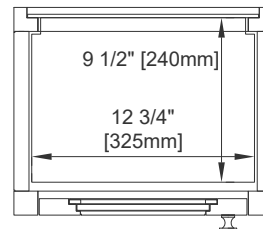
E444-H12L-MCA

# JAMES MARTIN

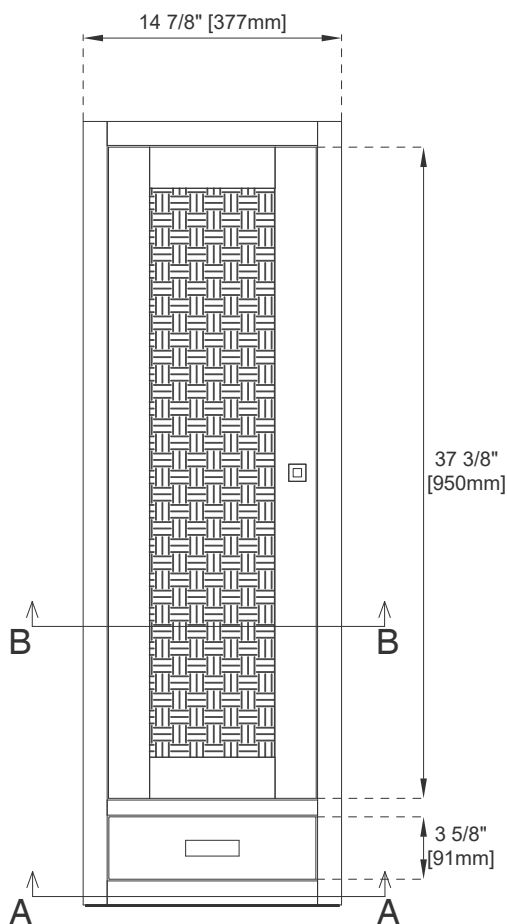
## VANITIES



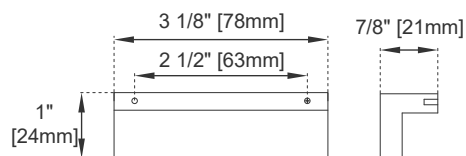
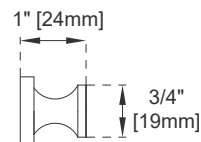
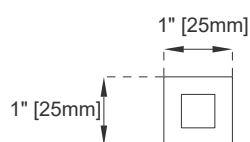
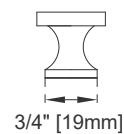
Top View 1  
Section A-A



Top View 2  
Section B-B



Front View



Knob

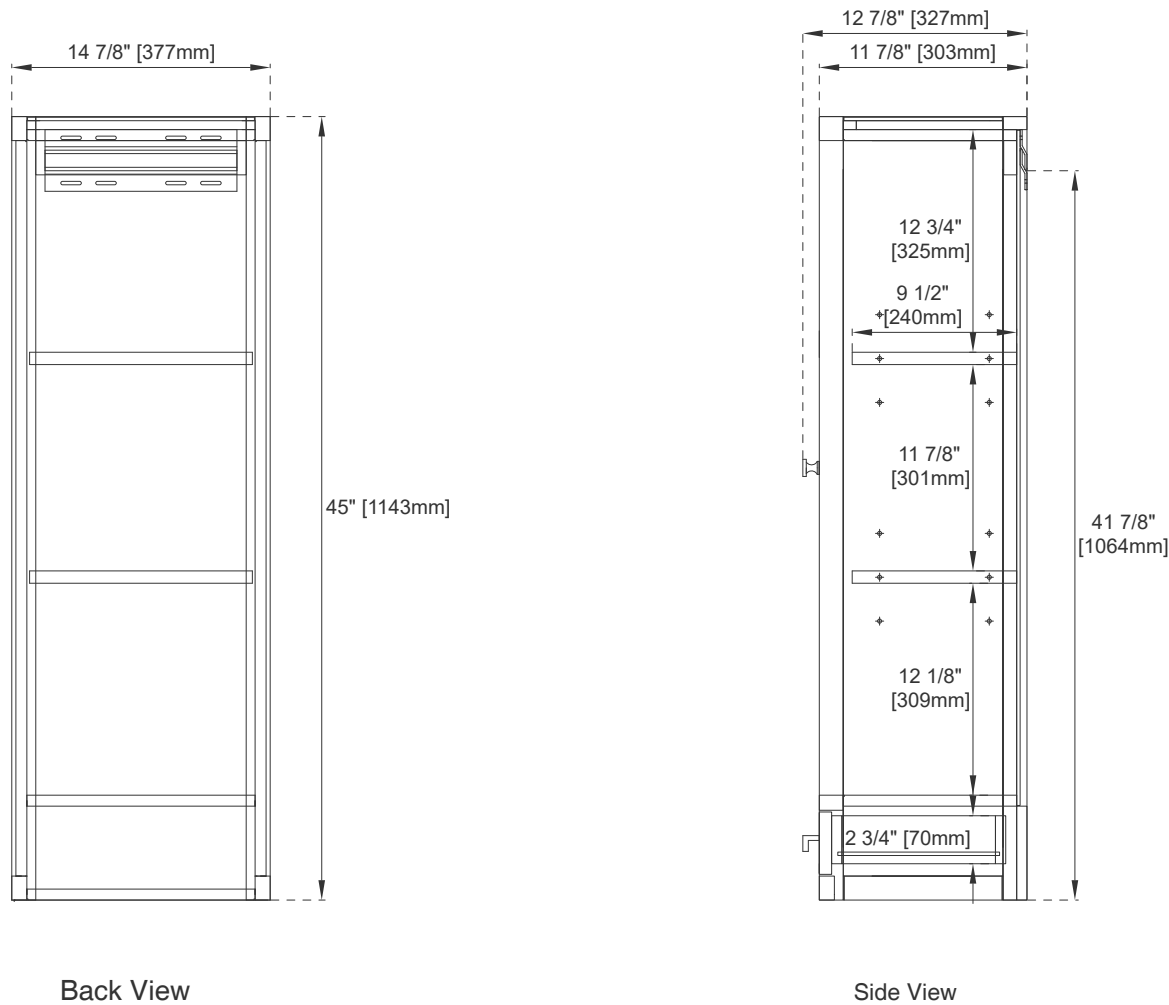
All dimensions are nominal

Visit website for warranty and installation information  
[www.jamesmartinvanities.com](http://www.jamesmartinvanities.com)

15"X12" ADDISON PETITE  
TOWER HUTCH-LEFT

E444-H12L-MCA

JAMES MARTIN  
VANITIES



All dimensions are nominal

Visit website for warranty and installation information  
[www.jamesmartinvanities.com](http://www.jamesmartinvanities.com)