

# Bello 7239SD | Air A12 Massage Series

Product Number: BEA12J7239SDFS 72" x 39" x 23.5"



## STANDARD & OPTIONAL ACCESSORIES

### JETS: 12 Total

- 12 Classic Air Jets

### PUMPS

1.0 Air Power 3-speed heated Air Pump  
Quiet Pad Anti-Vibration Mounted Pump

### CONTROLS

Air Switch On/Off Control(s)

### PURITY

HydroCleanse

### DRAINS & OVERFLOWS INFORMATION

- Overflow: Integral Round: Included- Polished Chrome.  
**Optional** - White, Biscuit, Black, Brushed Nickel, Polished Nickel, Oil Rubbed Bronze.
- Bath Drain: Pop up: Included- Polished Chrome.  
**Optional** - White, Biscuit, Black, Brushed Nickel, Polished Nickel, Oil Rubbed Bronze.
- In Floor Drain EZ Fast Connect (**optional**)

### FAUCET INFORMATION

- Floor mount (not included)
- Floor mount verify spout distance

### STANDARD ACCESSORIES

EZ Level Base • FDA Recipe Non-Toxic Food & Beverage Grade Plumbing (primarily) • 30 Point Quality Assurance Factory Test



### TECHNICAL SPECIFICATIONS

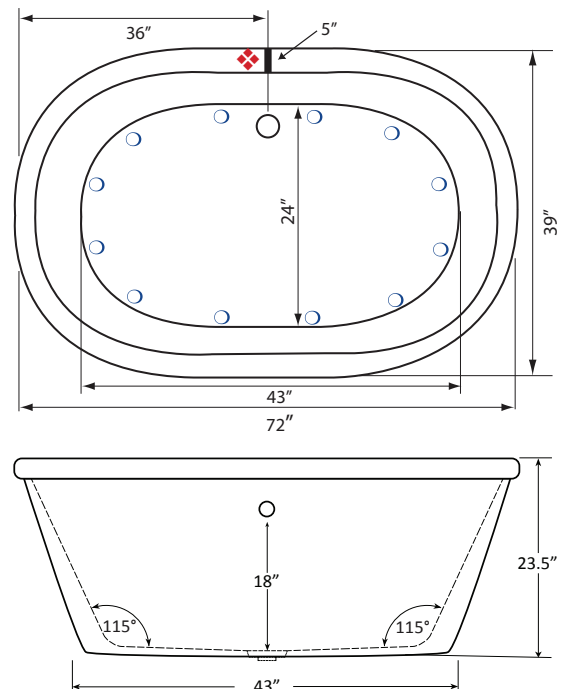
Side drain  
Pump Location: Standard Center Back

### ELECTRICAL REQUIREMENTS

(1) 115v 20AMP GFCI Circuits



Equipment Access Panel



Specifications and features are subject to change without notice and are + .25". All final measurements should be taken from tub on site.

HydroMassage Products LLC • 303-341-1845 • Fax: 303-342-1850 • [www.hydromassageproducts.com](http://www.hydromassageproducts.com)