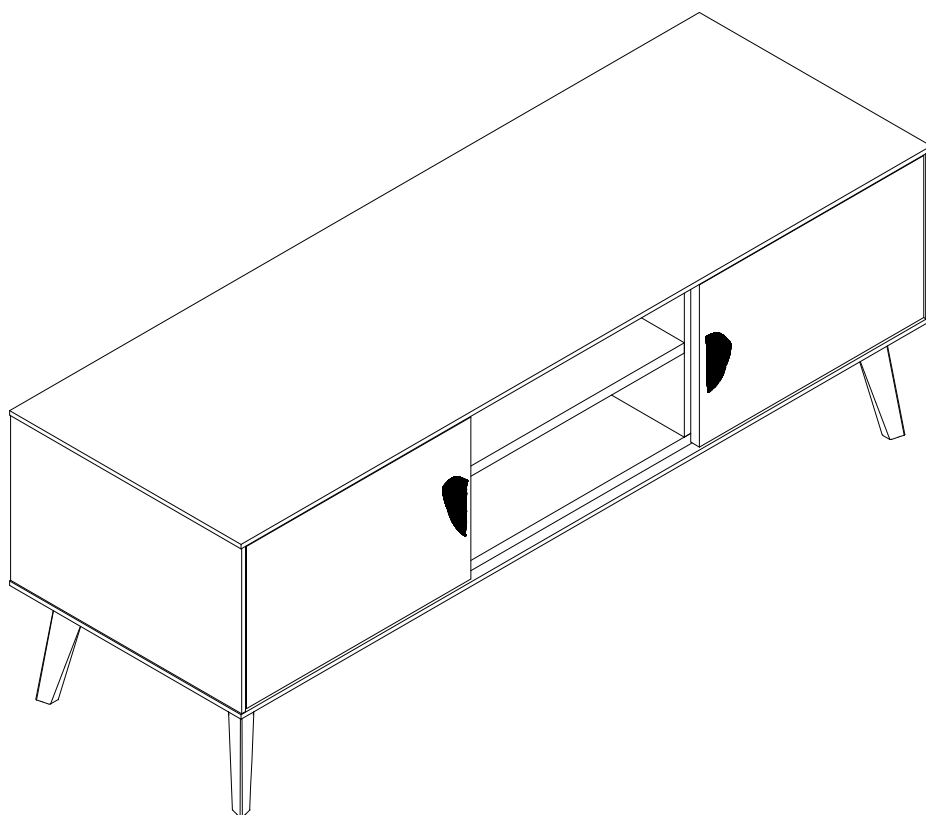




TV005



Ver. 05032024

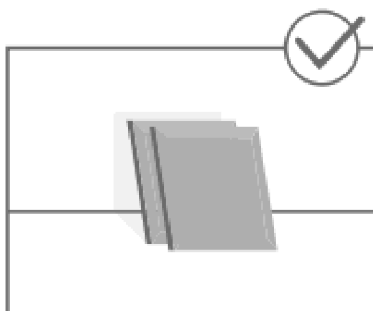
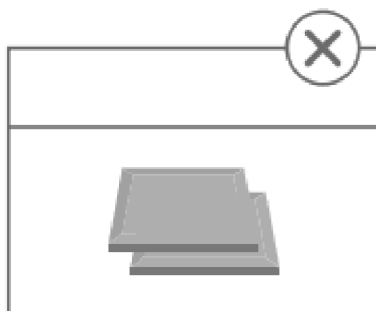
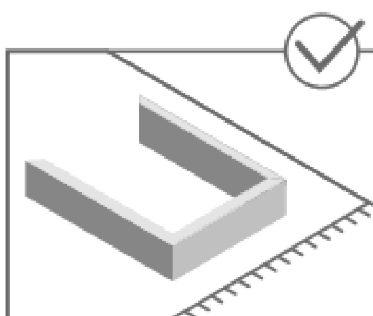
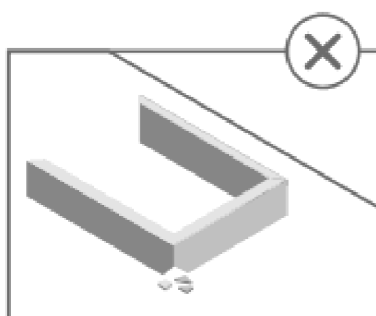


STOP!

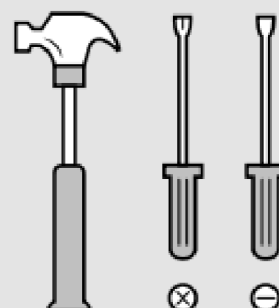
Before beginning the assembly process, ensure all boxes and parts have been delivered.

FOR BEST RESULTS:

- Do not throw away packaging materials until assembly is complete.
- Assemble item on a soft surface, such as cardboard or carpet, to protect finish.
- Proper assembly requires two people.



TOOLS REQUIRED



SUPPORT SITE



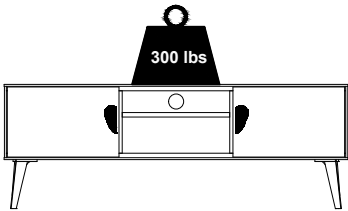
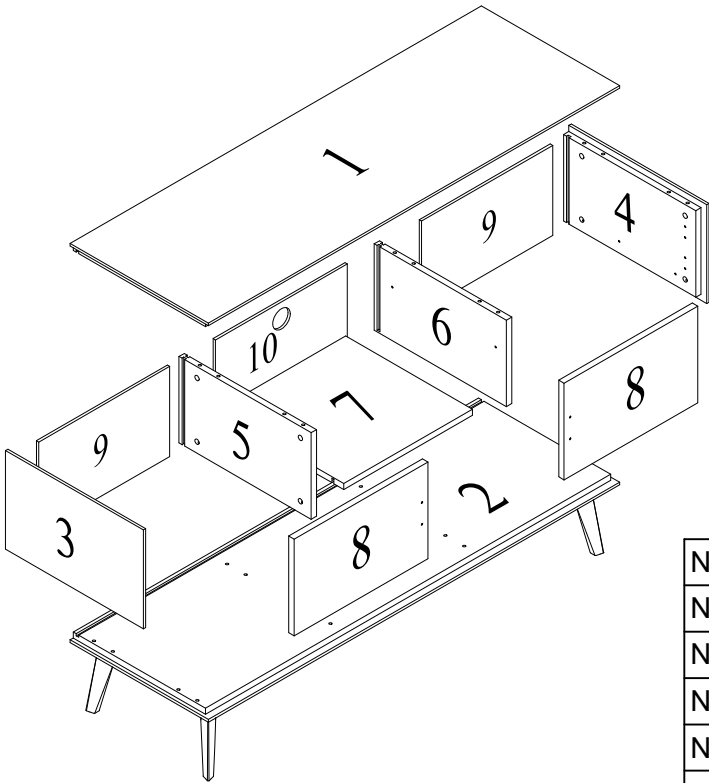
View our assembly video online:
WWW.MANHATTANCOMFORT.COM



Stuck? Question? We are here to help.
tel: 908-888-0818
e-mail: help@manhattancomfort.com



PARTS SUPPLIED FOR ASSEMBLY



NUMBER 1- TOP PANEL X1
NUMBER 2- BOTTOM PANEL X1
NUMBER 3- LEFT SIDE PANEL X1
NUMBER 4- RIGHT SIDE PANEL X1
NUMBER 5- MID LEFT SIDE PANEL X1
NUMBER 6- MID RIGHT SIDE PANEL X1
NUMBER 7- SHELF X1
NUMBER 8- DOOR X2
NUMBER 9- BACK PANEL X2
NUMBER 10- MID BACK PANEL X1
Total 14 Pcs. + Hardware Box



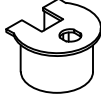
A X 16 PCS



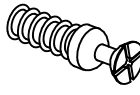
B X 16 PCS



C X 16 PCS



D X 4 PCS



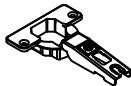
E X 4 PCS



F X 8 PCS



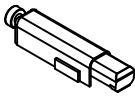
G X 12 PCS



H X 4 PCS



J X 4 PCS



K X 2 PCS



S X 2 PCS



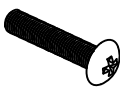
R X 16 PCS



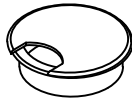
M X 16 PCS



N X 4 PCS



O X 4 PCS

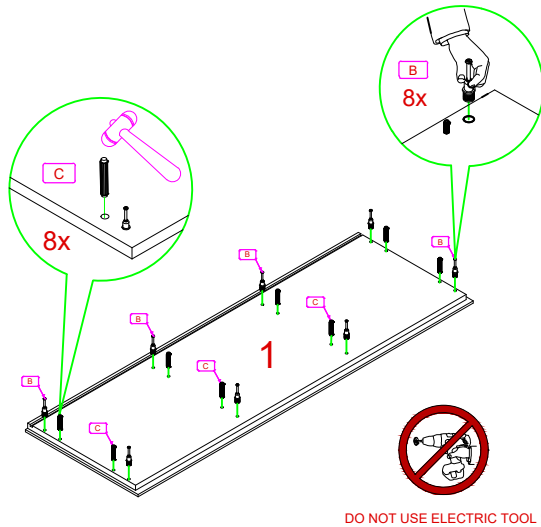


P X 1 PCS

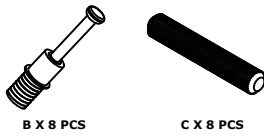
Step 1

Note: Skipping any steps could lead to improper assembly and damages.
Do not tighten the bolts before finishing all steps.

NUMBER 1: TOP PANEL X1



Hardware

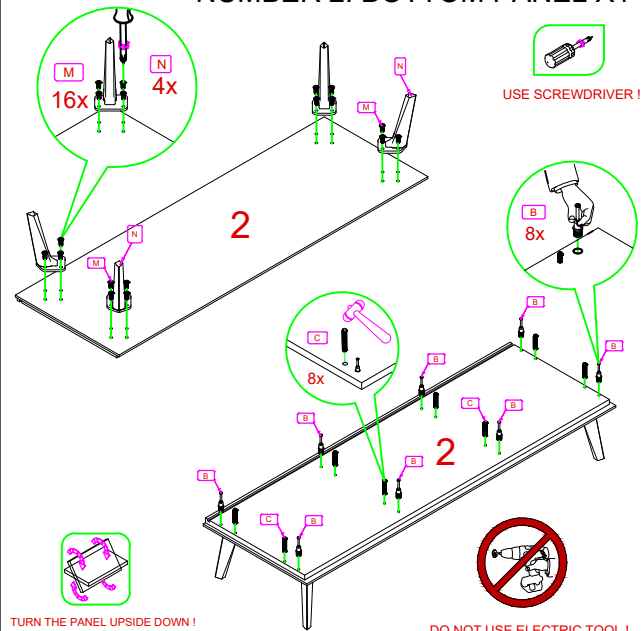


B X 8 PCS

C X 8 PCS

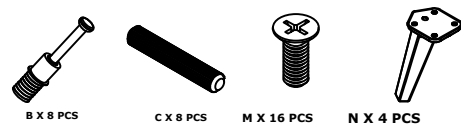
Step 2

NUMBER 2: BOTTOM PANEL X1



TURN THE PANEL UPSIDE DOWN !

Hardware



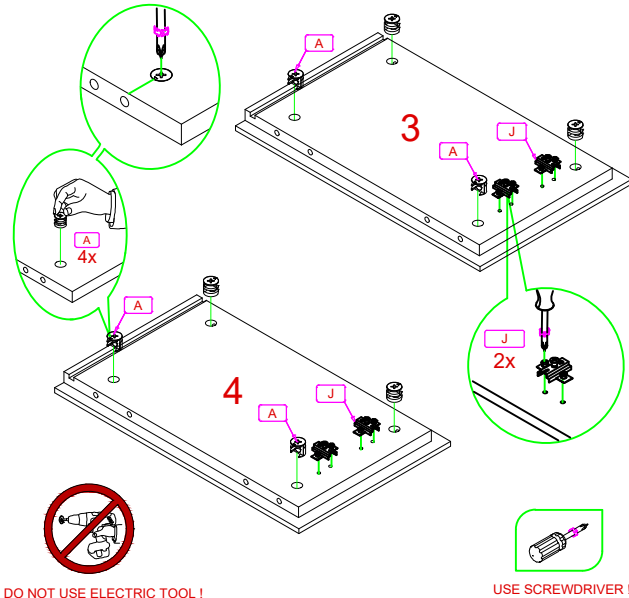
B X 8 PCS

C X 8 PCS

M X 16 PCS

N X 4 PCS

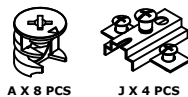
Step 3 NUMBER 3: LEFT SIDE PANEL X1 NUMBER 4: RIGHT SIDE PANEL X1



DO NOT USE ELECTRIC TOOL !

USE SCREWDRIVER !

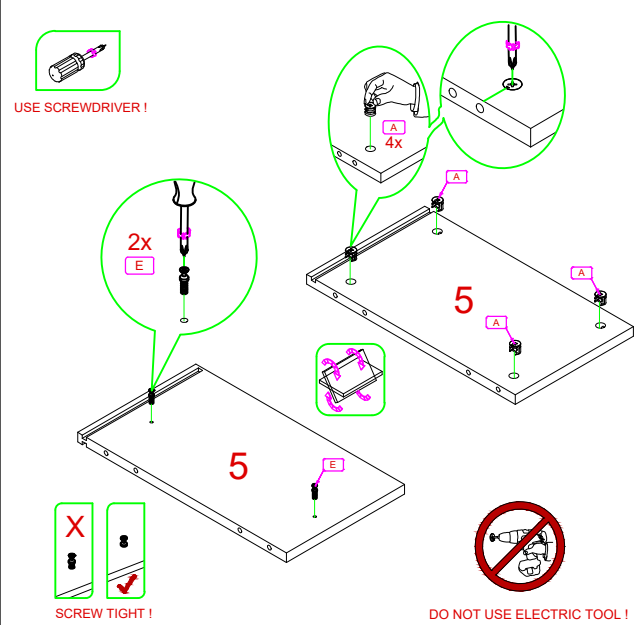
Hardware



A X 8 PCS

J X 4 PCS

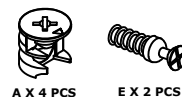
Step 4 NUMBER 5: MID LEFT SIDE PANEL X1



SCREW TIGHT !

DO NOT USE ELECTRIC TOOL !

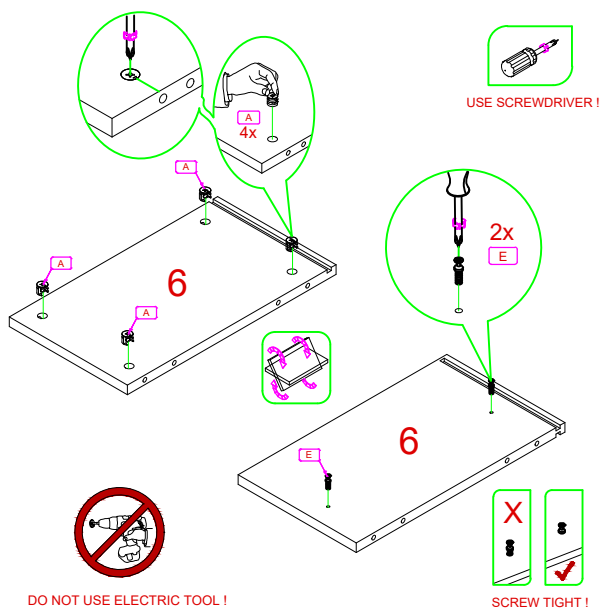
Hardware



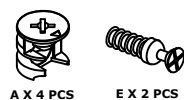
A X 4 PCS

E X 2 PCS

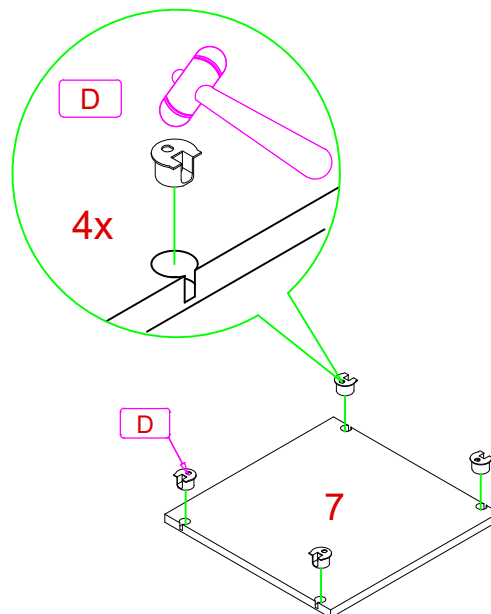
Step 5 NUMBER 6: MID RIGHT SIDE PANEL X1



Hardware



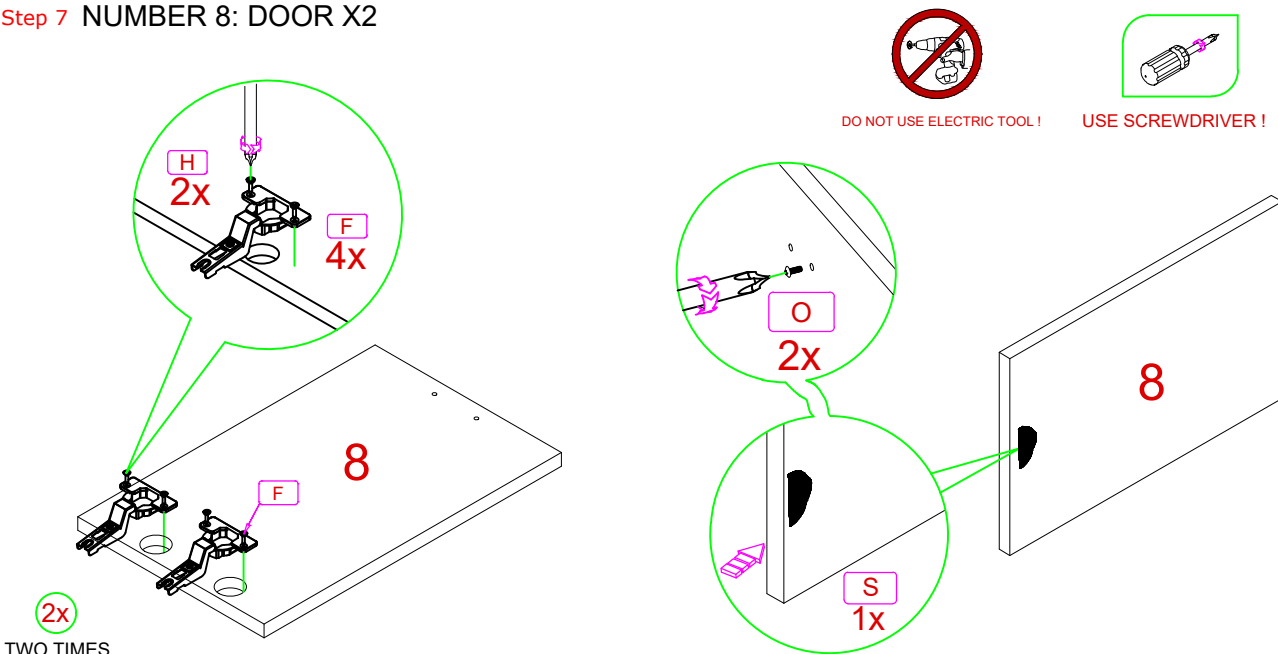
Step 6 NUMBER 7: SHELF X1



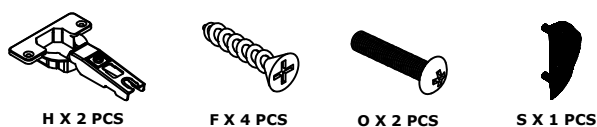
Hardware



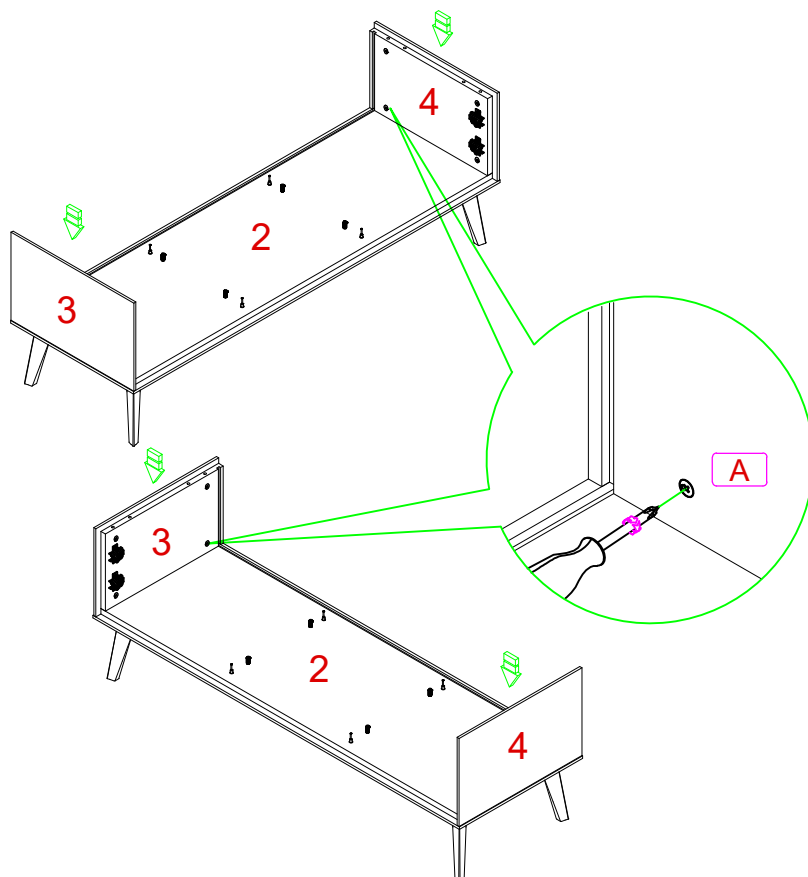
Step 7 NUMBER 8: DOOR X2



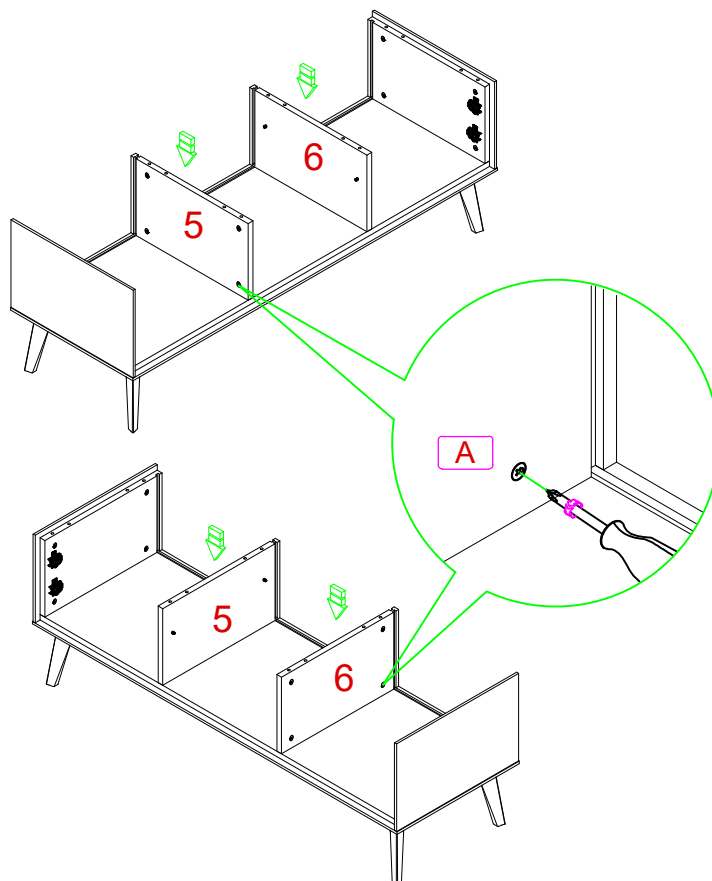
Hardware



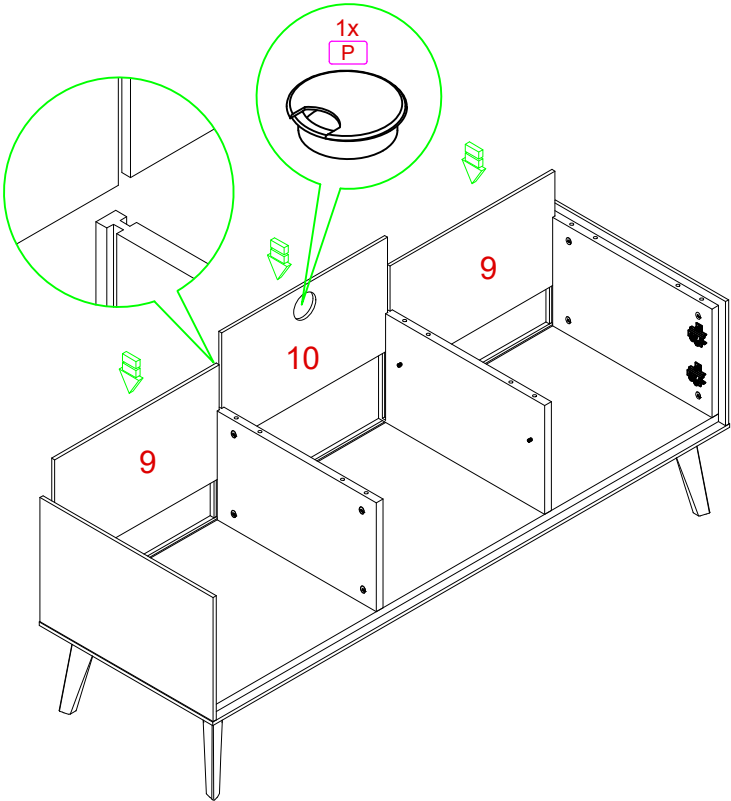
Step 8



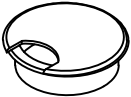
Step 9



Step 10 The groove will remain at the back.

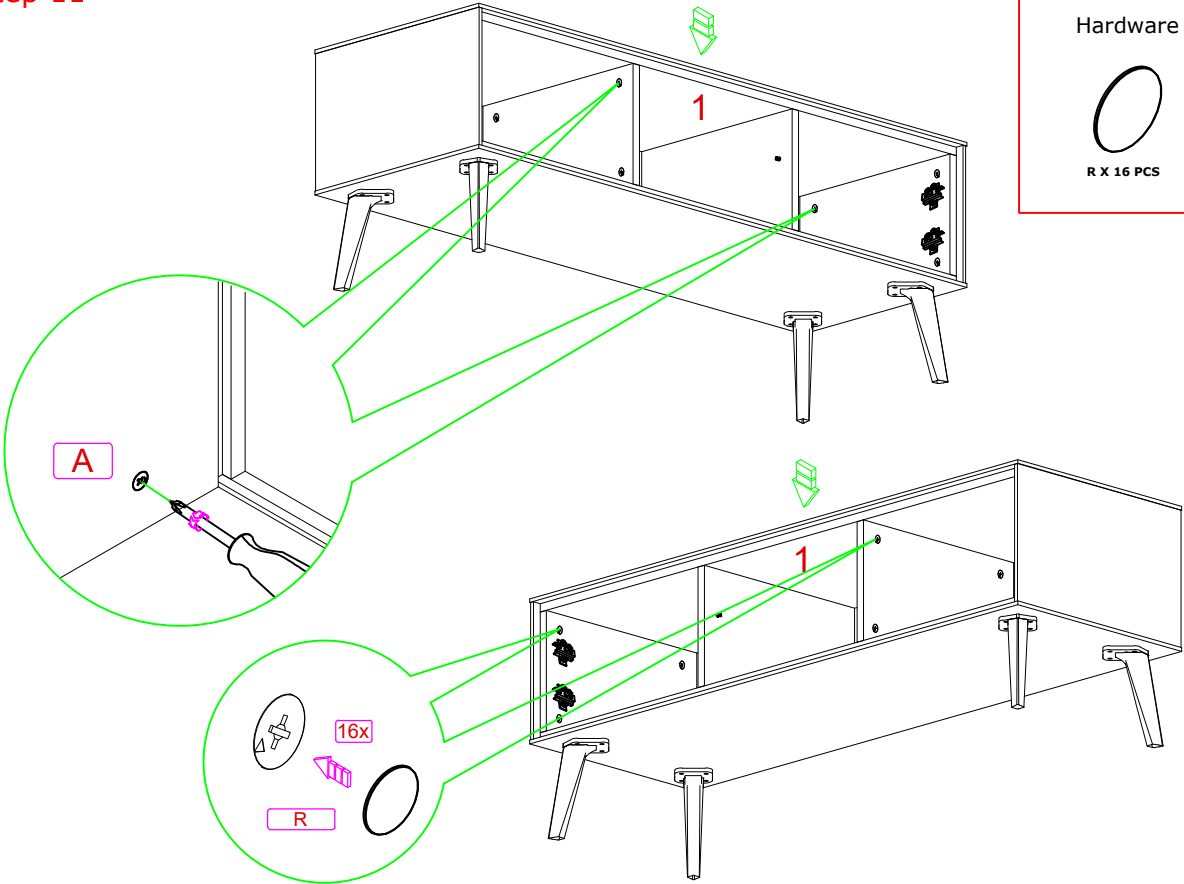


Hardware




P X 1 PCS

Step 11

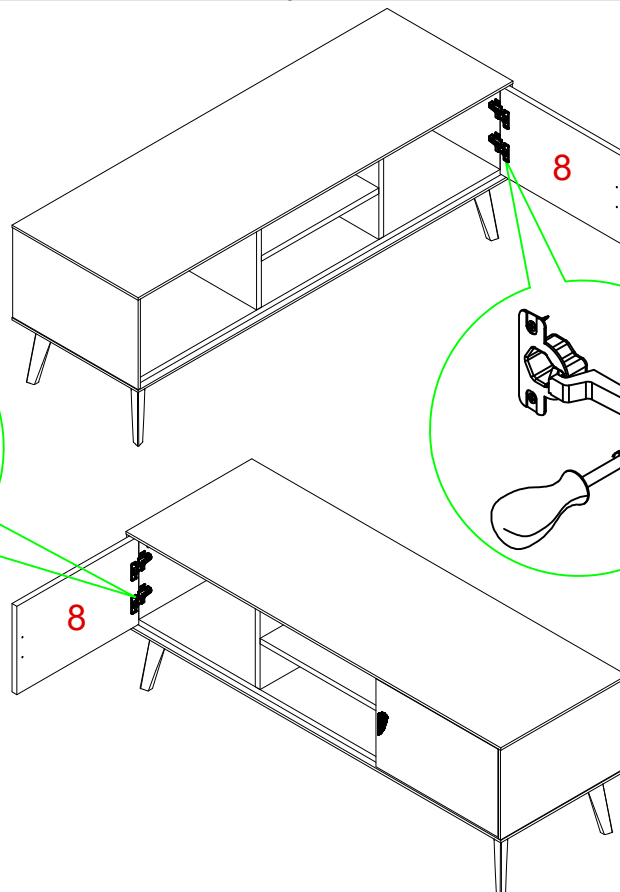
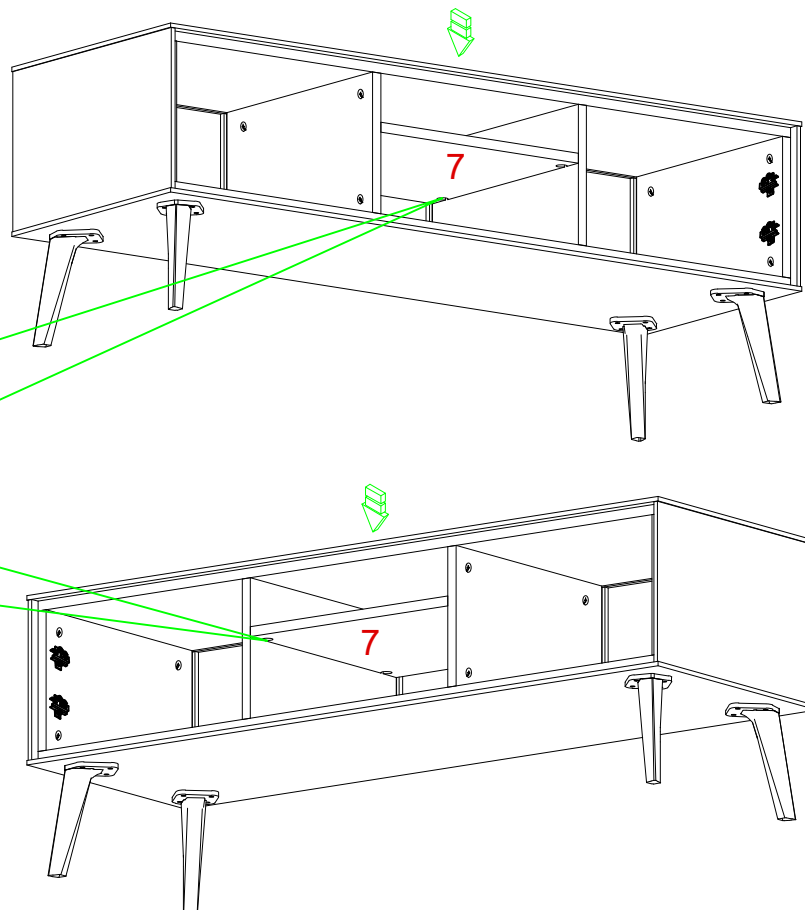


Hardware



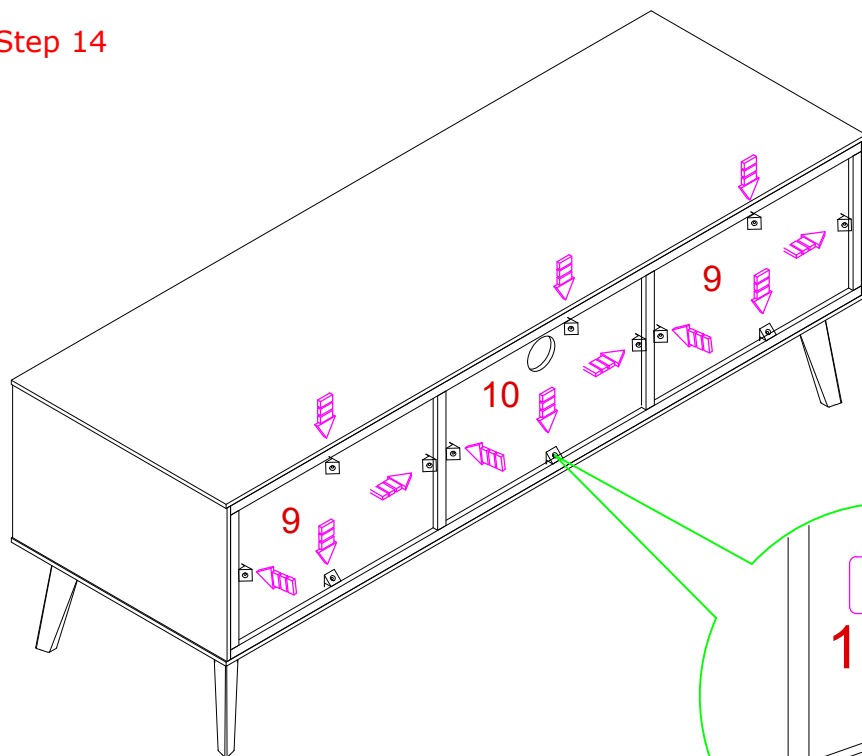
R X 16 PCS

A diagram showing a screwdriver being used to remove the top screw from the hinge. The screwdriver is inserted into the screw head, and curved arrows indicate a counter-clockwise rotation to loosen the screw.



K X 2 PCS

Step 14



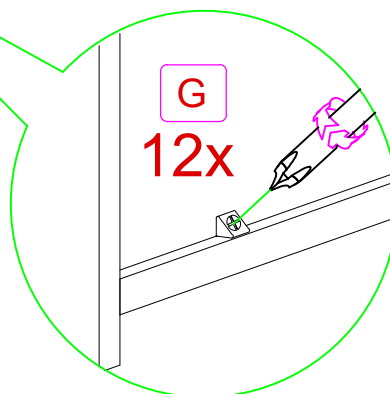
Hardware



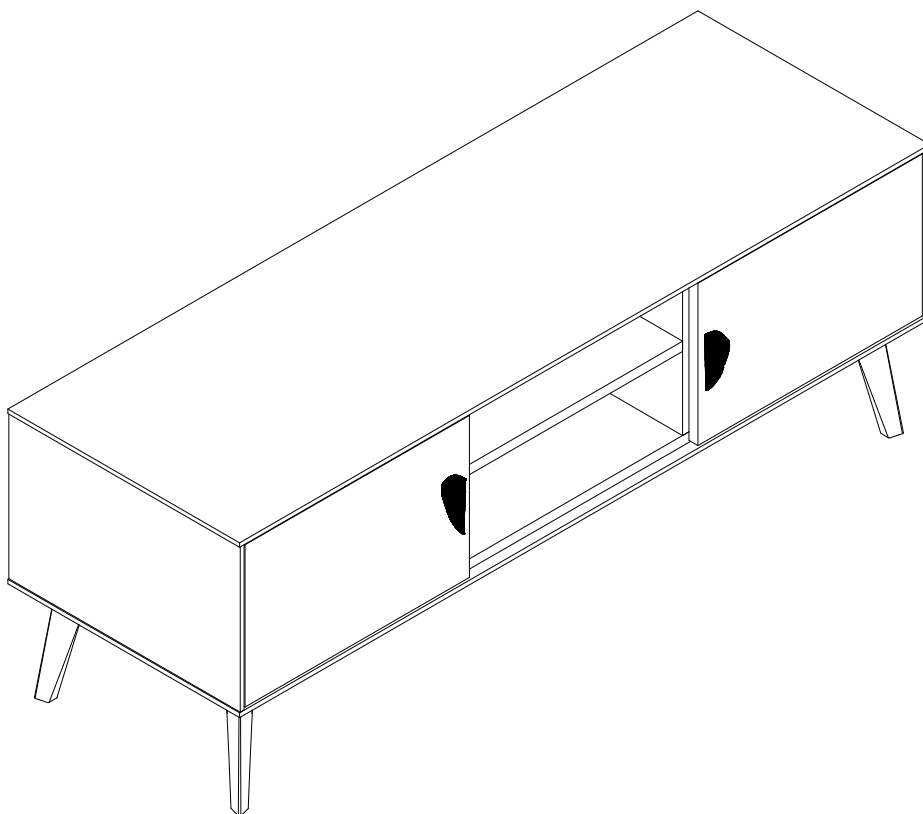
GX 12 PCS



F X 12 PCS



Step 15





WARRANTY POLICY

All Manhattan Comfort furniture products are warranted, to the original purchaser at the time of purchase and for a period of 30 days thereafter.

Our warranty is limited to new products purchased in factory sealed cartons. This warranty is valid in the United States of America and Canada.

In order to provide you with timely assistance, please thoroughly inspect your furniture for missing or defective parts immediately after opening the carton.

Manhattan Comfort offers a 30-day parts replacement warranty on all items.

Our furniture products are not intended for outdoor use.

THE WARRANTY DOES NOT COVER:

- Defects/damages by improper assembly or disassembly.
- Defects/damages caused by shipping. Claims for damage during transit should be placed immediately to the transportation company.
- Defects/damages caused by inappropriate use of the furniture.



319 Ridge Rd. Dayton, NJ 08810
908-888-0818