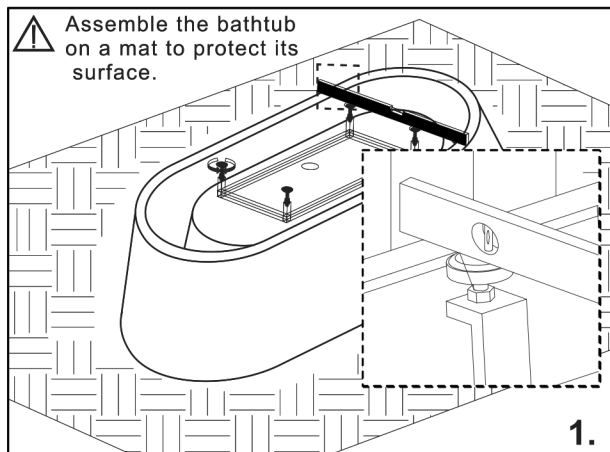
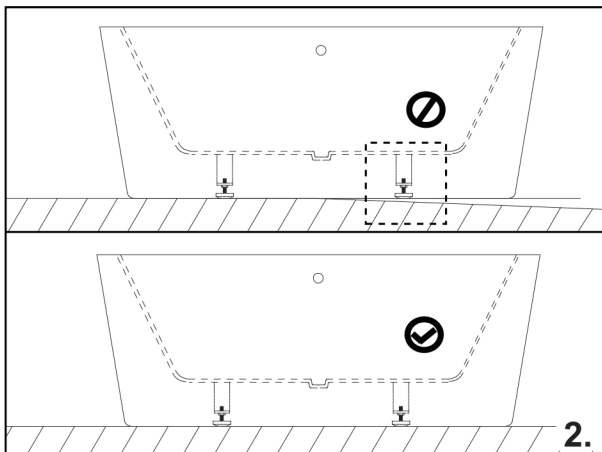


# ACRYLIC BATHTUB INSTALLATION

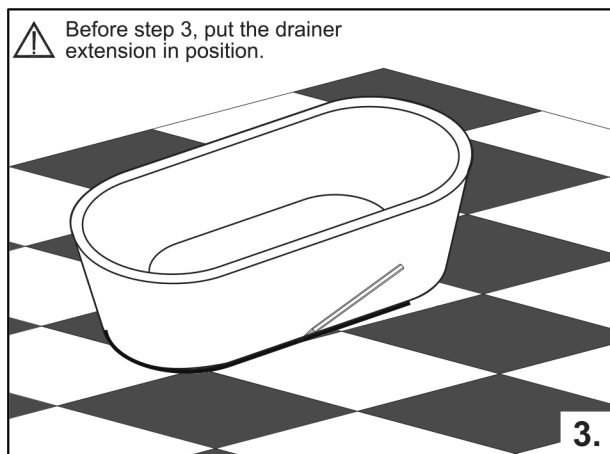
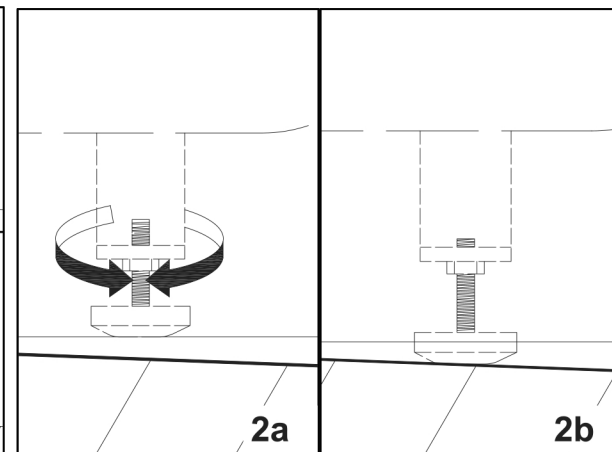
*Swiss Madison®*



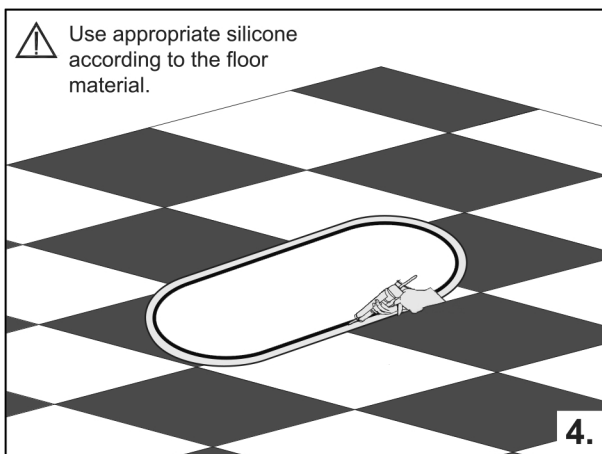
- Ensure its legs are adjusted in line with its base.



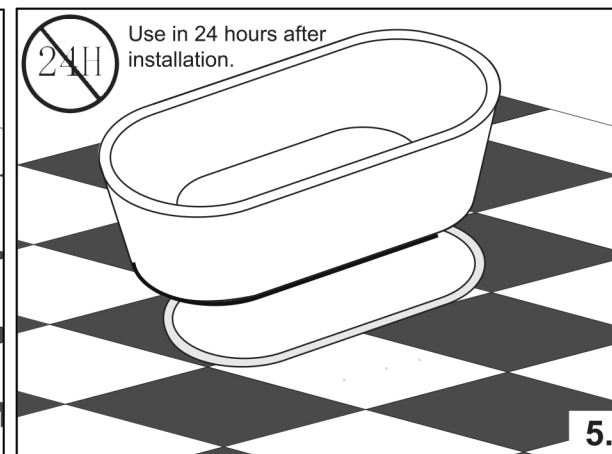
- Check to ensure the bathtub sits flatly. Adjust its legs if required.



- Trace the outline of its base with a pencil.



- Apply silicone within the outline traced.

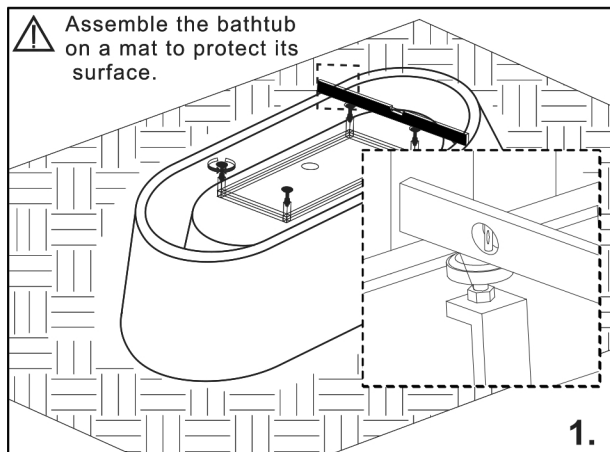


- Set the bathtub in final position.

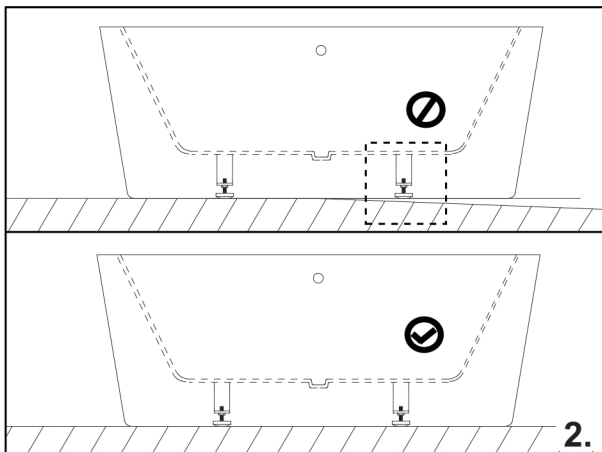
 The guide doesn't include how to install the drainer extension, which should be installed by a qualified plumber.

# ACRYLIC BATHTUB INSTALLATION

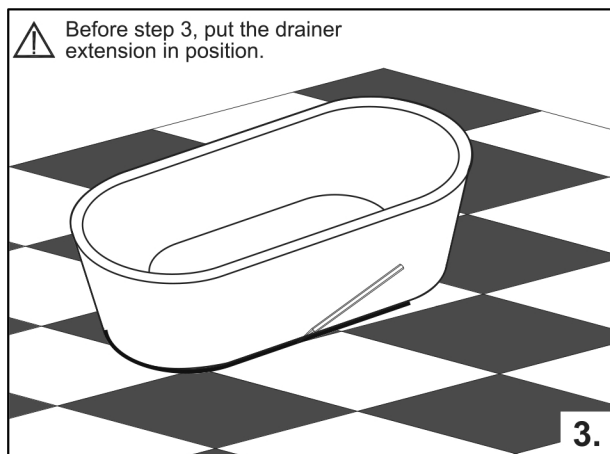
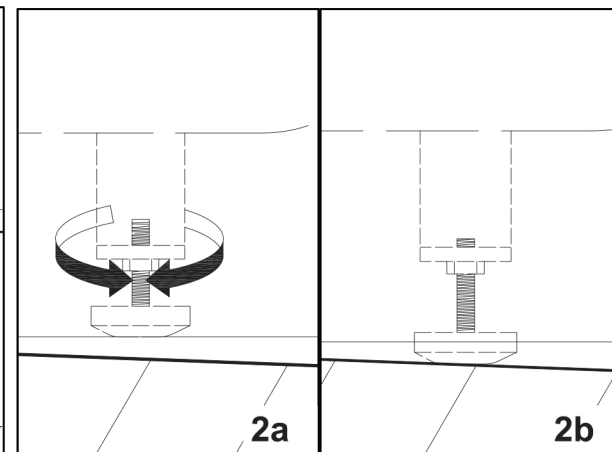
Swiss Madison®



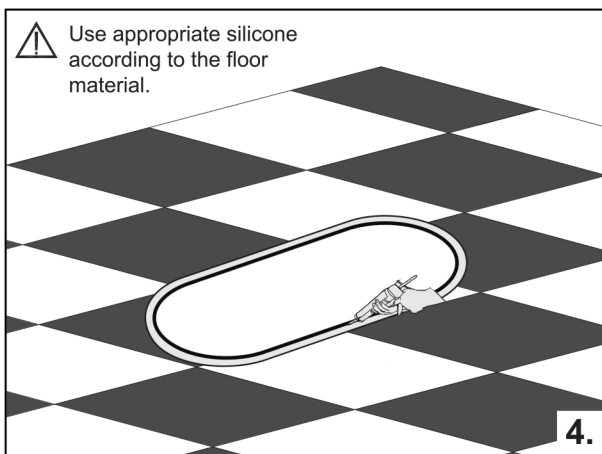
- Ensure its legs are adjusted in line with its base.



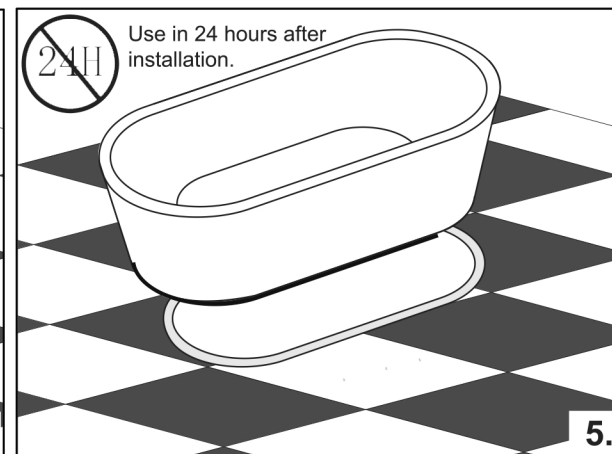
- Check to ensure the bathtub sits flatly. Adjust its legs if required.



- Trace the outline of its base with a pencil.



- Apply silicone within the outline traced.



- Set the bathtub in final position.

 The guide doesn't include how to install the drainer extension, which should be installed by a qualified plumber.