

INSTALLATION GUIDE

Belvedere Bath®

www.belvederebath.com

Model No.:LUX-9048

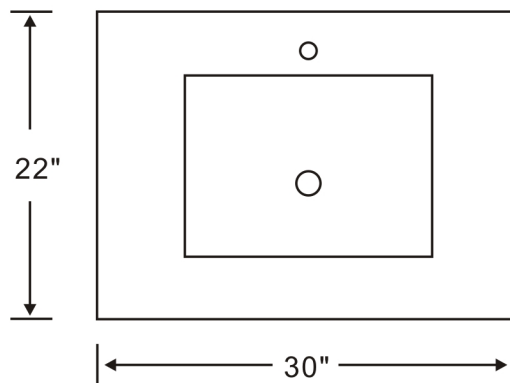
Cabinet Size:30"W x 22"D x 34"H

Notes:

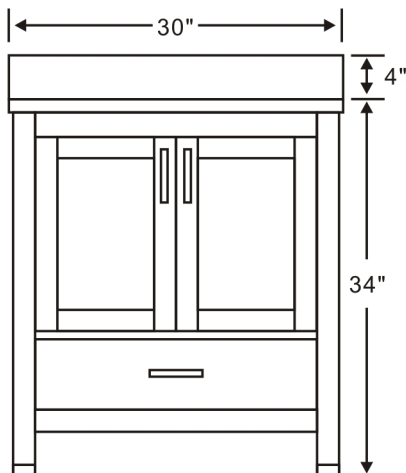
- Please turn off water-lines and drain before installation of vanity
- Drain, pipe and trap are not included
- Loosen the knobs inside drawers then install them correctly in the front

Packing list

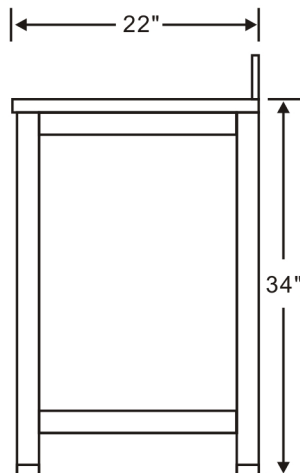
- Main cabinet
- Countertop and backsplash
- Sink
- Instruction manual



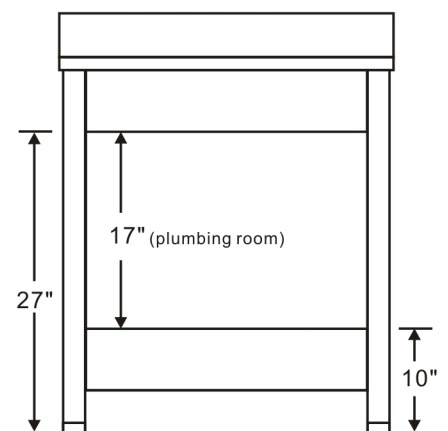
Top vertical view



Front View



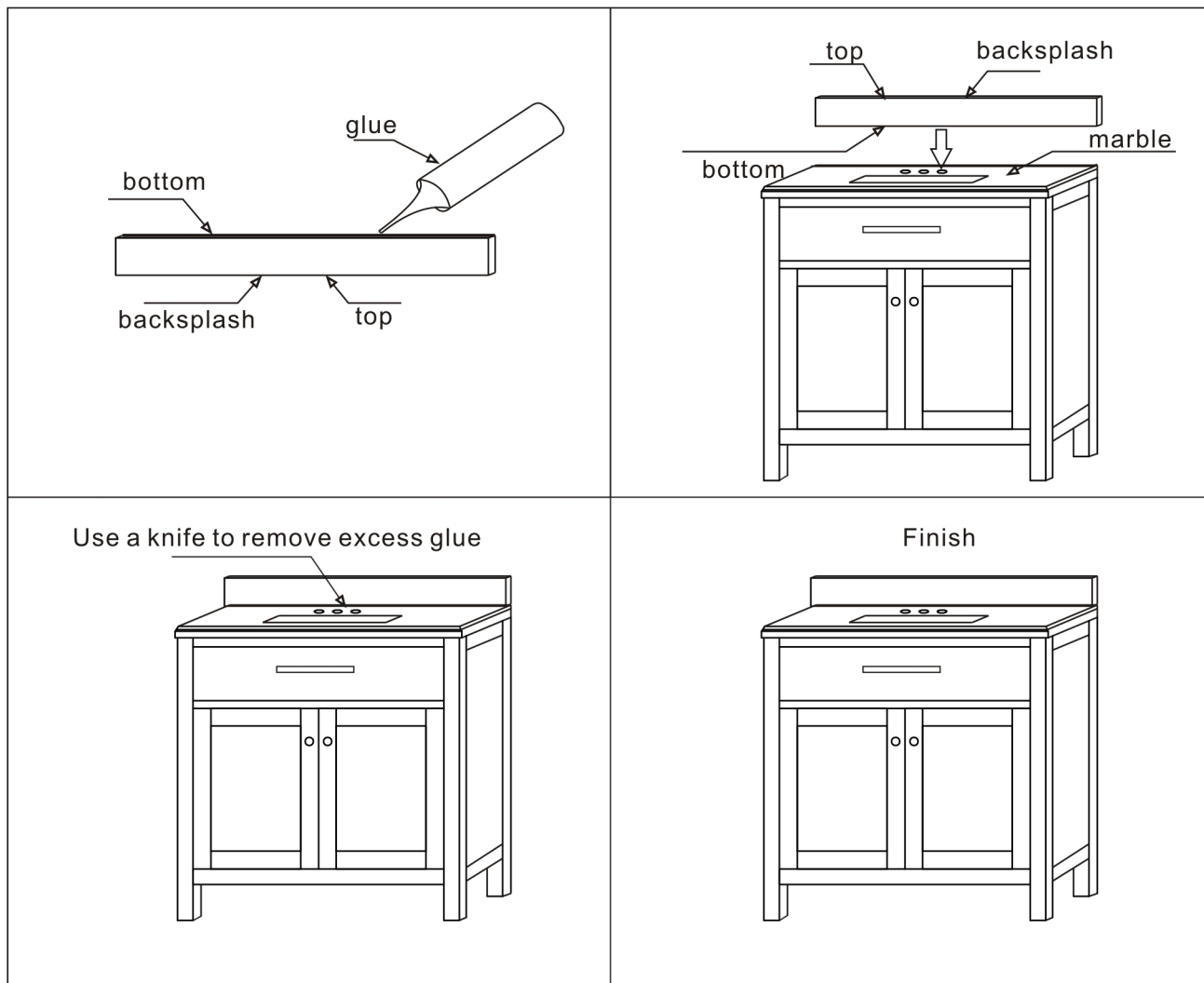
Side View



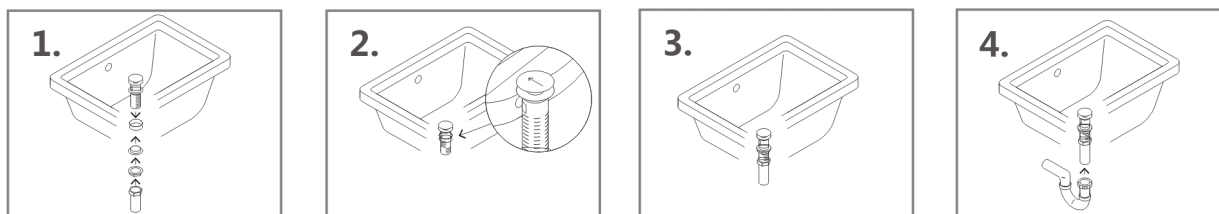
Back View

INSTALLATION GUIDE

- Stick the backsplash on the countertop using a transparent silicone and let dry



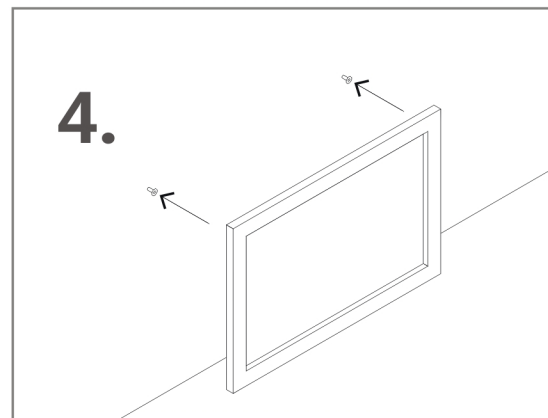
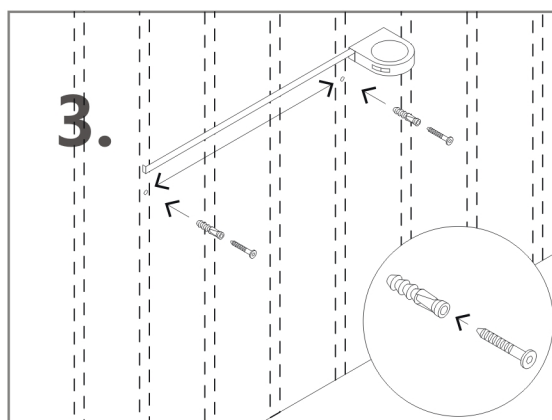
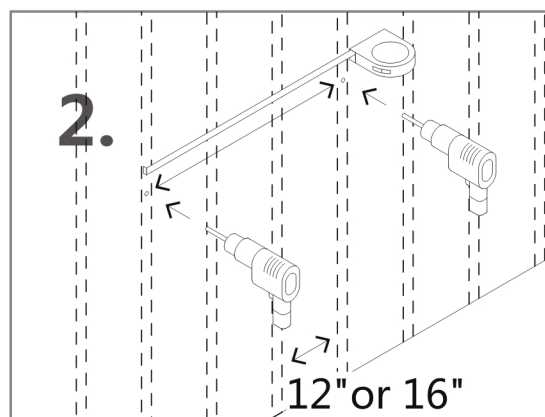
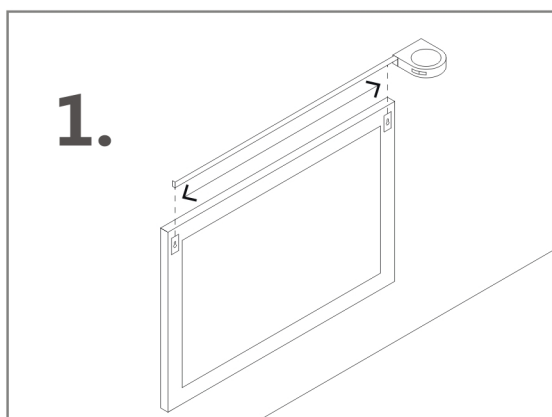
Installing the drain



INSTALLATION GUIDE

- After installing the backsplash on the cabinet, put the drain assembly inside the hole in the sink and fix it firmly.
- Tie up the mounting rubbers and metal rings from the bottom of the drain.
- Connect the trap onto the drain bottom.

Hanging Mirror On The Wall



- Measure the distance between the screw holes from the back of the mirror.
- Locate the studs on the wall. They are normally placed 12" to 16" apart from each other. Drill two holes on the studs as per your previous measurement.
- Insert the plastic plugs into the drilled holes and then insert screws into the plastic plugs. Tie up the screws till they remain at least 0.5" – 0.75" outside the wall.
- Hang the mirror on to the wall