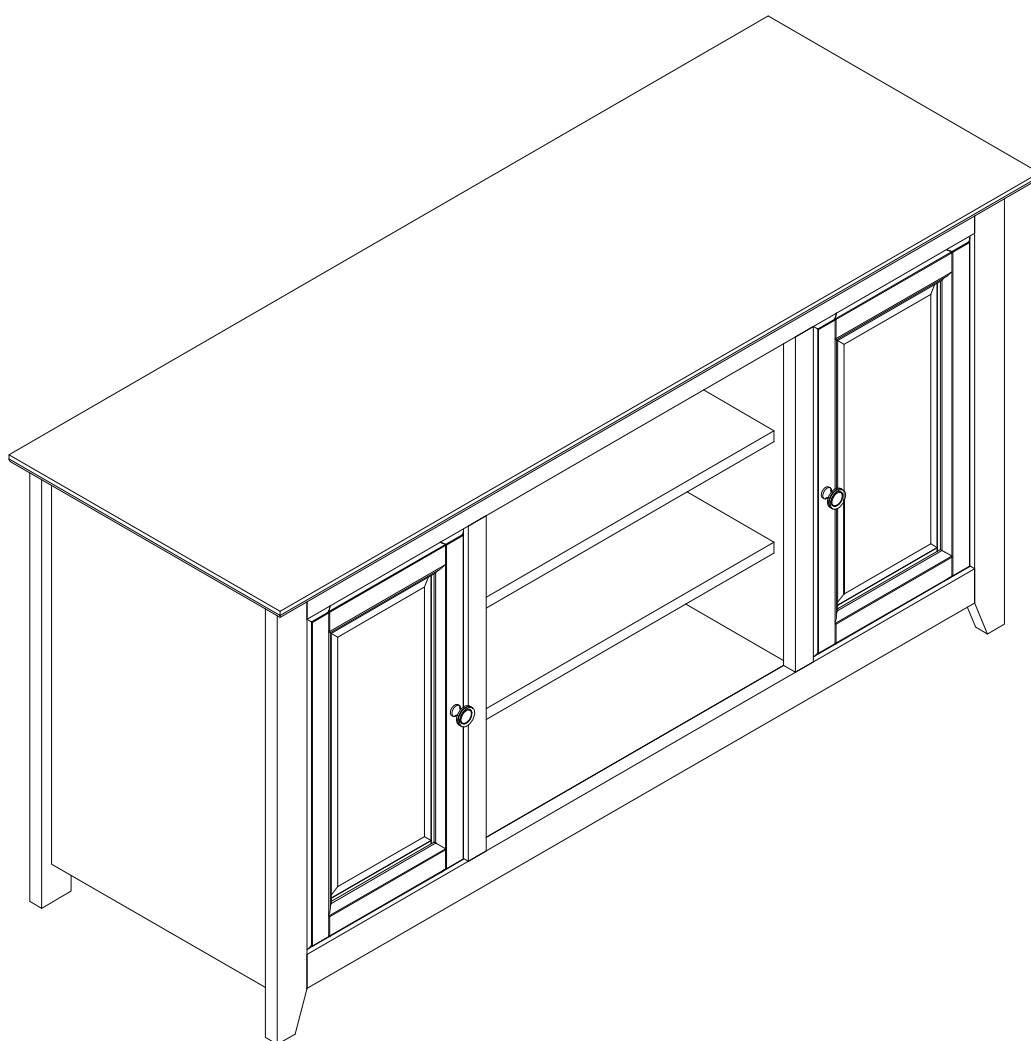
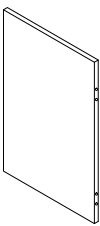
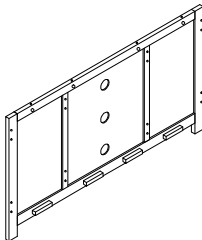
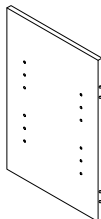
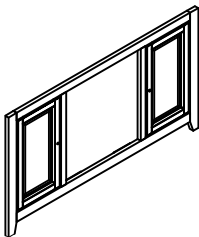
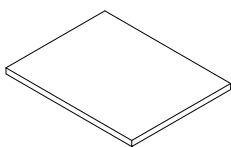
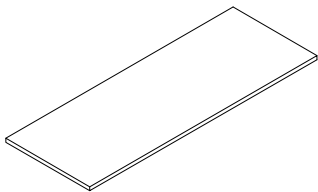
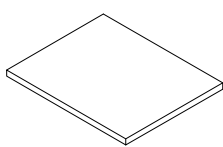
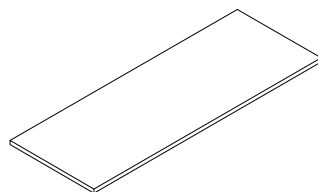
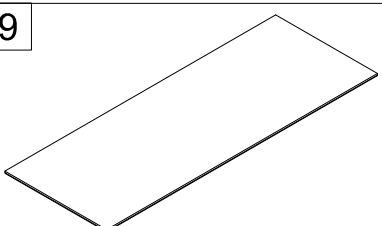


TV CONSOLE


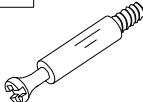
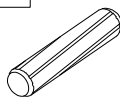
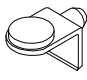


MODEL# BITV001BN/OK



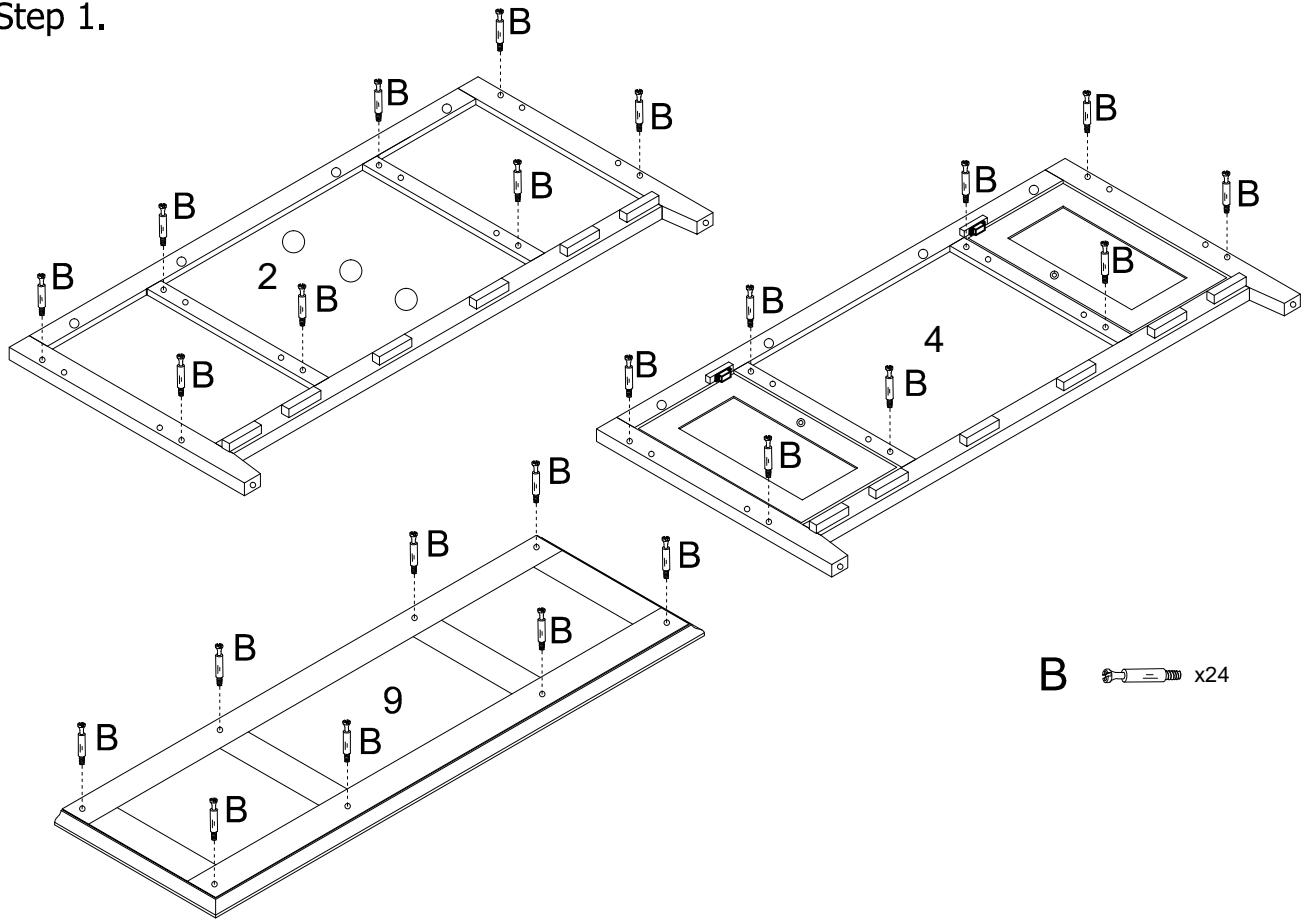
Parts List

1		2		3	
L/R Side Panel(2PCS)		Back Frame(1PC)		Left/Right partition panel(2PCS)	
4		5		6	
Front Frame(1PC)		L/R Bottom Shelf(2PCS)		Center Bottom Panel & Upper Center Shelf 2PCS	
7		8		9	
L/R Shelf 2PCS		Shelf(Center) 1PCS		Top panel(1PC)	

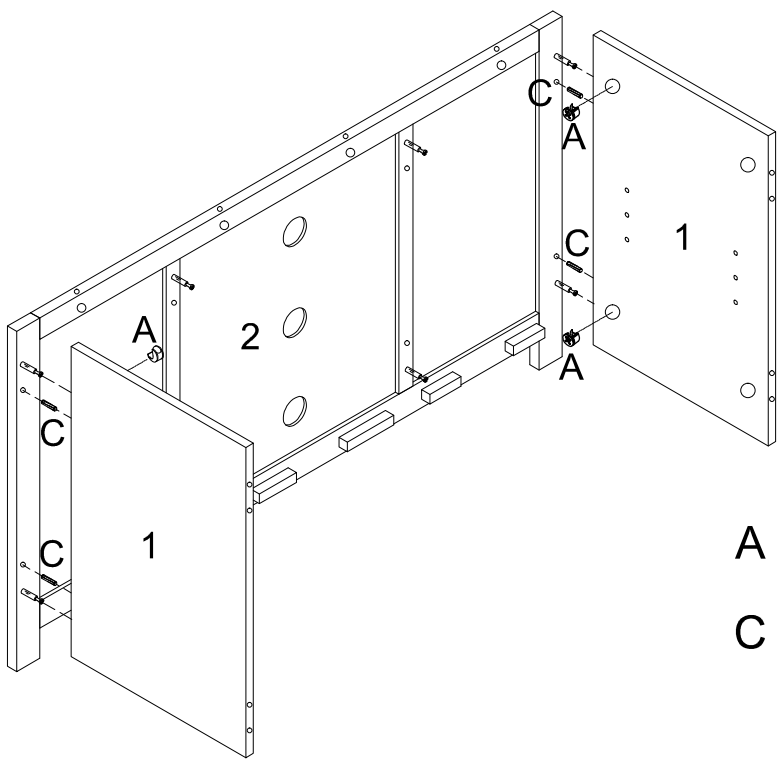
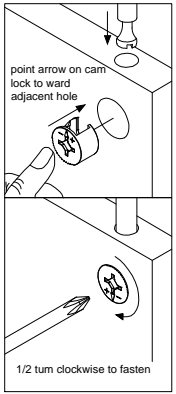
Hardware List

A	B	C	D	E	F
					
CAM LOCK Φ15*12mm 24 PCS	CAM BOLT Φ6*36mm 24 PCS	WOOD DOWEL Φ8*30mm 16 PCS	Shelf Support Ø6.5mm 16 PCS	Knob Ø31*25mm 2 PCS	Thread Count:24 Screw Ø5/32"*19mm 2 PCS

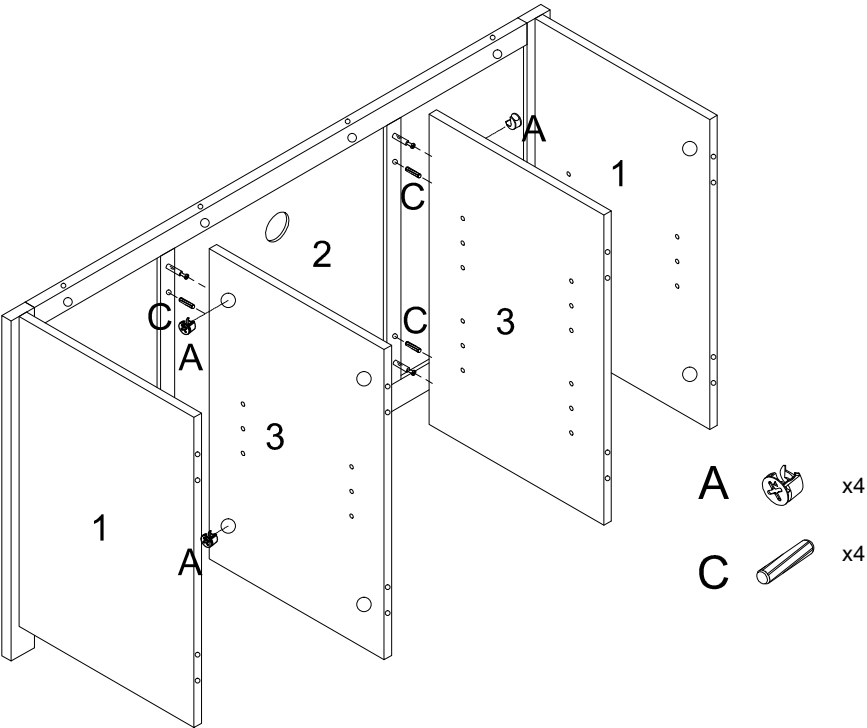
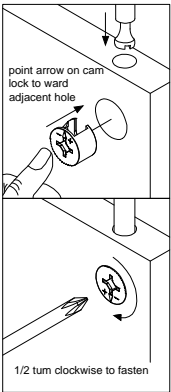
Step 1.



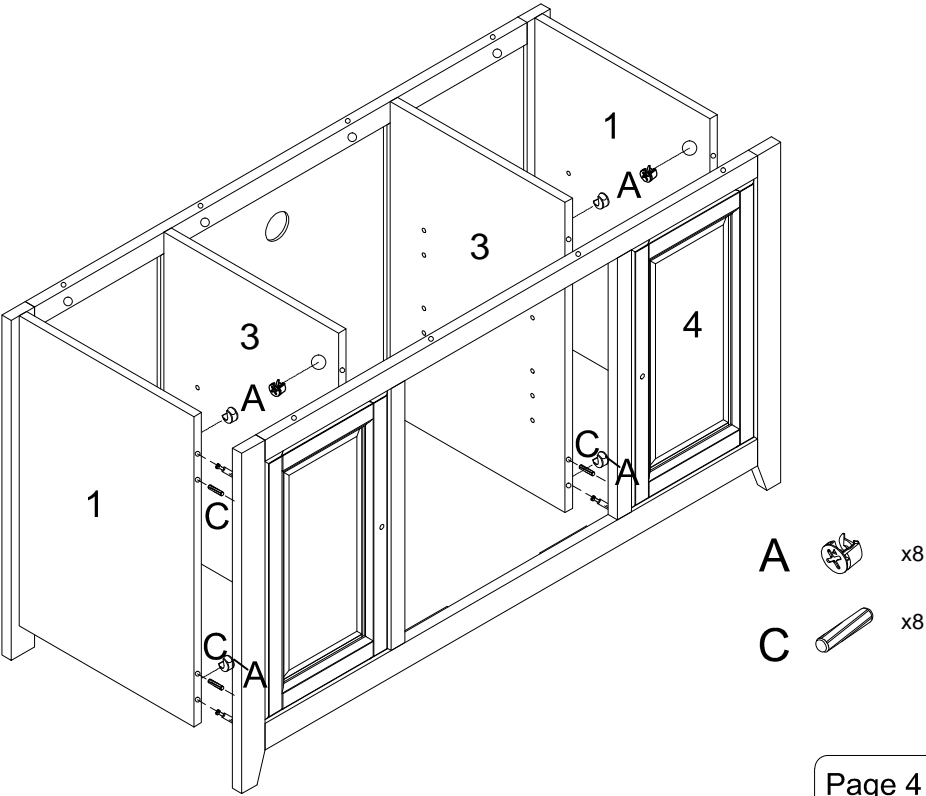
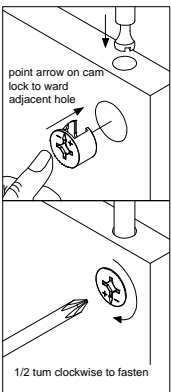
Step 2.



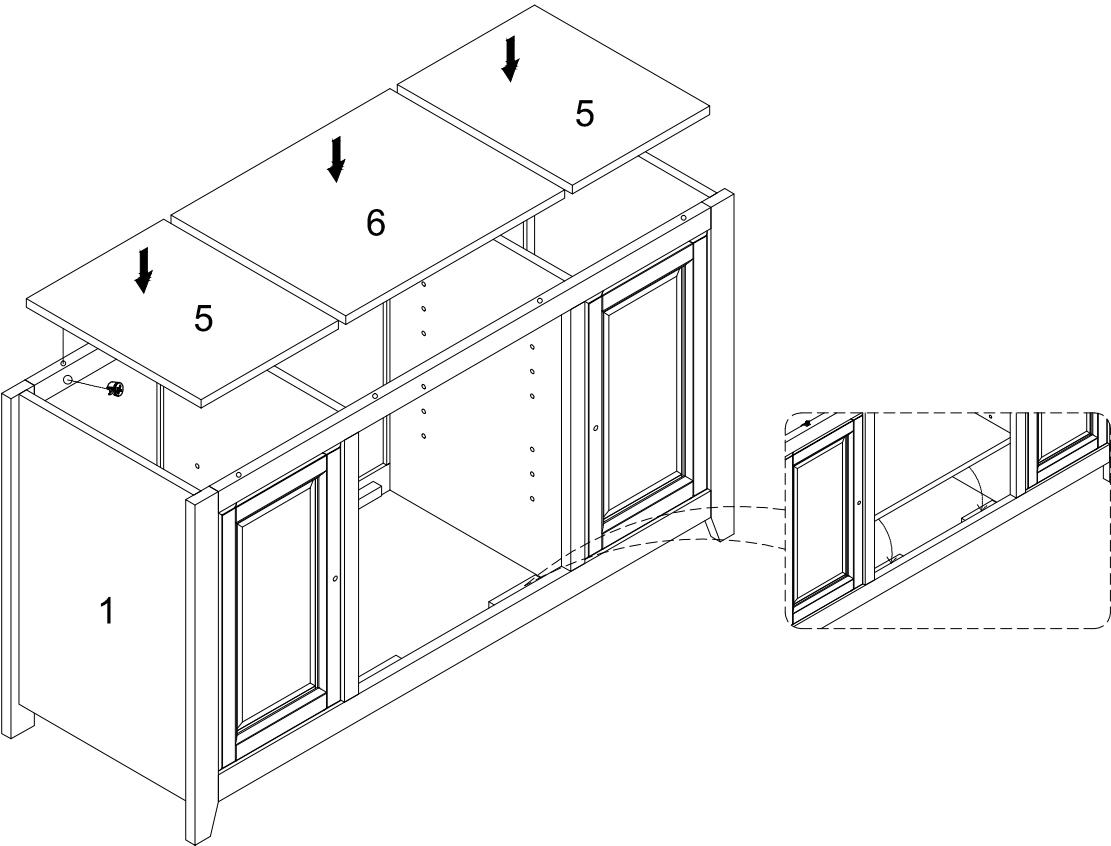
Step 3.



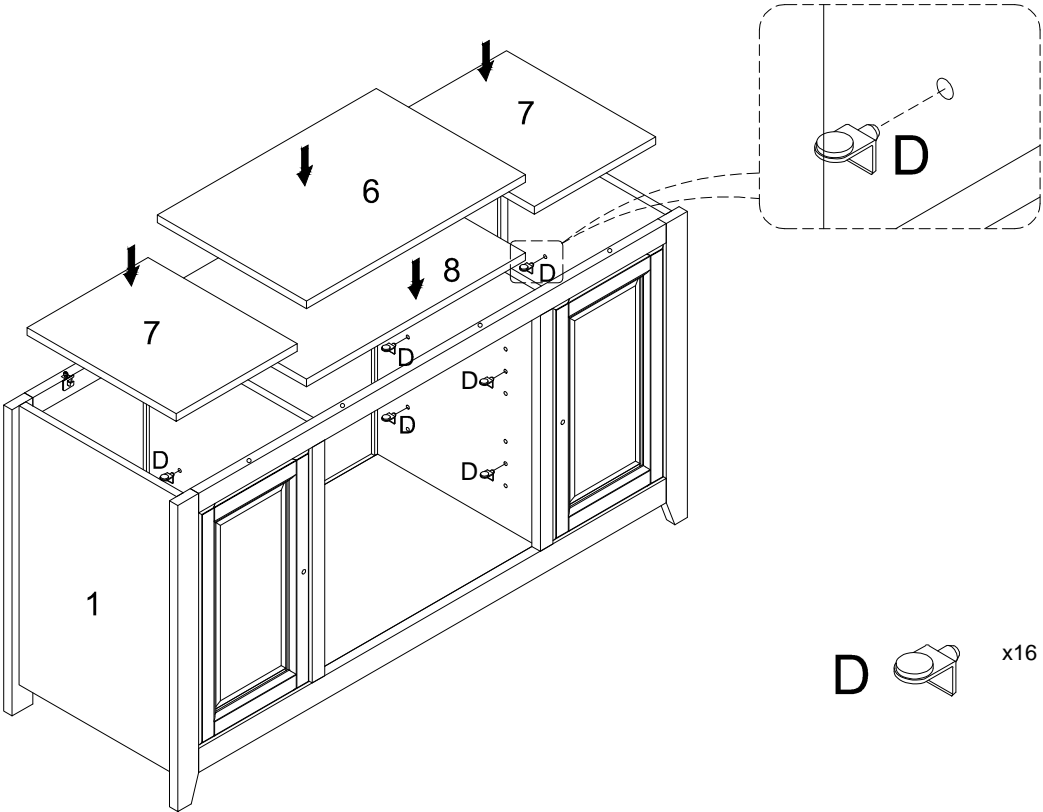
Step 4.



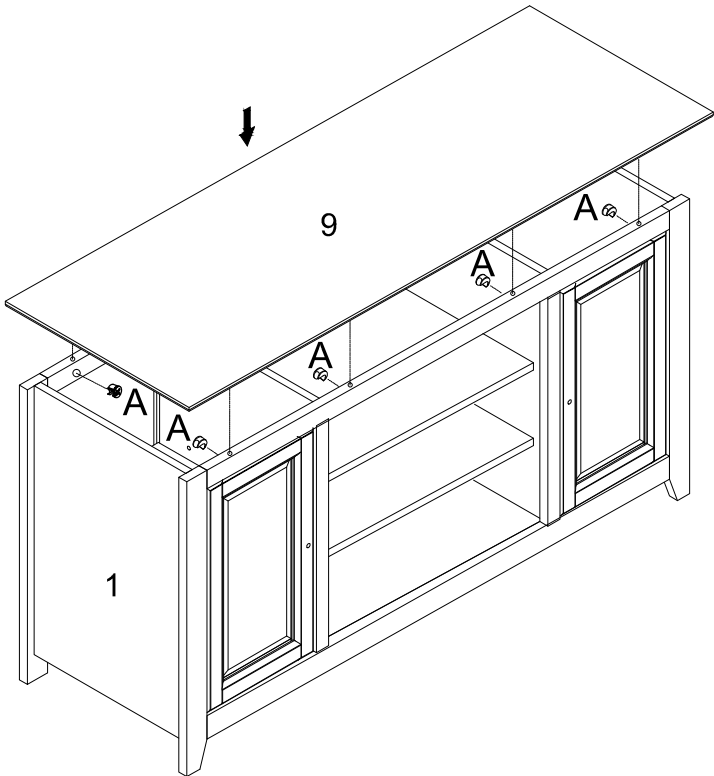
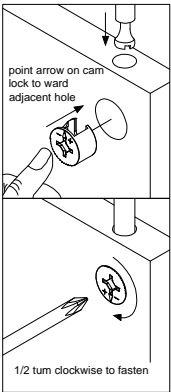
Step 5.



Step 6.

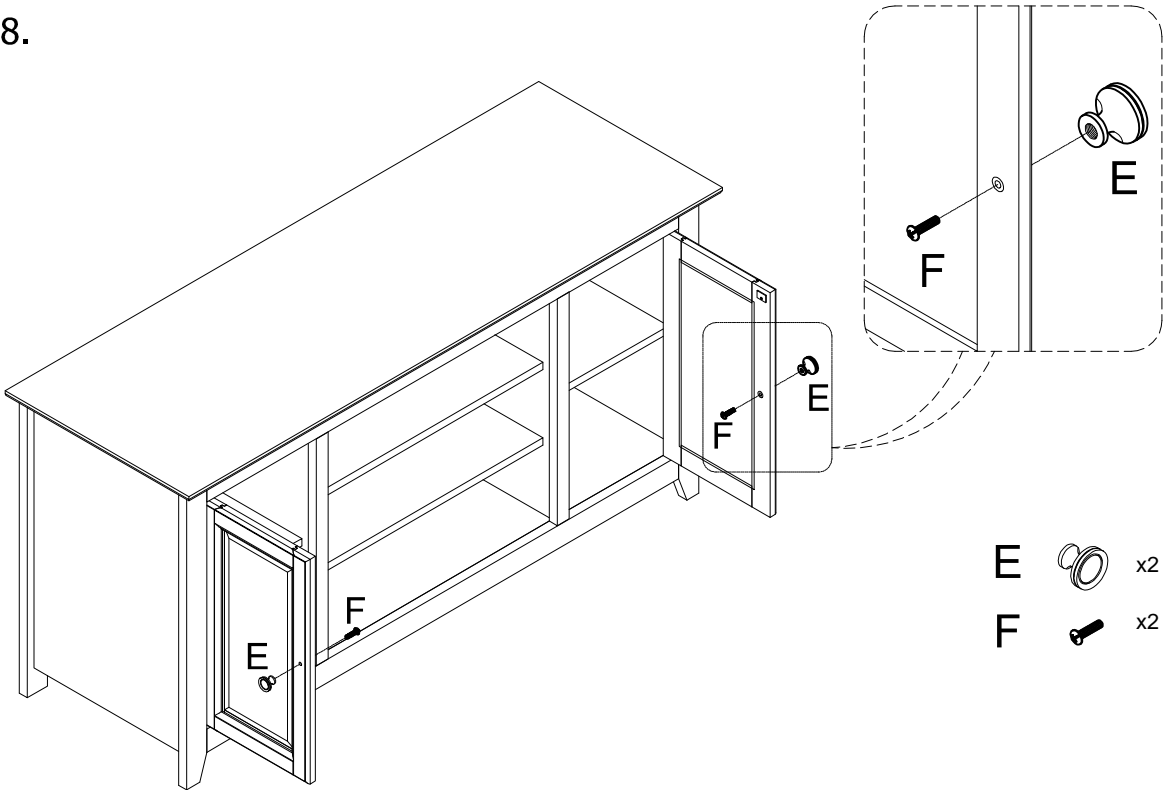


Step 7.



A  x8

Step 8.



E  x2
F  x2

Bestsign International Inc.

900 Canada Ct, City of Industry, CA 91748
Tel: (626) 330-2975 Fax: (626) 330-2829

Furniture Care & Cleaning Instructions

- Do not expose the furniture to strong sunlight, which causes discoloration and shorten the product lifetime.
- Do not expose the furniture to extreme heat, cold, or humidity, which may cause wood to swell or warp.
- Do not leave the furniture wet with beads of water standing on the furniture.
- Wipe spills with a clean dry cloth. Do not use chemicals or abrasives for cleaning!
- **TAKE NOTE: THE BOLTS MAY SLIGHTLY LOOSEN OVER TIME. IF YOUR FURNITURE FEELS "WOBBLY" OR LOOSE, PLEASE RE-TIGHTEN BOLTS.**

Wood Furniture Care & Cleaning Instructions

To maintain the quality of your wood furniture, do not expose it to direct sunlight or excessive temperatures; extreme changes in humidity can cause warping. Always use coasters, pads, cloth or felt to protect the furniture surface. Use protective mats under hot dishes. Use a protective pad when writing with a pen. Lift objects rather than dragging them over the furniture surface. Blot spills immediately with a clean cloth. Dust often using a soft, clean, lint-free cloth. Avoid harsh fabrics, paper towels or disposable dusting towels as they may scratch the surface. Use a non-silicone and non-wax polish; do not use soap, water or wax.

FURNITURE WARRANTIES

One-year warranty on all of our wood furniture from date of delivery against manufacturer defects and structural failure under normal use and conditions; One-year warranty from date of delivery against damage of parts. Parts will be replaced, repaired or refinished in the original color and style, if available; a similar color and style will be offered if the original has been discontinued.

IMPORTANT LIMITATIONS

Please note that our warranties do not cover failure due to any repairs or modifications to the product after purchase, accidental damage, abuse, misuse, commercial use, or normal wear and tear, including: fading, scratched or chipped finishes, weathering under normal weather conditions, staining or discoloration. The term "lifetime" as used in this statement of warranties shall mean a period of no longer than 30 days from the date of delivery of any item covered by a one-year warranty. The limited warranties described above are extended to the original purchaser of the product only.