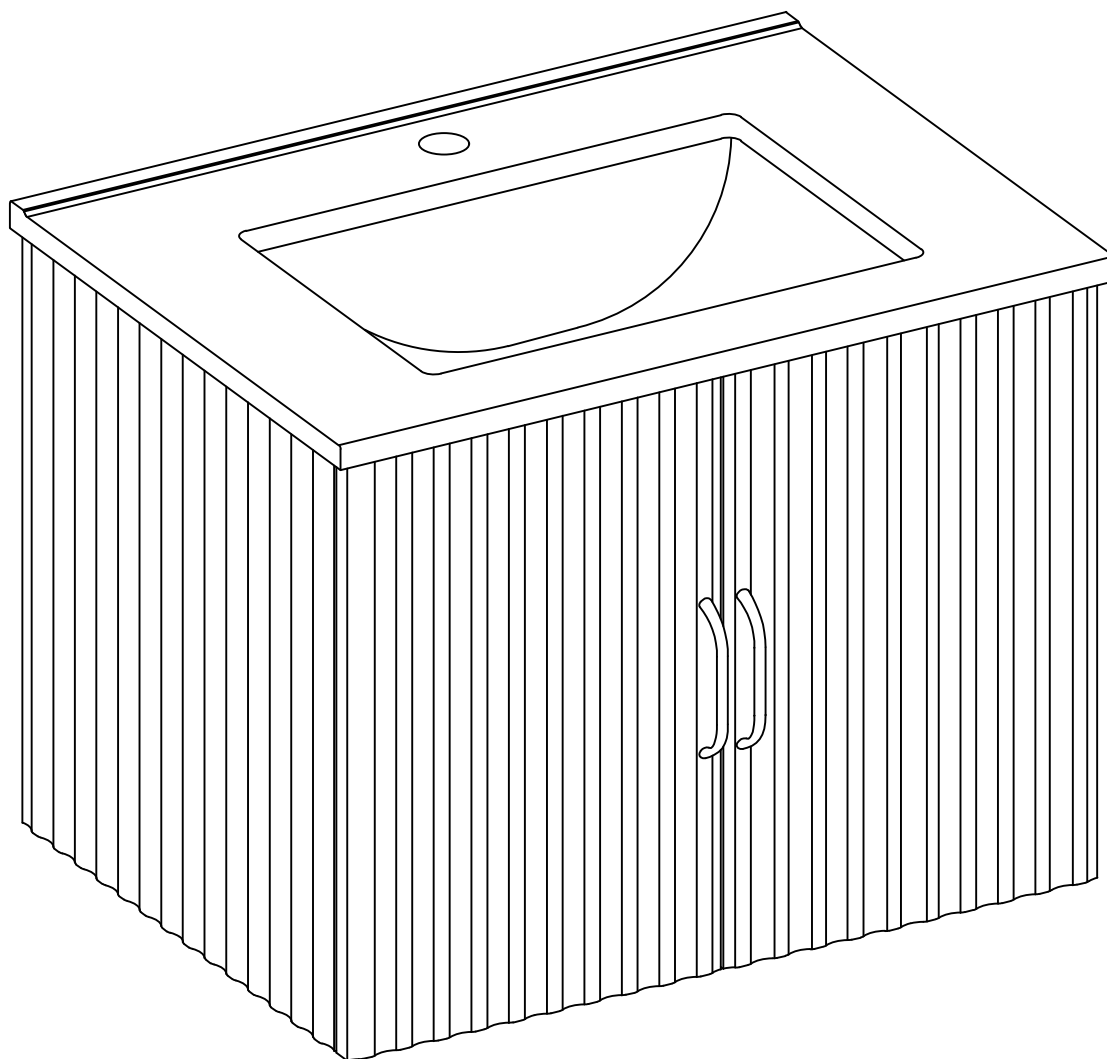
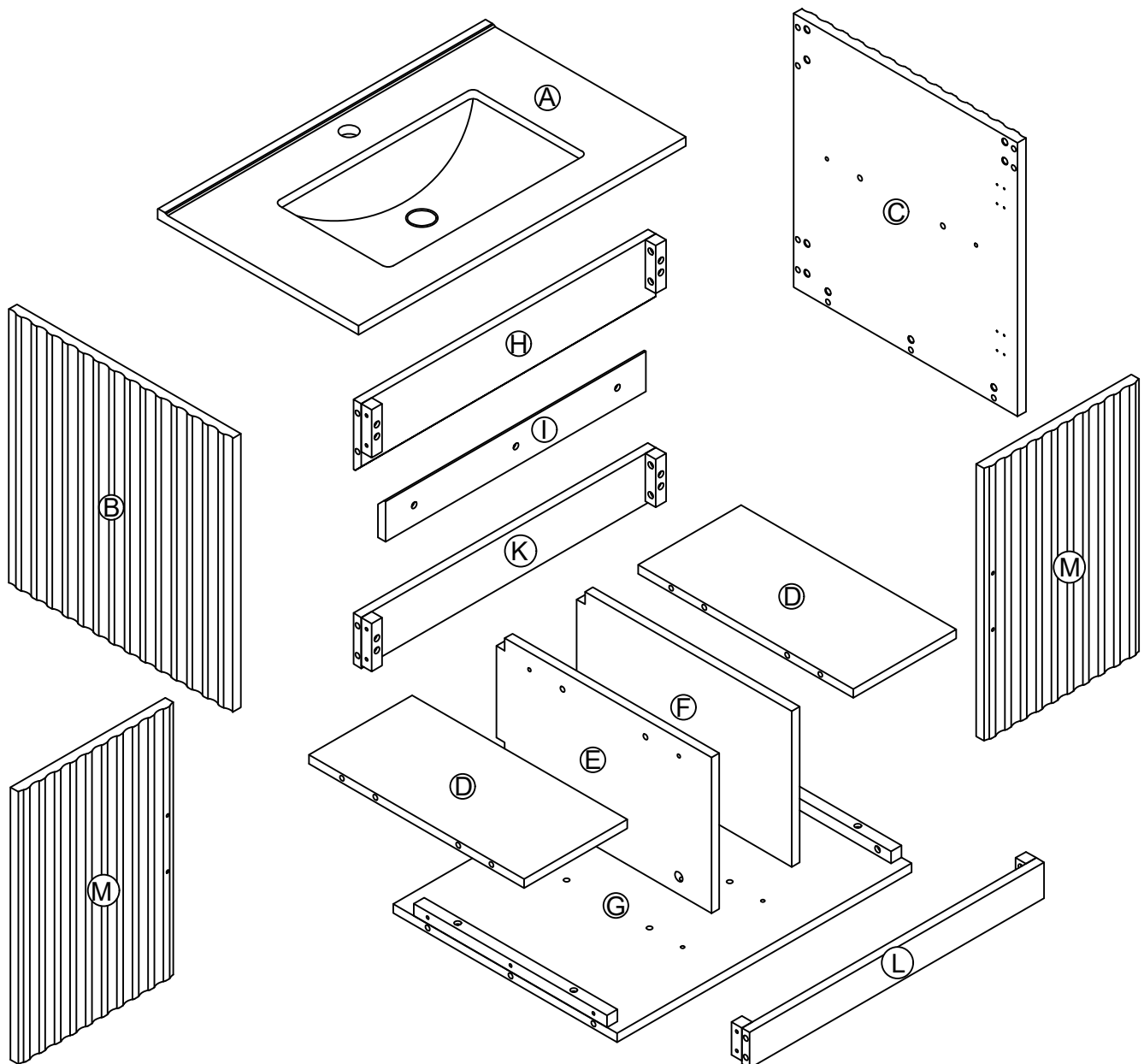


Singer Bathroom Vanity

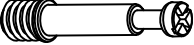

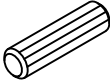





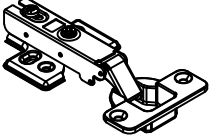
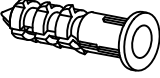
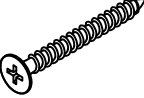
CXY2333



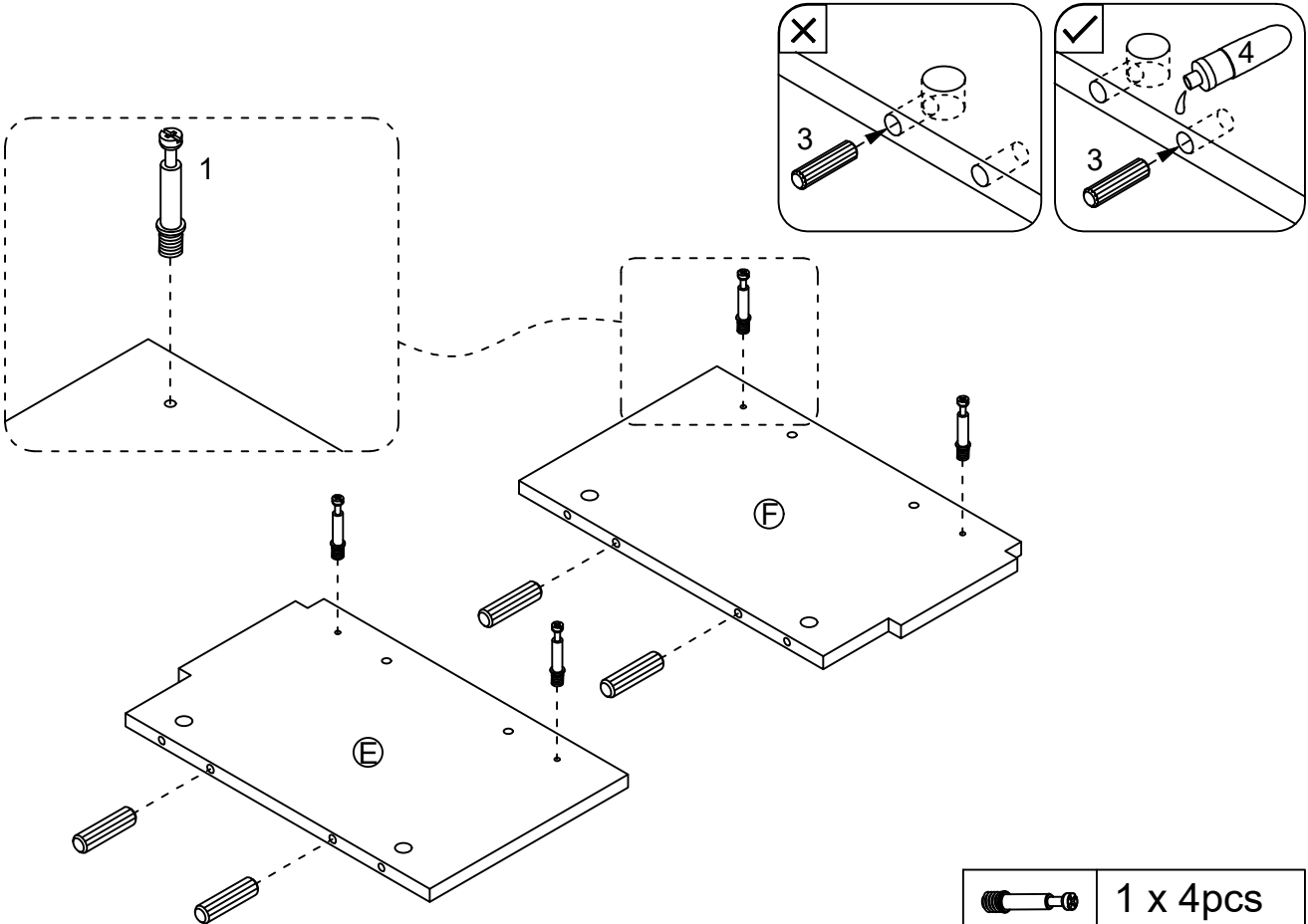
PACKAGE CONTENTS



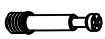
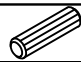

PART	DESCRIPTION	QTY		PART	DESCRIPTION	QTY
A	Sink	X1		G	Base	X1
B	Left Side Board	X1		H	Back Upper Rail	X1
C	Right Side Board	X1		I	Wall Bracket	X1
D	Side Shelf	X2		K	Back Lower Rail	X1
E	Left Middle Wall	X1		L	Front Upper Rail	X1
F	Right Middle Wall	X1		M	Door	X2

1	2	3	4
			
Ø6*35mm 12PCS	Ø15*9mm 12PCS	Ø6*30mm 30PCS	1PCS
5	6	7	8
			
M6*25mm 18PCS	2PCS	5/32*18mm 4PCS	Ø3.5*12mm 24PCS
9	10	11	
			
4PCS	3PCS	Ø4*45mm 3PCS	

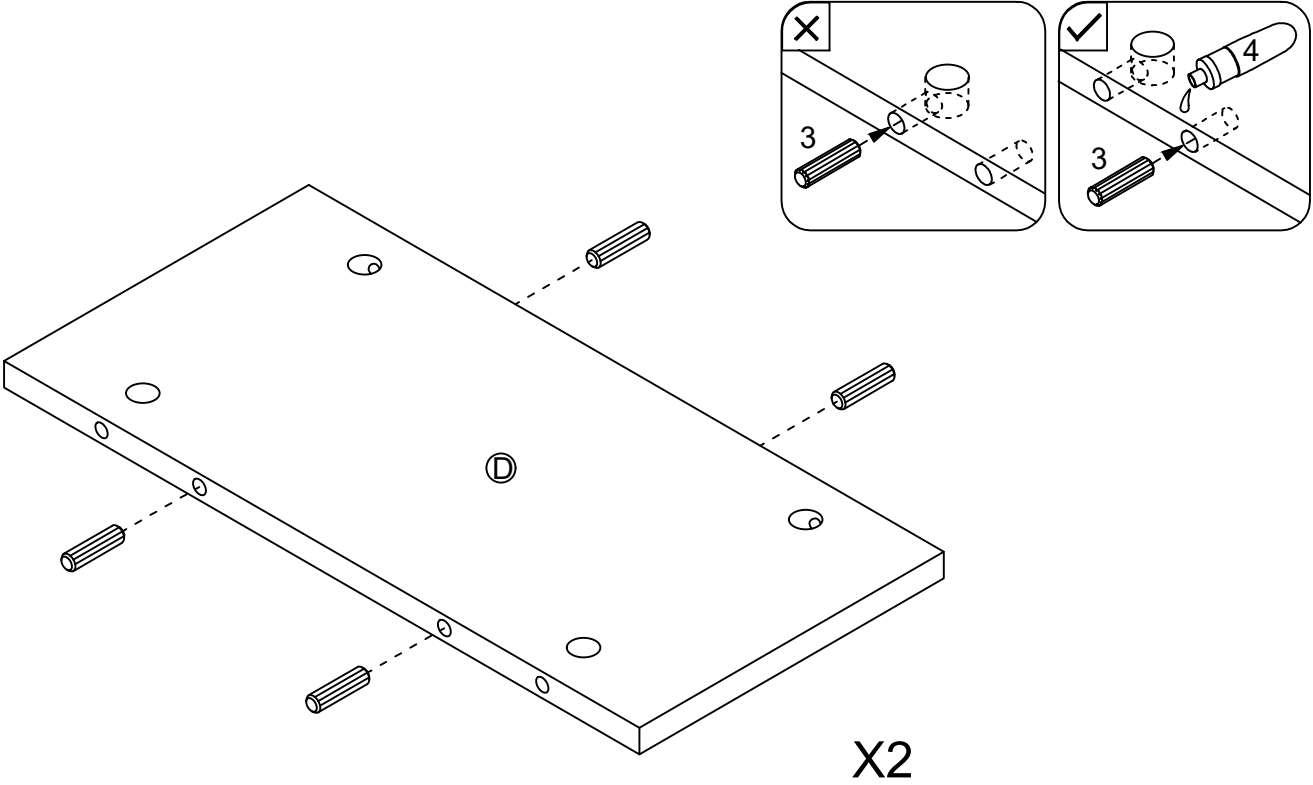
STEP1





Glue the wood dowels 3 into the inner holes on the front upper rail E and F .
NOTE: It is very important to use a small amount of glue 4 on ends of dowels and wipe away excess glue immediately.

	1 x 4pcs
	3 x 4pcs
	4 x 1pcs

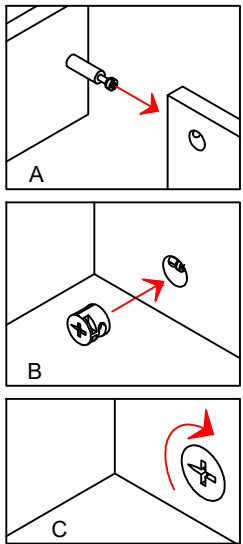
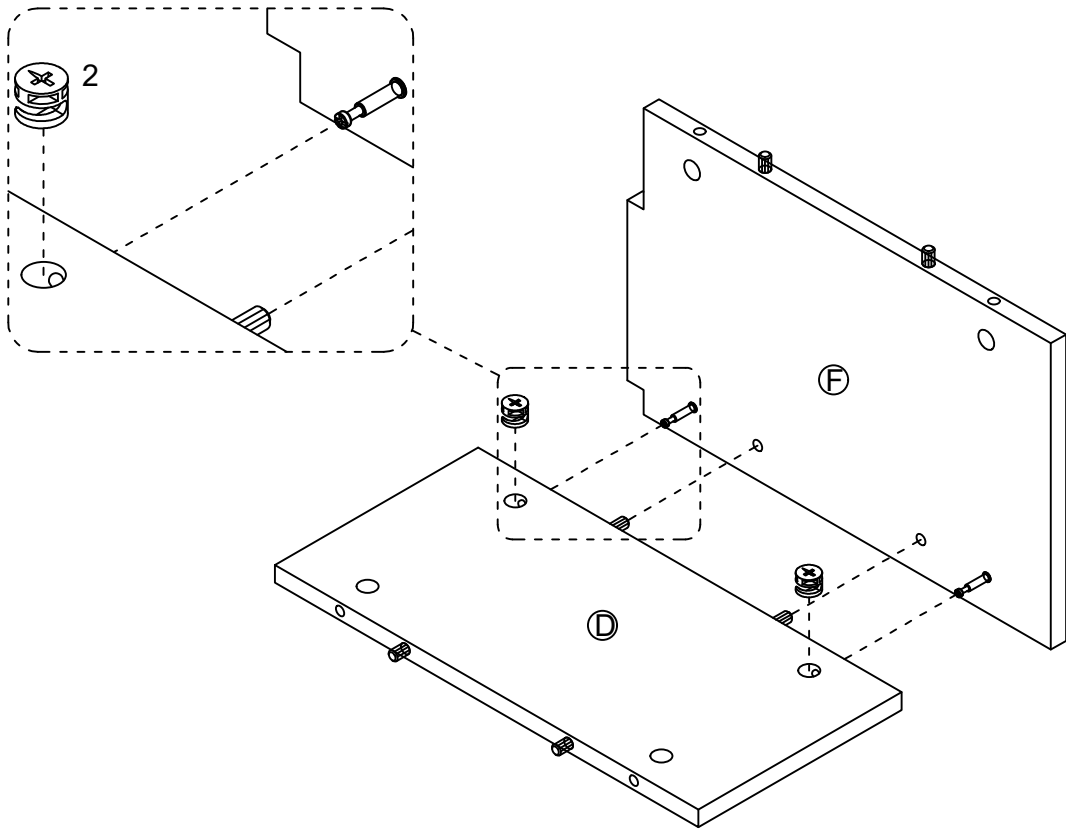
STEP2




Glue the wood dowels 3 into the inner holes on the side panels D.
NOTE: It is very important to use a small amount of glue 4 on ends of dowels and wipe away excess glue immediately.

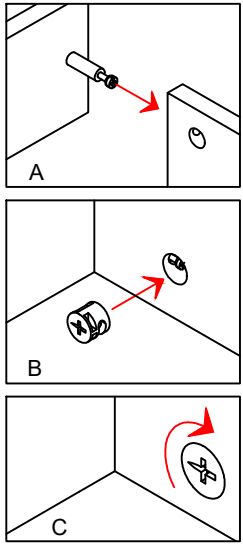
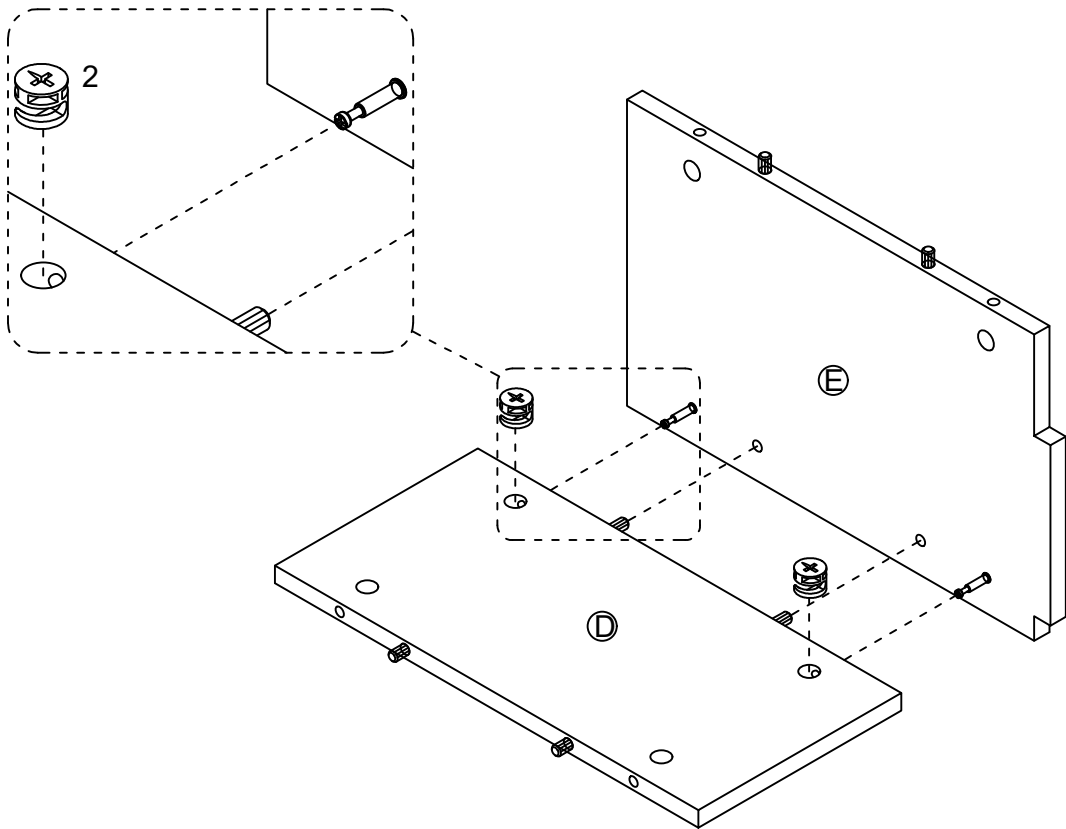
	3 x 8pcs
	4 x 1pcs


STEP3



 2 x 2pcs

STEP4

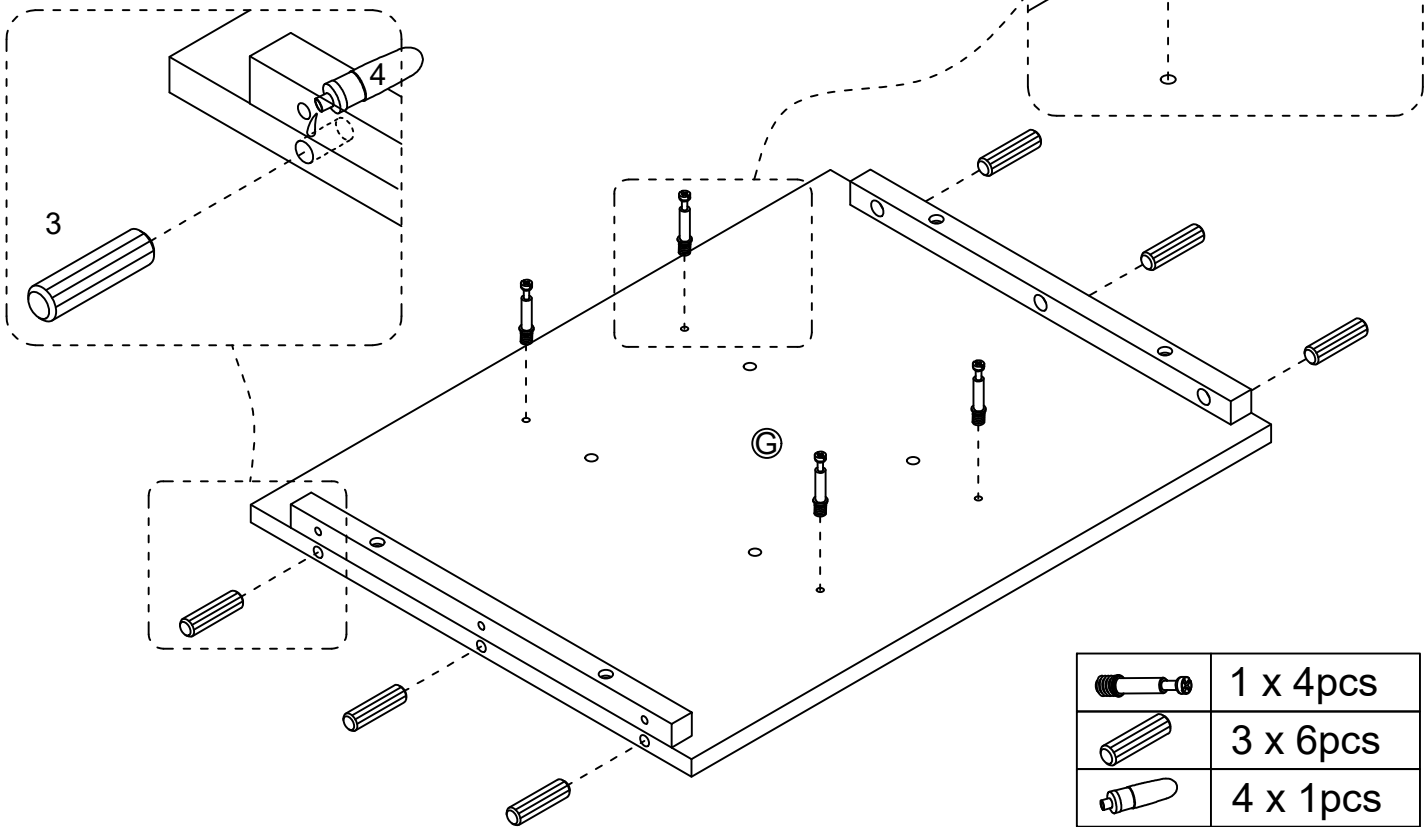


 2 x 2pcs

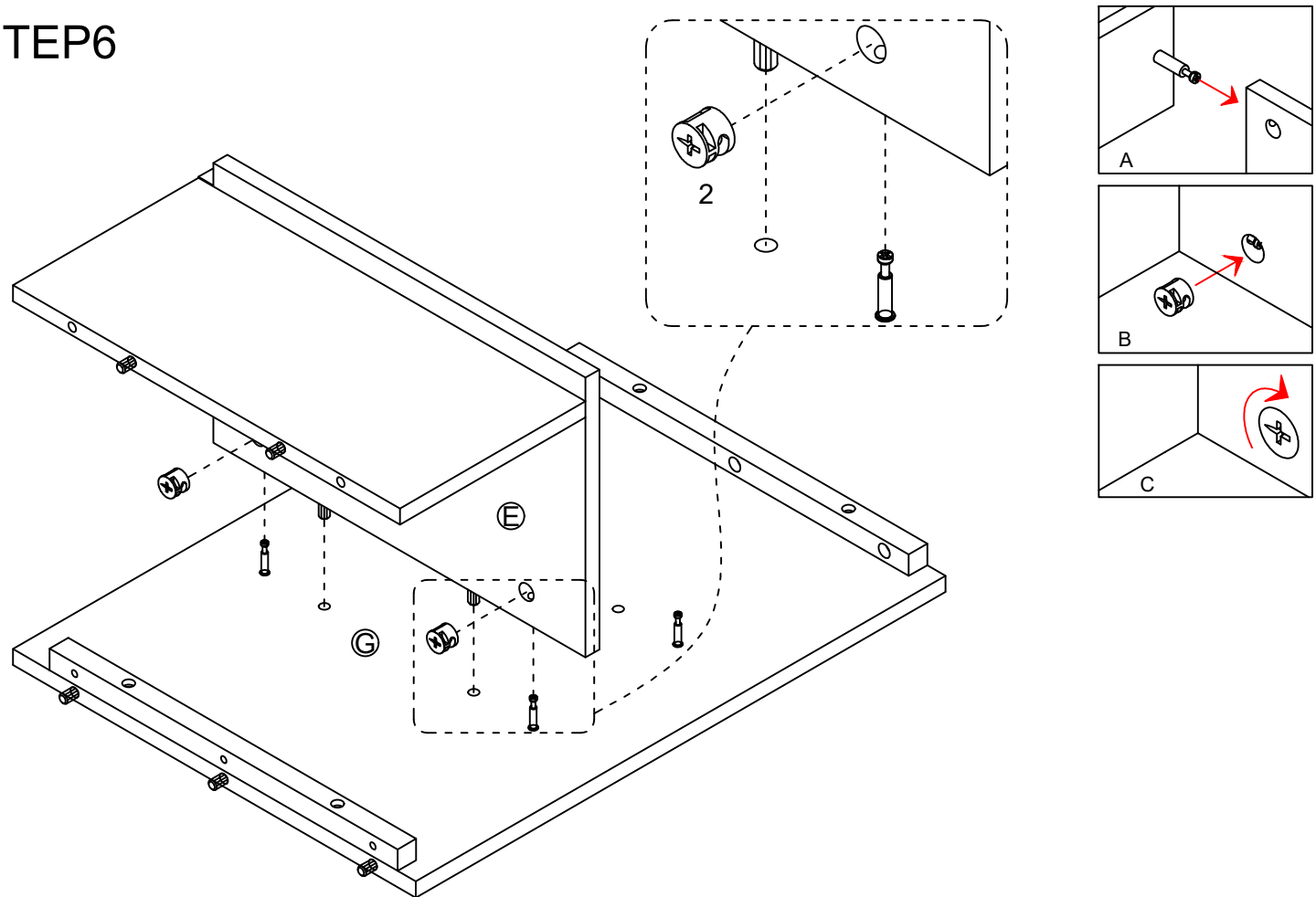
STEP5

Glue the wood dowels 3 into the inner holes on the side panels G.

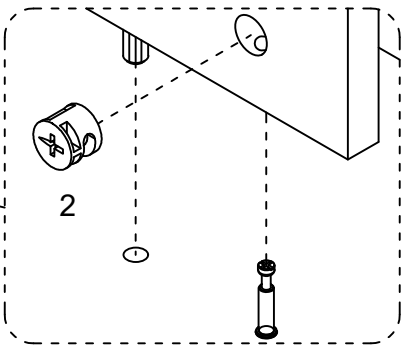
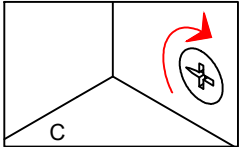
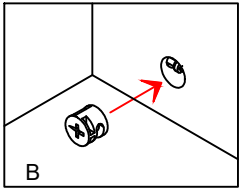
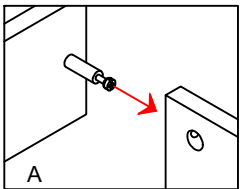
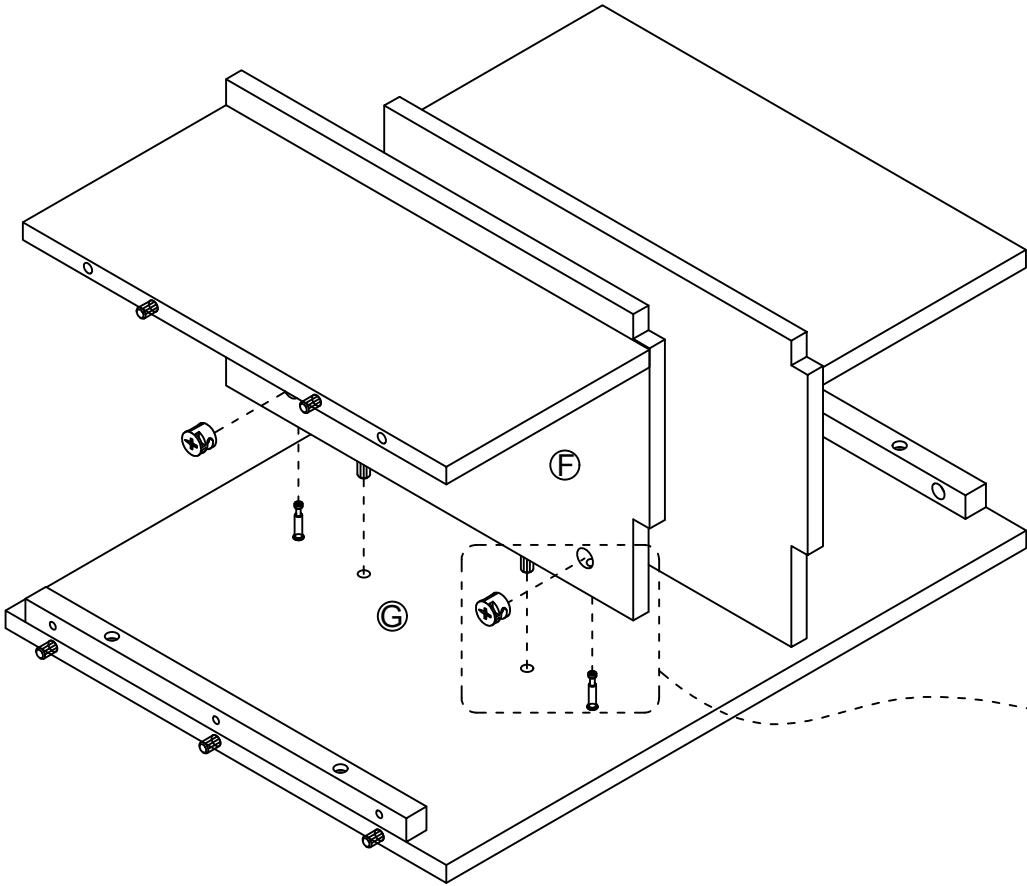
NOTE: It is very important to use a small amount of glue 4 on ends of dowels and wipe away excess glue immediately.




STEP6

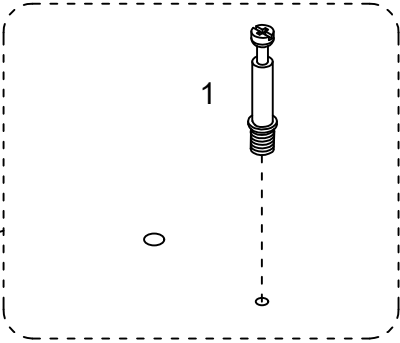
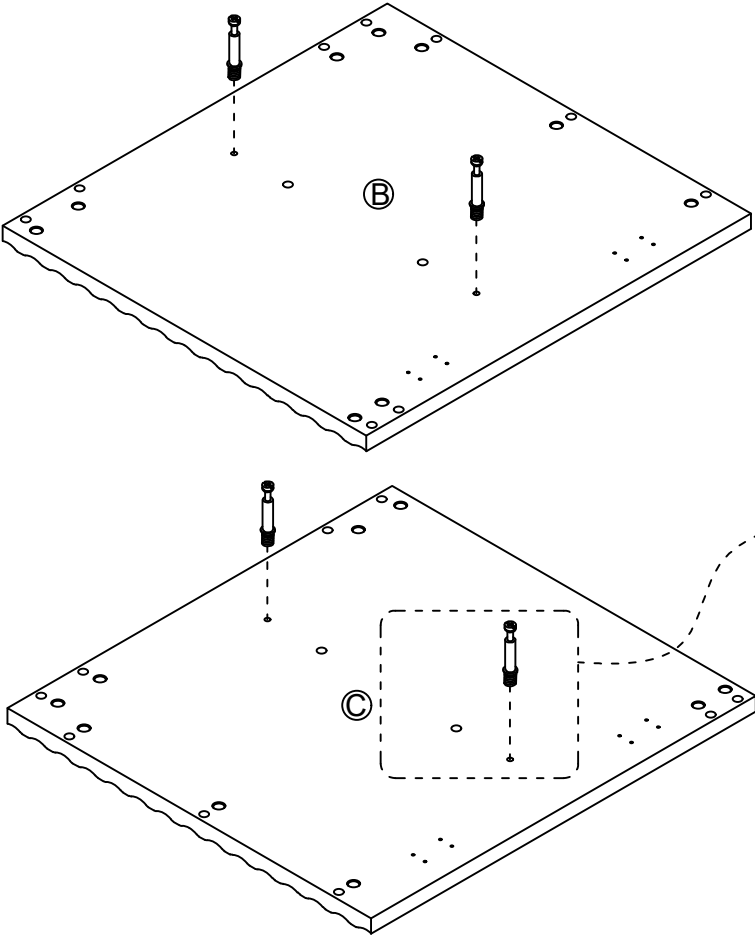


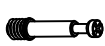
STEP7



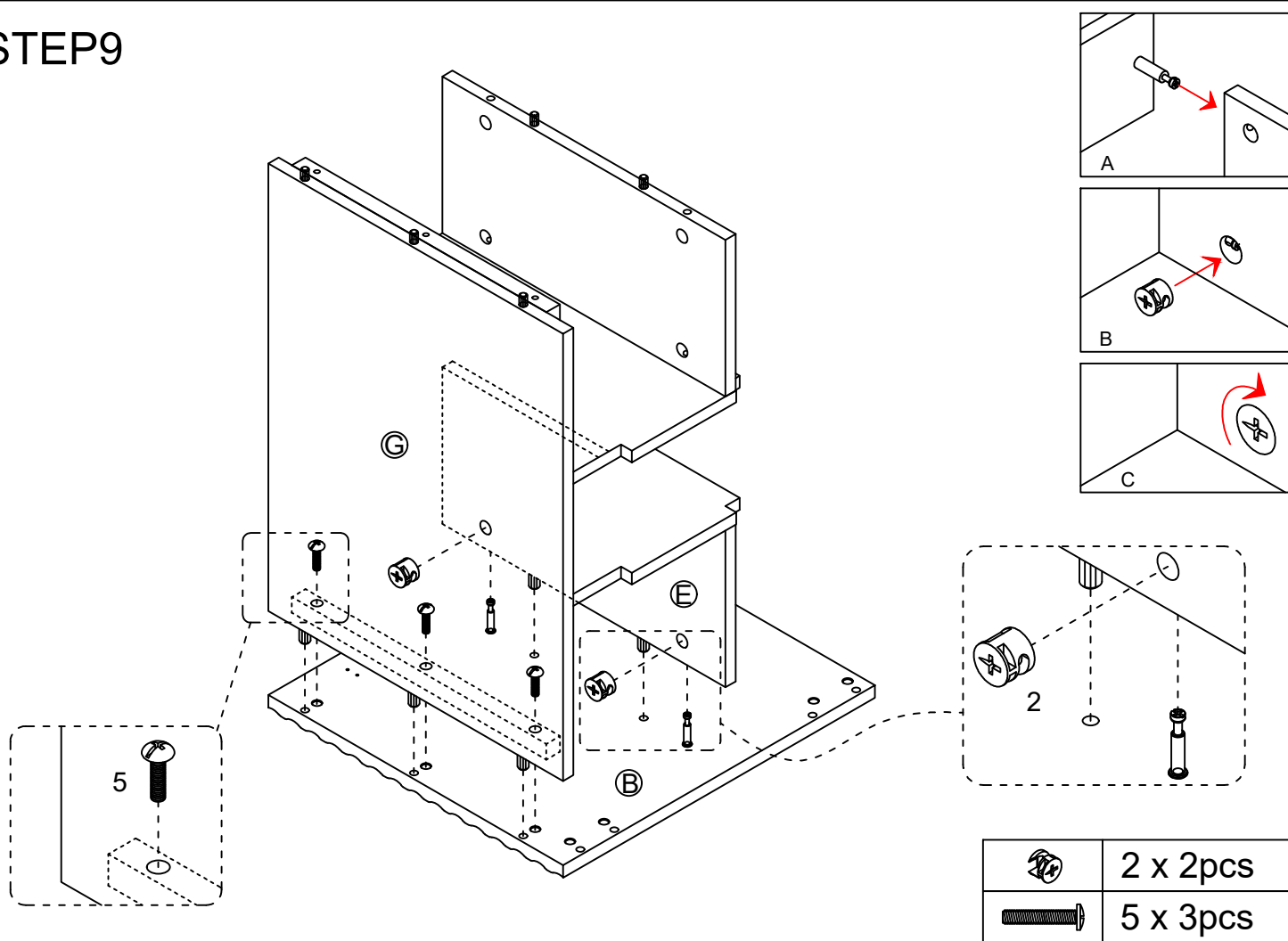
	2 x 2pcs
---	----------

STEP8

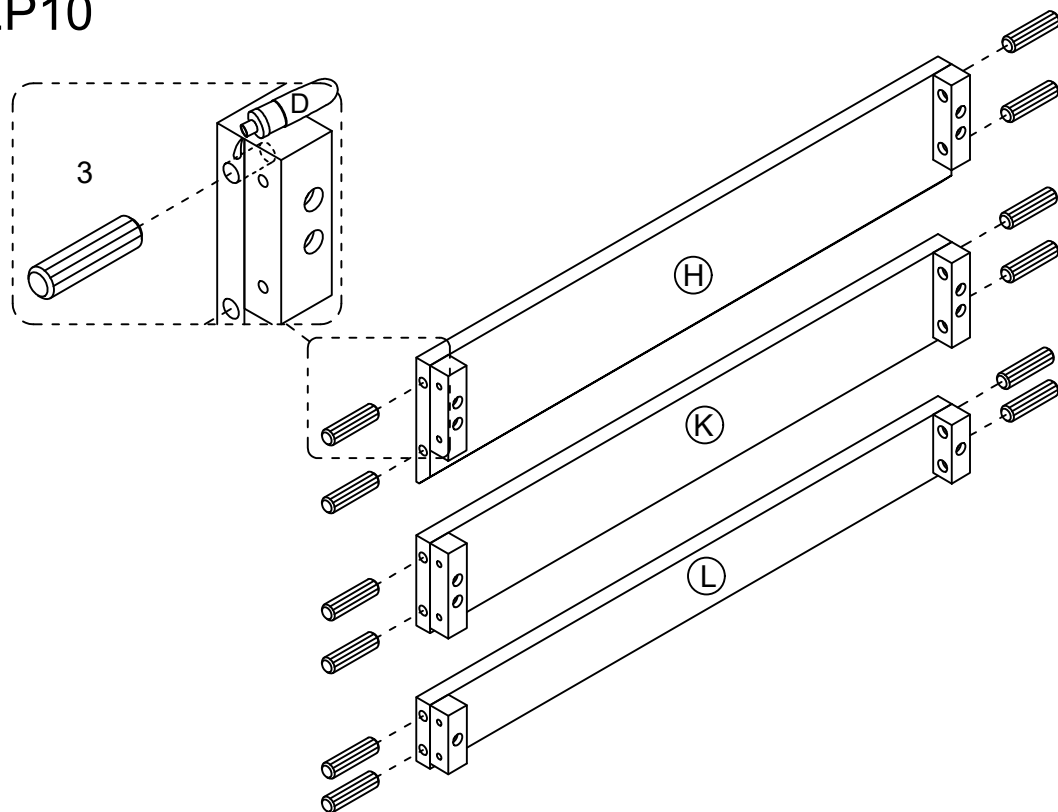


	1 x 4pcs
---	----------

STEP9



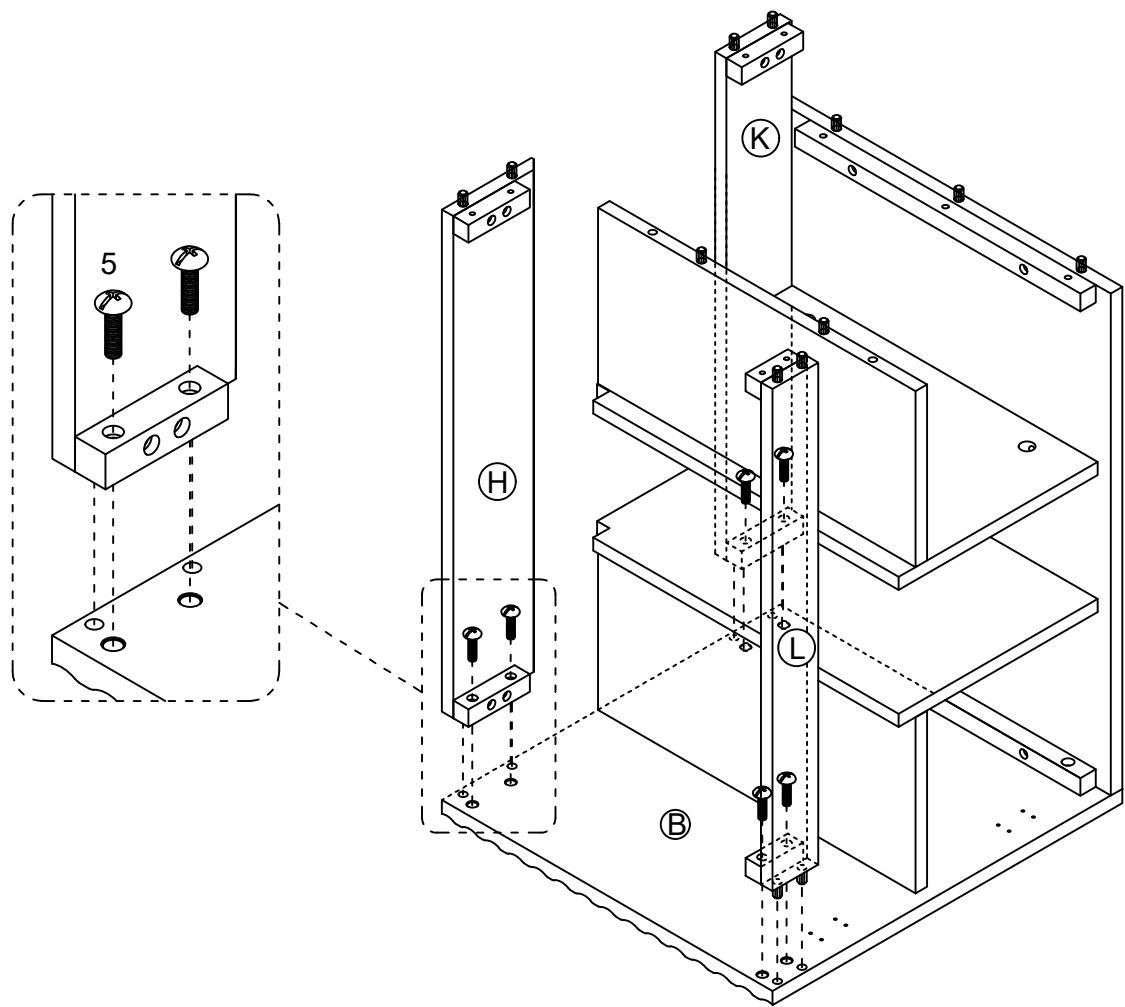
STEP10



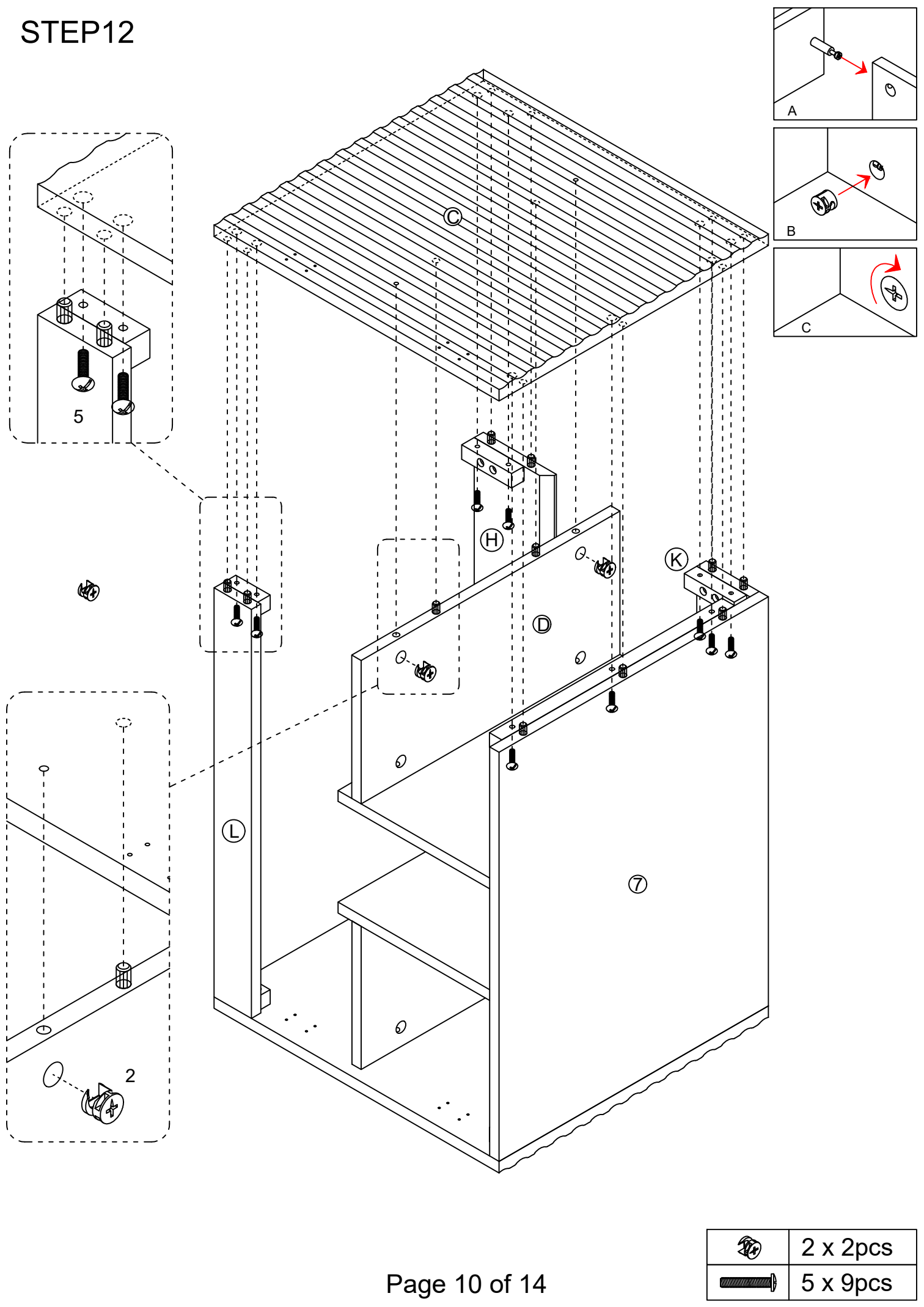
Glue the wood dowels 3 into the inner holes on the front upper rail H ,K and L .

NOTE: It is very important to use a small amount of glue 4 on ends of dowels and wipe away excess glue immediately.

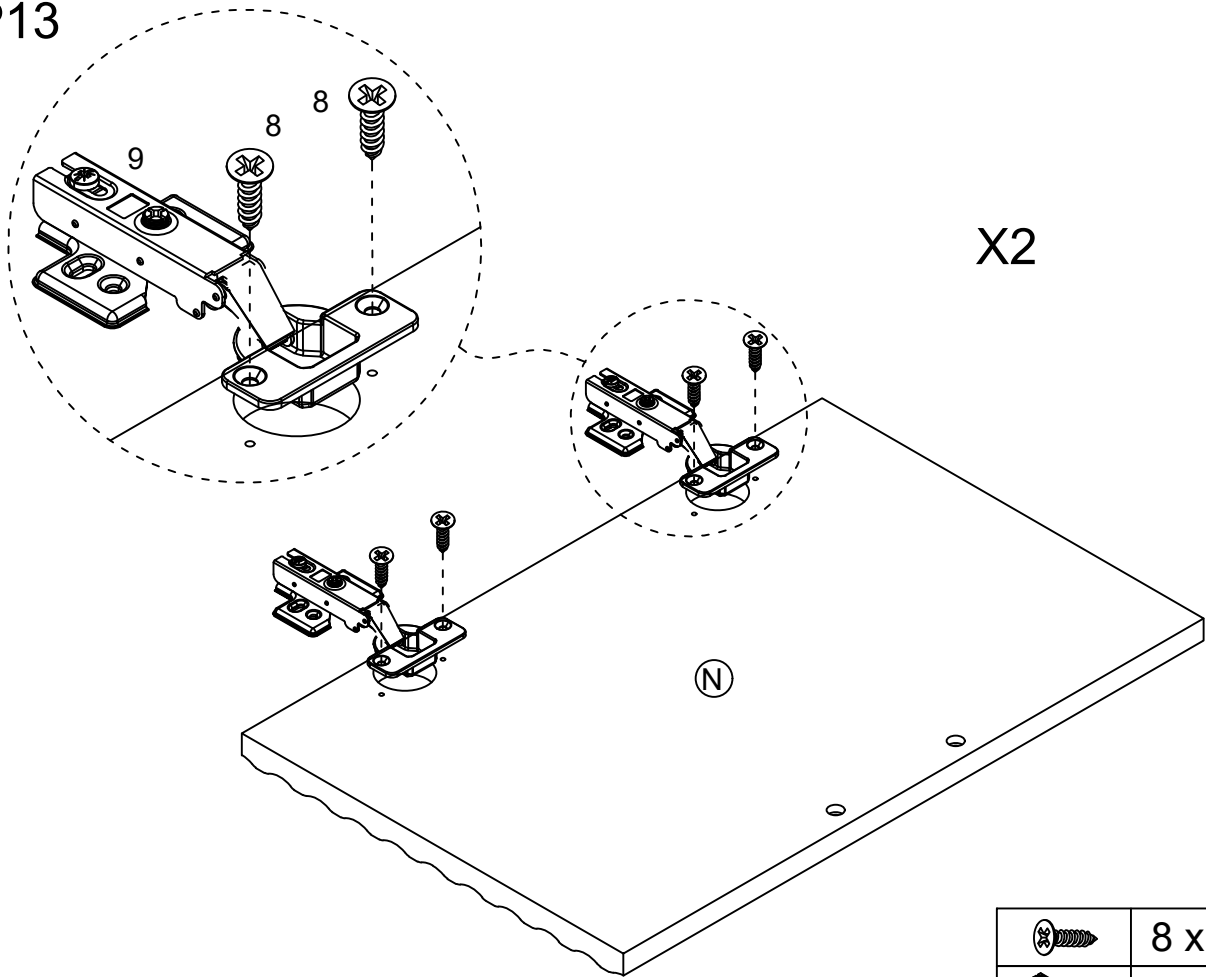
STEP11





STEP12

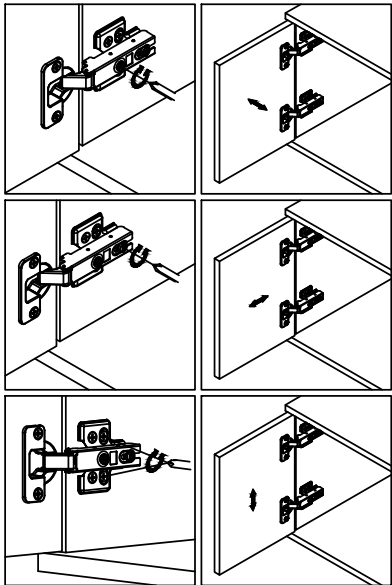
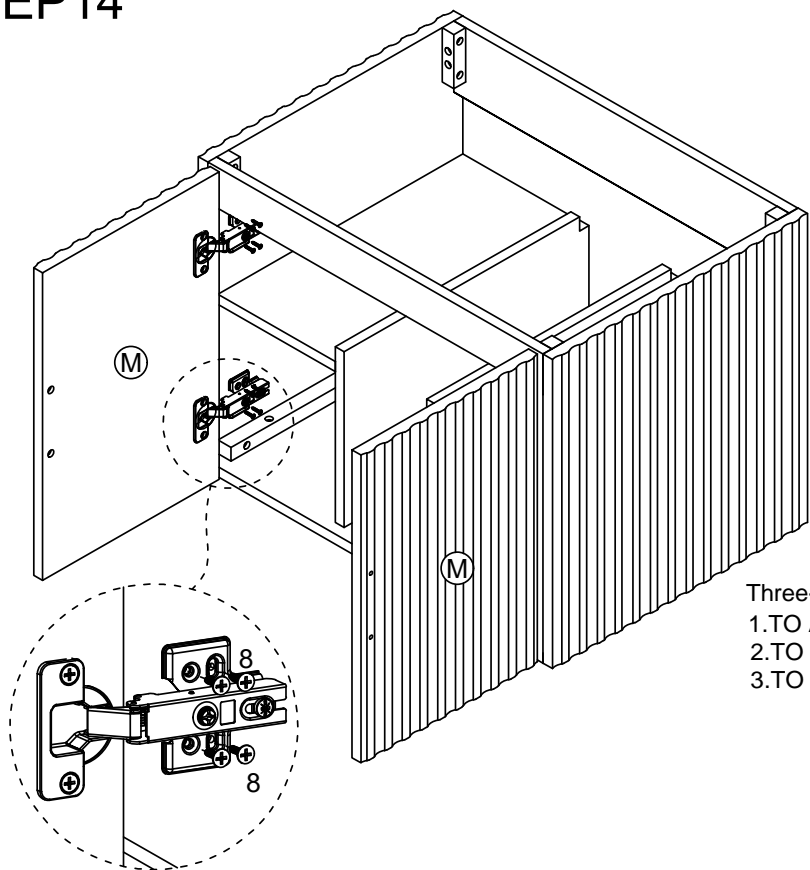


STEP13

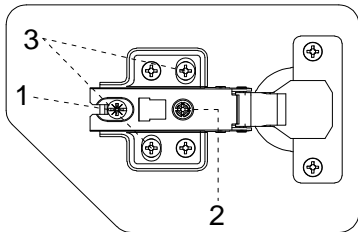



	8 x 8pcs
	9 x 4pcs

STEP14

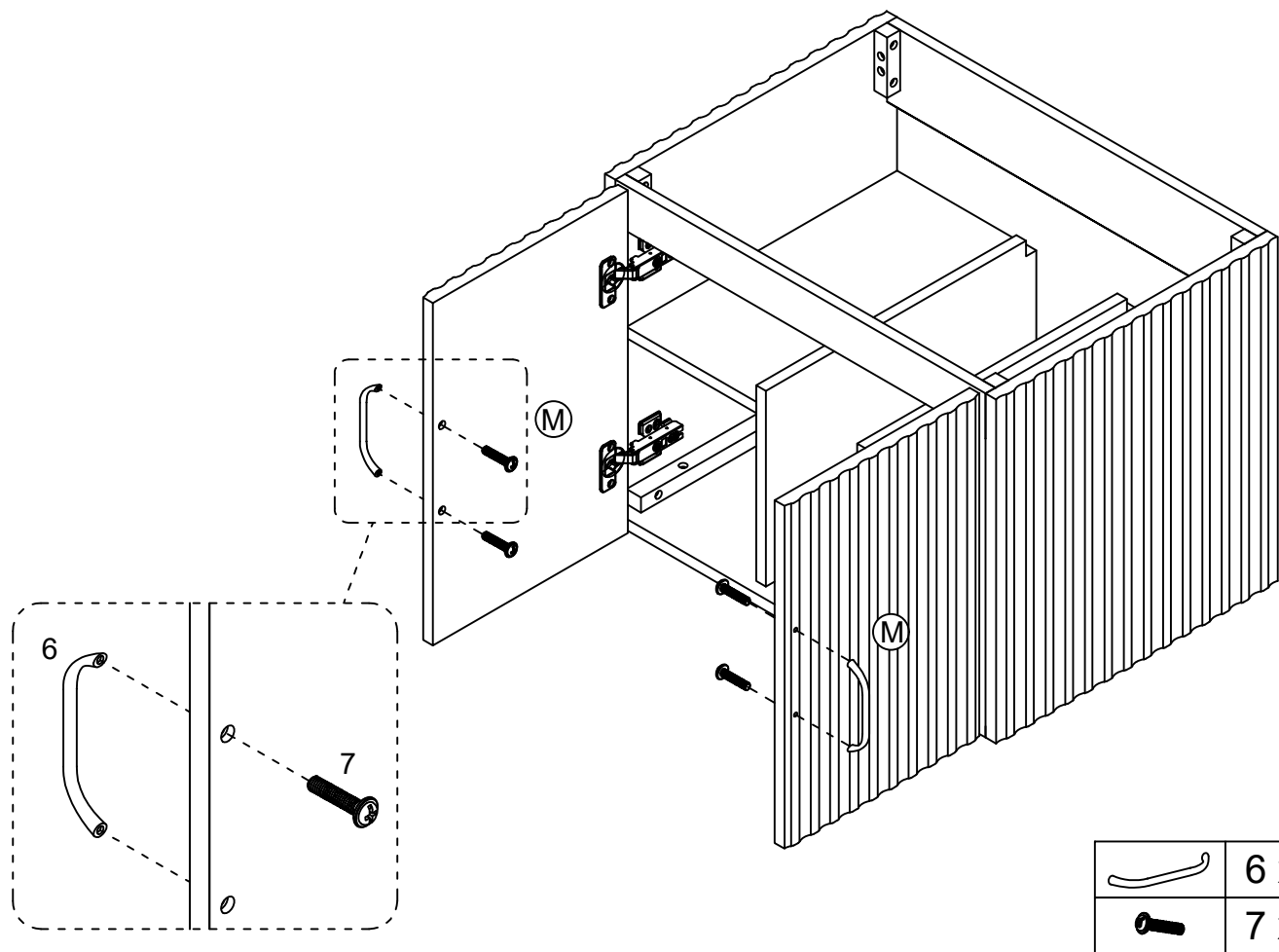


Three-way adjustable hinge for perfectly aligned doors
1.TO ADJUST DOOR FORWARD OR BACKWARD.
2.TO ADJUST DOOR TO RIGHT ORTO LEFT.
3.TO ADJUST DOOR UP OR DOWN.

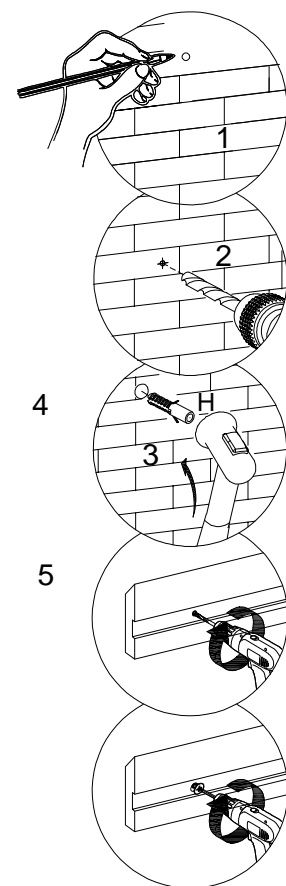
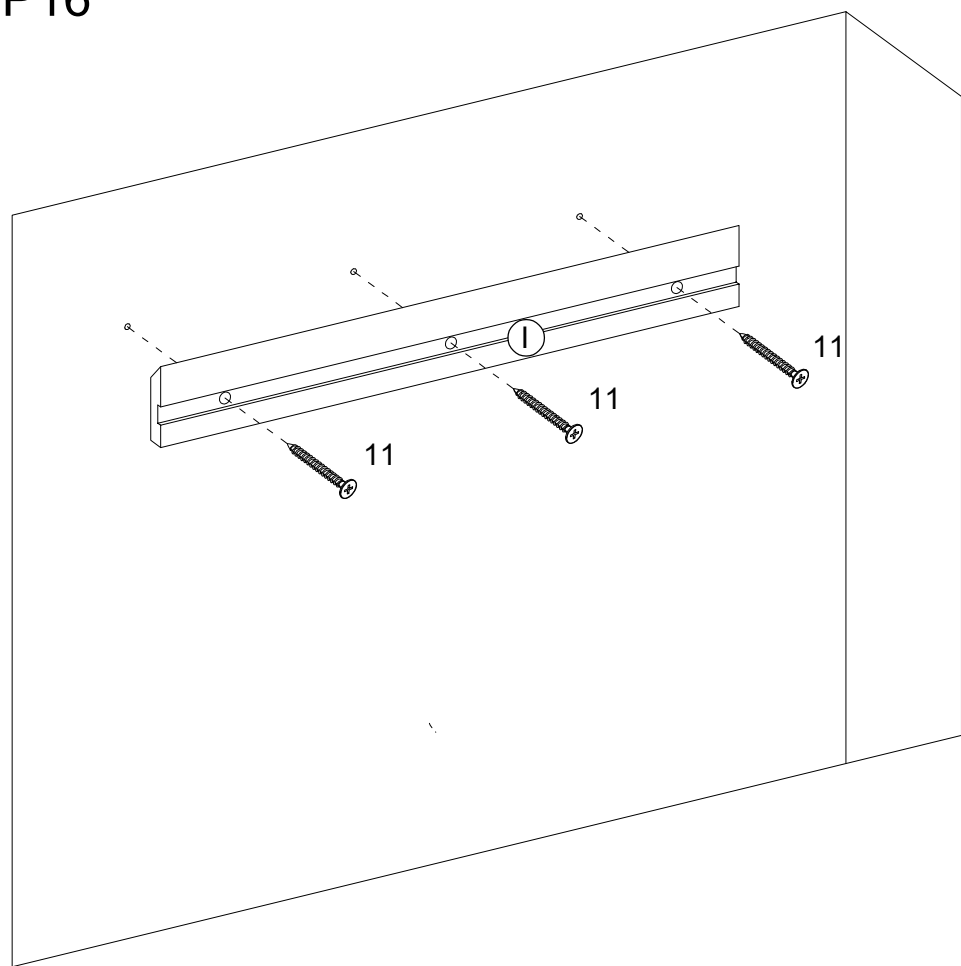


	8 x 16pcs
---	-----------

STEP15

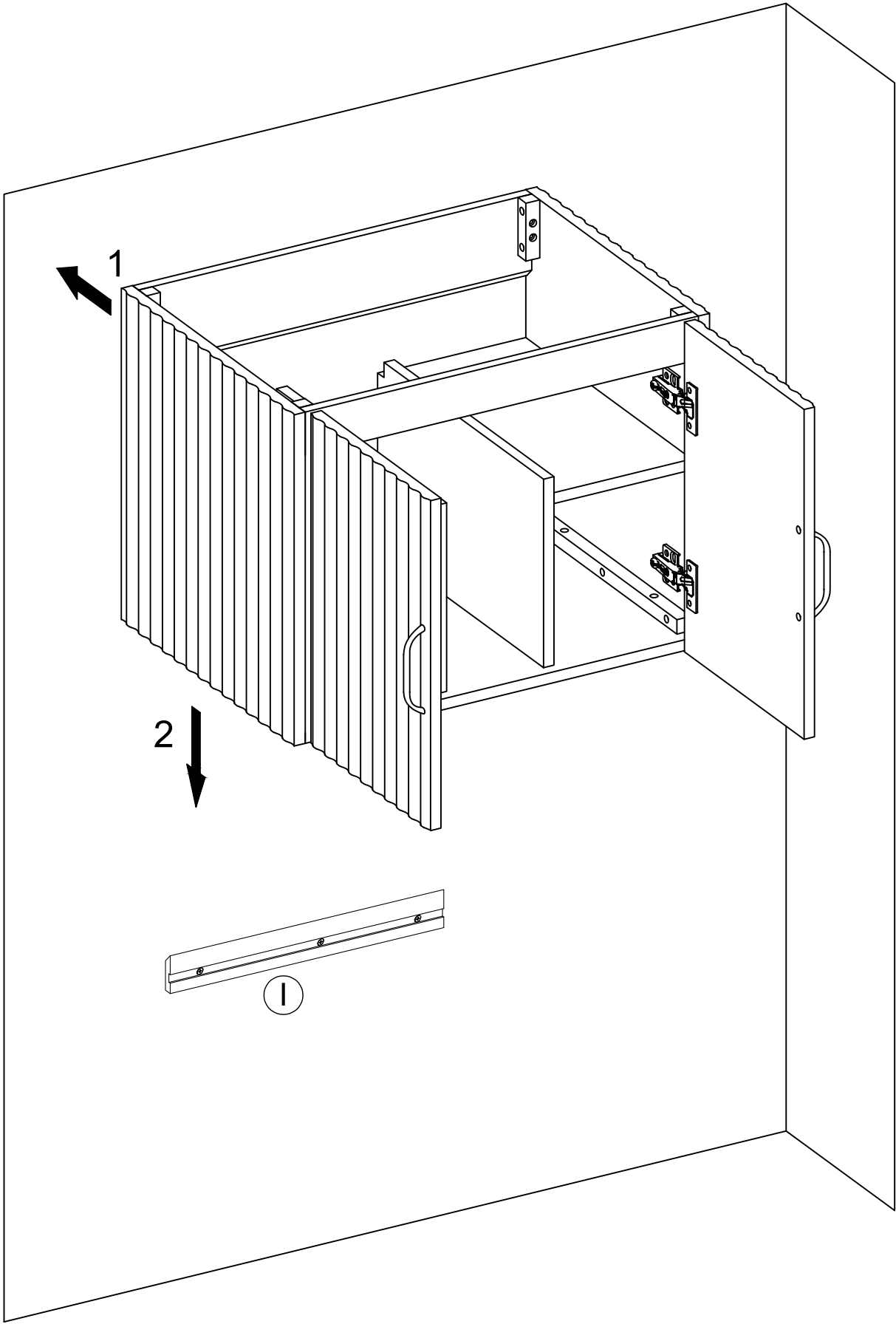


STEP16

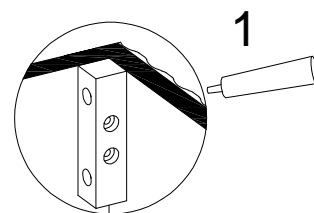
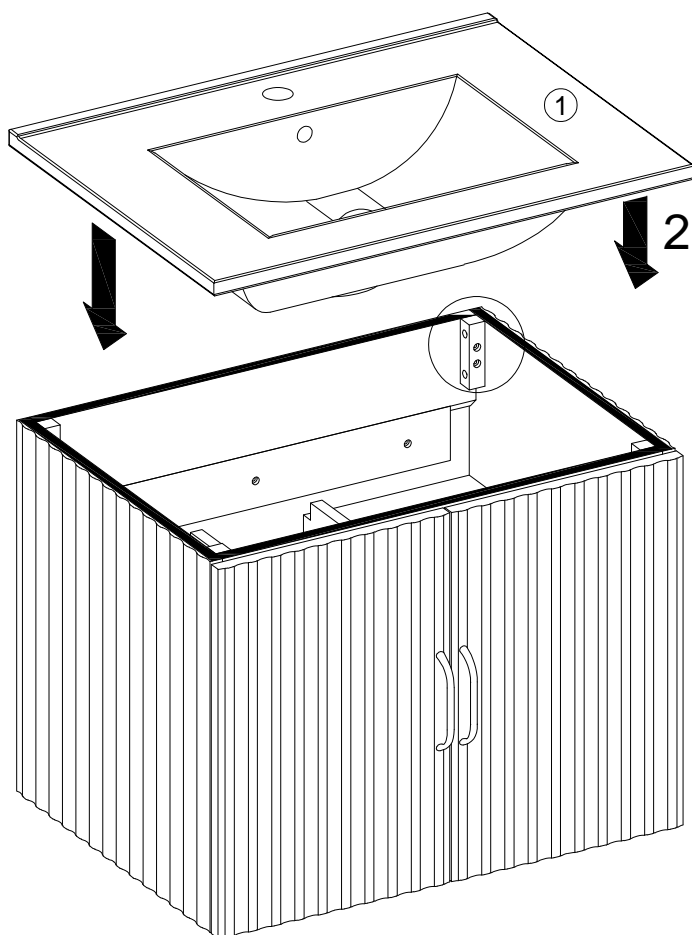


	10 x 3pcs
	11 x 3pcs

STEP17



STEP18



To install the Top (1) to the vanity (2). Apply silicone caulk to the top edge of the wood cabinet. With the help of another adult, gently lower the Sink top with assembled sink onto the cabinet. Make sure the Sink top is flush with the back side of the wood cabinet and the wood cabinet left and right side walls.

STEP19

