

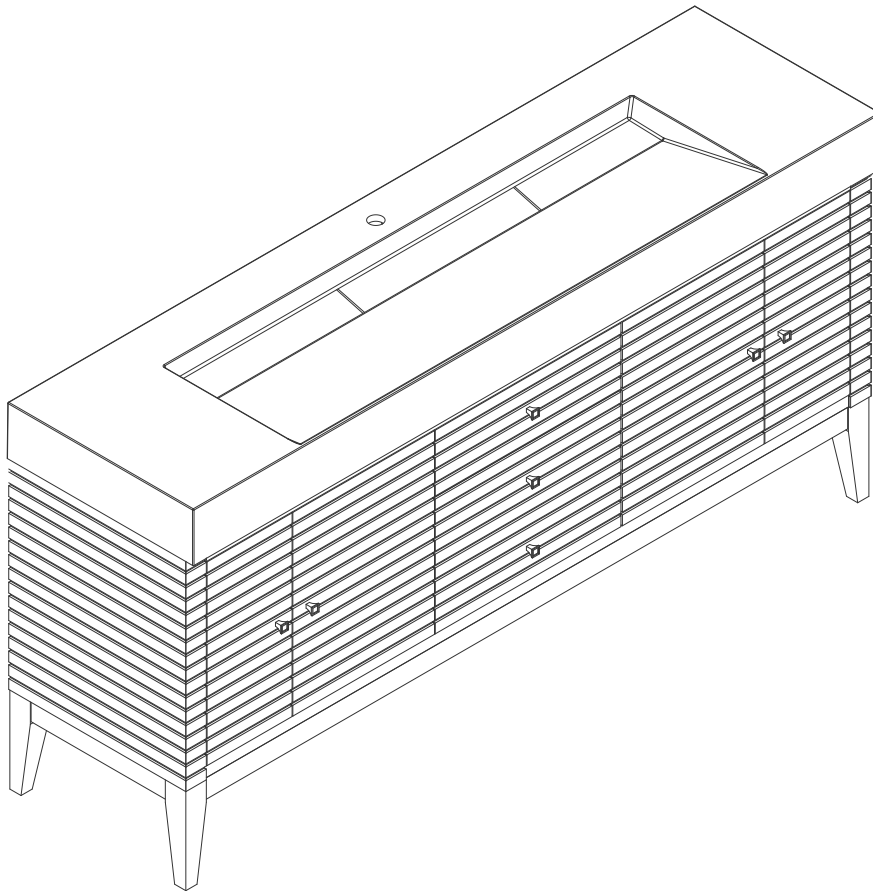
72" LINEAR VANITY

210-V72-GW

210-V72-WLT

210-V72-WW

JAMES MARTIN
VANITIES



Features and Materials

Solids: GW-Poplar; WLT-Walnut; WW-Rubber Wood

Panels: Plywood

Veneers: WLT/WW-Walnut

Installation Type: Floor Standing

Number of Basins: One, Integrated Sinktop

Sinktop Included: NO, Sold Separately (CS-S378S or CS-S378D)

Basin Overflow: NO

Number of Doors: Four

Number of Drawers: Three

Number of Tip Outs: 0

USB/Power Component: YES (ETL5011080)

Cord Length: 6'6"

Bamboo Storage Tray: NO

Assembly Required: NO

Drawer Box Material and Construction: 12mm Plywood/English Dovetail Joinery

Hardware Material and Finish: Zinc Alloy in Satin Nickel Color

Fits Drain Hole Size: 1 3/4"

Full Extension, Soft Close Glides

European Soft Close Hinges

Aluminum Laminate Drawer Liners

Adjustable Levelers

Dimension

Width: 72-3/8"

Depth: 18-3/4"

Height: 30-3/8"

Rough-In Height: 21-1/2"

210-V72-GW
210-V72-WLT
210-V72-WW

JAMES MARTIN
VANITIES



Diagrams are of cabinet only- James Martin Optional integrated sinktops are not shown

2/3

Version: 202404

72" LINEAR VANITY

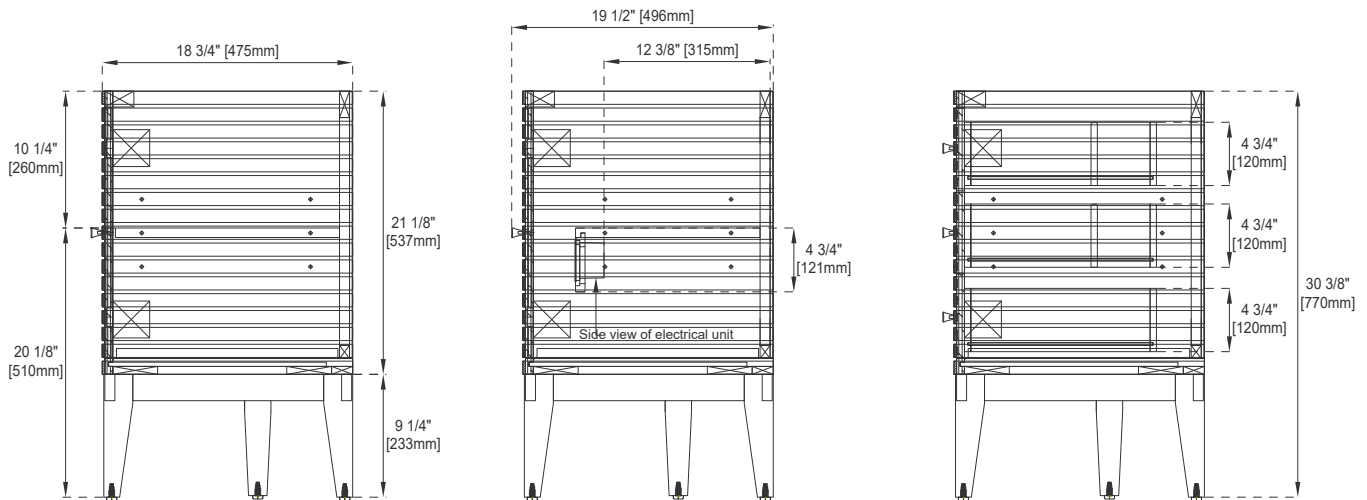
210-V72-GW

210-V72-WLT

210-V72-WW

JAMES MARTIN

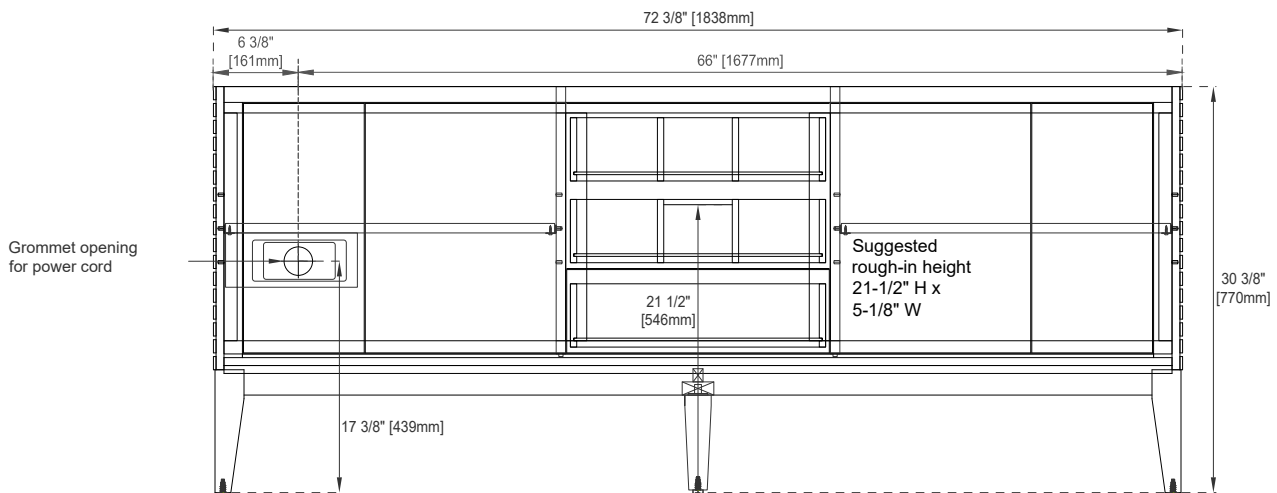
VANITIES



Side View 1

Side View 2

Side View 3



Back View

All dimensions are nominal

Diagrams are of cabinet only-James Martin Optional integrated sinktops are not shown

Visit website for warranty and installation information
www.jamesmartinvanities.com