



**PIONEER INDUSTRIES, INC.**  
3325 S. Garfield Ave.  
Commerce, CA 90040  
(800) 338-9468  
www.pioneerind.com

# INSTALLATION

## Tools:



Adjustable Wrench



Plumbers Putty



Teflon Tape



Rags

**Model Number:** 2LG260, 2LG260B, 2LG260H, 2LG261, 2LG261B, 2LG261H, 2LG270, 2LG270B, 2LG271



## Warnings and Notes:

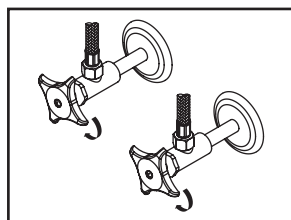
Check with local plumbing code requirements before installation.

This product should be installed by a local listed plumber.

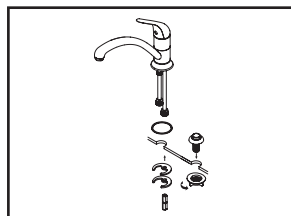
**Do not use plumbers putty on threads.**

## Installation Steps:

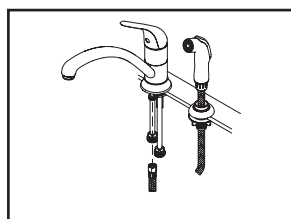
### Single Handle Kitchen Faucet



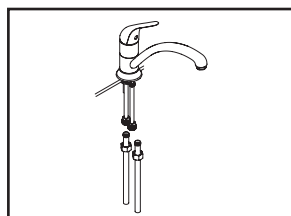
(1) Shut off water supplies. Remove old faucet. Clean mounting surface in preparation for new faucet.



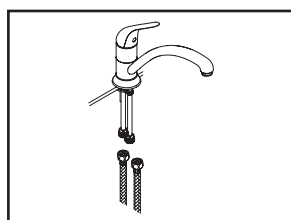
(2) Make sure washer is under escutcheon. Insert faucet through mounting hole. Slide mounting plates through two inlet tubes and tighten locknut to the mounting bolt from underneath the sink. Go to step (4) if faucet is without side spray. Place side spray holder in position on the sink. Tighten locknut to secure side spray holder from underneath the sink.



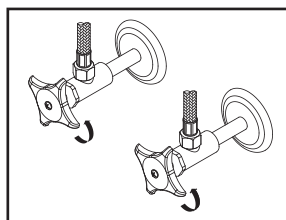
(3) Lead side spray hose through side spray holder, connect side spray hose to faucet outlet tube from underneath the sink.



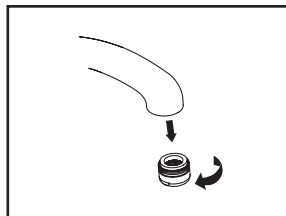
(4a) when using ball-nose supply tubes to connect faucet to water supply valves, slip coupling nut onto supply tubes. Ball-nose coupling will go partially into inlet tube, tighten coupling nut (do not overtighten) to faucet inlet tube. Install opposite end according to manufacturer's instruction for both tubes.



(4b) when using flexible supply hose: this faucet requires one end of the flexible supply hose to have 1/2" IP female connection nut, the other end must match with the outlet of water supply valve. Connect flexible supply hoses to faucet inlet tubes and water supply valves.



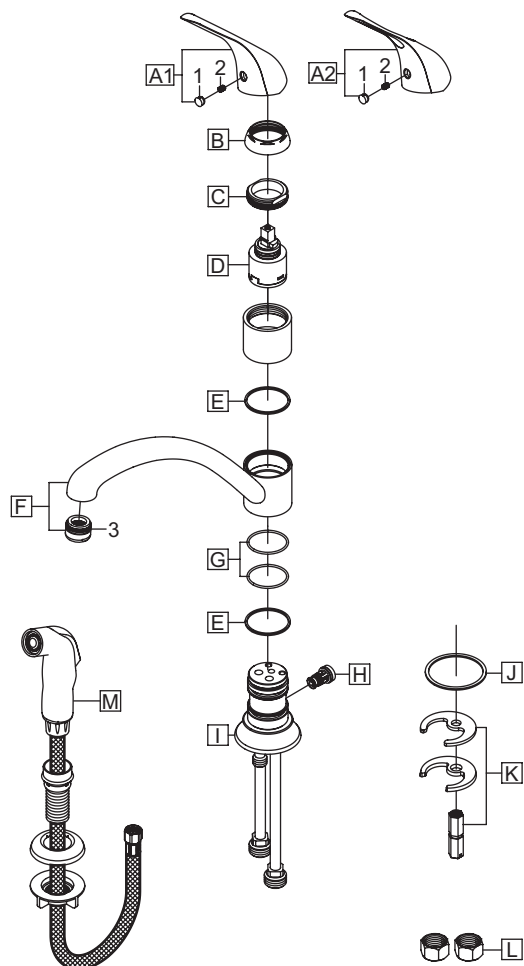
(4c) when faucet comes with flexible inlet supply hoses (model # 2LG260H and 2LG261H): connect hot & cold inlet supply hoses to water supply valves. Use 3/8" compression male to 1/2" IP female adapter to connect inlet supply hose and water supply valve if valve has 1/2" outlet. Adapters are optional and not provided with faucet.



(5) Important: After installation is complete, remove aerator. Turn water supplies on and allow both hot and cold water to run at least one minute each. While water is running, check for leaks. Turn off water and replace aerator.

## Exploded Drawing :

\* Note: Please specify finish/color when ordering.



	ITEM #	DESCRIPTION
A1	X-1200001*	Legacy Lever Handle (For 2LG26X)
A2	X-1200002*	Legacy Loop Handle (For 2LG27X)
B	X-4200001*	Cap
C	X-4200002	Retainer Nut
D	X-3900001	Ceramic Disc Cartridge
E	X-4200003	Spout Gasket
F	X-2200001*	Legacy Spout
G	X-4200004	O-Ring
H	X-4200007	Diverter Piston (For 2LG261, 2LG261H, 2LG271)
I	X-4200109*	Escutcheon
J	X-4200110	Washer
K	X-5200015	Mounting Kit
L	X-4900004	Supply Nut (For 2LG260, 2LG261, 2LG270, 2LG271)
M	X-4200008*	Side Spray Assembly (For 2LG261, 2LG261H, 2LG271)
1	X-4900001	Button
2	X-4900002	Allen Screw
3	X-4900081*	1.5 GPM Aerator

**PIONEER**

For more care information or trouble shooting inquiries about  
your Pioneer product, please call:

**Pioneer Industries, Inc.** (800) 338-9468

Monday-Friday 8AM to 8PM EST (5AM to 5PM PST)

[www.pioneerind.com](http://www.pioneerind.com)