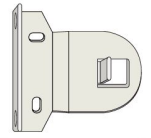
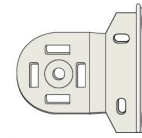
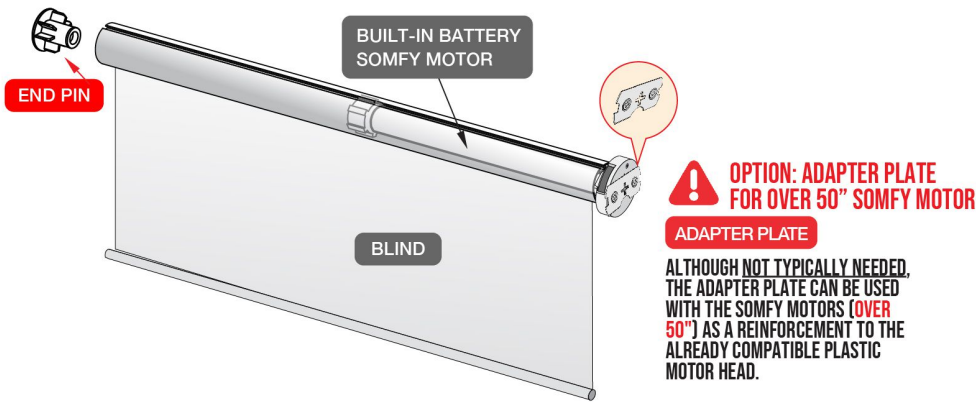


IF YOU ARE MISSING A PACKAGE, PLEASE CONTACT US. 1-201-313-0100

COMPONENTS



[UNIVERSAL IN/OUT MOUNTING BRACKET]

TOOLS REQUIRED



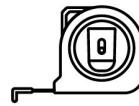
LEVEL



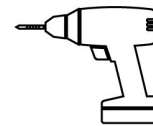
PENCIL



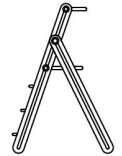
SCREW DRIVER



TAPE MEASURE

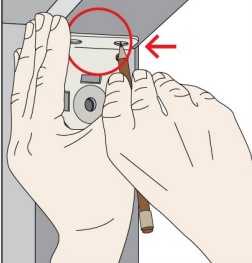


DRILL / BIT



STEP STOOL

L-BRACKET

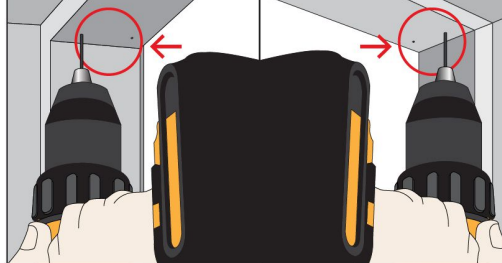


EX) INSIDE MOUNT

R-BRACKET



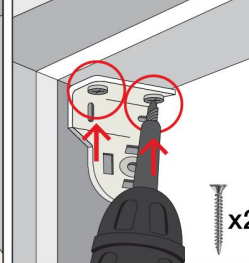
L-BRACKET



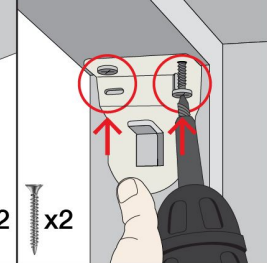
EX) INSIDE MOUNT

R-BRACKET

L-BRACKET



R-BRACKET



INSIDE MOUNT

1

PLACE THE BRACKETS IN THE TOP CORNERS OF THE WINDOW FRAME.
USE A PENCIL TO MARK THE LOCATIONS FOR EACH SCREW.

2

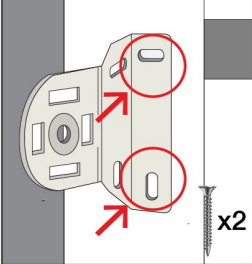
DRILL THE HOLES

3A

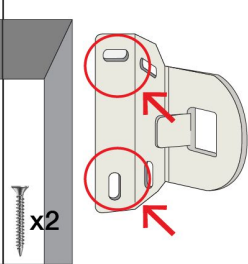
SCREW DOWN THE L & R-BRACKET ON TO THE CEILING

IMPORTANT: L & R-BRACKET SHOULD BE LEVELED

L-BRACKET

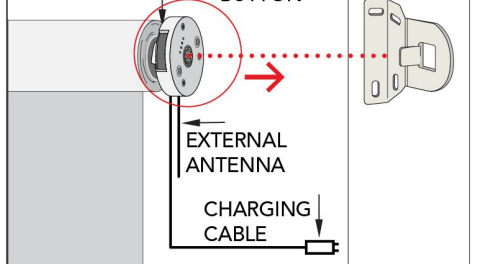


R-BRACKET



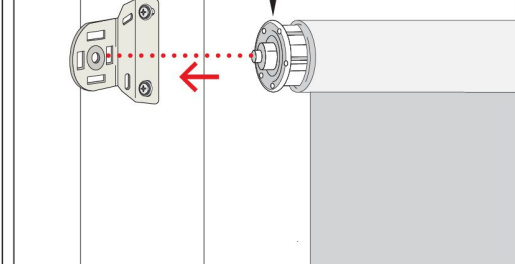
OUTSIDE MOUNT

PROGRAMMING
BUTTON



RIGHT SIDE

END PIN



LEFT SIDE

3B

SCREW DOWN THE L & R-BRACKET ON TO THE WALL

4

INSERT MOTOR HEAD INTO THE **RIGHT SIDE** BRACKET **FIRST**

5

INSERT END PIN INTO THE BRACKET HOLE