

# INSTALLATION INSTRUCTIONS FOR 6212

For Wall Mount Fixture

**WARNING! SHUT POWER OFF AT FUSE OR CIRCUIT BREAKER .**

## PREPARATION

1. Shut off power at the fuse box or circuit breaker box. If necessary. Remove old fixture and all mounting hardware from wall junction box.
2. Carefully unpack your new fixture and lay out all the parts on a clear area. Take care not to lose any small parts necessary for installation.

## MOUNTING THE FIXTURE (FIG. 1)

3. Secure mounting Back Plate (A) to the outlet box using the two junction box Screws (B). The side of the mounting back plate marked "GND" must face out.

## CONNECTING THE WIRES (FIG. 2)

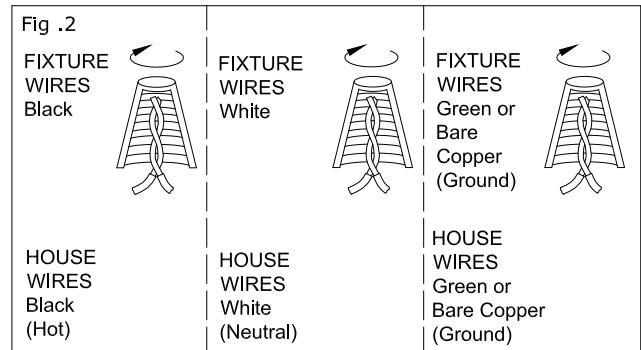
4. Connect the fixture wires to the junction box wires as shown in Fig. 2. Make sure all wire connectors are secured and do not easily pull off with a slight tug. If there is no green ground wire from the junction box, connect the fixture ground wire to the mounting back plate with the green screw provided.
5. Tuck these wire connections neatly into the wall junction box.
6. Place the fixture's Back Plate (C) over the mounting back plate. Then secure it with the two screws (D).

## COMPLETING THE INSTALLATION

7. Place the Glass Shade (F) rotation into the Socket Cup (E) by rotating it to lock.

8. Install the light bulbs in accordance with fixture's specifications use TYPE T10 for your fixture. **(DO NOT EXCEED THE MAXIMUM WATTAGE RATING!!)**

Return the Power to the junction box and test the fixture. Your installation is now complete.



MIN 75°C SUPPLY CONDUCTORS



american  
lighting  
association

