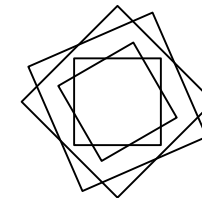
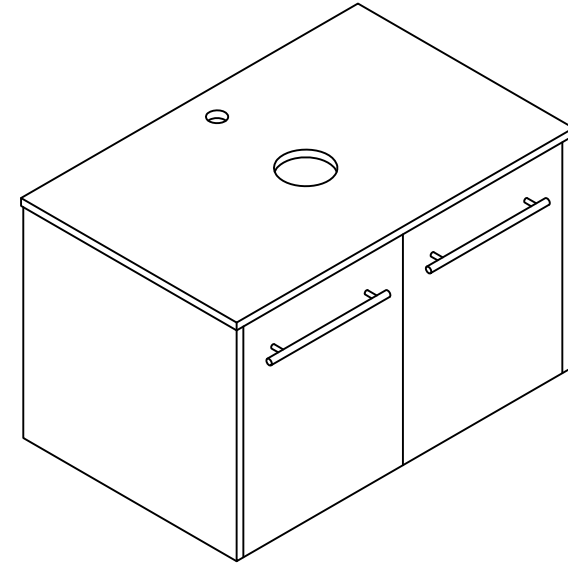


Installation Manual- BV C04124
BV C04130

MOTIVATE
YOUR LIFE !

THANKS FOR WATCHING

Your feedback is invaluable to us and we would love to hear about your experience. Please take the time to leave us a review.




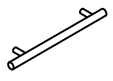











Thank you for shopping with us!

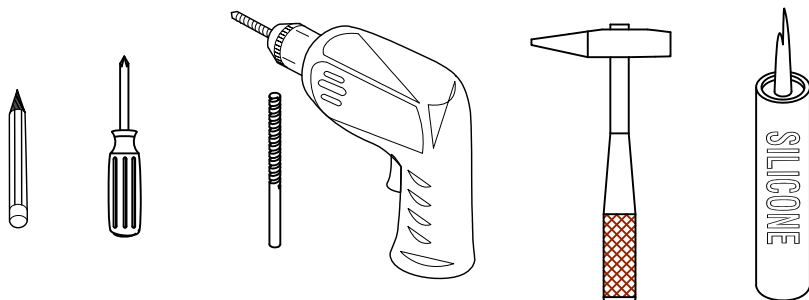
We encourage you to take a few minutes to go through this booklet. It contains important information on installation and care tips to keep your furniture looking as good as new.

Item NO.:BV C04124 / C04130

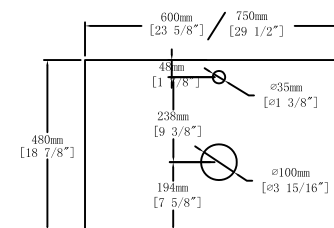
Hardware

NO.	Draw	QTY	NO.	Draw	QTY
A	 Screws Ø4x14mm	44	I	 Hinges	4
B	 Two-in-one connector	17	J	 Handles	2
C	 Two-in-one connector	17	K	 Screws M4x20mm	4
D	 Wood plug	4	L	 Anti-collision gasket	4
E	 Plastic anchor(Ø10mm)	4	M	 Screwdriver	1
F	 Screws for fix on the wall	4			
G	 Bracket (53x70x44mm)	2			
H	 Bracket (19x19x35mm)	2			

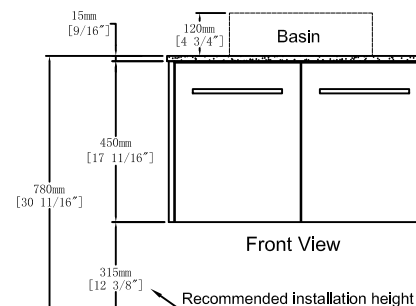
Recommended tools



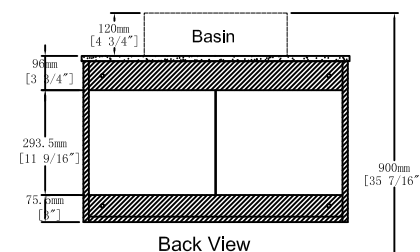
Dimensions



Top View



Front View



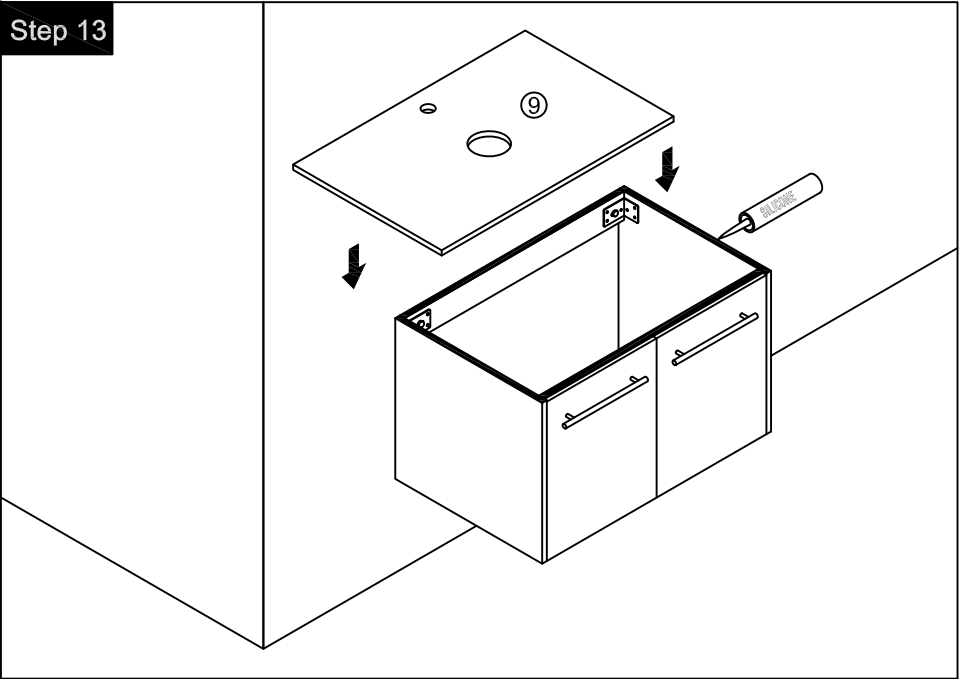
Back View

Floor

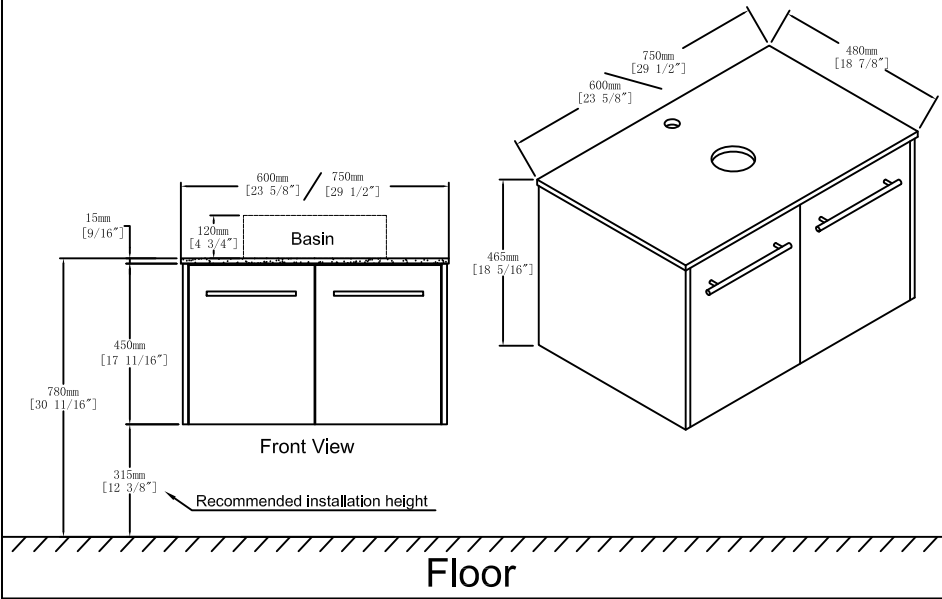
CARE CLEANING AND MAINTENANCE

- 1.Dust regularly with a soft , dry cloth.
- 2.Avoid the use of all chemicals household cleaners, abrasives, or cleaners that contain lemon, vinegar, or other acids that may damage the finish.
- 3.Excessive exposure to sunlight and extreme changes in temperature and moisture can damage wood furniture.
- 4.The sink top is resilient, but care needs to be taken to preserve its appearance.
- 5.Do not place hot appliances, such as curling irons and hot hair dryers directly on the countertop. Wipe spills immediately.

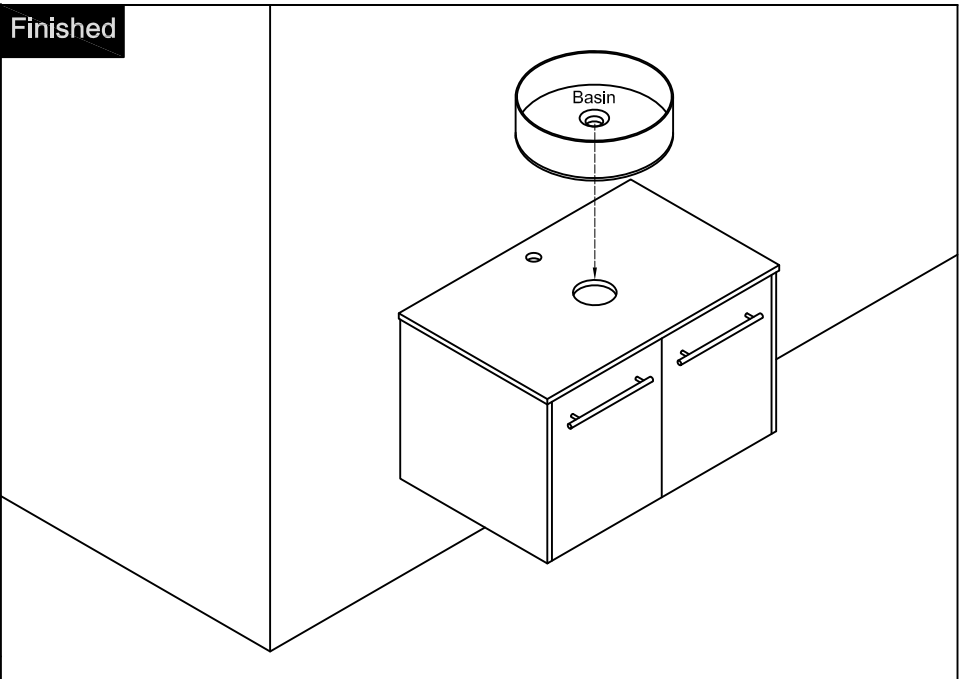
Step 13



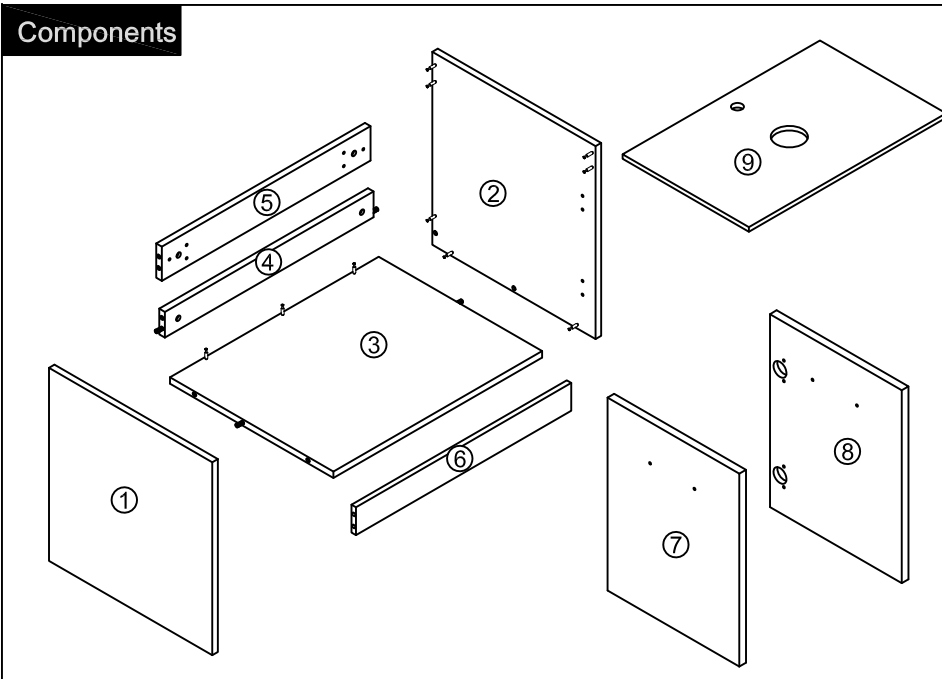
Dimensions



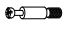

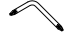
Finished

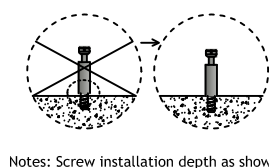
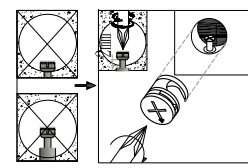
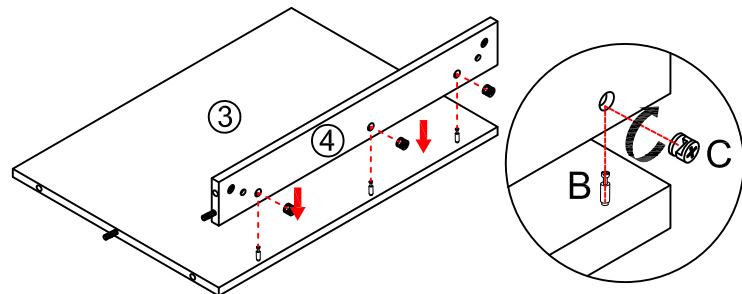


Components

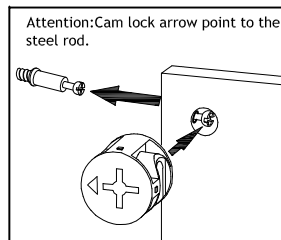


Step 1

-  x3
-  x3
-  x1

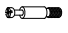


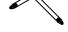


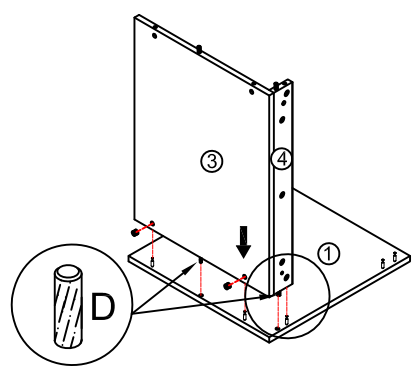
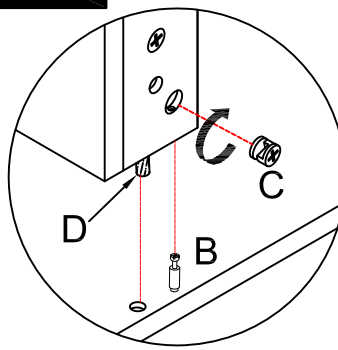
Notes: Screw installation depth as shown



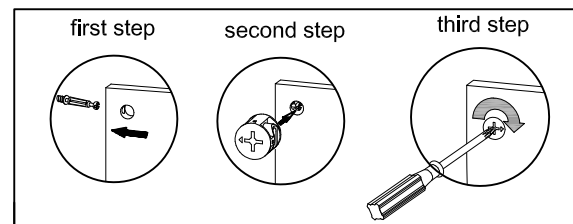
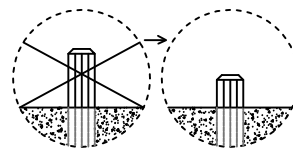
Attention: Cam lock arrow point to the steel rod.

Step 2




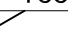
-  x3
-  x3
-  x2
-  x1

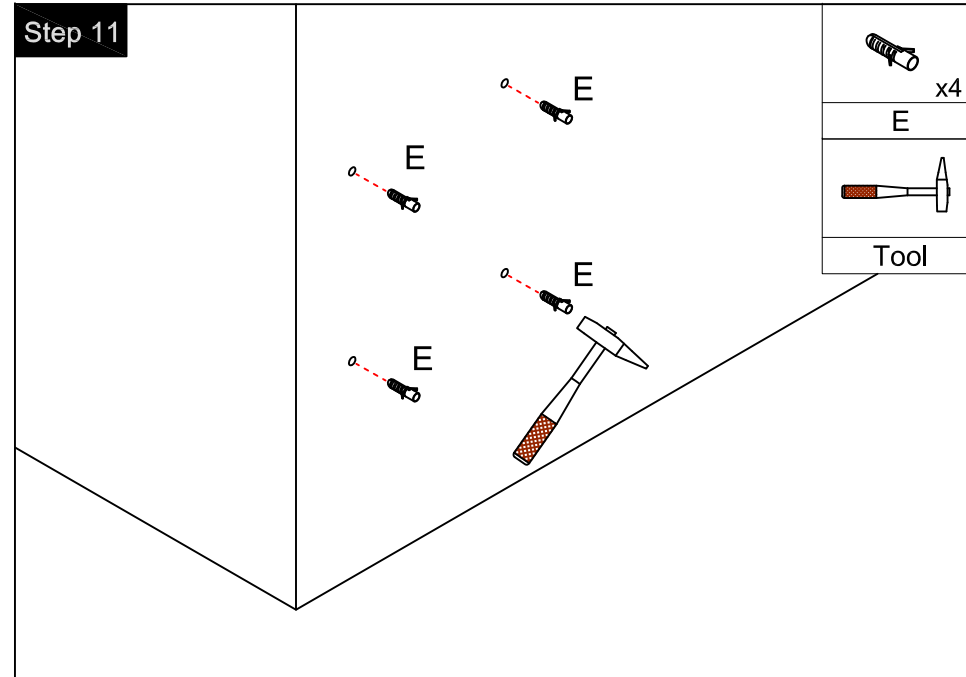


Note: The D parts are used for these two holes

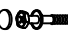





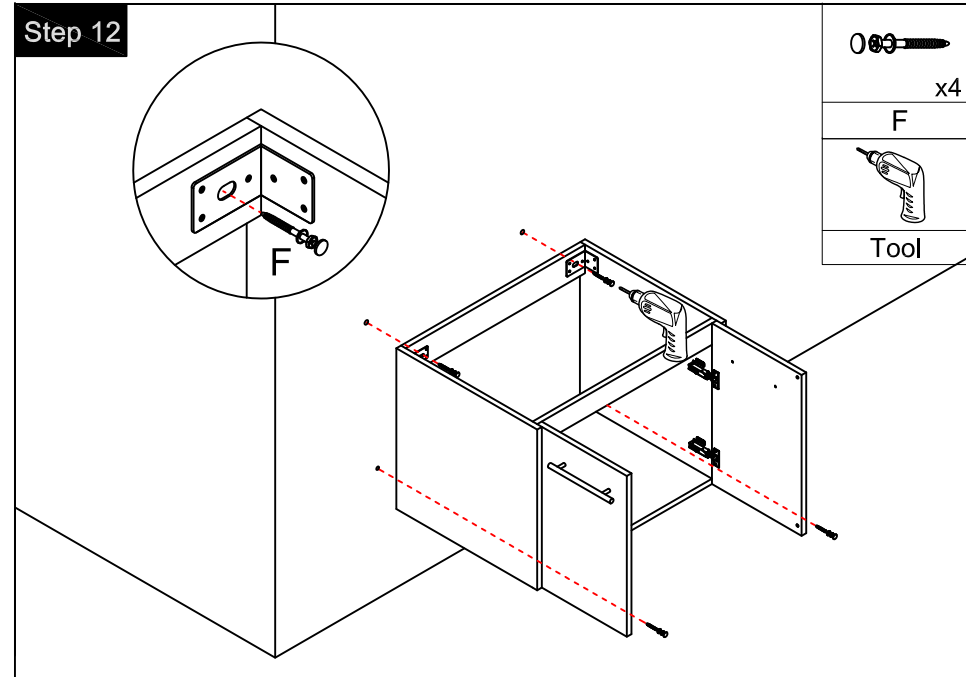
Step 11

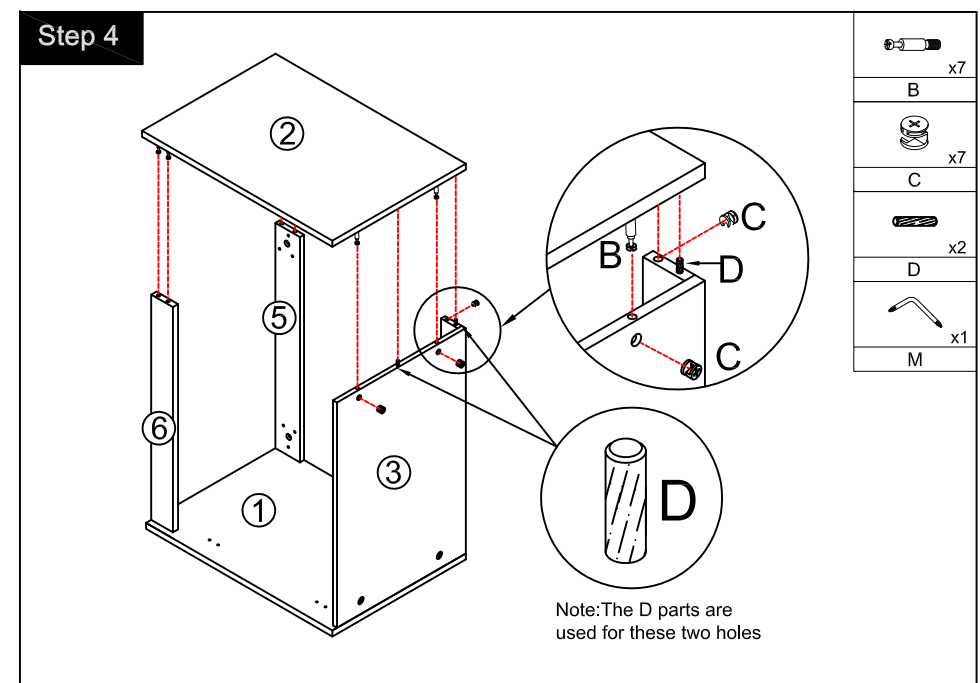
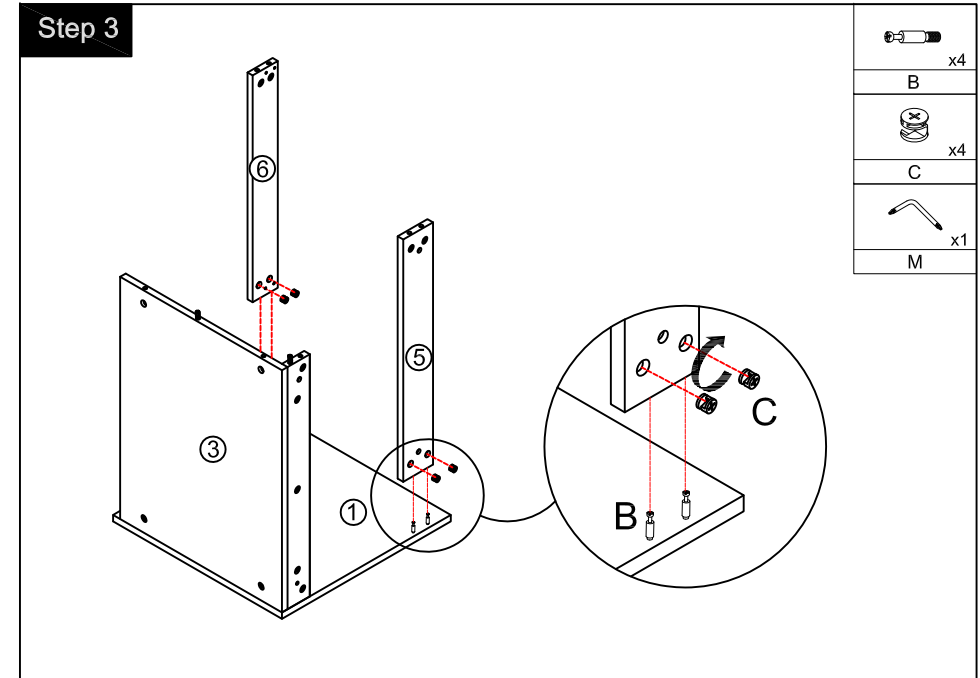
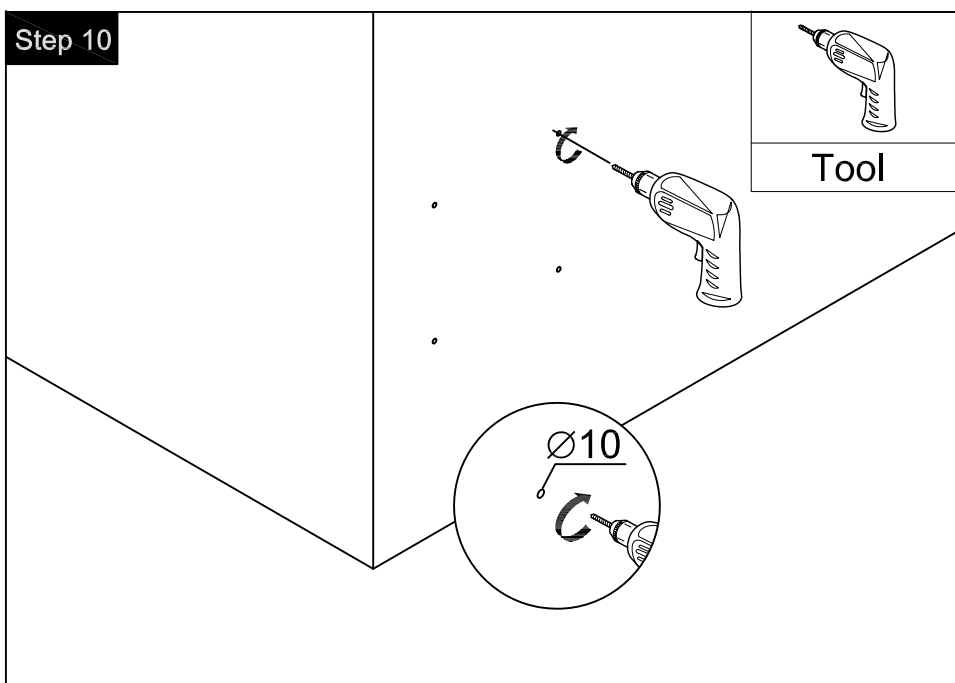
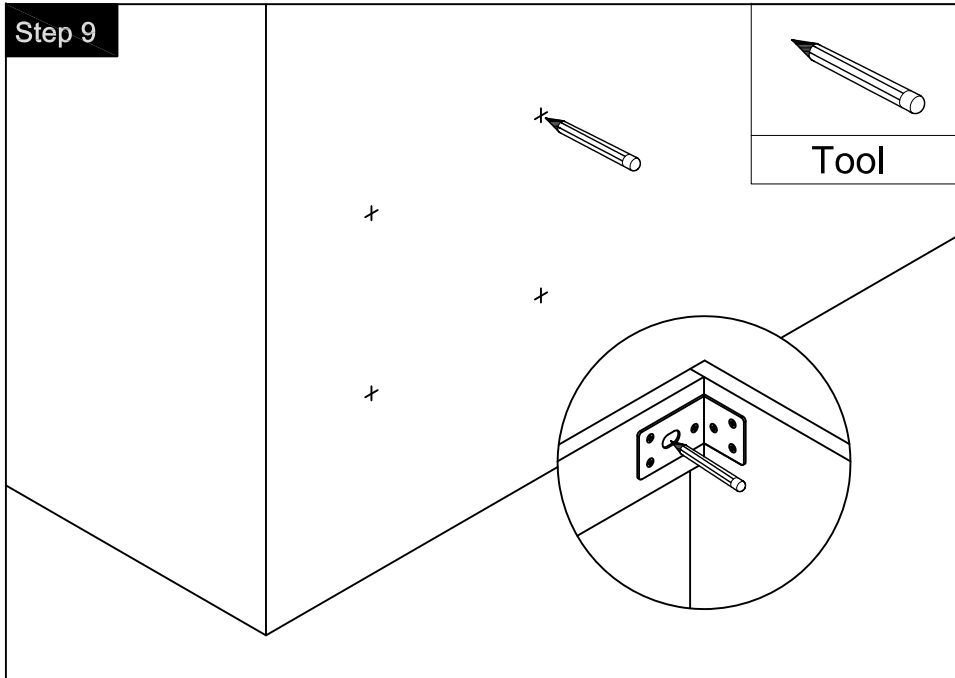
-  x4
- 
- 
- 



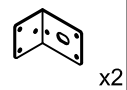
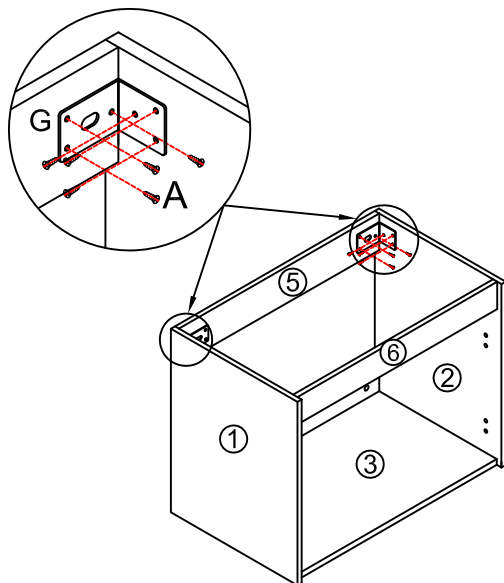
Step 12

-  x4
- 
- 
- 





Step 5



x2

G

($\varnothing 4 \times 14\text{mm}$)



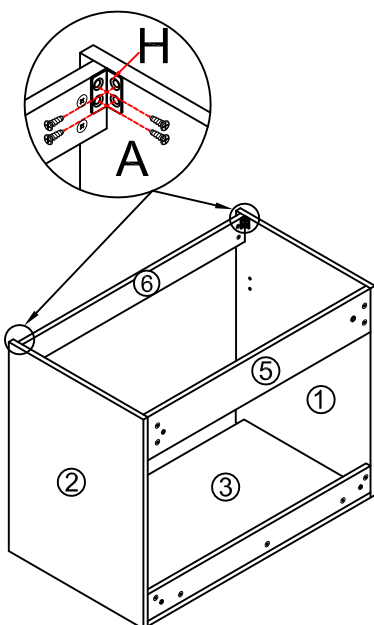
x12

A



Tool

Step 6



x2

H

($\varnothing 4 \times 14\text{mm}$)



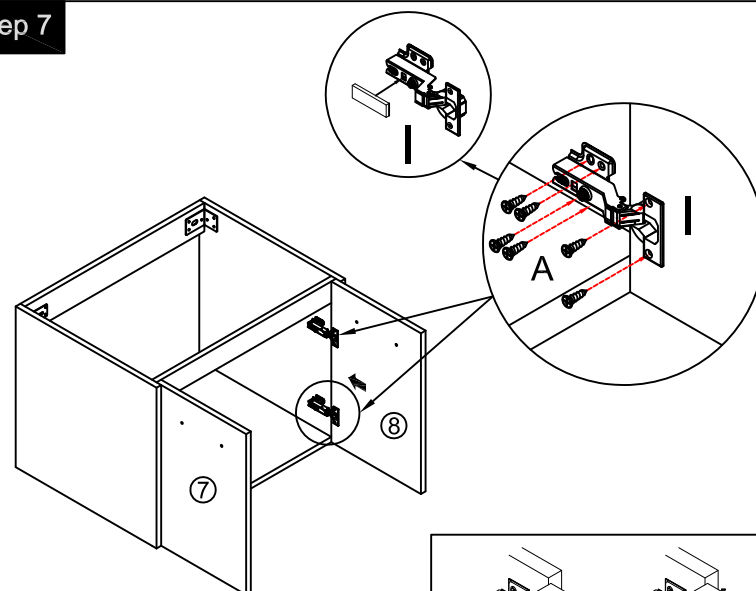
x8

A



Tool

Step 7



x4

($\varnothing 4 \times 14\text{mm}$)



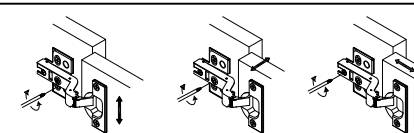
x24

A

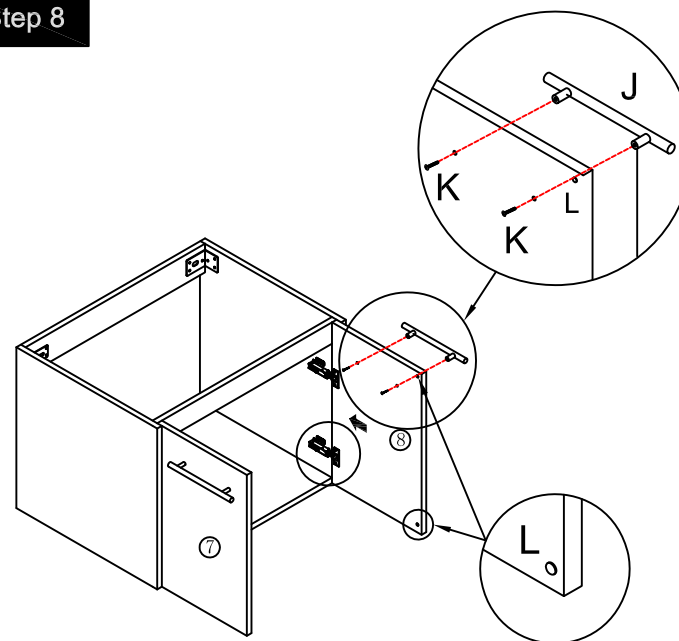


Tool

You can adjust the doors by tightening or loosening the screws on the hinge. →



Step 8



x2

J

(M4 x 20mm)



x4

K



x4

L



M