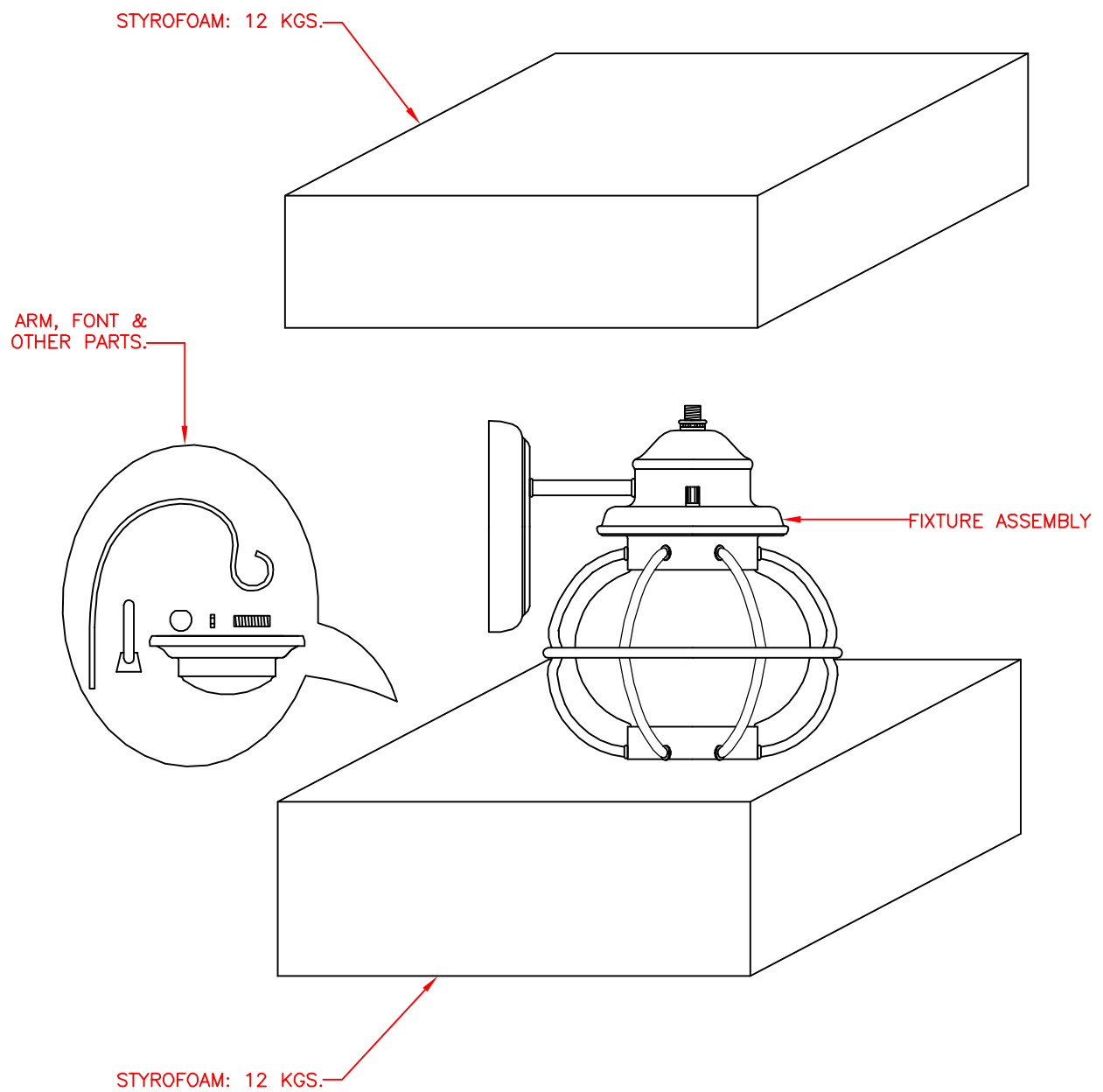
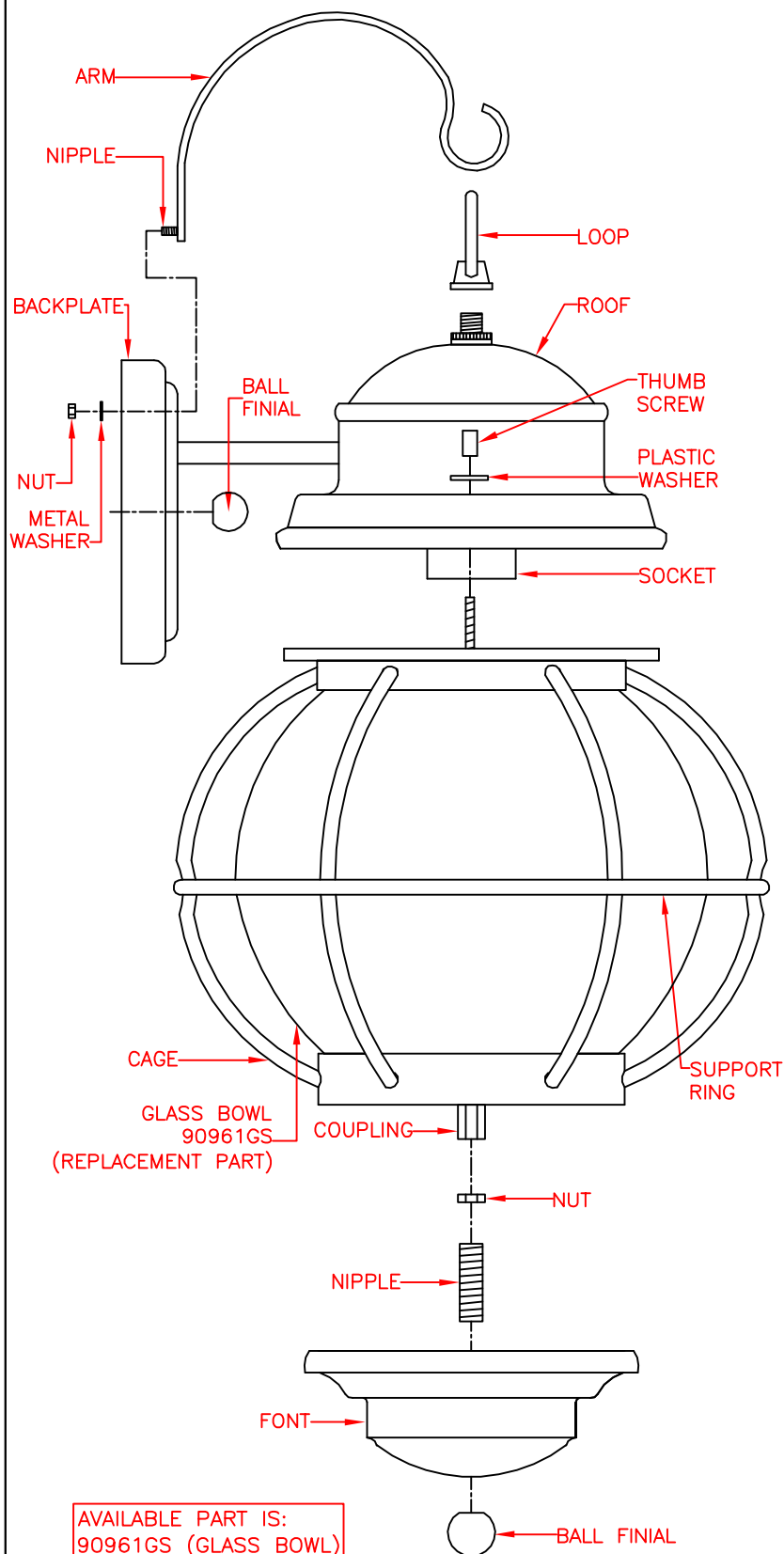


MODEL: 90961
PACKING DIAGRAM





AVAILABLE PART IS:
90961GS (GLASS BOWL)

MODEL: 90961

ASSEMBLY INSTRUCTIONS

READ AND SAVE THESE INSTRUCTIONS

READ INSTRUCTIONS ALL THE WAY THROUGH PRIOR TO ASSEMBLY.

THIS LANTERN SHOULD TAKE APPROXIMATELY 15 MINUTES TO ASSEMBLE.

MAKE SURE ALL PARTS ARE FIRMLY TIGHTENED.

TOOLS

YOU WILL NEED THE FOLLOWING TOOLS OR EQUIPMENT: SCREWDRIVER, ADJUSTABLE WRENCH, WIRE CUTTERS, PLIERS.

UNPACK THE FIXTURE

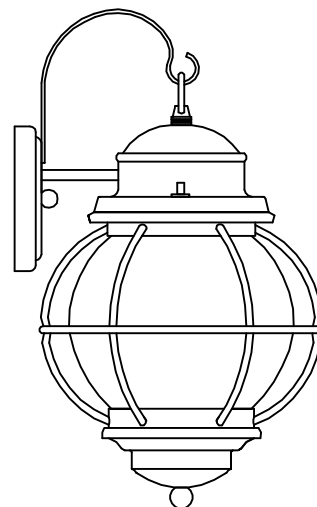
TO PROTECT THE FINISH, PLACE ALL PARTS ON A SOFT SURFACE. YOU SHOULD HAVE RECEIVED THE FOLLOWING: FIXTURE ASSEMBLY, ARM, LOOP, METAL WASHER, (2) NUTS, NIPPLE, FONT AND BALL FINIAL.

MOUNTING HARDWARE PACKAGE:

NIPPLE, CROSSBAR, GREEN GROUND SCREW, (3) WIRE CONNECTORS, (2) 8-32 x 1-1/4" SCREWS, NUT AND BALL FINIAL.

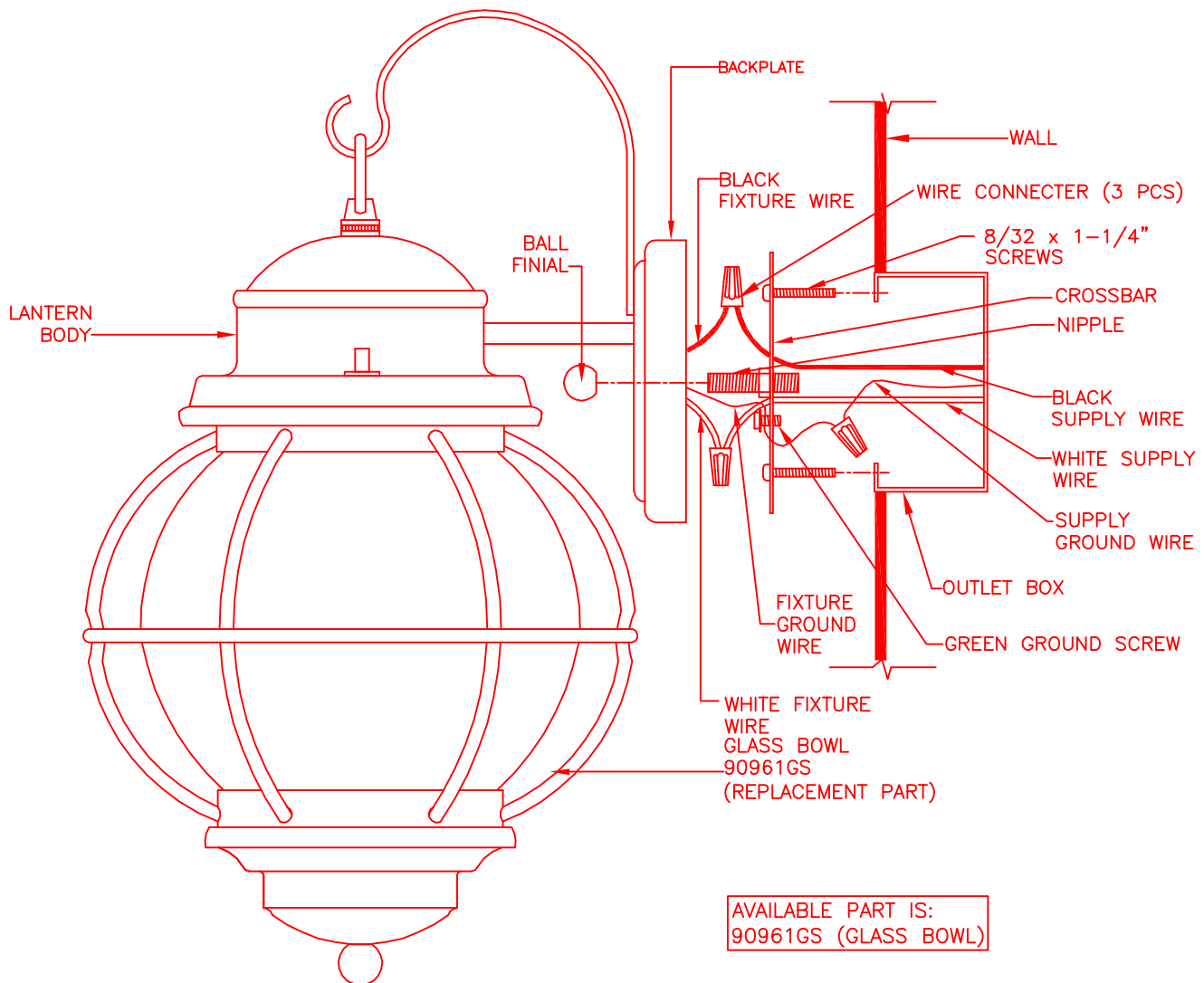
FIXTURE ASSEMBLY

1. REMOVE LANTERN BODY FROM ROOF BY UNSCREWING (2) THUMB SCREWS.
2. SCREW LOOP TO TOP OF ROOF.
3. SECURE ARM TO BACKPLATE WITH A METAL WASHER AND A NUT FROM BACK OF BACKPLATE.
4. PRIOR TO INSTALLING THE BULB, PLEASE INSPECT SOCKET FOR SILICA PACKET. IF PACKET IS PRESENT, REMOVE AND THROW AWAY. DO NOT EXPOSE TO CHILDREN AND PETS.
5. INSTALL A 100 WATT MAX. MEDIUM BASE TYPE "A" BULB (NOT INCLUDED) INTO SOCKET.
6. REPLACE LANTERN BODY TO BOTTOM OF ROOF, THEN SECURE WITH (2) PLASTIC WASHERS AND (2) THUMB SCREWS REMOVED ABOVE.
7. SCREW NIPPLE INTO COUPLING AND SECURE WITH A NUT.
8. SLIDE FONT OVER THE NIPPLE AND SECURE WITH A BALL FINIAL.
9. COMPLETE INSTALLATION INSTRUCTIONS ON NEXT PAGE.



LANTERN ASSEMBLED VIEW





AVAILABLE PART IS:
90961GS (GLASS BOWL)

INSTALLATION INSTRUCTIONS

READ AND SAVE THESE INSTRUCTIONS

CAUTION: TO AVOID POSSIBLE ELECTRIC SHOCK, MAKE SURE THE ELECTRICITY IS SHUT OFF AT THE MAIN PANEL. IF YOU ARE REPLACING AN EXISTING FIXTURE, FIRSTLY, TURN THE FIXTURE OFF. NEXT, TURN THE WALL SWITCH OFF. FINALLY, GO TO THE MAIN FUSE OR BREAKER BOX IN YOUR HOME. TURN THE FUSE OR BREAKER TO THE OFF POSITION. SOME TYPES OF FUSES MUST BE UNSCREWED TO SHUT OFF THE POWER.

* ALL WIRING MUST BE DONE IN ACCORDANCE WITH NATIONAL AND LOCAL ELECTRIC CODES.

** IF YOU DO NOT HAVE ELECTRICAL WIRING EXPERIENCE, HAVE YOUR FIXTURE INSTALLED BY A QUALIFIED LICENSED ELECTRICIAN.

*** THIS FIXTURE IS TO BE MOUNTED TO A UL LISTED OUTLET BOX CAPABLE OF SUPPORTING THE WEIGHT OF THIS FIXTURE. THE OUTLET BOX MUST BE DIRECTLY SUPPORTED BY THE BUILDING STRUCTURE.

* COMPLETE FIXTURE ASSEMBLY INSTRUCTIONS FIRST. (SEE PREVIOUS PAGE).

1. ATTACH CROSSBAR TO OUTLET BOX USING TWO SCREWS PROVIDED WITH THE OUTLET BOX. (NOTE: IF THE SCREWS WITH THE OUTLET BOX ARE TOO SHORT, USE THE (2) 8-32 x 1-1/4" SCREWS PROVIDED IN THE MOUNTING HARDWARE PACKAGE).

2. CONNECT THE WHITE OR RIBBED FIXTURE WIRE TO THE WHITE SUPPLY WIRE IN THE OUTLET BOX USING THE TWIST-ON WIRE CONNECTOR PROVIDED. CONNECT THE BLACK OR SMOOTH FIXTURE WIRE TO THE BLACK SUPPLY WIRE IN THE SAME MANNER. INSTALL THE FIXTURE GROUND WIRE UNDER THE GREEN GROUND SCREW ON THE CROSSBAR THEN CONNECT THE FIXTURE GROUND WIRE TO THE SUPPLY GROUND WIRE IN THE OUTLET BOX USING THE TWIST-ON WIRE CONNECTOR PROVIDED.

3. RAISE FIXTURE TO THE WALL AND CAREFULLY TUCK THE WIRES INSIDE THE OUTLET BOX. SPREAD THE ELECTRICAL SPLICES SO THAT THE BLACK WIRES ARE ON ONE SIDE OF THE OUTLET BOX AND THE WHITE WIRES ARE ON THE OTHER SIDE. LINE UP NIPPLE WITH HOLE IN CENTER OF BACKPLATE AND SECURE WITH A BALL FINIAL.

4. RESTORE POWER, YOUR NEW LANTERN IS NOW READY FOR USE.

