

CAMBRIDGE 73" DOUBLE SINK CABINET

ARIEL

A073D

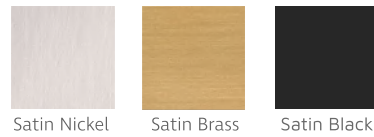
BASE CABINET DIMENSIONS

72" W x 21.5" D x 34.5" H

FEATURES

- Solid wood frame & plywood panels
- Dovetail drawers and joints
- Soft closing doors & drawers

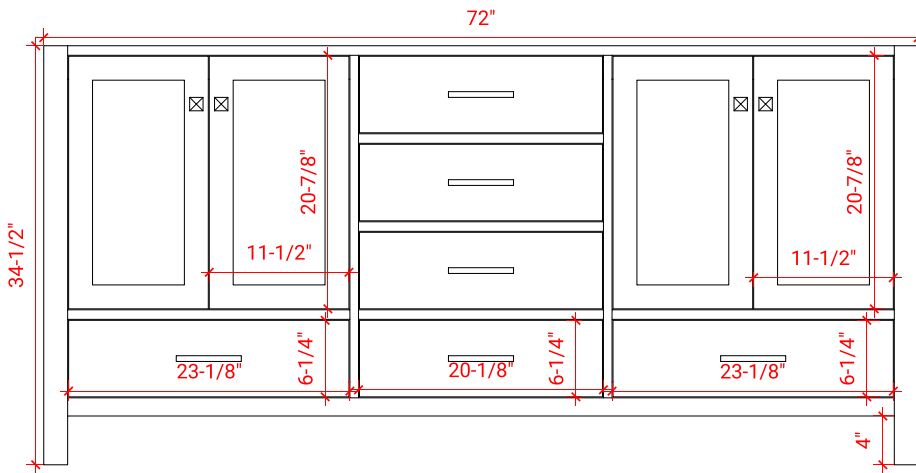
HARDWARE FINISHES



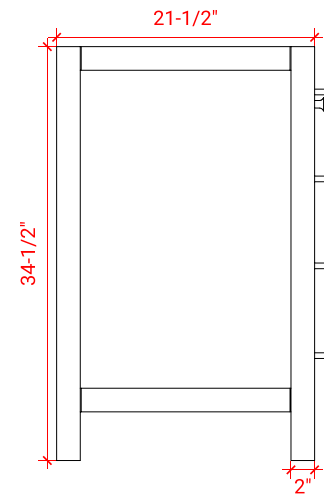
AVAILABLE COLORS



FRONT VIEW



SIDE VIEW



PLAN VIEW

