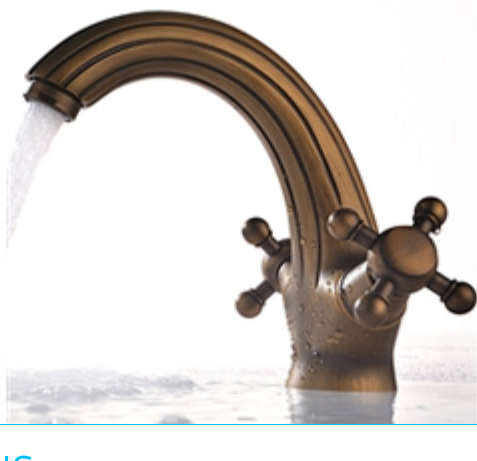
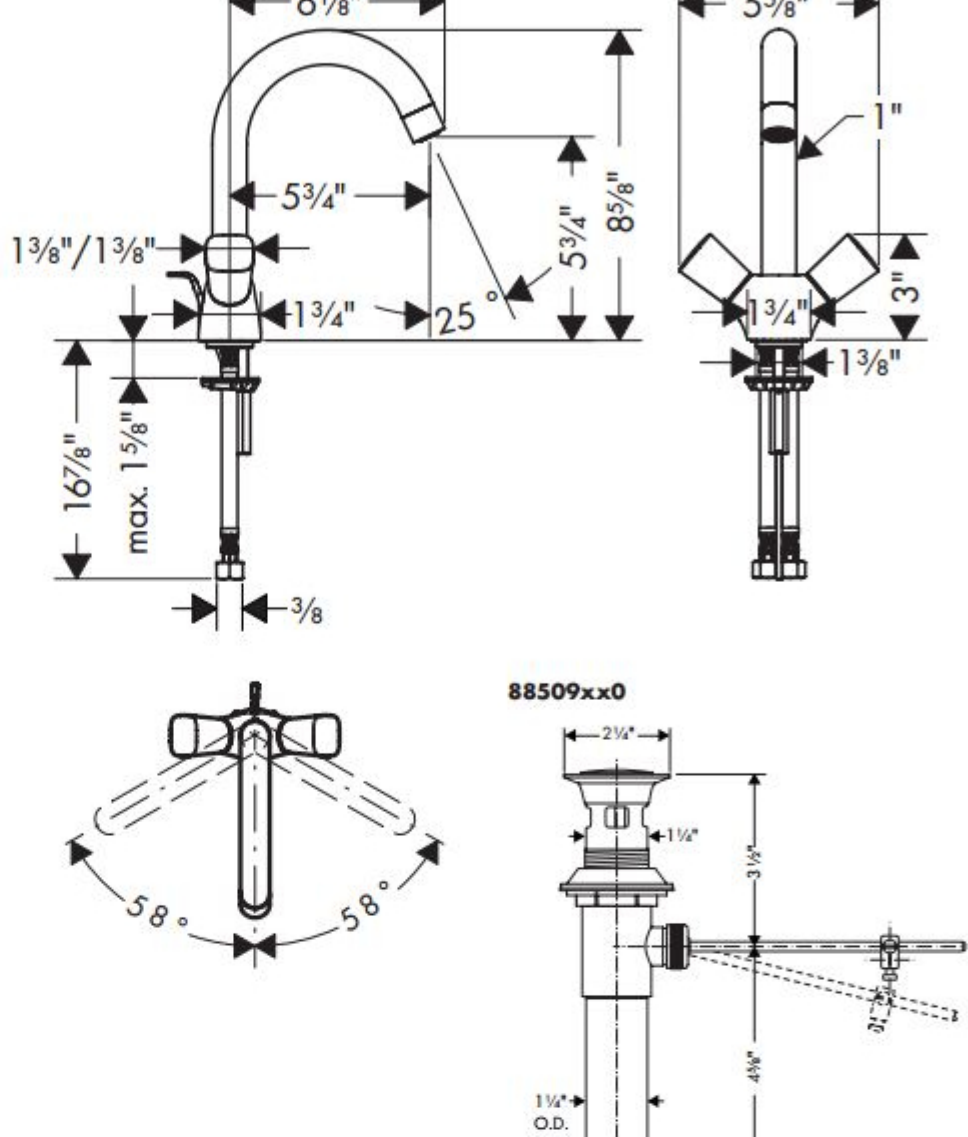
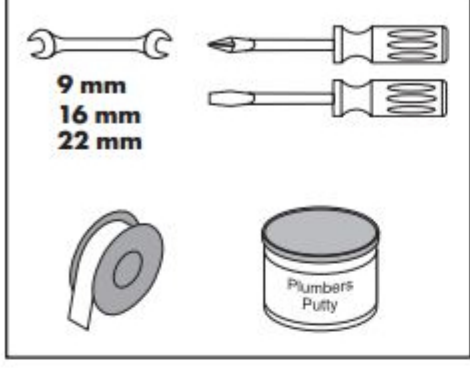


Brio Antique Bronze Bathroom Basin Faucet Roma Style Vintage Solid Brasswith Double Cross Head Handle

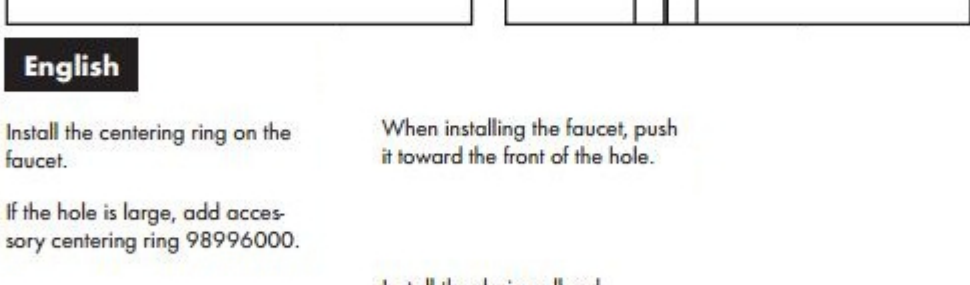
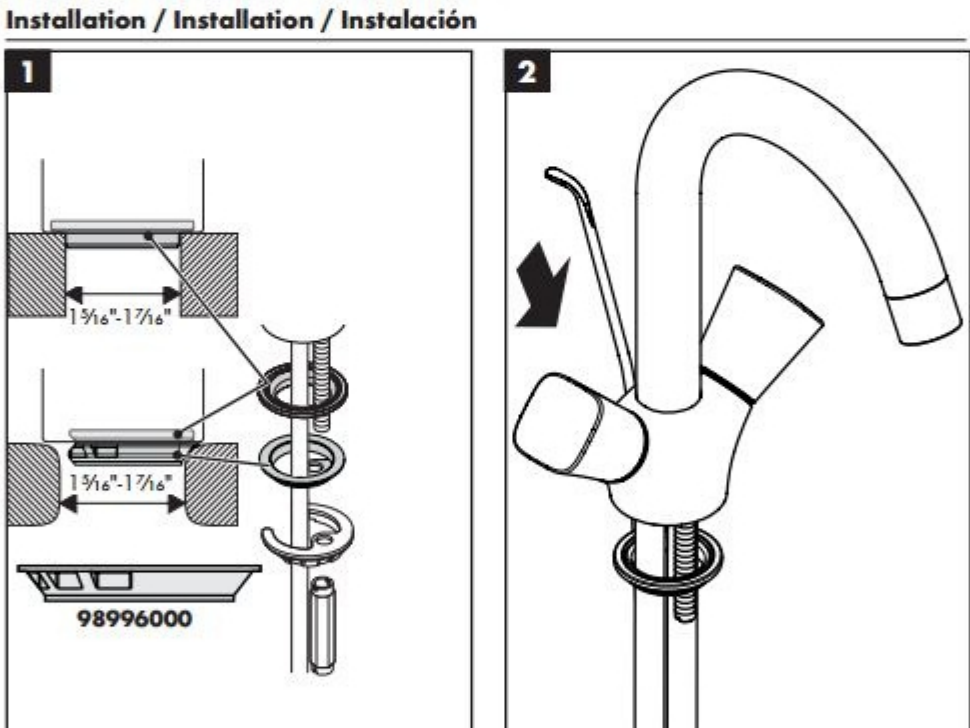


INSTALLATION INSTRUCTIONS

Tools Required / Outils Utiles / Herramientas Útiles



Installation / Installation / Instalación



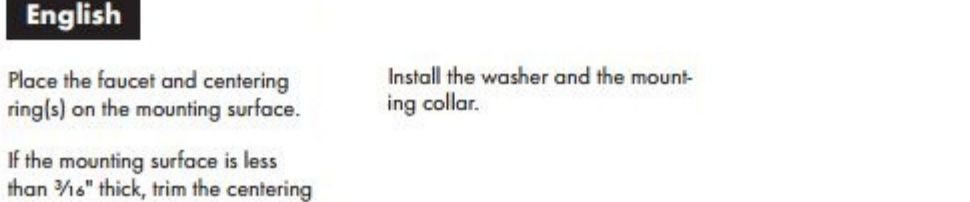
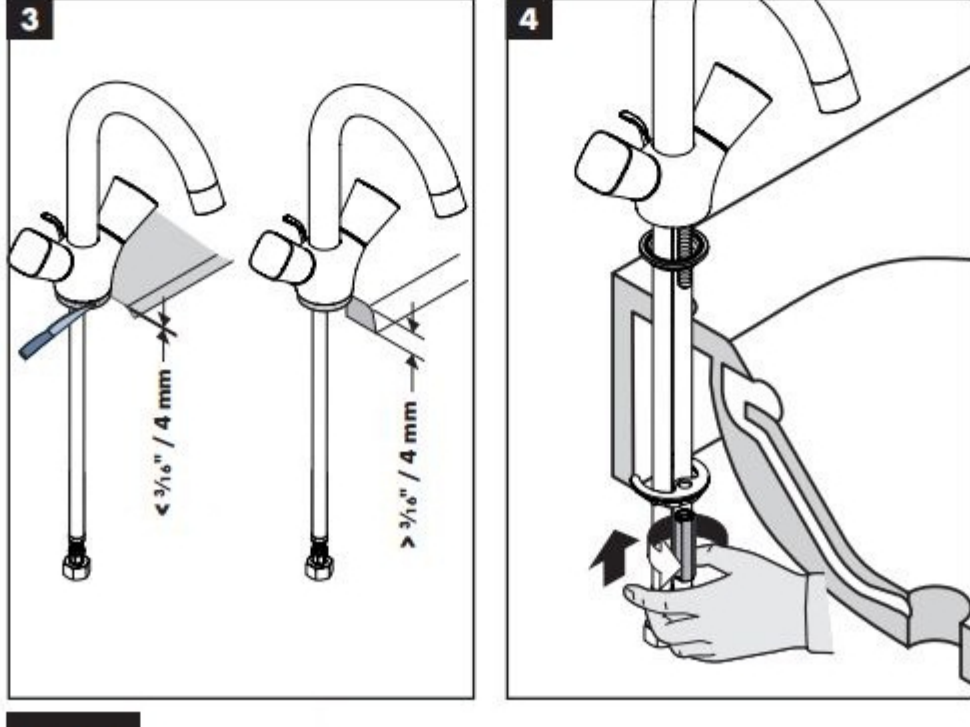
English

Install the centering ring on the faucet.

When installing the faucet, push it toward the front of the hole.

If the hole is large, add accessory centering ring 98996000.

Install the drain pull rod.

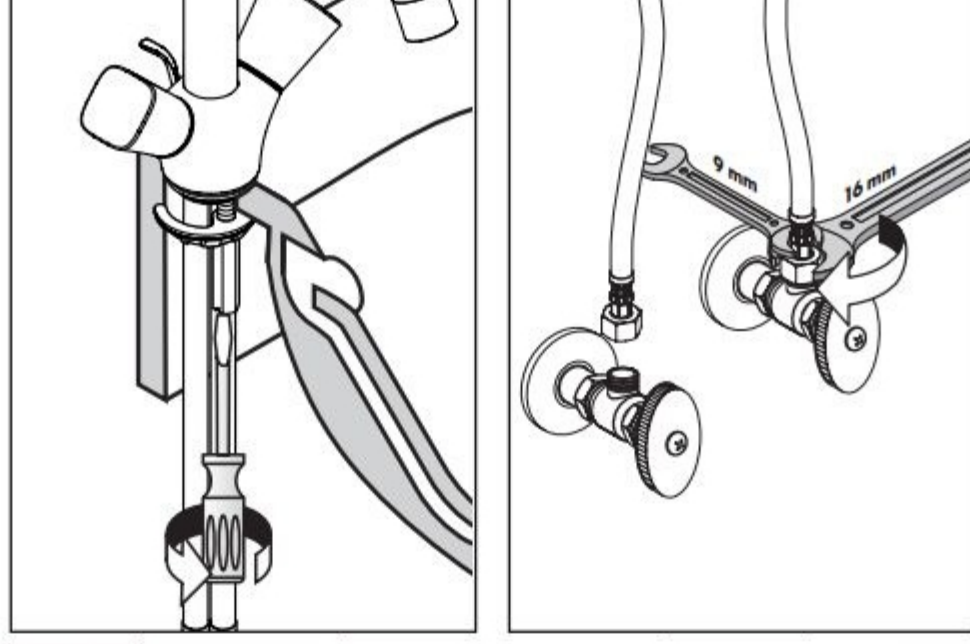


English

Place the faucet and centering ring(s) on the mounting surface.

If the mounting surface is less than 3/16" thick, trim the centering ring.

Install the washer and the mounting collar.

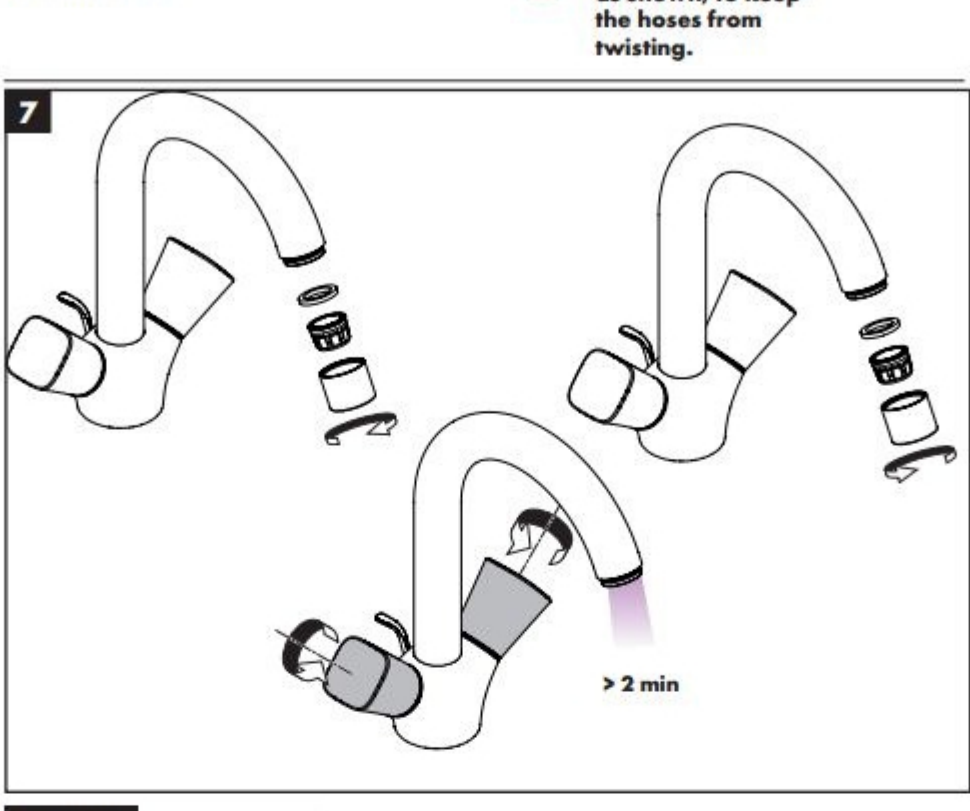


English

Tighten the collar using a flat head screwdriver.

Connect the supply hoses to the stops.

Use two wrenches, as shown, to keep the hoses from twisting.



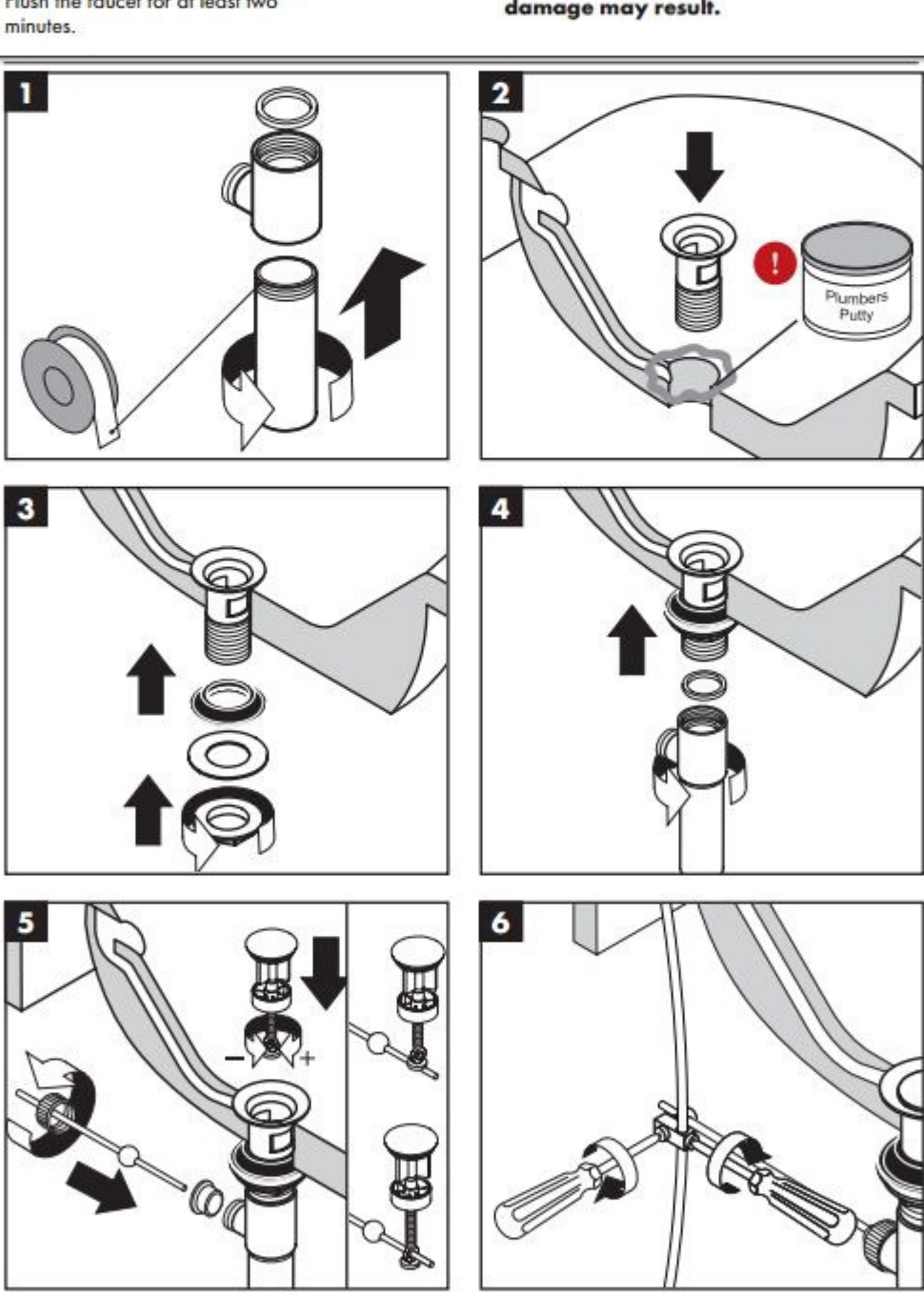
English

Remove the aerator.

Flush the faucet for at least two minutes.

Replace the aerator.

Do not overtighten the aerator, or damage may result.



English

Remove the aerator.

Flush the faucet for at least two minutes.

Replace the aerator.

Do not overtighten the aerator, or damage may result.

Cleaning Recommendation

Modern bathroom faucets, kitchen and shower products are made from different materials to comply with the needs of the market with regard to design and functionality. To avoid damage to the product, it is necessary to take proper care of it.

For best results:

- Prevent the buildup of mineral scale and /or soap residue by cleaning your Hansgrohe product(s) when needed.
- Select a cleaning agent specifically intended for the type of product.
- Do not** use these types of cleaners as they will cause damage to your Hansgrohe product:
 - Any cleaning agent containing hydrochloric acid, formic acid, lye, or acetic acid.
 - Abrasive cleaning powders, pads, or brushes.
 - Steam cleaners.
 - "No rinse" cleaning agents.
- Always** follow the instructions provided by the manufacturer of the cleaning agent.
- Do not** mix cleaning agents, unless directed by the manufacturer.
- Do not** spray cleaners directly onto the product as drops could enter openings and gaps and cause damage. When using spray cleaners, spray the cleaner onto a soft cloth or sponge.
- Always** rinse your Hansgrohe product thoroughly with clear water and polish dry with a soft cloth after cleaning.

Important

- Residue from soaps and shampoos can cause damage. Rinse the product with clean water after each use.
- Residue from basin/tub/tile cleaner can cause damage to faucets and fittings. Immediately rinse any over-spray from the Hansgrohe product.
- Damage to the product caused by improper care or the use of improper cleaning agents is not covered by the warranty.**
- If a component of the product is damaged, replace it, as there is risk of injury.**

This General diagram and installation instructions are not intended for any specific model, but is presented as a general guideline for Installations!