

**Model :** E020641-L

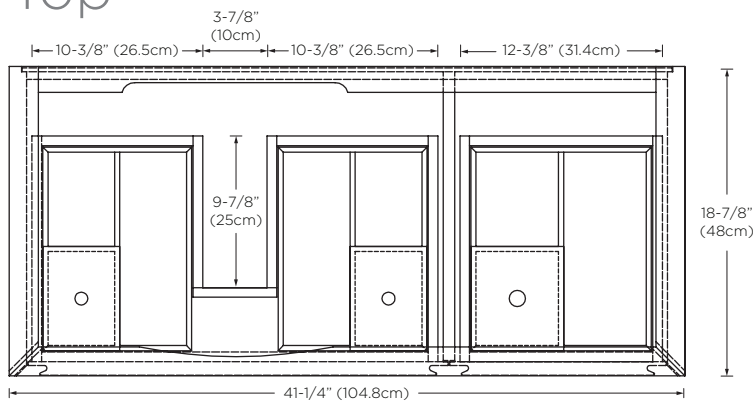
Designed By: **DANELONMERONI** | UNITED KINGDOM

**Features :** Tapered and beveled edge legs  
Solid wood drawer organizers  
Woven fiber drawer liners  
Full-extension, soft-close drawers with Hettich brand hardware  
4 drawers with drawer finger pulls  
Dovetail drawer construction  
Fully finished interior  
Solid wood construction (no MDF)  
Multi-step polyurethane finish resists moisture and scratches  
Leg levelers included  
U.S. PATENT PENDING

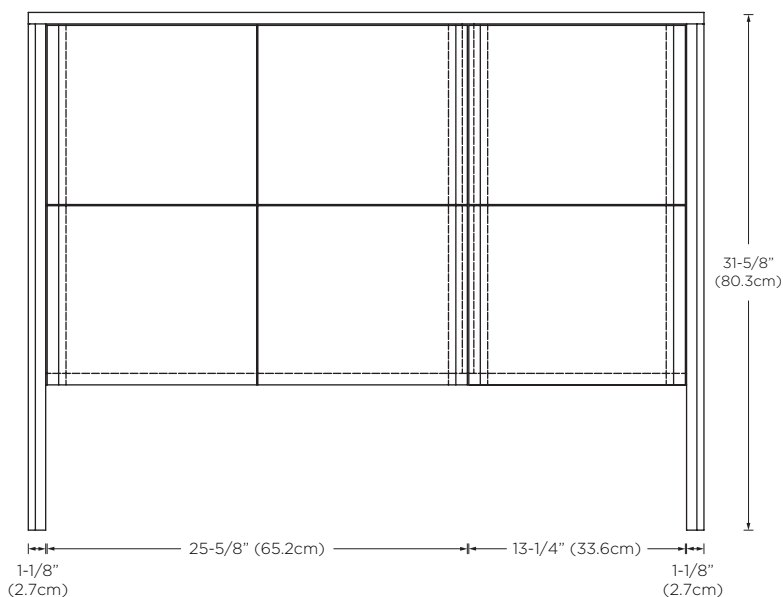
All Ronbow cabinets are made of solid hardwood or hardwood plywood and meet strict CARB II Standards. No particle board or Micro-Density Fiberboard (MDF) are used.

**Available Finish :** Bristol Beige (E40)

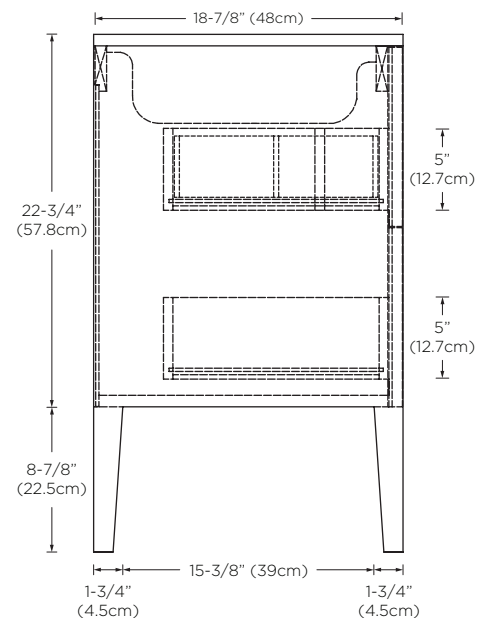
Top



Front



Side



**Model :** E020641-R

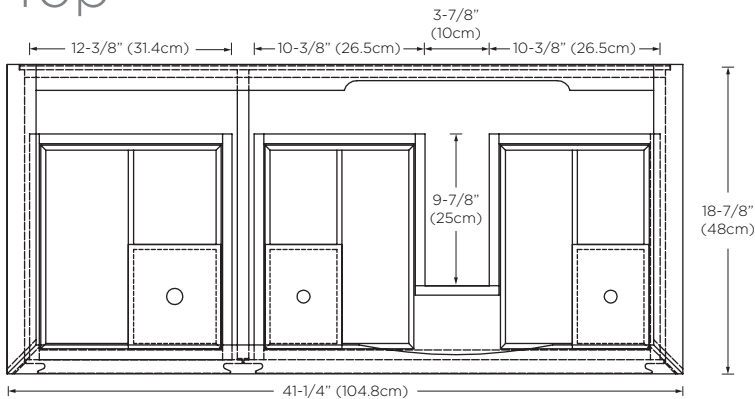
Designed By: **DANELONMERONI** | UNITED KINGDOM

**Features :** Tapered and beveled edge legs  
Solid wood drawer organizers  
Woven fiber drawer liners  
Full-extension, soft-close drawers with Hettich brand hardware  
4 drawers with drawer finger pulls  
Dovetail drawer construction  
Fully finished interior  
Solid wood construction (no MDF)  
Multi-step polyurethane finish resists moisture and scratches  
Leg levelers included  
U.S. PATENT PENDING

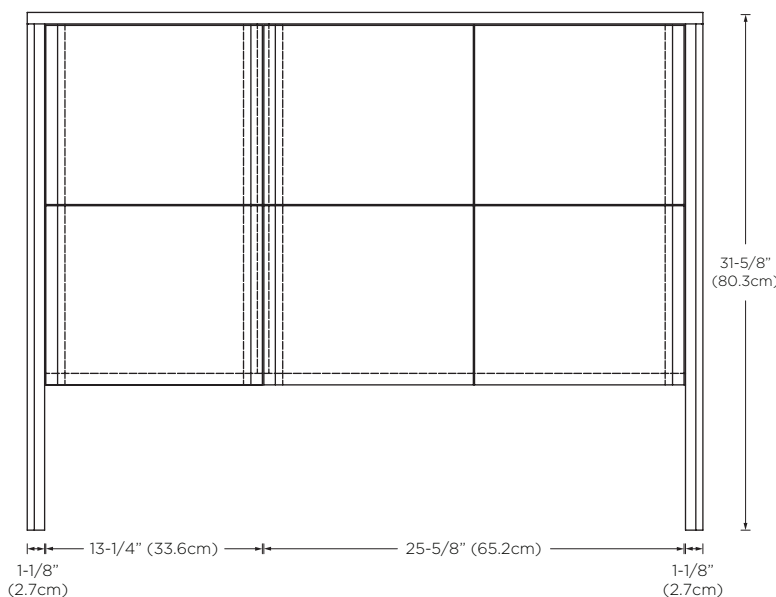
All Ronbow cabinets are made of solid hardwood or hardwood plywood and meet strict CARB II Standards. No particle board or Micro-Density Fiberboard (MDF) are used.

**Available Finish :** Bristol Beige (E40)

Top



Front



Side

