



16 Gauge
1-1/4" Tubing.

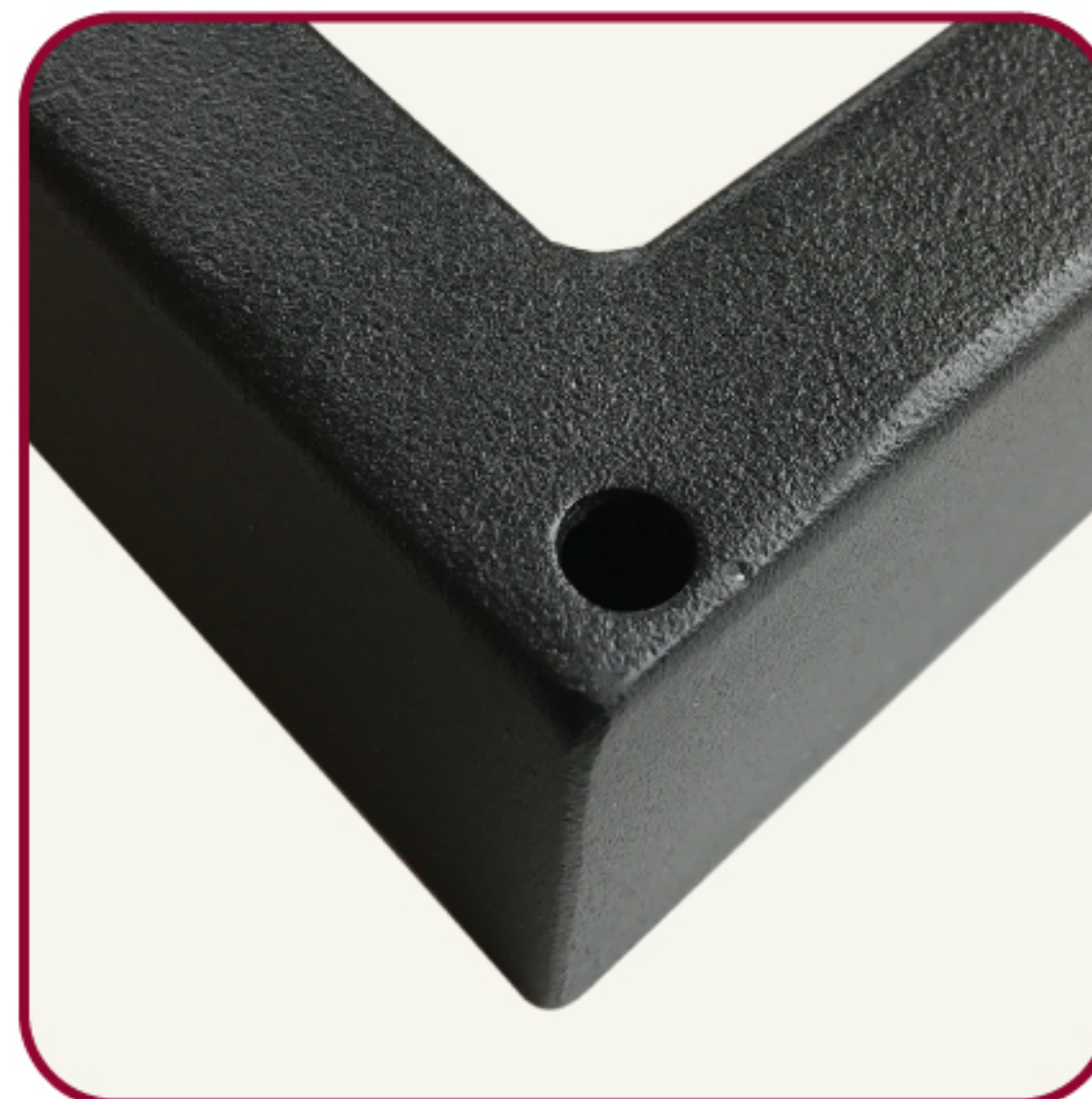


US vs.

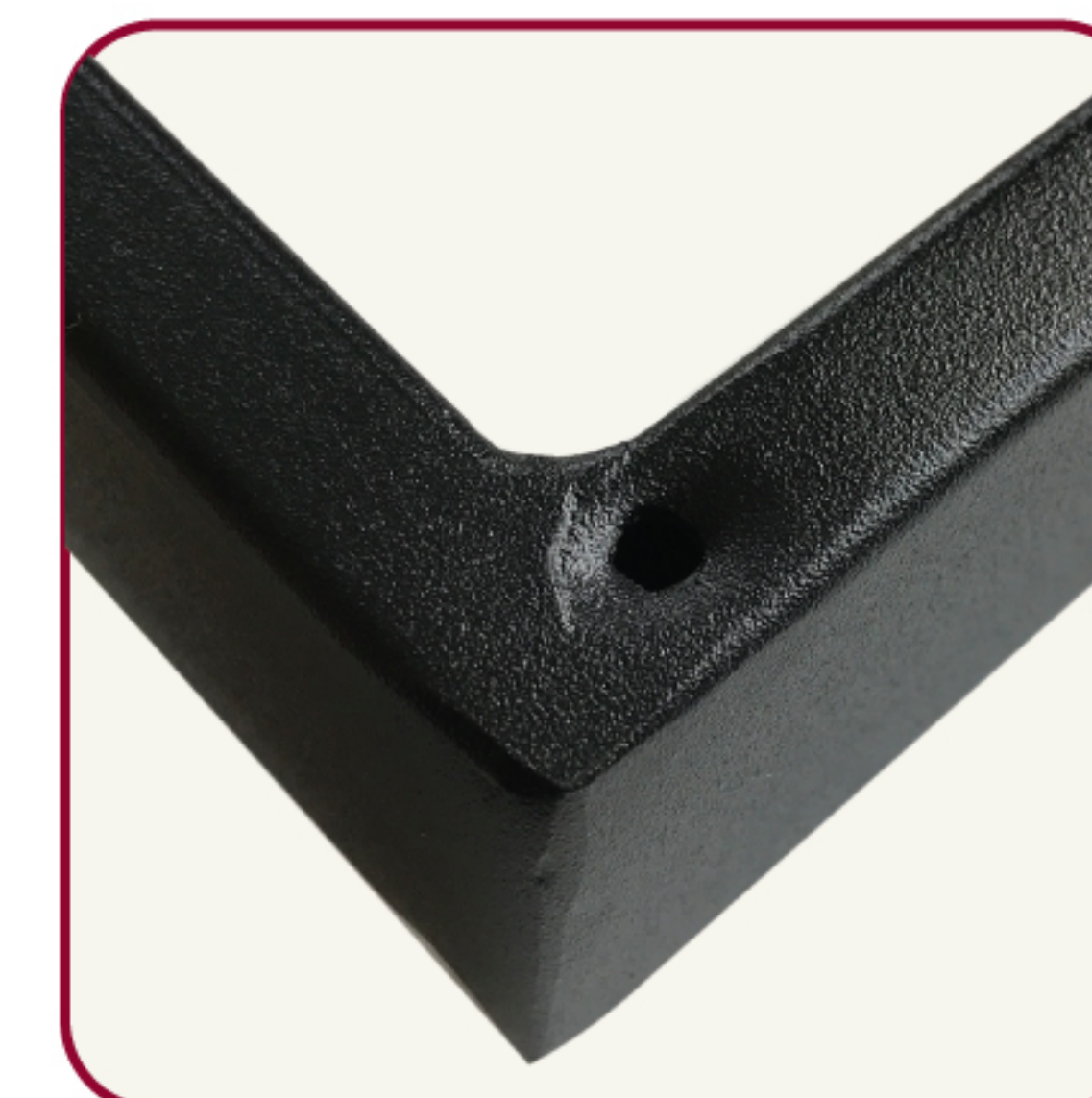


18 Gauge
1-1/8" Tubing.

16 Gauge
1-1/4" Tubing.



US vs.



18 Gauge
1-1/8" Tubing.

Support base
fully welded
(4 sides) to
legs. Full contact
(legs to plate).



US vs.



Support base spot
welded (1 side) to
legs. Partial contact
(legs to plate).

Complete
welded
top & bottom
foot ring to legs.



US vs.



Only a
bottom weld
on foot ring
(to legs)

Brazed joints
(maximum
strength &
visually
appealing.)



US vs.

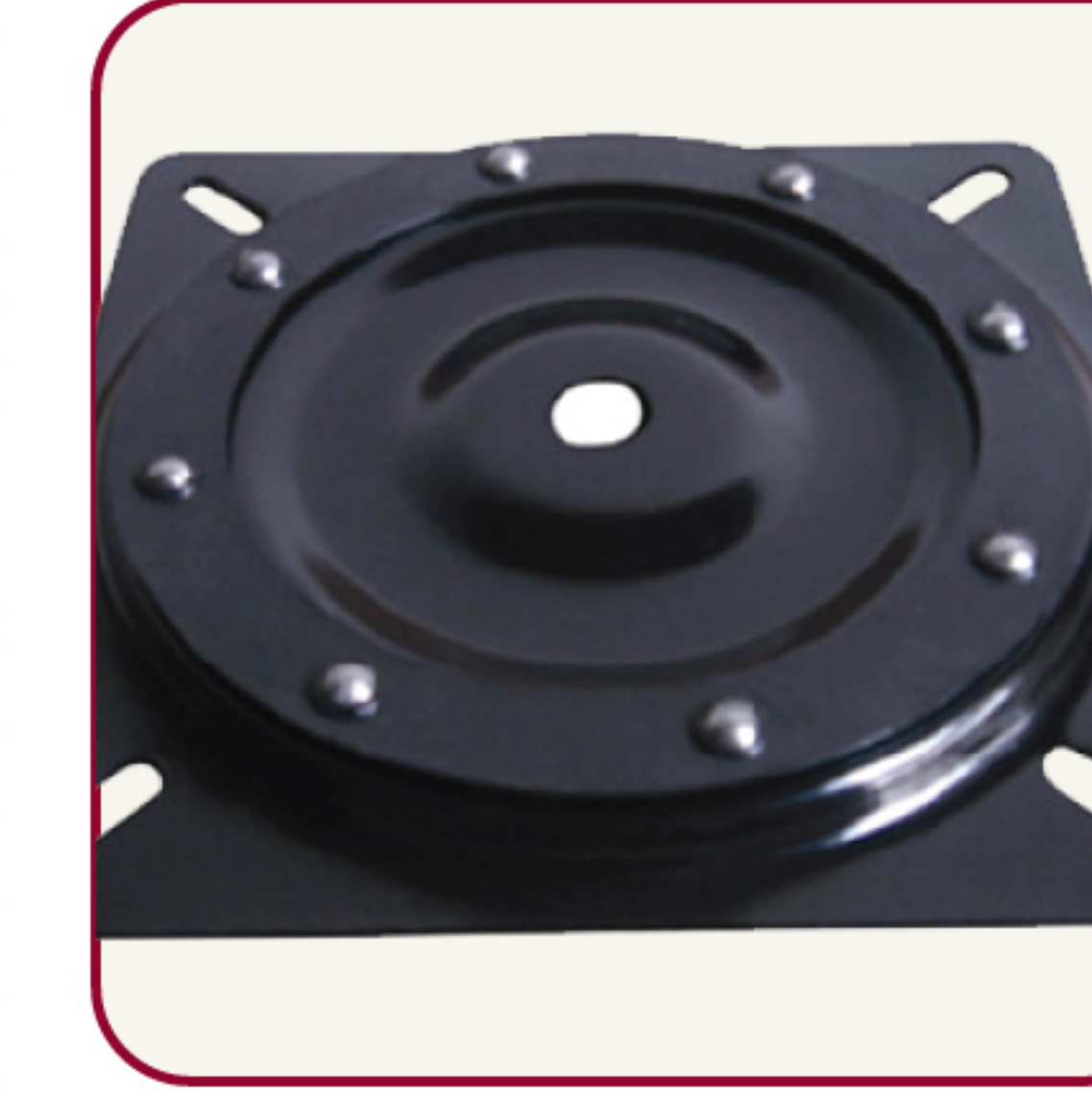


Sloppy
welded joints.

Powder coated
(weather
resistant)
52 stainless ball
bearings (encased)

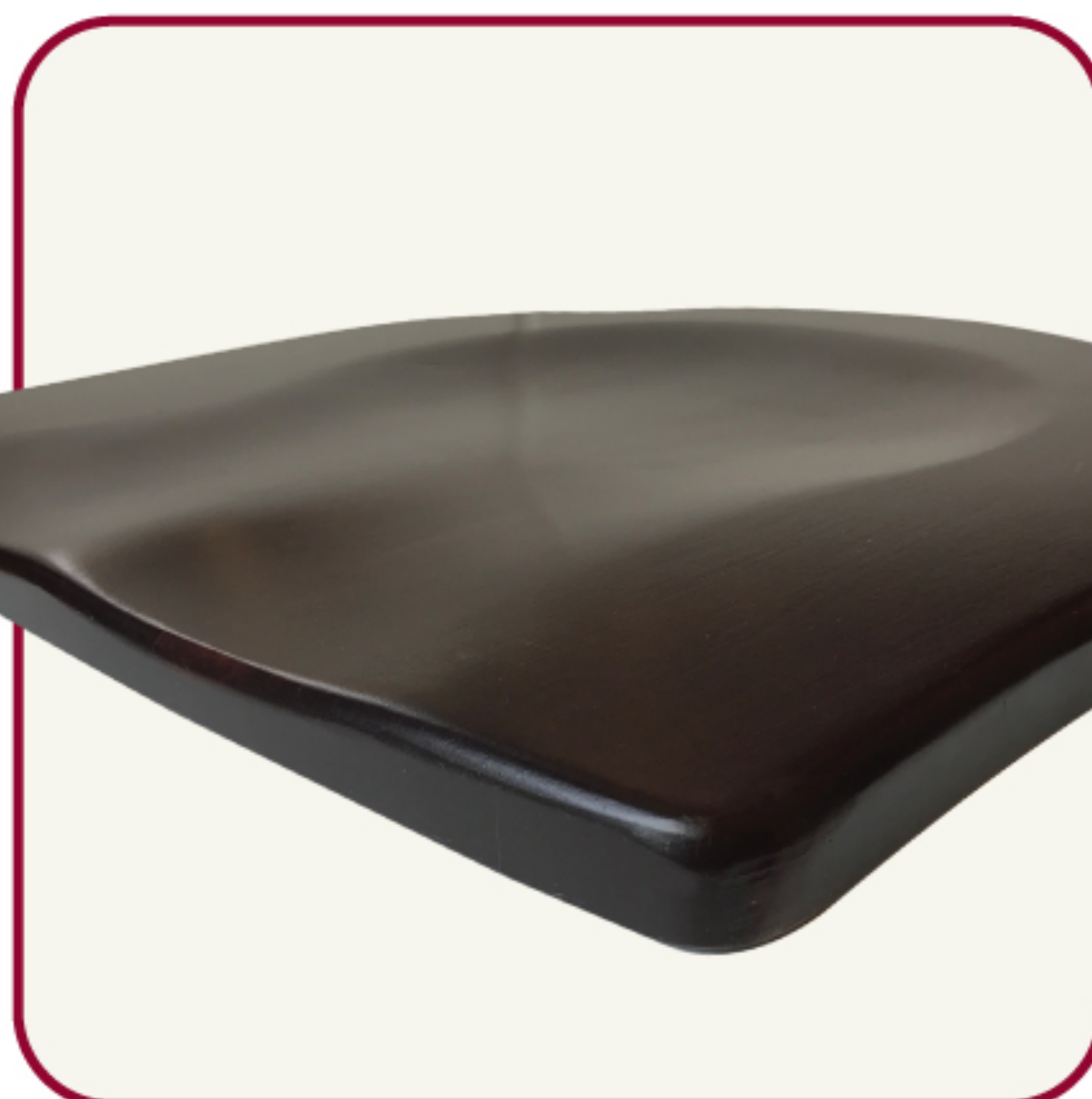


US vs.

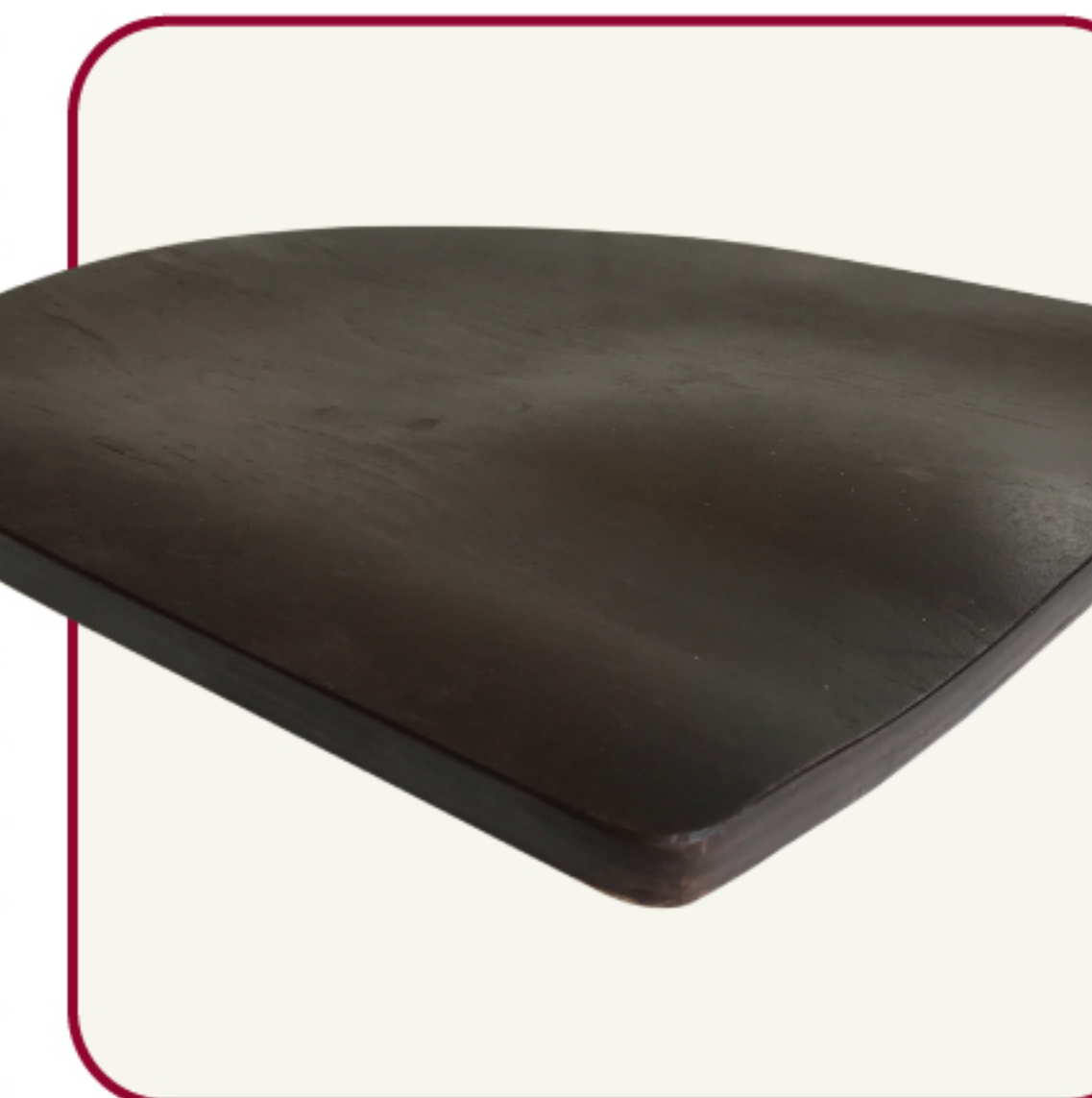


8 non-coated
ball bearings
placed in a chip
board gasket.

1" solid
oak or maple
seats (dished)
for seating
comfort.



US vs.



1/2"
porous plywood.
Minimal dishing
(lack of comfort).