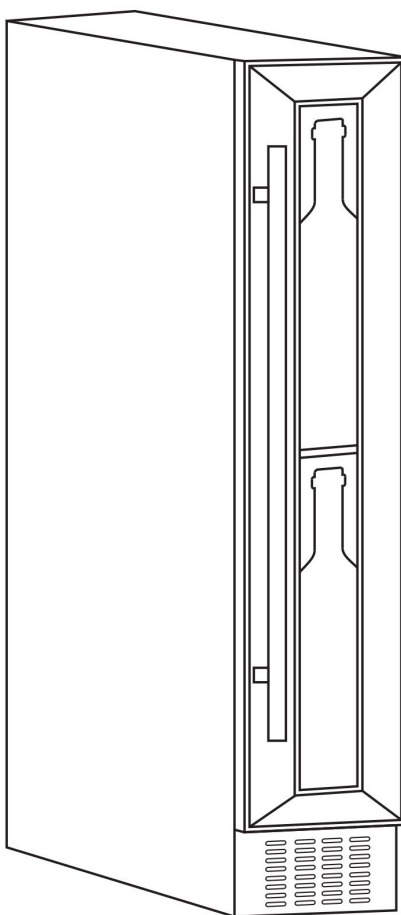




# **Wine Refrigerator**

**Model - WR 009**



## **USER MANUAL**

---

Read the instructions carefully and keep for future reference

## WARRANTY SERVICE

---

This warranty is given by:

**Equator Appliances**  
10216 Georgibelle Drive, Suite 900D  
Houston, TX 77043-5249

### **For Service, Parts and Accessories:**

**Appliance Desk**  
Call 1-800-776-3538  
Email: [service@appliancedesk.com](mailto:service@appliancedesk.com)  
Web: [www.ApplianceDesk.com](http://www.ApplianceDesk.com)  
Business hours: 9:00 am to 5:00 pm weekdays

## GENERAL

---

Since it is responsibility of the consumer - owner to establish the warranty period by verifying the original purchase date, Equator Appliances recommends that a receipt, delivery slip or some other appropriate payment record be kept for that purpose. Remember to send in your Warranty Registration Card so that a proof of your purchase exists with Equator Appliances.

You can also register online at this link **[www.ApplianceDesk.com](http://www.ApplianceDesk.com)**

This warranty gives you specific legal rights, and you may also have other rights which vary from State to state.

*All rights reserved. Manual subject to change without notice.*

## **WARNING**

- To prevent damaging the door gasket, make sure to have the door all the way opened when pulling shelves out of the appliance.
- The appliance must be positioned so that the plug is accessible. Release the electric cord. Move your cabinet to its final location. Do not move your cabinet while loaded with wine, as you might distort its body. The appliance should be installed in a suitable place in order to avoid touching the compressor.
- This appliance is not intended for use by persons (including children) with reduced physical, sensory or mental capabilities or lack of experience and knowledge, unless they have been given supervision or instruction concerning use of the appliance by a person responsible for their safety.
- If the supply cord is damaged, it must be replaced by the manufacturer or their service agent or a similarly qualified person in order to avoid a hazard.

## **IMPORTANT SAFETY INSTRUCTIONS**

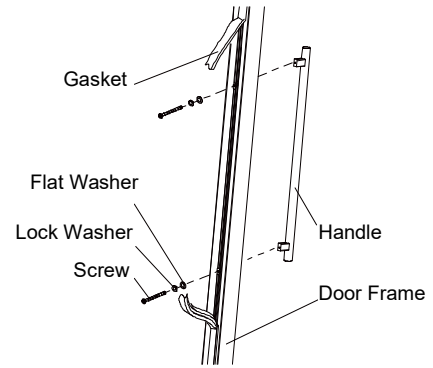
<b>⚡WARNING⚡</b>	To reduce the risk of fire, electrical shock, or injury when using your appliance, follow these basic precautions.
<p>Read all instructions before using the appliance.</p> <p><b>DANGER or WARNING: Risk of child entrapment and suffocation</b> Never allow children to operate, play with, or crawl inside the appliance. Junked or abandoned appliances are still dangerous even if they will “just sit in the garage a few days”.</p> <p><b>Before you throw away your old appliance:</b> Take off the door. Leave the shelves in place so that children may not easily climb inside.</p> <p>Never clean appliance parts with flammable fluids. The fumes can create a fire hazard or explosion.</p> <p>Do not store or use gasoline or any other flammable vapors and liquids in the vicinity of this or any other appliance. The fumes can create a fire hazard or explosion. Do not store explosive substances such as aerosol cans with a flammable propellant in this appliance.</p> <p>Keep ventilation openings in the appliance enclosure or in the built-in structure, clear of obstructions.</p> <p>Do not use mechanical devices or other means to accelerate the defrosting process, other than those recommended by the manufacturer.</p> <p>To avoid a hazard due to instability of the appliance, it must be fixed according to the instructions.</p> <p>Do not damage the refrigerant circuit.</p> <p>Do not use electrical appliances inside the food storage compartments of the appliance, unless they are the type recommended by the manufacturer.</p> <p><b>Flammable and explosive articles should not be put in or near the cabinet, to avoid the fire or explosion.</b></p> <p><b>-Save these instructions-</b></p>	

## UNPACKING AND INSTALLING THE DOOR HANDLE

Remove the exterior and interior packing materials.

Install the door handle provided with the appliance by following these steps:

1. Remove the gasket at the inner side of the door to expose the two screw holes.
2. Install the handle tightly with the screws and washers provided.
3. Replace the gasket.



## INSTALLATION INSTRUCTIONS

### ➤ Before Using Your Appliance

- Remove the exterior and interior packing.
- Before connecting the appliance to the power source, let it stand upright for approximately 24 hours.
- This will reduce the possibility of a malfunction in the cooling system from handling during transportation.
- Use a soft cloth to clean the interior surface with lukewarm water.
- This appliance is intended for household use.
- When disposing your appliance, please choose an authorized disposal site.

### Installation of Your Appliance

- This appliance is designed to be freestanding or built-in (fully recessed). (Refer to sticker location at the back of this appliance).
- This appliance is intended to be used exclusively for the storage of wine or beverages.
- Place your appliance on a flat floor that is strong enough to support it when it is fully loaded. To level your appliance, adjust the front leveling legs at the bottom of the appliance.
- This appliance is using flammability refrigerant. So never damage the cooling pipework during the transportation. Locate the appliance away from direct sunlight and sources of heat (stove, heater, radiator, etc.). Direct sunlight may affect the acrylic coating and heat sources may increase electrical consumption. Extreme cold ambient temperatures may also cause the unit not to perform properly.
- Avoid locating the unit in moist areas.
- Plug the appliance into an exclusive, properly installed-grounded wall outlet. Do not cut or remove the third (ground) prong from the power cord under any circumstances. For any questions concerning power and/or grounding consult a certified electrician.

### ➤ Attention

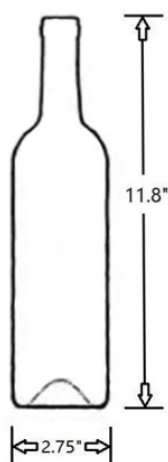
- Do not overload the cabinet
- Do not open the door unless necessary
- Do not cover shelves with aluminum foil or any other shelf material which may prevent air circulation
- If the appliance is not used for long periods, it is suggested to leave the door ajar to allow air to circulate inside the cabinet after a careful cleaning, to avoid condensation, mold or odors.

### ➤ **Ambient Room Temperature Limits**

This appliance is designed to operate in ambient temperatures specified by its temperature class marked on the rating plate.

Class	Symbol	Ambient Temperatures range (°C / °F)
Extended Temperate	SN	+ 10°C/ 50 °F to + 32°C / 89.6°F
Temperate	N	+ 16°C / 60.8°F to + 32°C / 89.6°F
Subtropical	ST	+ 16°C / 60.8°F to + 38°C / 100.4°F
Tropical	T	+ 16°C / 60.8°F to + 43°C / 109.4°F

Standard bottle size:



The stated capacity is dependent on the size and shape of standard Bordeaux 750ml bottle with diameter of 2.75".

When accommodating larger bottles, you can remove shelves. This will reduce the stated bottle capacity.

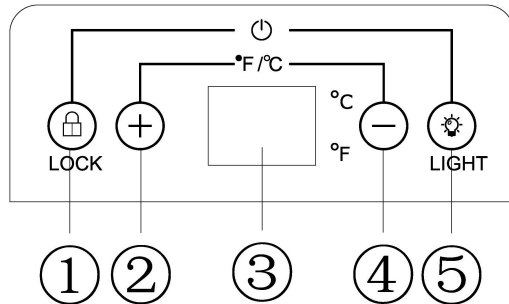
### **WINE STORAGE**

- To prevent damaging the door gasket, make sure to have the door opened fully all the way before pulling the shelves out.
- Please store wine in sealed bottles.
- Recommended Temperatures for chilling/storing your wines.

Red Wines	15-18°C / 59-64.4°F
Dry/White Wines	9-14°C / 48.2-57.2°F
Rose Wines	10-11°C / 50-51.8°F
Sparkling Wines	5-8°C / 41-46.4°F

## OPERATING YOUR APPLIANCE AND SETTING THE TEMPERATURE CONTROL

### ➤ Control System Instruction



1. Lock/Unlock
2. Plus Temp
3. Display Window
4. Minus Temp
5. Light

### POWER ON/OFF CONTROL

When the appliance is plugged into a power outlet, it powers on automatically.

When the appliance is powered on, it will beep indicating that it is self-checking.

Press the lock button (🔒) to unlock the control panel first, then touch (🔒) and (🔒) at the same time, and hold for 3 seconds to turn off (or turn on) the appliance.

To convert celsius to fahrenheit press - and + for 3 to 5 seconds.

### UNLOCKING THE CONTROL PANEL

To unlock the control panel, touch Lock/Unlock button and hold for 3 seconds until a buzz sound is heard. The control panel will be automatically locked after 15 seconds of inactivity. Under the locked condition, the control panel will not operate for Light On/Off and Temperature Setting.

### INTERIOR LIGHTING ON/OFF CONTROL

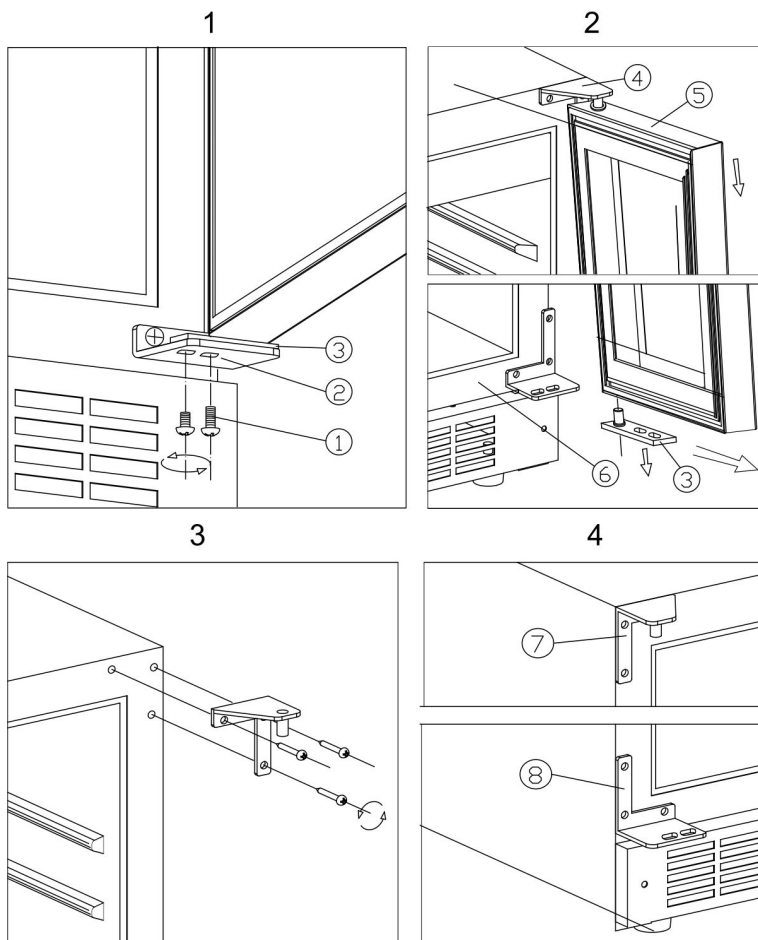
Under the unlocked condition, touch the light button (💡) to turn on (or turn off) the interior cool LED lighting. The light will stay on until it is manually turned off.

### ➤ **Attention**

**If the unit is unplugged, power lost, or turned off, you must wait 3 to 5 minutes before restarting the unit. If you attempt to restart before this time delay, the appliance will not start.**

➤ **Reverse the door with visible hinge**

This appliance has the capability of the door opening from either the left or right side. The unit is delivered to you with the door opening from the left side. Should you desire to reverse the opening direction, please follow the below instruction.



- |                     |                       |             |
|---------------------|-----------------------|-------------|
| ① Lock screws       | ② Lower hinge (right) | ③ Door axis |
| ④ Top hinge (right) | ⑤ Door                | ⑥ Cabinet   |
| ⑦ Top hinge (left)  | ⑧ Lower hinge (left)  |             |

Unscrew the Lock screws ① (Fig. 1)

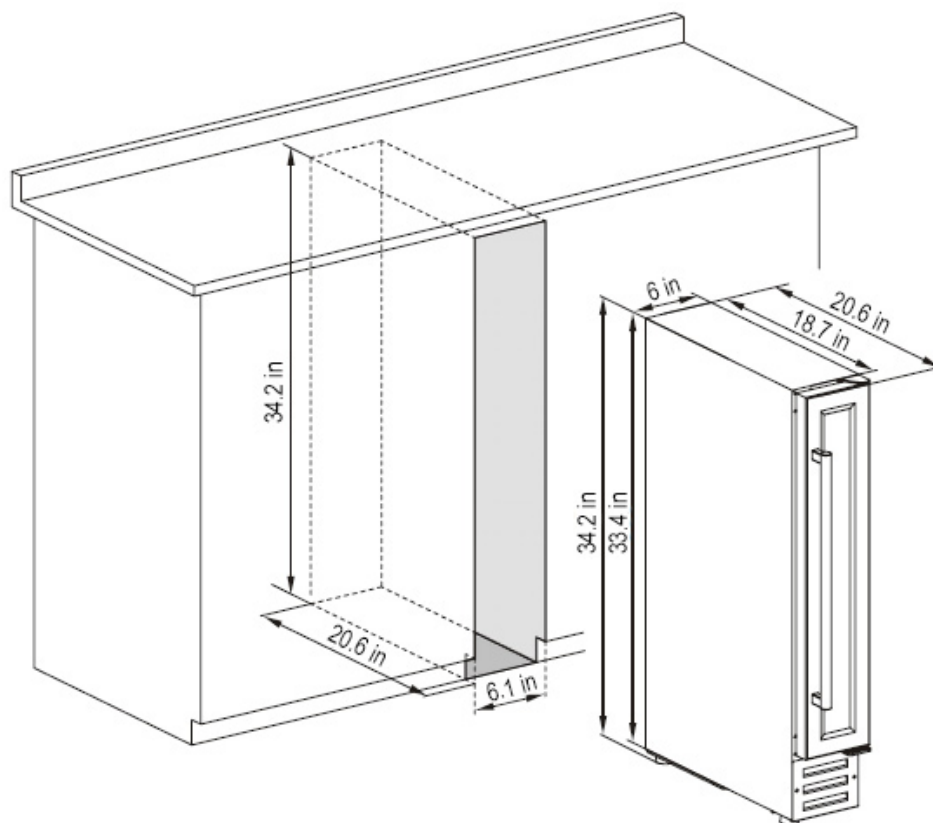
Pull the door ⑤ outward and take it out (Fig. 2)

Screw off 3 bolts and take out the Top hinge (right) ④ (Fig. 3)

Fix the Top hinge (left) and Lower hinge (left) with bolts, in the position as shown (Fig. 4)

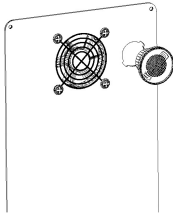
Rotate the door 180 degrees and reinstall the door in the reversed position. (Fig. 4)

## ➤ Built-in Installation



## CHARCOAL FILTRATION SYSTEM

To preserve the quality and taste of your fine wines, they must be stored at the ideal temperature and ambient conditions. Your appliance is equipped with an active charcoal filtration system to ensure air purity, cooling efficiency, and to maintain an odor free cabinet for the storage of your fine wines. The filter assembly is located at the rear panel inside your appliance. The filter must be changed every 12 months. To replace your filter:

1	Remove the bottles.	 <p>Turn left to remove filter.</p>
2	Remove the shelves and set aside to be replaced once you have changed the filter.	
3	Hold the filter and turn it 45 degrees in the counter clockwise direction and then pull it out.	
4	Remove the existing filter and replace with a new one.	
5	Put the new filter into the hole and then turn the filter at 45 degrees in clockwise direction.	



## CARE & MAINTENANCE

### ➤ **Clean your Appliance**

Turn off the power, unplug the appliance, and remove all items including shelves and rack.

Wash the inside surfaces with a warm water and mild solution.

Wash the shelves with a mild detergent solution.

Use a dry cloth when cleaning area of the controls, or any electrical parts.

Wash the outside cabinet with warm water and mild liquid detergent. Rinse well and wipe dry with a clean soft cloth.

### ➤ **Power failure**

Most power failures are corrected within a few hours and should not affect the temperature of your appliance if you minimize the number of times the door is opened. If the power is going to be off for a long period of time, you need to take the proper steps to protect your contents.

### ➤ **Vacation Time**

Short vacations: Leave the appliance operating during vacations of less than three weeks.

If the appliance will not be used for several months, remove all items and turn off the appliance. Clean and dry the interior thoroughly. To prevent odor and mold growth, leave the door open slightly, blocking it open if necessary.

### ➤ **Moving your Appliance**

Remove all items.

Take out the loose items inside the appliance (such as shelf) or fix the loose items with the foam.

Turn the adjustable legs up to the base to avoid damage.

Tape the door shut.


Be sure the appliance stays secure in the upright position during transportation. Also protect outside of appliance with a blanket, or similar items.

### ➤ **Energy saving tips**

The appliance should be located in the coolest area of the room, away from heat producing appliances, and out of direct sunlight.

## TROUBLE SHOOTING GUIDE

If you feel the appliance is out of order, follow these instructions to try to see if you can solve the problem simply by yourself before calling for service.

Problem	Possible Cause
Appliance does not operate	Not plugged in The appliance is turned off The circuit breaker tripped or a blown fuse
Appliance is not cold enough	Check the temperature control setting External environment may require a higher setting The door is opened too often The door is not closed completely The door gasket does not seal properly
Turns on and off frequently	The room temperature is hotter than normal Overload of the cabinet The door is opened too often The door is not closed completely The temperature control is not set correctly The door gasket does not seal properly
The light does not work	Not plugged in The circuit breaker tripped or a blown fuse The bulb has burned out The light button is "OFF"
Vibrations	Check to sure that the appliance is level
Too much noise	The rattling noise may come from the flow of the refrigerant, which is normal As each cycle ends, you may hear gurgling Contraction and expansion of the inside walls may cause popping and crackling noises The appliance is not level
The door will not close properly	The appliance is not level The door was reversed and not properly installed The gasket is dirty The shelves are out of position.
The control panel does not work	Not plugged in The control panel is locked Please press  to unlock (see control system instruction)
The unit beeps	Wine cooler self-checking. This is normal

### Before disposal of the appliance:

1. Disconnect the main plug from the main socket.
2. Cut off the main cable and discard it.



This marking indicates that this product should not be disposed off with other household wastes. To prevent possible harm to the environment or human health from uncontrolled waste disposal, recycle it responsibly to promote the sustainable reuse of material resources. Check your local regulations for correct disposal of your appliance.