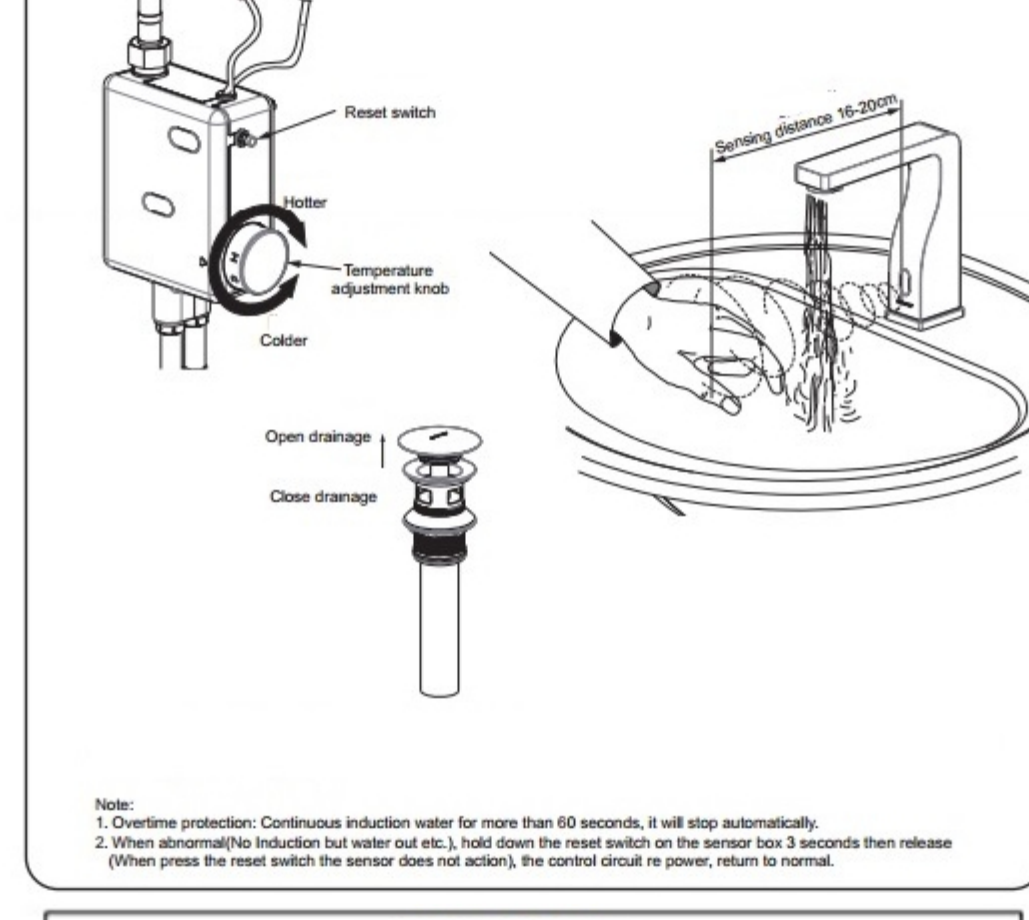
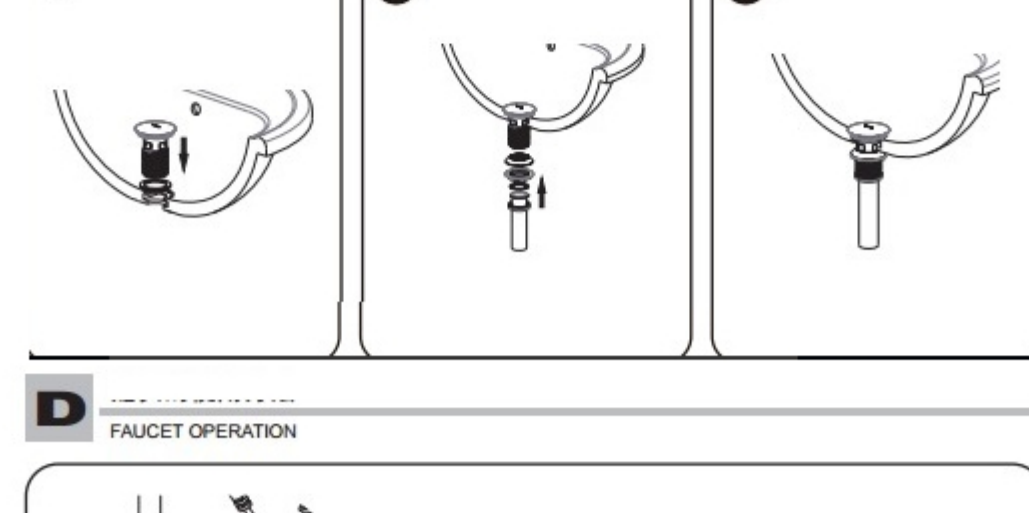
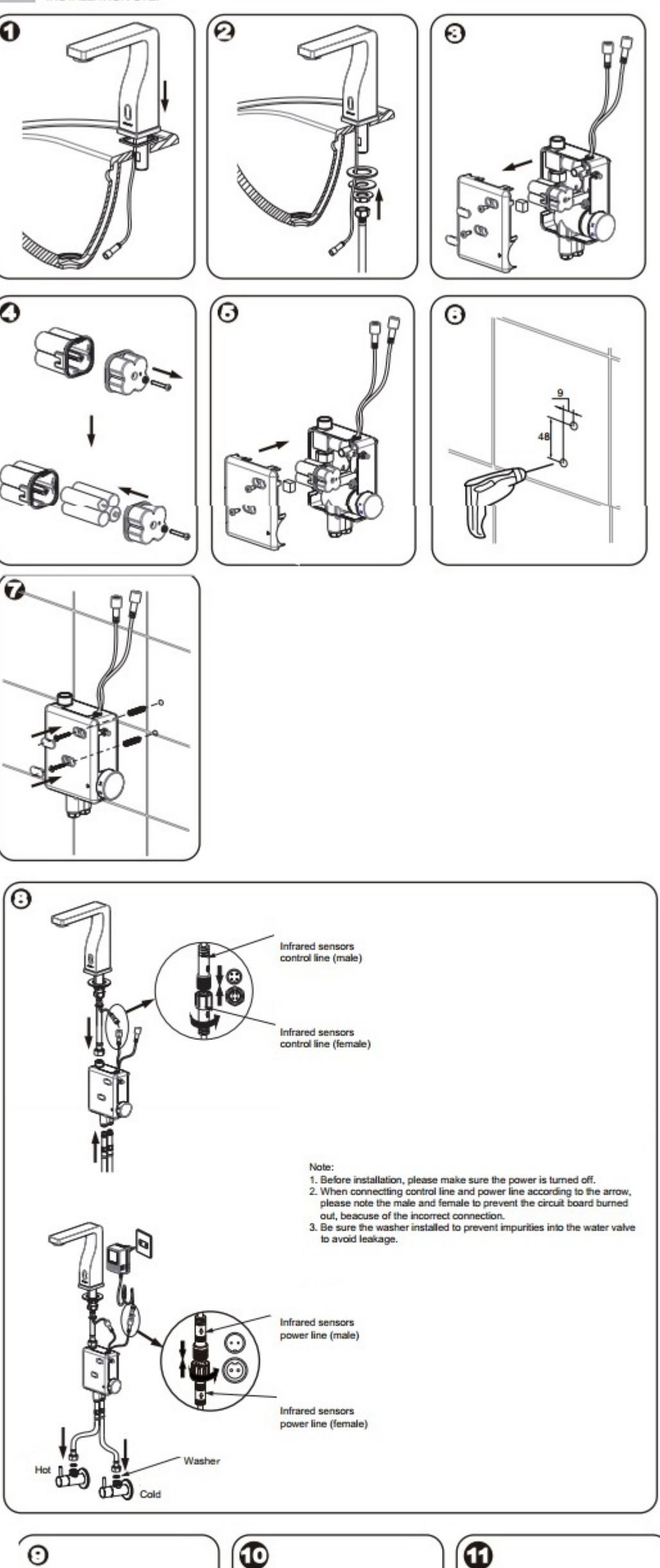
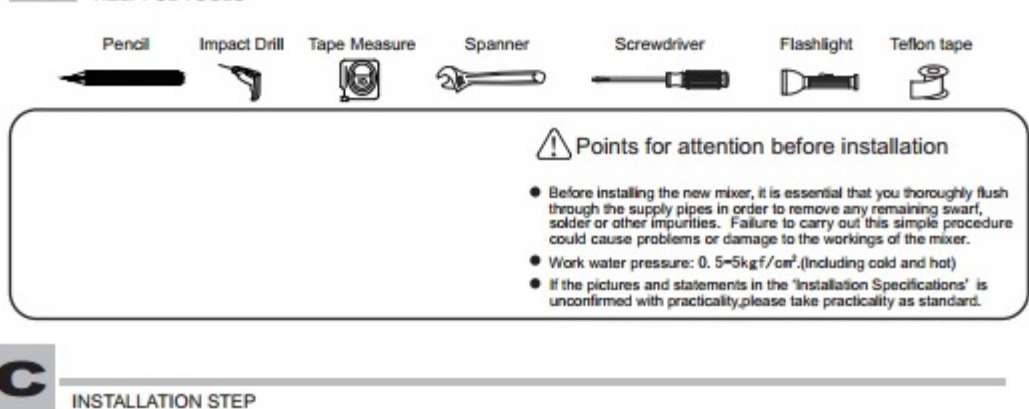
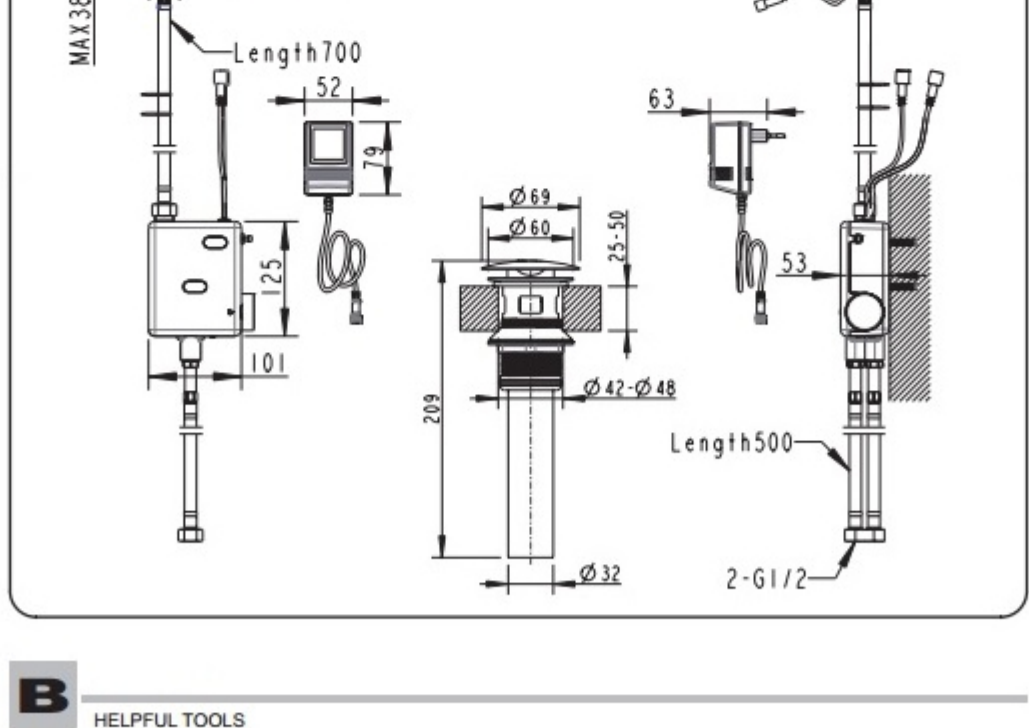
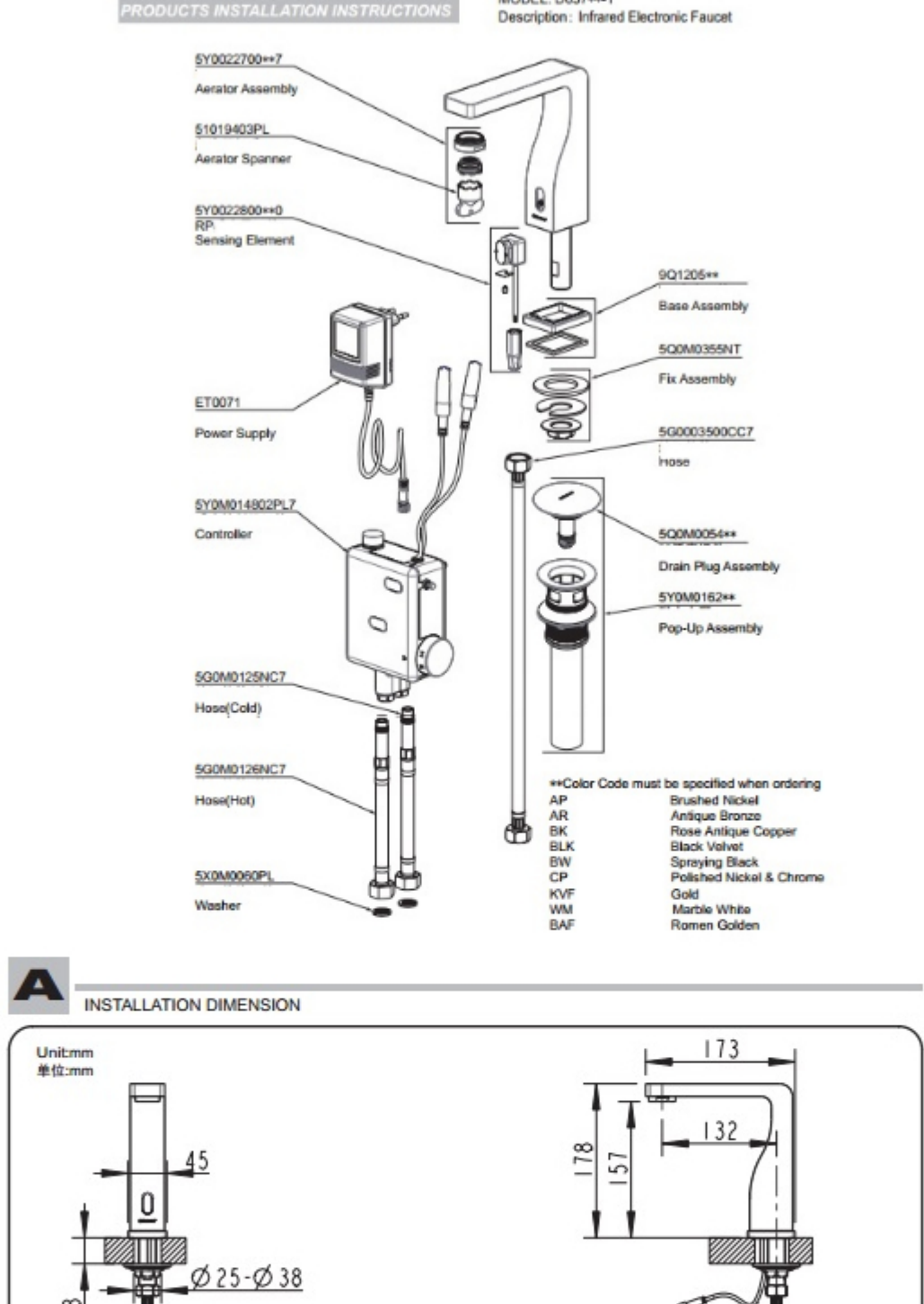


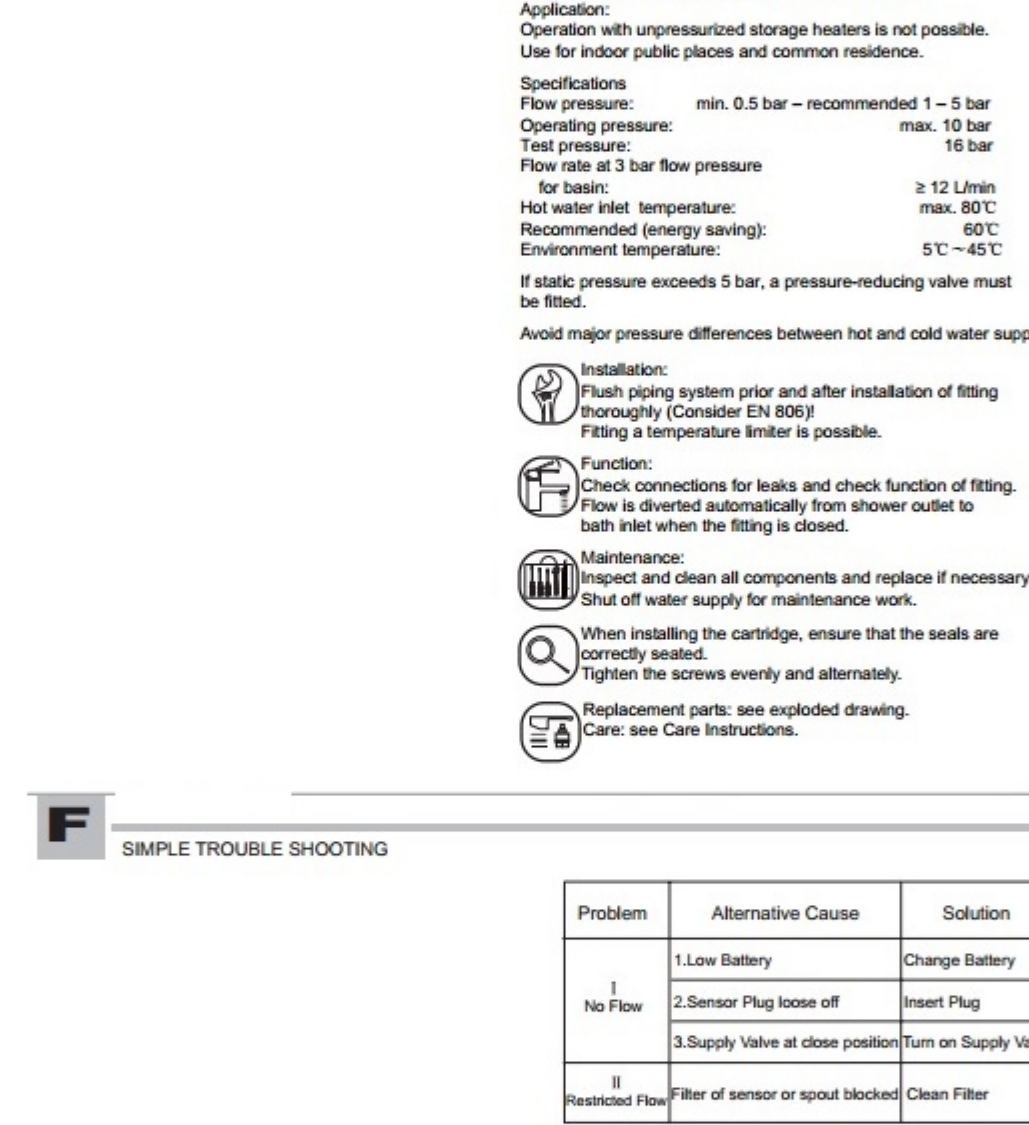
Bravat Mina Motion Sensor Faucets



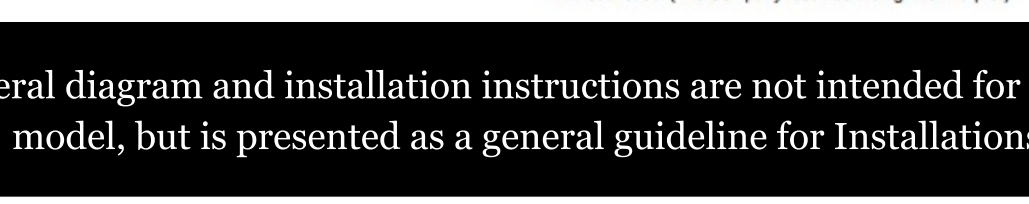
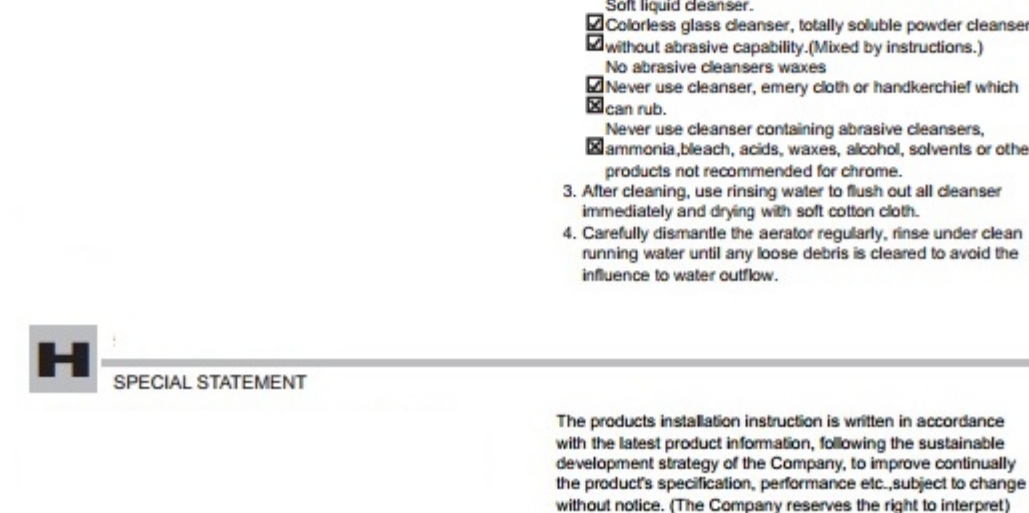
INSTALLATION INSTRUCTIONS



PARAMETE	
Power	Dc type: AA SIZE 1.5V Battery. 4 pcs Ac type:(for European standard): Input 220V, Output 6V/500mA
Sensing Distance	16-20cm
Sensing Duration	1 second
Battery Lift Time	Appr. 50,000 cycle
Supply Water Pressure	0.5-5kgf/cm2
Ambient Temperature	5℃-45℃(Supply Water Temperature5℃-50℃)
Supply Water Pipe Specification	G1/2
Non-working Power Consumption	<0.5mW



Problem	Alternative Cause	Solution
I No Flow	1.Low Battery	Change Battery
	2.Sensor Plug loose off	Insert Plug
	3.Supply Valve at close position/Turn on Supply Valve	
II Restricted Flow	Filter of sensor or spout blocked	Clean Filter



This General diagram and installation instructions are not intended for any specific model, but is presented as a general guideline for Installations!