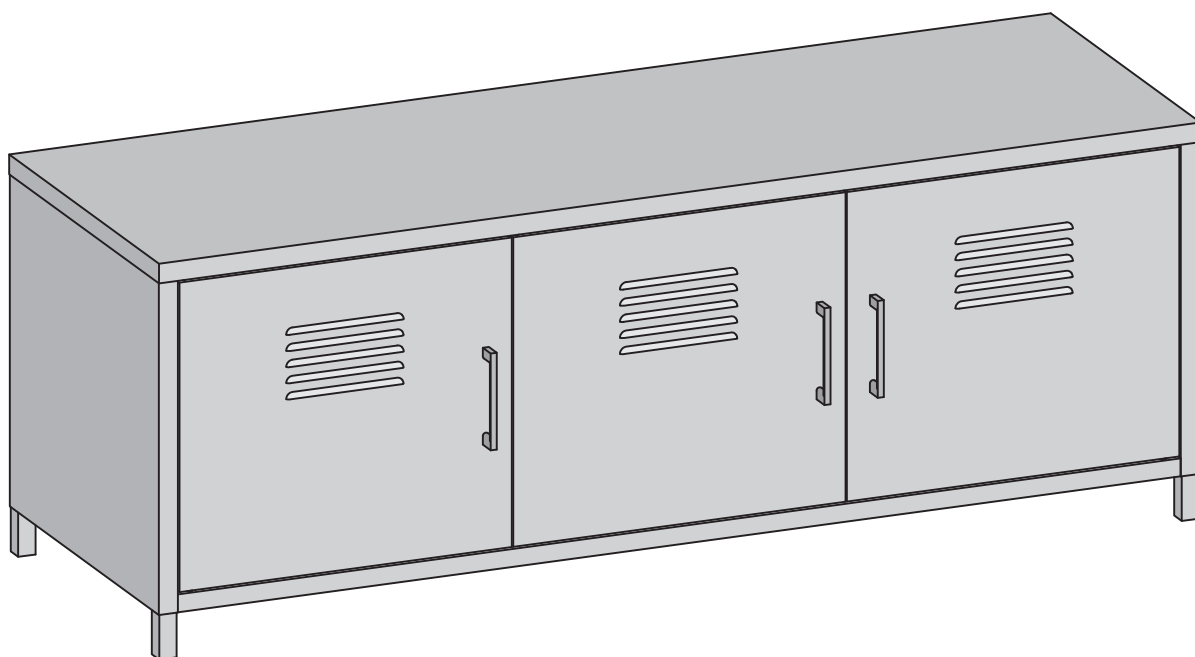




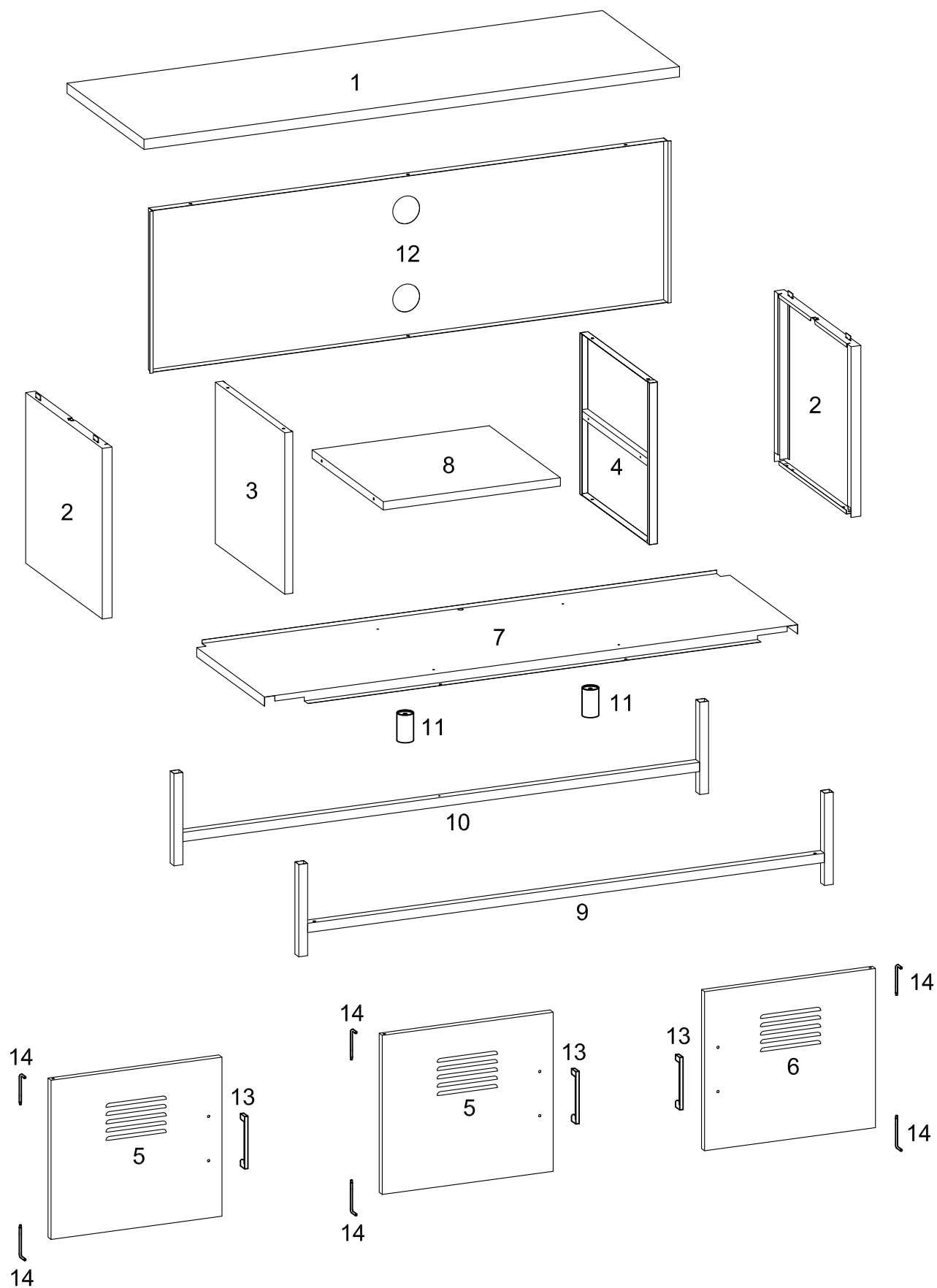
Item # : BM48LS
Assembly Instructions



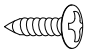

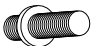
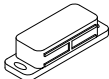

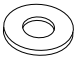

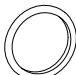
*Please visit our website for the most current instructions, assembly tips, report damage, or request parts. **www.walkeredison.com***

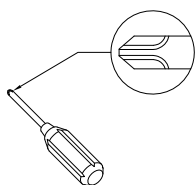
Revised 03/2017

Parts List



Hardware List

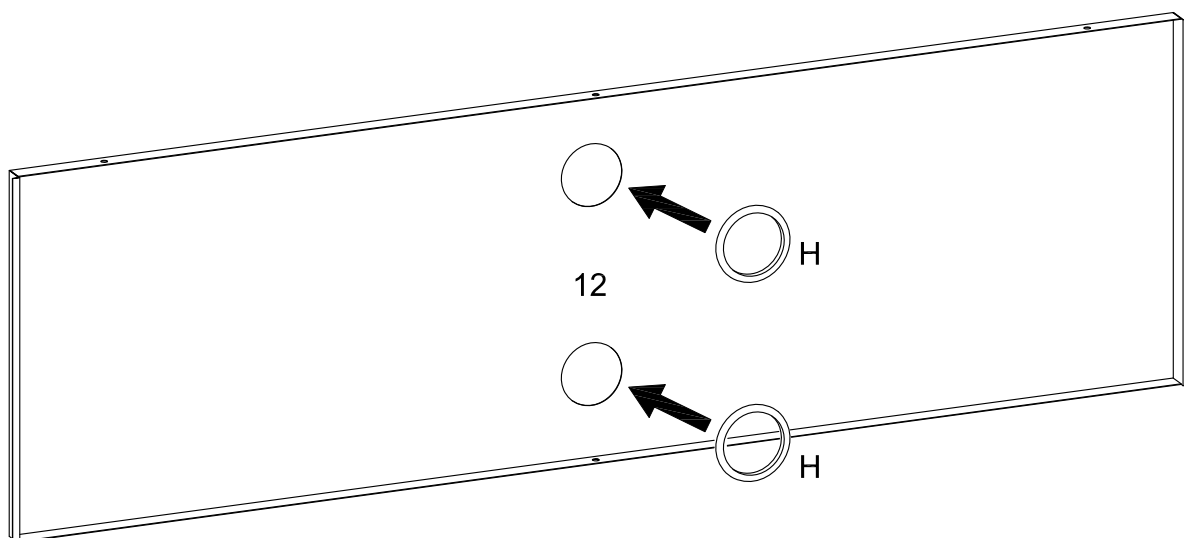
A		Ø4*12mm	Screw	18 pcs
B		Ø5/32"*6mm	Screw	6 pcs
C		Ø1/4"*40mm	Bolt	2 pcs
D			Door stopper	3 pcs
E		Ø3*12mm	Screw	6 pcs
F		Ø12*6.5*2.0mm	Plastic washer	3 pcs
G		Ø16*6.8*1.0mm	Washer	1 pc
H			Rubber coil	2 pcs



Philips head screwdriver required for assembly
(not included)

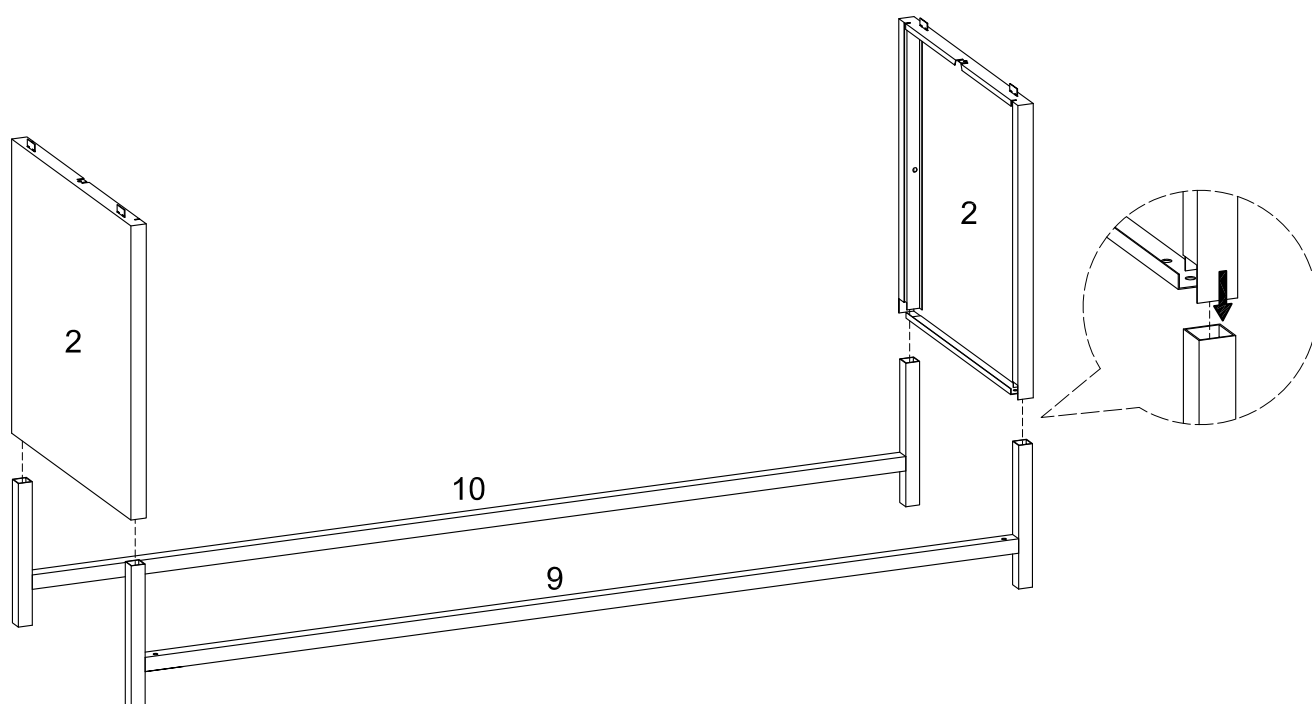
*The hardware quantities listed above are required for proper assembly.
Some extra hardware may also have been included.*

Step 1



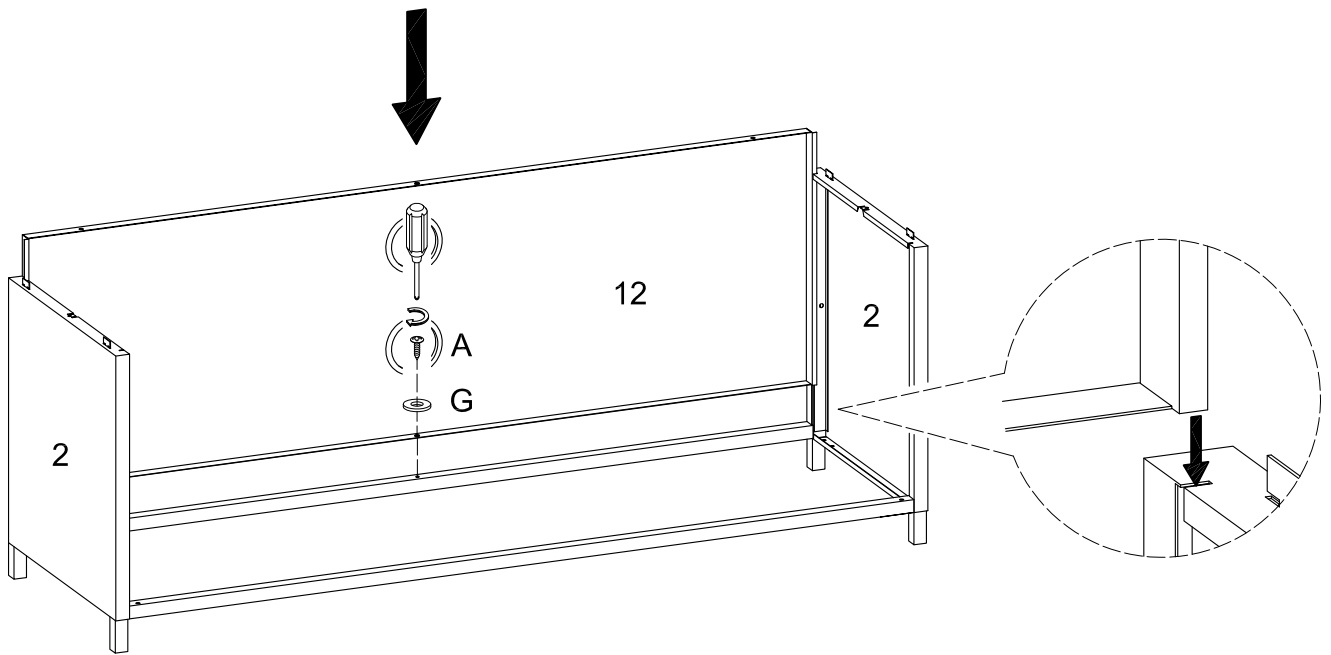
Insert the Rubber Coil (H) into the Back Panel (12).

Step 2



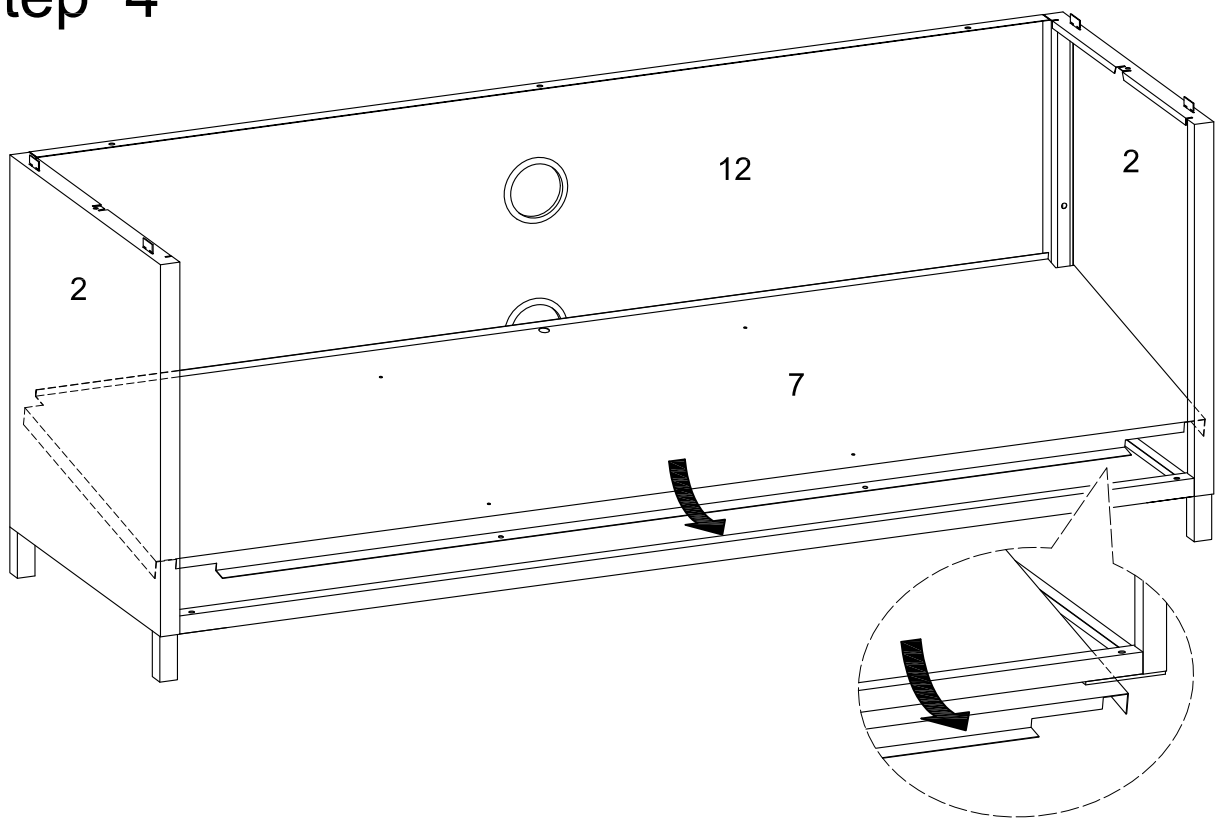
Insert the Side Panel (2) into the Support Bar (9, 10).

Step 3



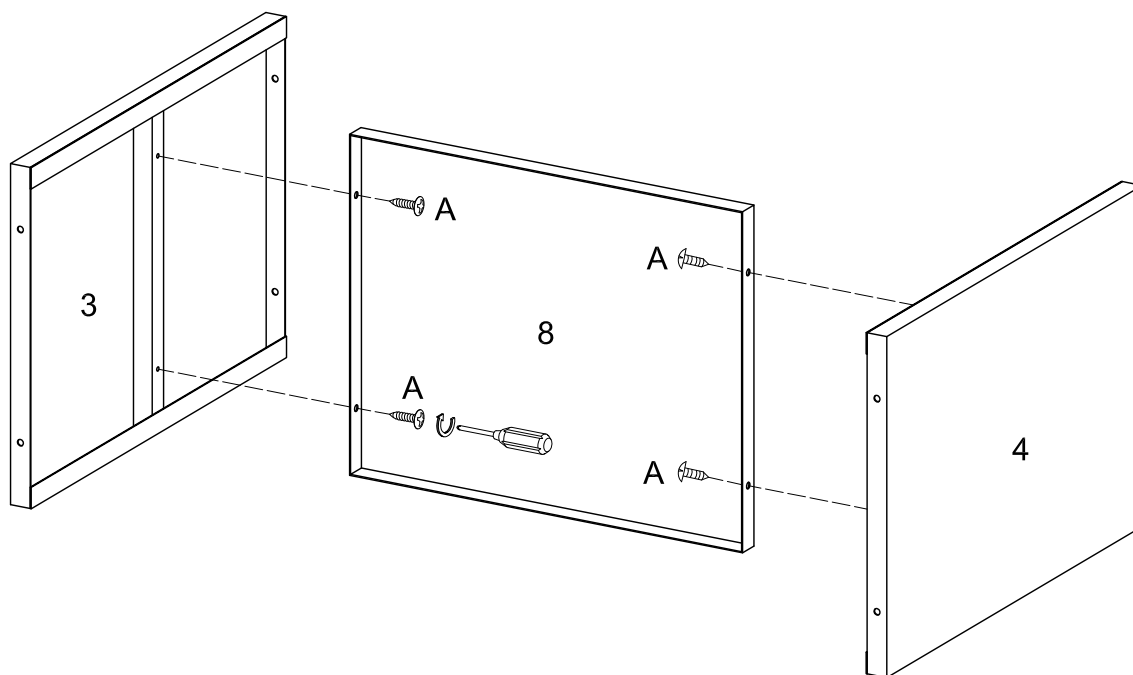
Insert the Back Panel (12) through Side Panel (2) and secure it with Screw (A) and Washer (G).

Step 4



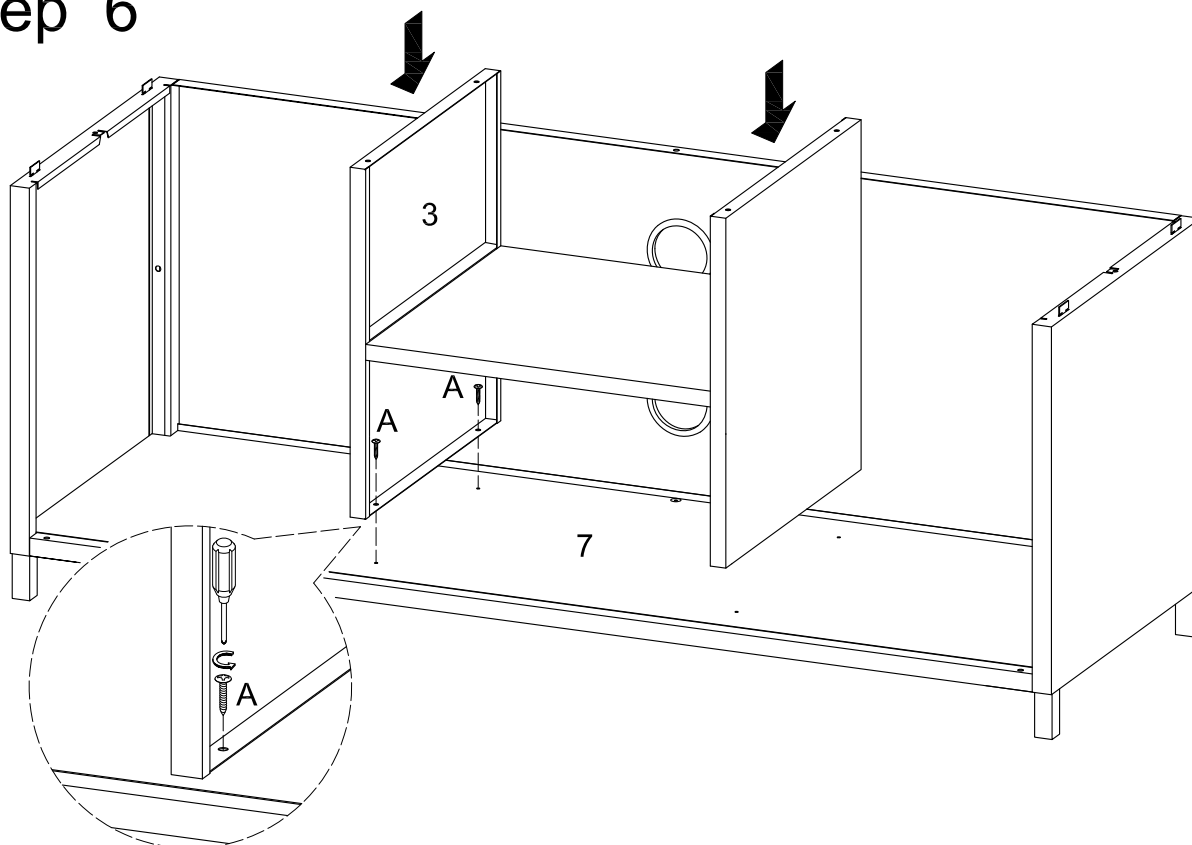
Slide in the Bottom Panel (7) to the Support Bar (9) as per diagram.

Step 5



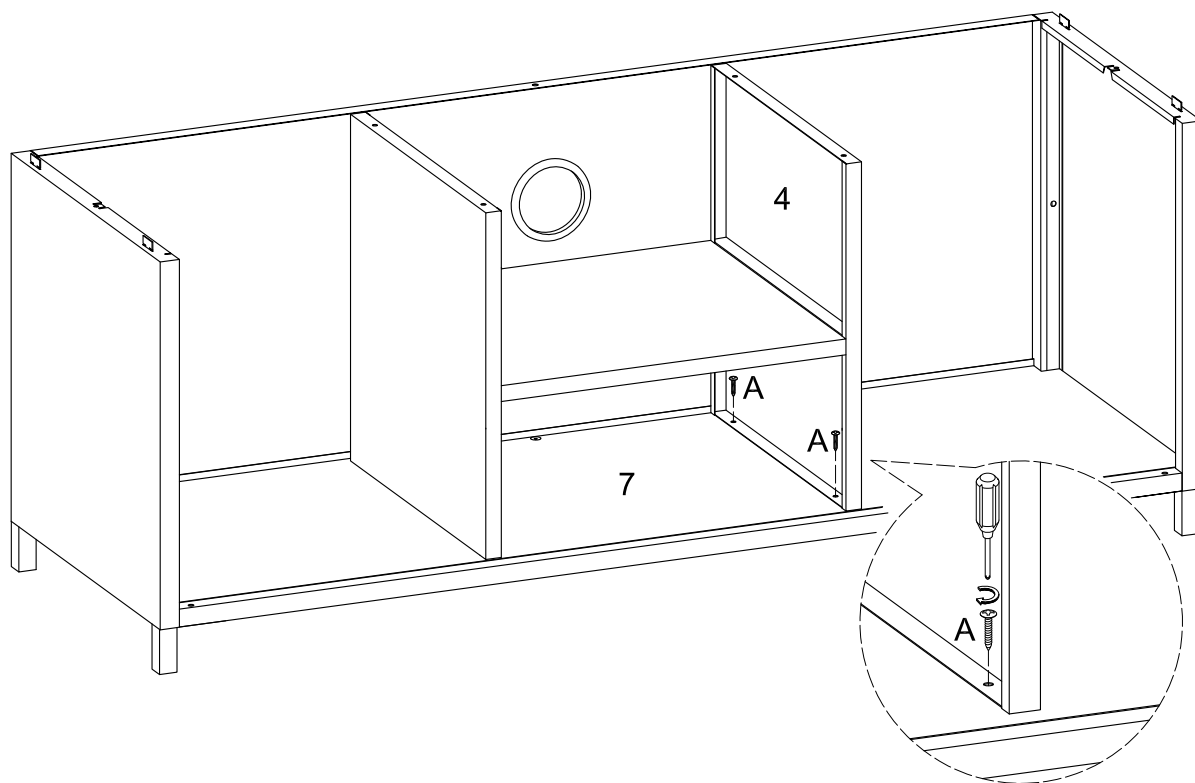
Secure the Shelf (8) with Screw (A) to the Middle Side Panel (3, 4).

Step 6



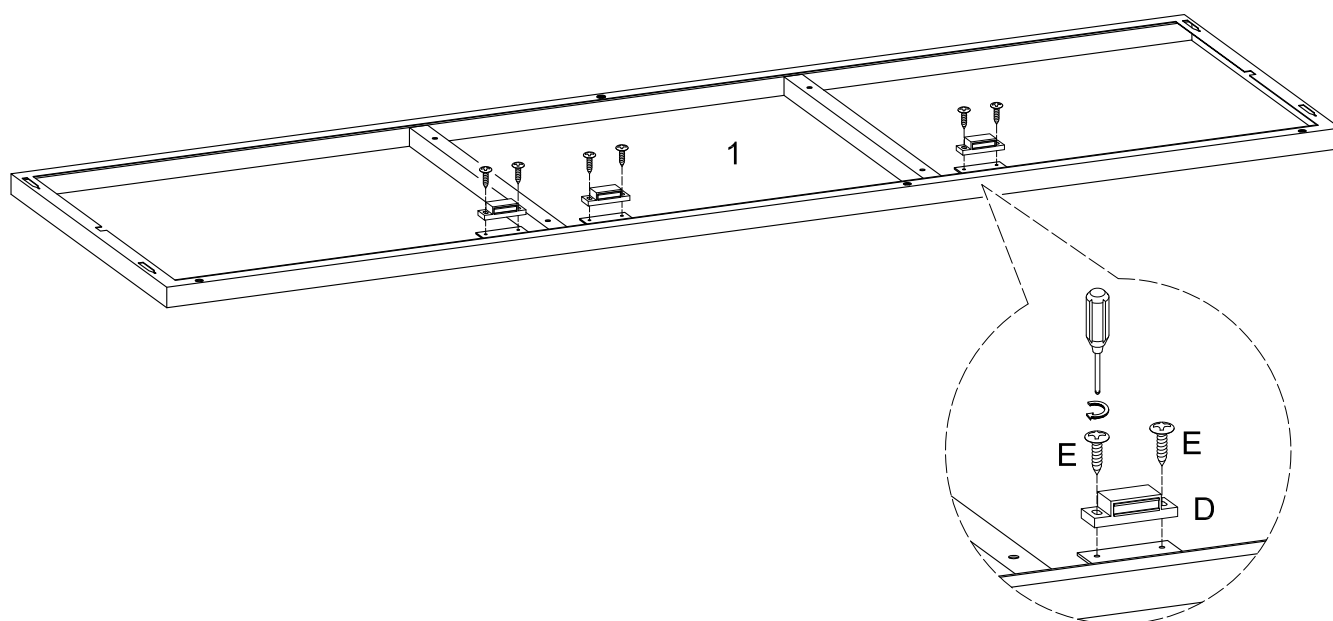
Secure the Middle Side Panel (3) with Screw (A) to the Bottom Panel (7).

Step 7



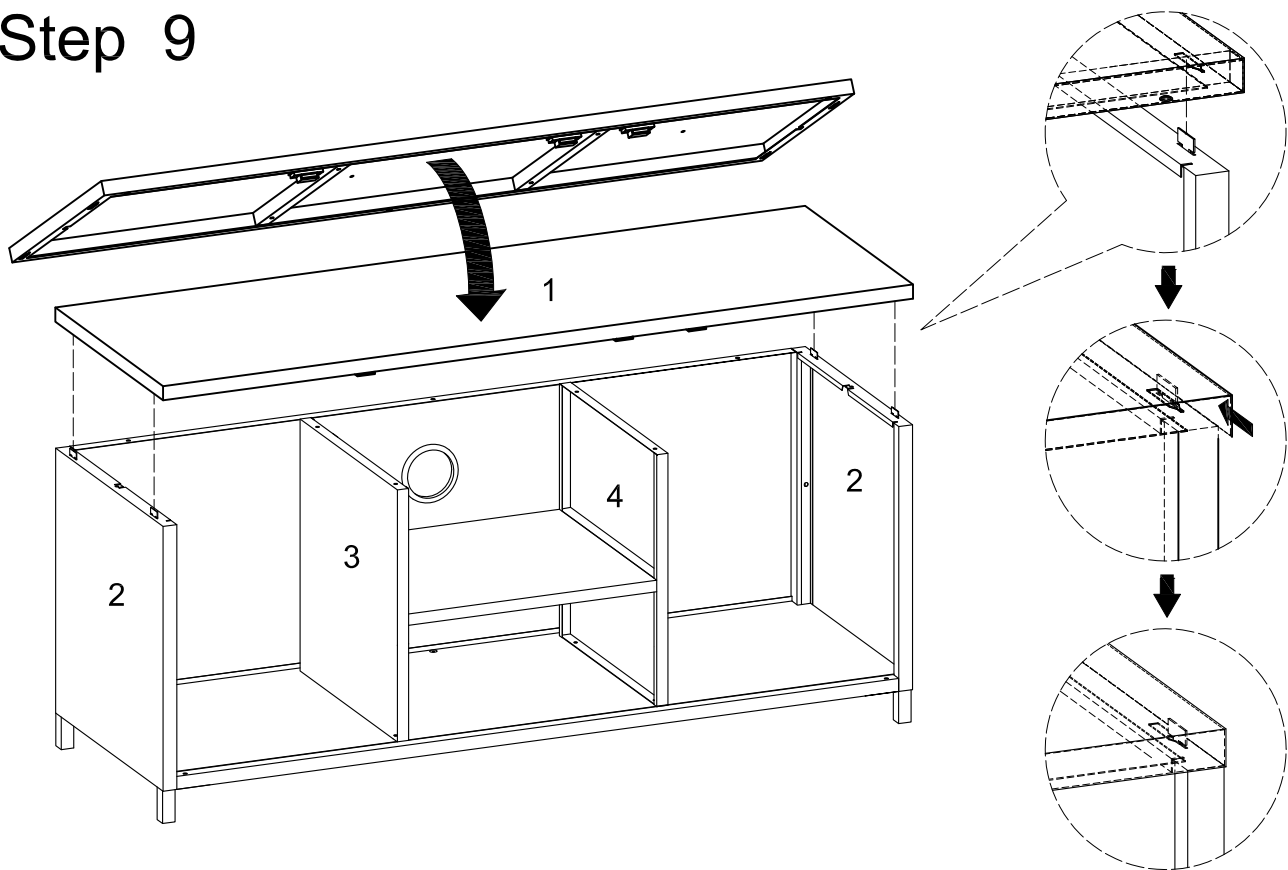
Secure the Middle Side Panel (4) with Screw (A) to the Bottom Panel (7).

Step 8



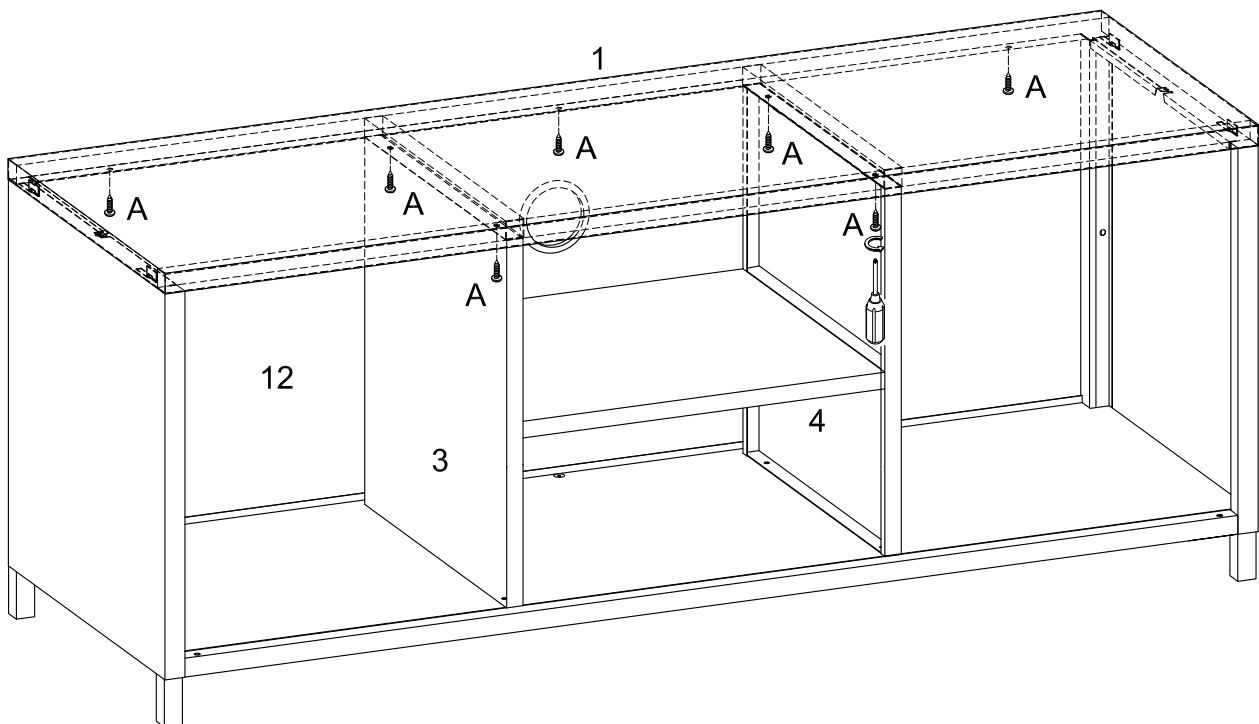
Secure the Door Stopper (D) with Screw (E) to the Top Panel (1).

Step 9



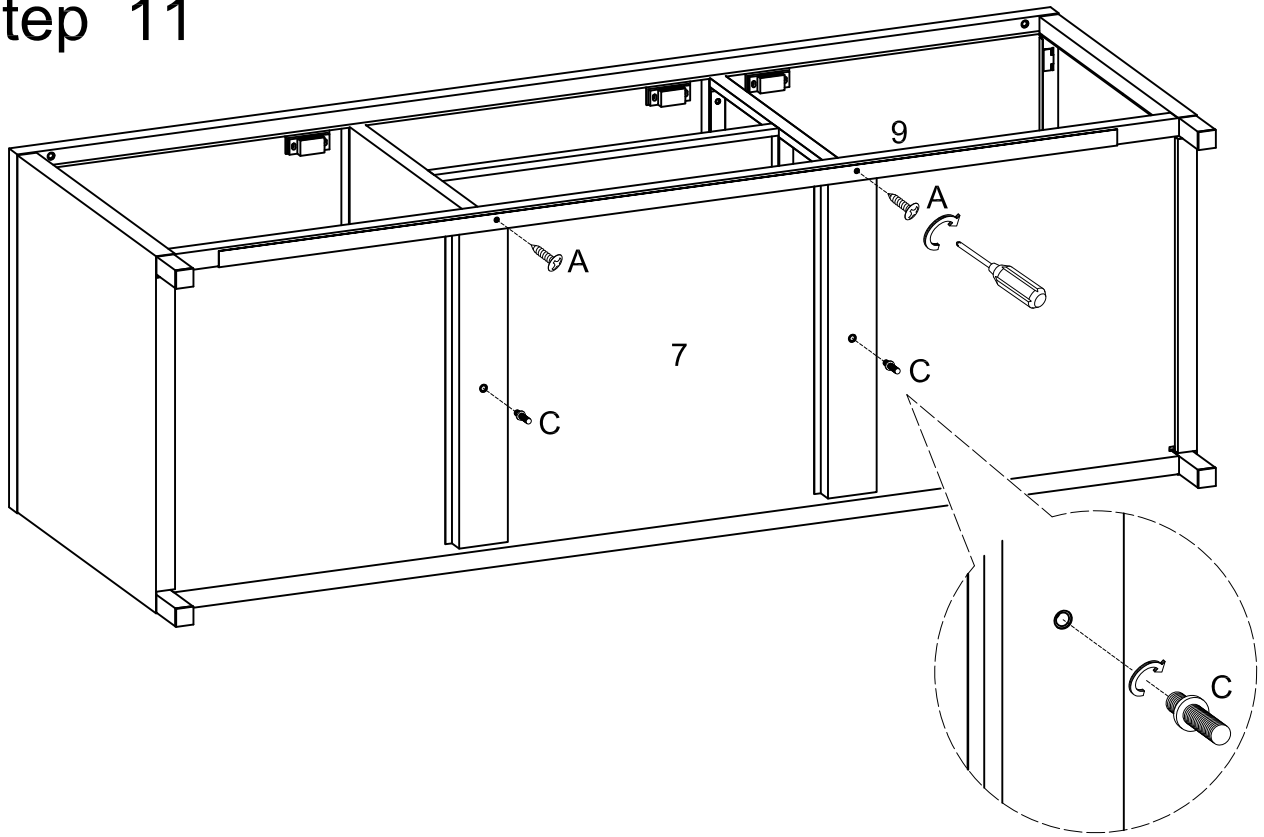
Put the Top Panel (1) on top of side panels (2,3,4) as per diagram.

Step 10



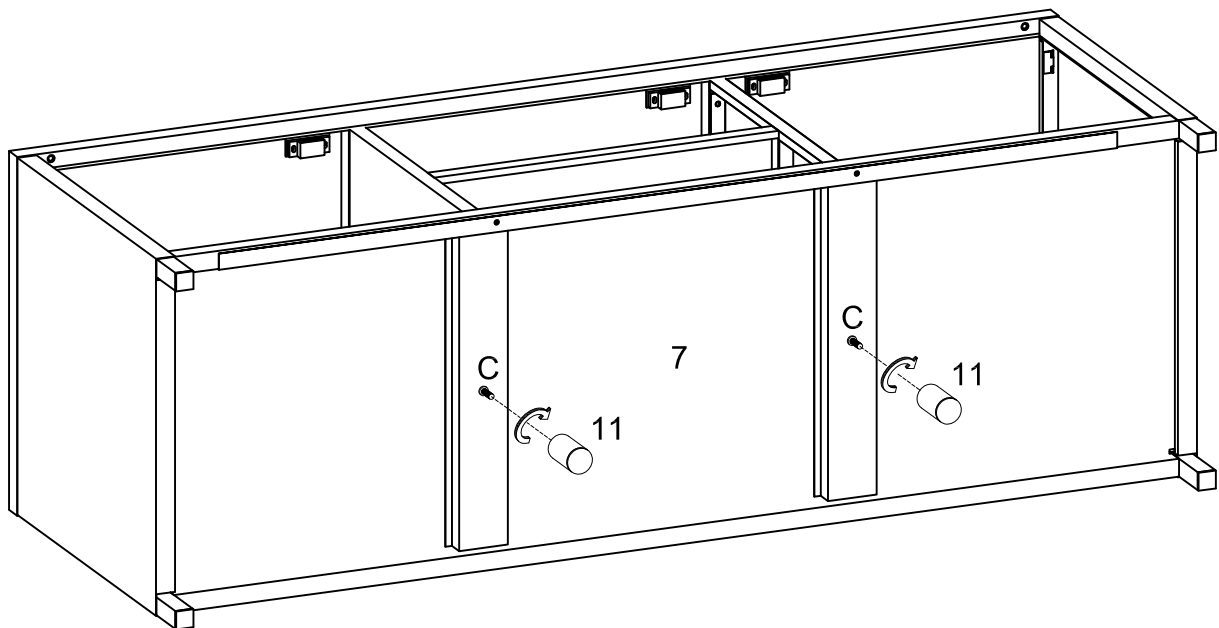
Secure the Top Panel (1) with Screw (A) to the Middle Side Panel (3, 4) and Back Panel (12).

Step 11



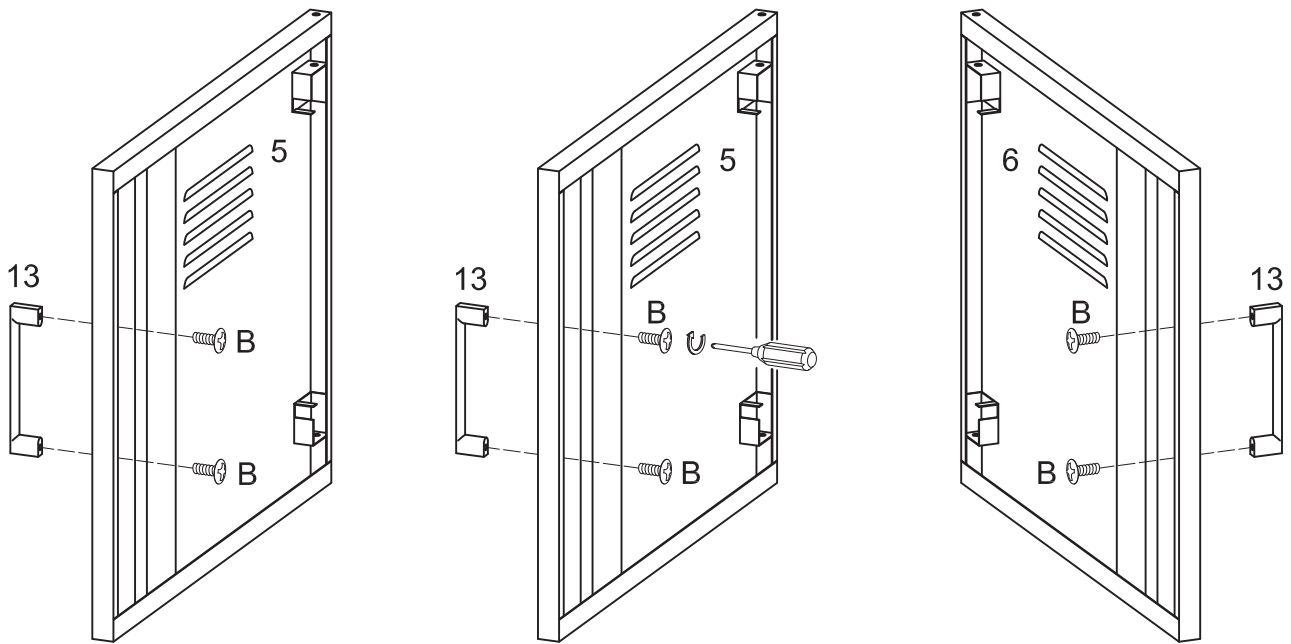
Insert bolt (C) to secure the Bottom Panel (7). Secure the Bottom panel (7) with Screw (A) to the Support Bar (9).

Step 12



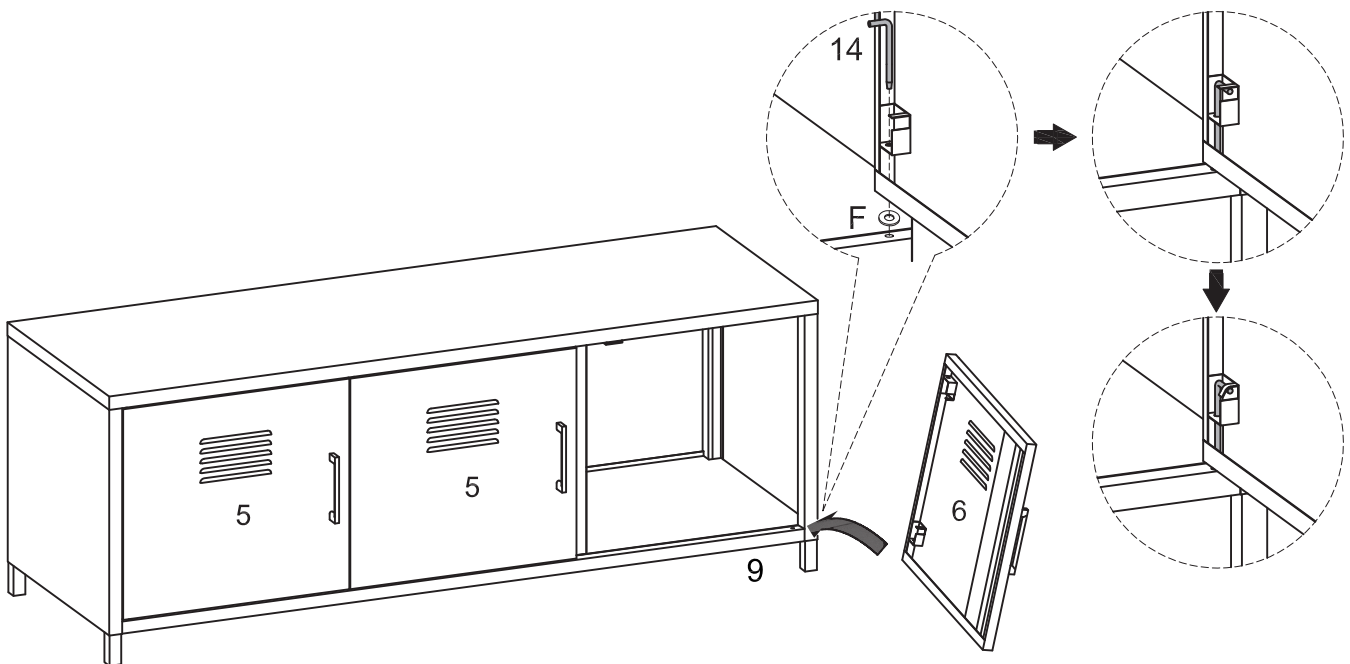
Secure the support legs (11) to the bolt (C) as per diagram.

Step 13



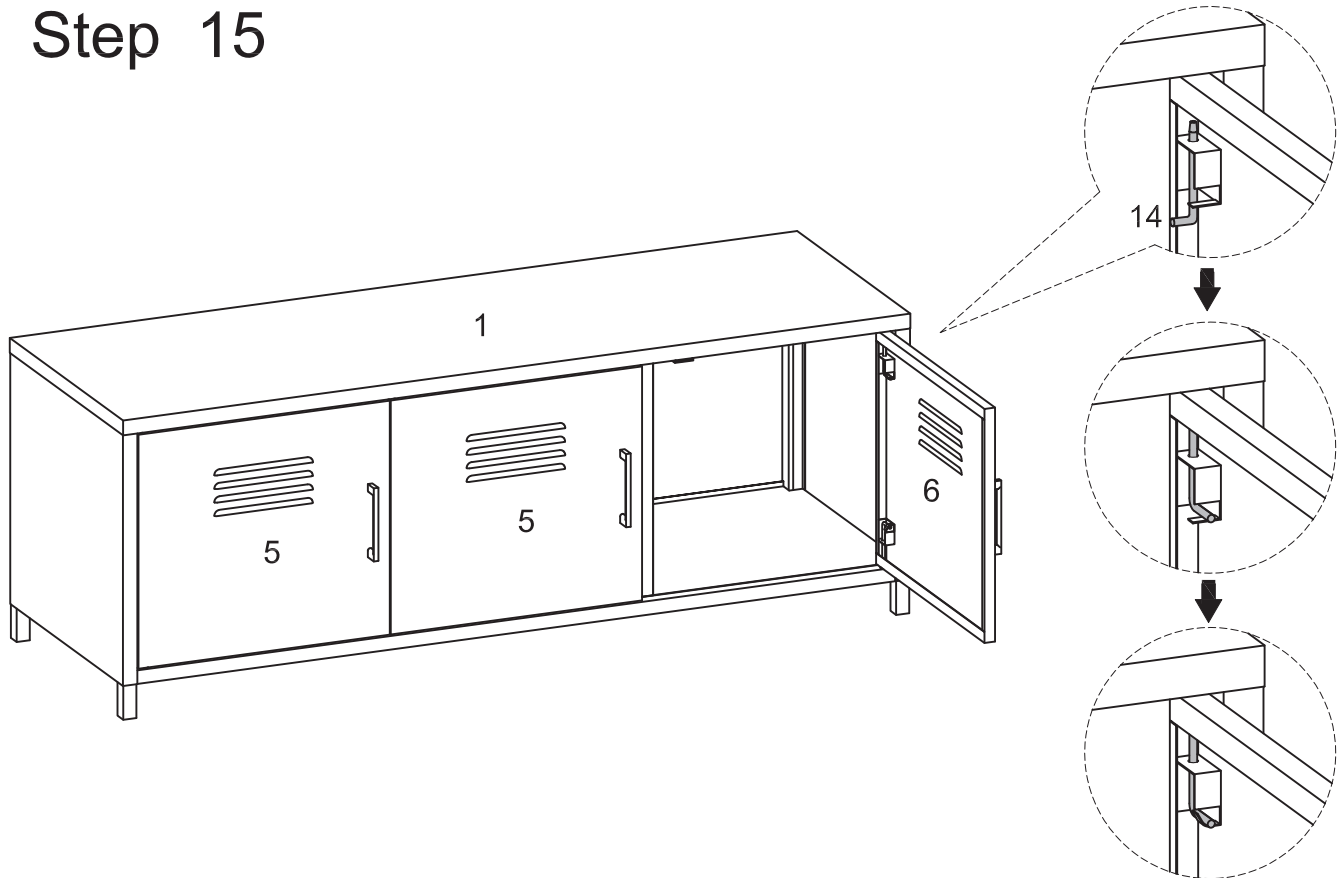
Secure the Handle (13) with Bolt (B) to the Door (5, 6).

Step 14



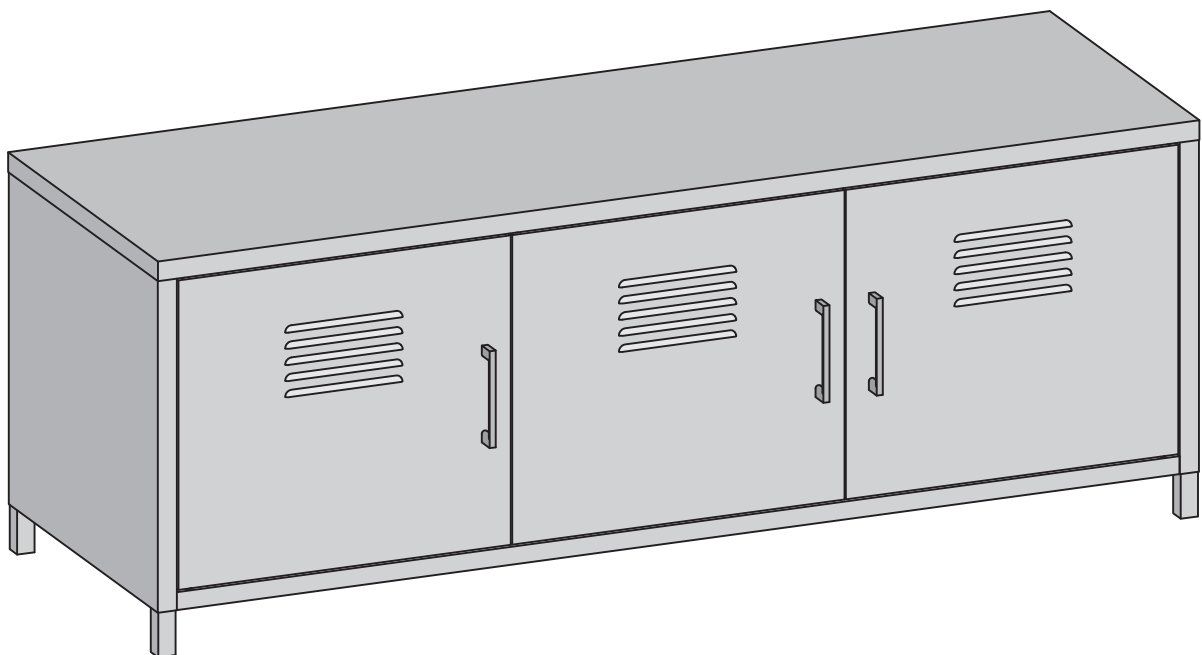
Place the plastic washer (F) on top of the hole in support bar (9). Insert the door (6) and secure it with L shape hook (14) as per diagram. Repeat the same step for doors (5).

Step 15



Insert the L Shape Hook (14) to secure the top parts of the Door (6). Repeat the same step for doors (5).

Step 16



Final Assembly