



PIONEER INDUSTRIES, INC.
 3325 S. Garfield Ave.
 Commerce, CA 90040
 (800) 338-9468
 www.pioneerind.com

INSTALLATION

Tools:



Adjustable Wrench



Plumbers Putty



Teflon Tape



Rags

Model Number: 2DM201

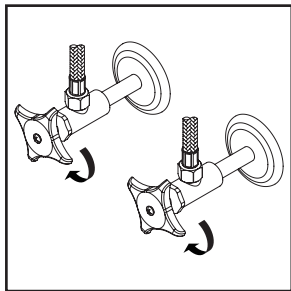


Warnings and Notes:

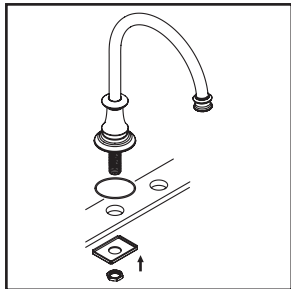
Check with local plumbing code requirements before installation.
 This product should be installed by a local listed plumber.
Do not use plumbers putty on threads.

Installation Steps:

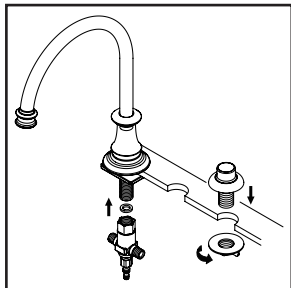
Two Handle Kitchen Widespread Faucet



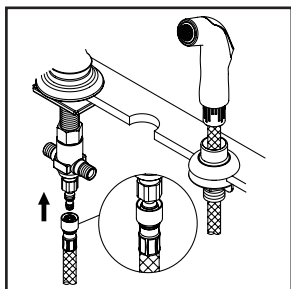
(1) Shut off the water supply. Remove old faucet. Clean mounting surface in preparation for new faucet.



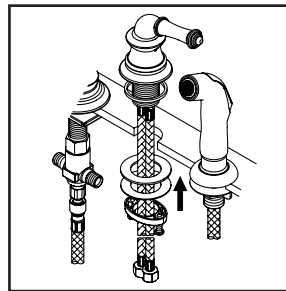
(2) Make sure O-ring is under escutcheon. Insert spout with spout escutcheon into mounting hole. Slide mounting plate through spout shank and tighten with locknut from underneath the sink.



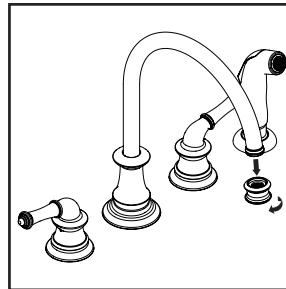
(3) Thread Cross connector to the spout shank. Ensure there is a washer in the Cross connector. Do not overtighten. For faucet with side spray, Place side spray holder on mounting hole. Tighten locknut from underneath the sink to secure side spray holder.



(4) Guide the side spray hose through the side spray holder. Insert the side spray hose quick connect adapter into faucet outlet end, push until a "click" is heard. Pull side spray hose downward to test engagement.



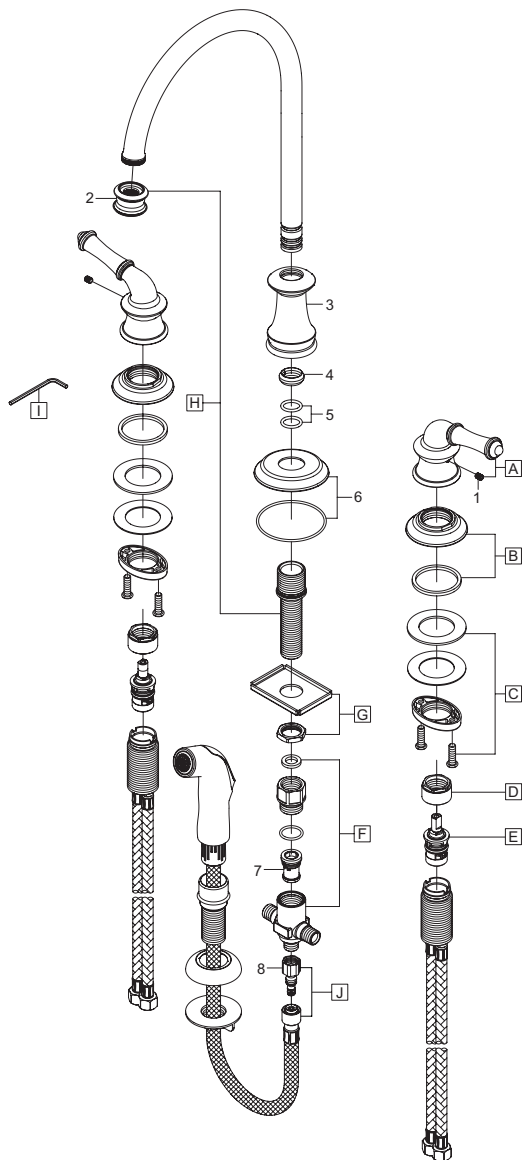
(5) Place cold and hot side valves in position on the sink, ensure handles operate in correct direction. From underneath of the sink hand-tighten locknut to the faucet. Position faucet to desired location from top. Tighten screws on locknut with the help of Phillips head screwdriver to secure faucet.



(6) Important: After installation is complete, remove the aerator. Turn on the water and allow both hot and cold water to run for at least one minute each. While water is running, check for leaks. Turn off the water and replace the aerator when finished.

Exploded Drawing :

* Note: Please specify finish/color when ordering.



	ITEM #	DESCRIPTION
A	X-1200006*	DM Lever Handle
B	X-4900023*	Valve Escutcheon and Gasket
C	OP-530006	Valve Mounting Kit
D	X-4900022	Bonnet Nut
E	OP-330002C, H	Ceramic Stem-Cold, Hot
F	X-4200025	Cross Connector
G	X-5200003	Spout Mounting Kit
H	X-2200005*	DM High Gooseneck Spout
I	X-4900024	3/32" Allen Wrench
J	OP-420077*	Side Spray Assembly
1	X-4900002	3/32" Allen Screw
2	X-4200114*	1.5 GPM Aerator
3	X-4200020*	Spout Bonnet Nut
4	X-4900013	Spout Snap Ring
5	X-4900012	Spout O-rings
6	X-4200023*	Spout Escutcheon and O-ring
7	X-4200016	Diverter Piston
8	OP-420083	Quick Connect Adapter



For more care information or trouble shooting inquiries
about your Pioneer product, please call:
Pioneer Industries, Inc. (800) 338-9468
Monday-Friday 8 AM to 8 PM EST (5 AM to 5 PM PST)
www.pioneerind.com