

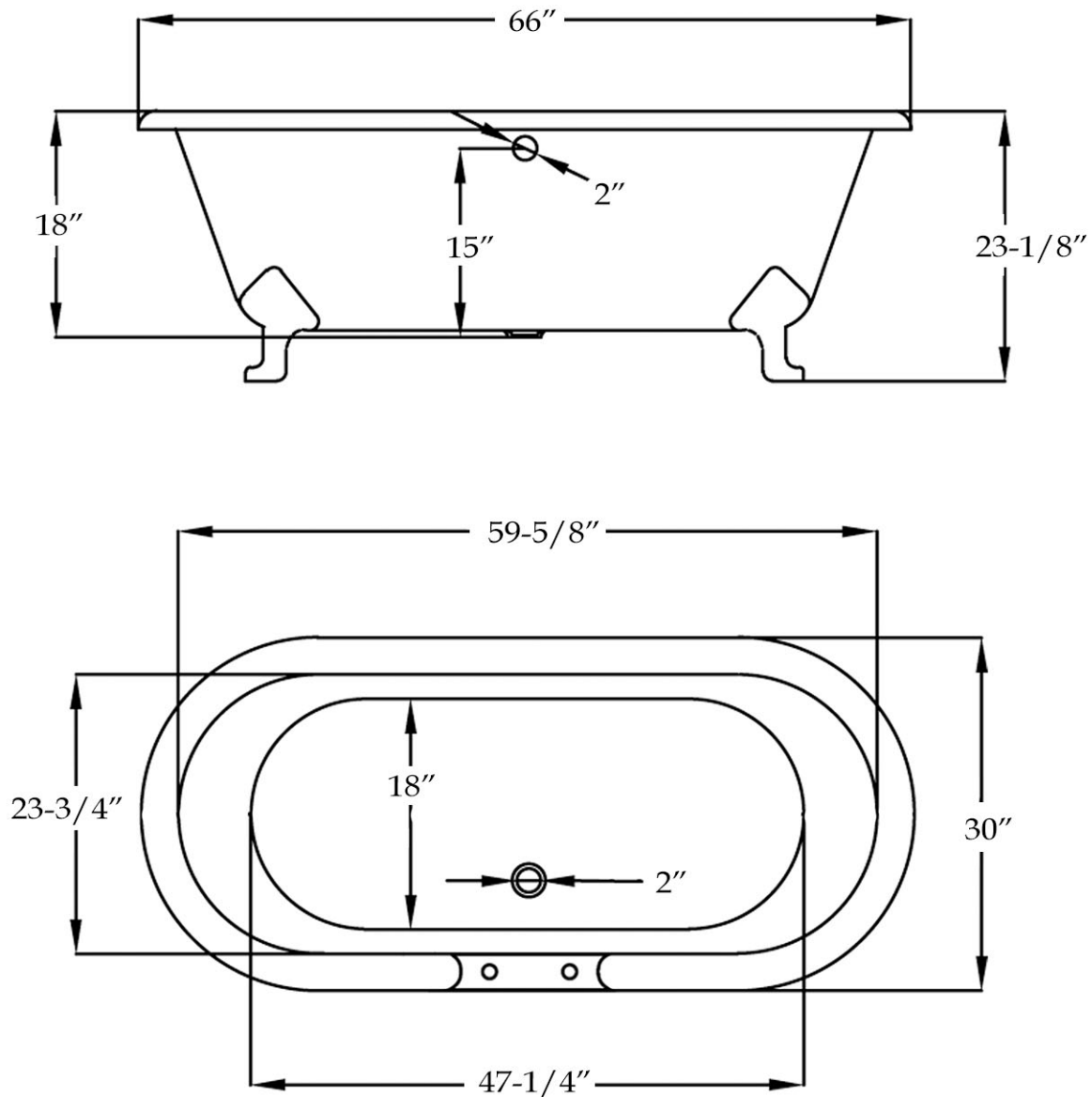


Schematic

Double Ended Clawfoot Tub *by Randolph Morris*

Cast Iron

Item #: RM66DE7



Weight (empty): 341 lbs Weight (filled): 869 lbs Capacity: 58 gal Water depth: 15"

All products and specifications are subject to change without notice. Randolph Morris is not responsible for typographical and/or dimensional errors. Typographical errors are subject to correction.

Note: Rough-in dimensions may vary +/- 1/2" and are subject to change. No responsibility is assumed by Randolph Morris.