



## ENGINEERING EXCELLENCE

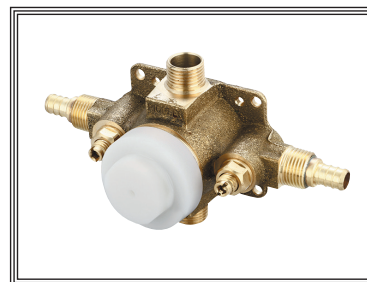
#4025B

SPECIFICATION SHEET

### DESCRIPTION

- Single Handle Pressure Balance Tub and Shower Valve Set
- 1/2" PEX Inlet W/Combo CXC & IPS Outlet
- Cartridge, Sleeve, Lock nut, Retaining Ring Ships With Trim Kit
- Brass Inlet Stops
- Back to Back Installation

**Note:-** Valve can be tested with air (200 PSI) or water (300 PSI) without Cartridge using supplied test cap.

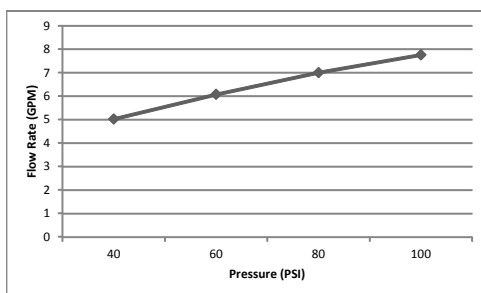


#4025B SHOWN

### STANDARDS APPLICABLE

- ASME A112.18.1
- ASSE 1016
- CUPC / IAPMO LISTED

**4025B Flow Rate (GPM) Vs Pressure (PSI)\***



\*Note:- This information is provided for reference only. Actual Flow Rate may vary depending on installation and inlet pressures.

Model #: \_\_\_\_\_

Specific Features: \_\_\_\_\_

Project Name: \_\_\_\_\_

Submitted For: \_\_\_\_\_

| Model    | Description   | Finishes                    |  |
|----------|---|-----------------------------|--|
| #4025B   | Single Handle Tub and Shower Valve Set                    | <input type="checkbox"/> NA |  |
| #4025B-B | Single Handle Tub and Shower Valve Set-Builder Tract Pack | <input type="checkbox"/> NA |  |



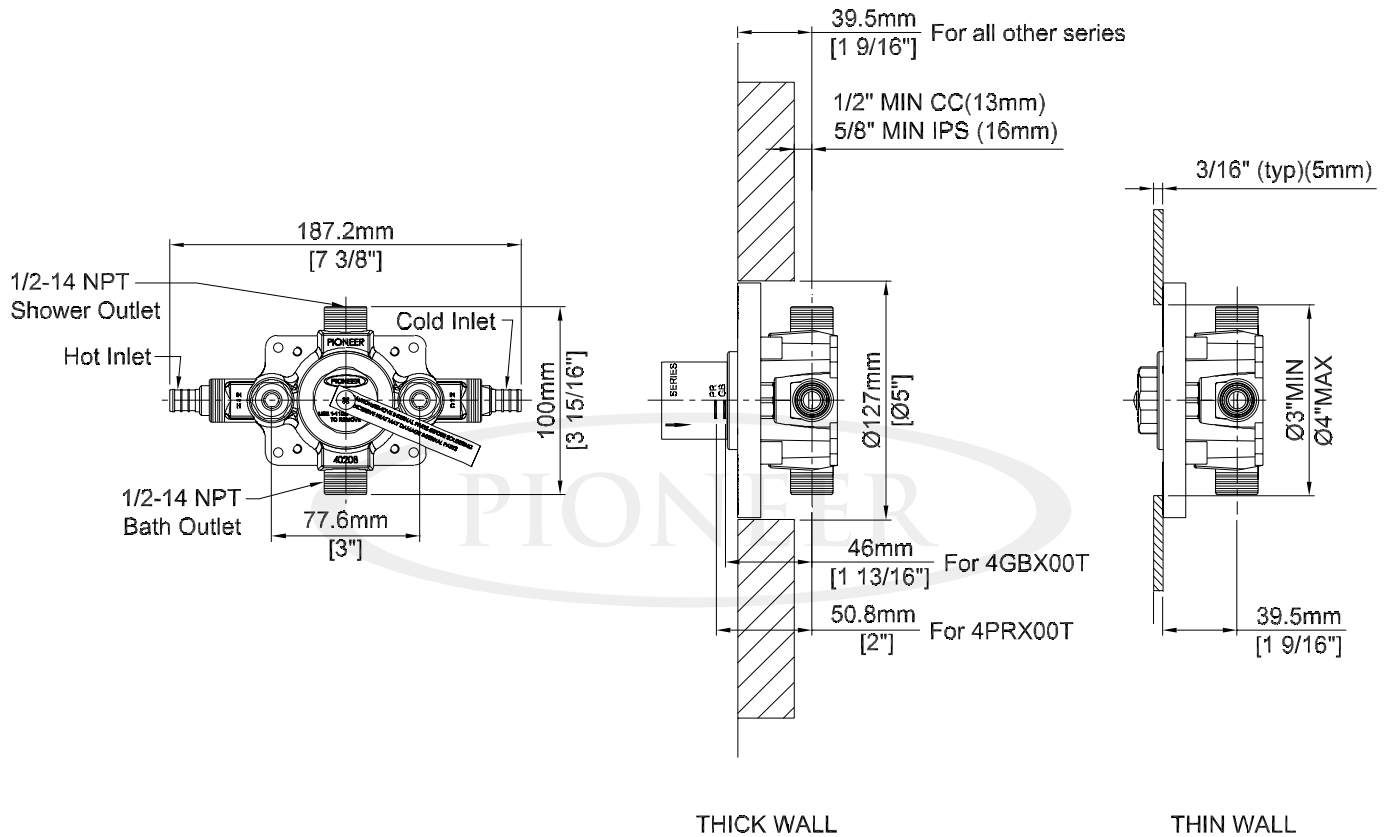
ENGINEERING EXCELLENCE

Pioneer: 1-800-338-9468  
Commerce, CA 90040  
www.pioneerind.com  
Pioneer Industries, Inc. © 2013

DMPB4025B/REV. 12 2012  
Page 1 of 2

**Installation Note:**

For thicker wall installation stem extension (X-4400088) is available. This will extend stem length by 1".

**Product Diagram**

ENGINEERING EXCELLENCE

Pioneer: 1-800-338-9468

Commerce, CA 90040

[www.pioneerind.com](http://www.pioneerind.com)

Pioneer Industries, Inc. © 2013

DMPB4025B/REV. 12 2012

Page 2 of 2