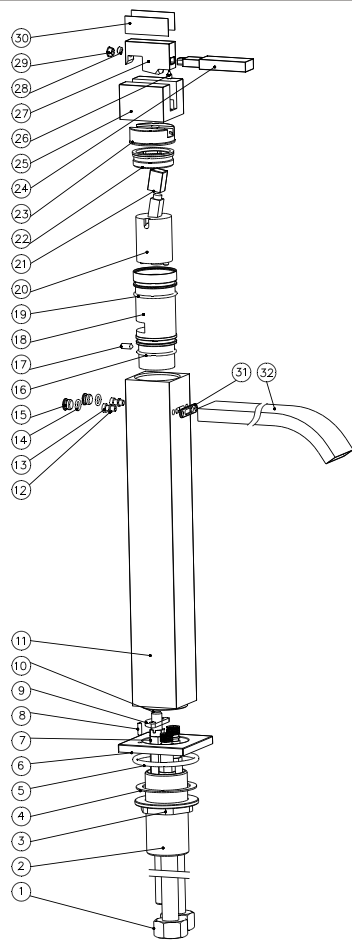


# Raised basin mixer

EB\_FM006V

## Installation Instruction

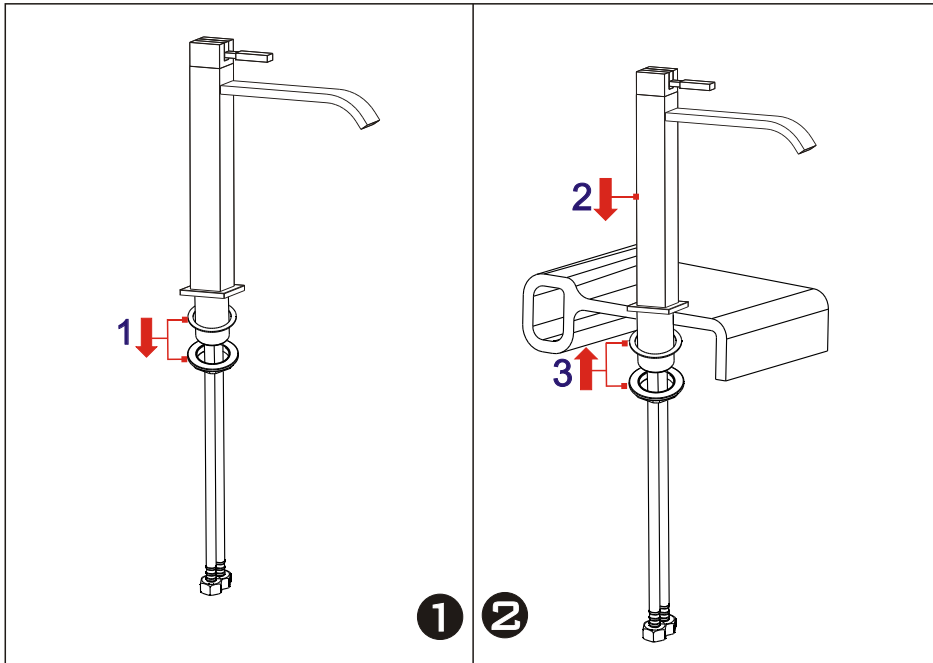
Please read this instruction carefully so as to avoid the installation difficulty.



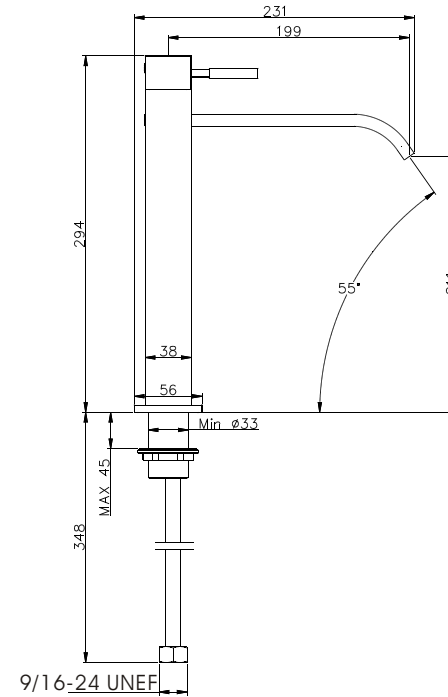
## Components List

No.	Component	Quantity
1	Flexible connection hose	2
2	Fastening nut	1
3	Pipe	1
4	Rubber washer	1
5	O-ring	1
6	Seat	1
7	Fastening nut	1
8	Setting pin	1
9	Decorating piece	1
10	Fastening bolt	1
11	Main body	1
12	Spring shim	2
13	Cross-head screw	2
14	O-ring	2
15	Plug	2
16	O-ring	1
17	Female allen screw	1
18	Bushing	1
19	O-ring	1
20	Ceramic cartridge	1
21	Bushing	1
22	Cartridge fastener	1
23	Bushing	1
24	Handle	1
25	Turning handle	1
26	Fastening screw	1
27	Handle cover	1
28	Female allen screw	1
29	Index	1
30	Plastic washer	2
31	Flat washer	1
32	Spout	1

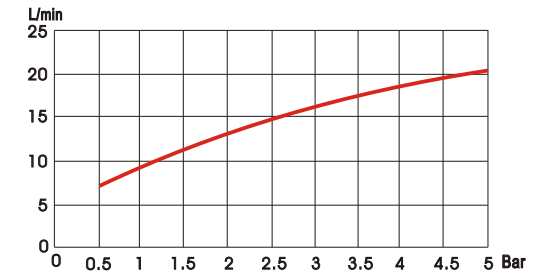
## Installation Step



## Installation Fig



## Flow rate Curves



Test pressure: 1.6MPa (16bar)

Flow pressure:

Min 0.05MPa

Max 1.60MPa

Recommended pressure:

0.1MPa to 0.8MPa (1 to 8 bar)

## Note

1. Ensure to clean the water supply pipe before installing to avoid being jammed.
2. The cold-water supply must be connected on the right and the hot-water supply on the left.
3. Check the installing dimension according to the Figure and ensure it is installed correctly.
4. Hot-water inlet must not be over 80°C.