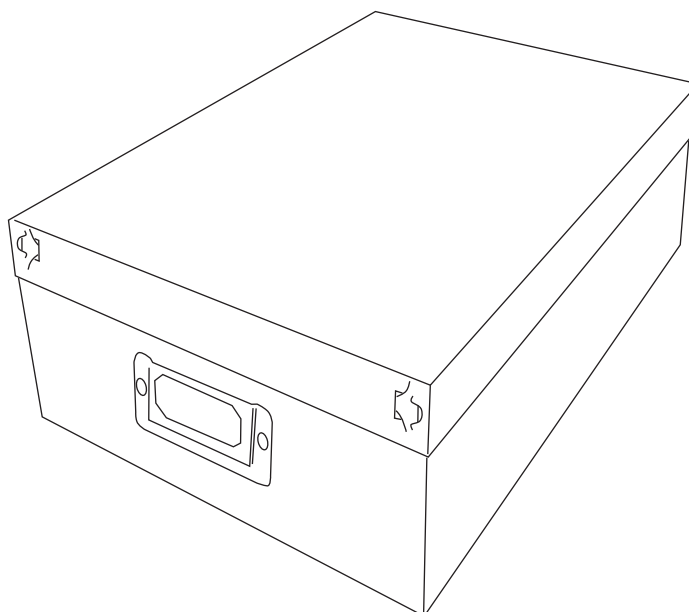
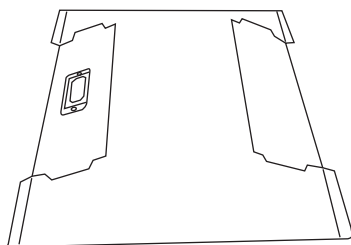


6754-977-5 Plastic Organizer Boxes S/5

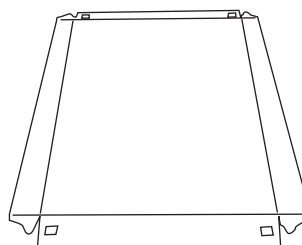


No tools required.

Parts

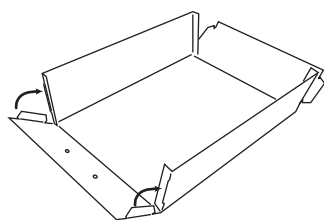


A 5 ea
Organizer Box Bottom



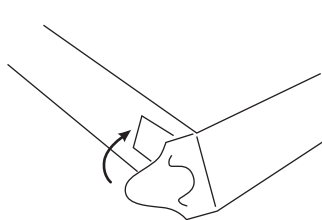
B 5 ea
Organizer Box Top

Note: We recommend pre-folding at fold lines to make assembly easier.



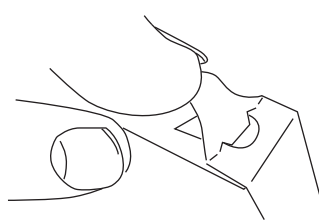
STEP 1:

- Fold sides of organizer box bottom (**A**) up and insert tabs into slots as shown. Repeat on all four corners.



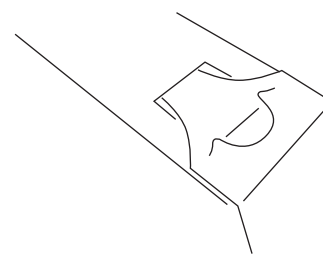
STEP 2:

- Fold tabs on organizer box top (**B**) over ends as shown.



STEP 3:

- Carefully fold tab ends on organizer box top (**B**) up and insert back of tab into square hole as shown.



STEP 4:

- Fold front of tab into square hole as shown. Repeat steps 3-4 for all four corners of top.

8680 Swinnea Road • Suite 103 • Southaven, MS • 38671

NEED HELP? For help with assembly, or if you are missing a part, please call Whitmor's Consumer Care Team, 1-888-944-8667 between 8 a.m. and 4:30 p.m. (Central Standard Time) Monday through Friday. Or email: help@whitmor.com. Visit us online at www.whitmor.com