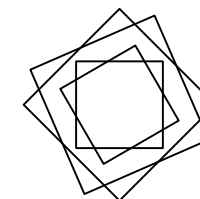
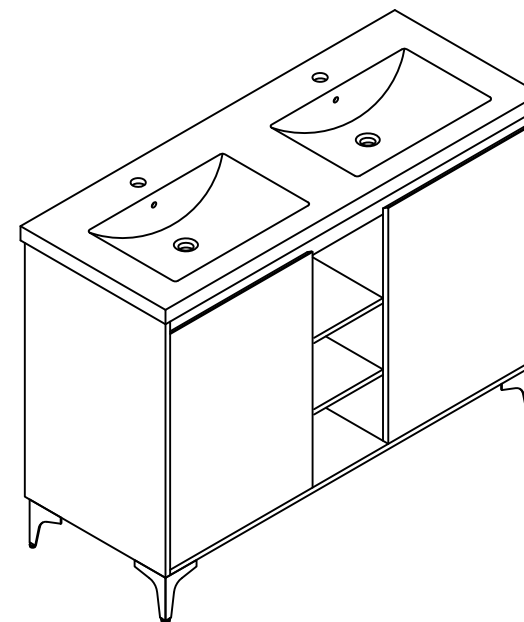


THANKS FOR WATCHING

Your feedback is invaluable to us and we would love to hear about your experience. Please take the time to leave us a review.




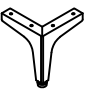







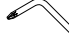




Thank you for shopping with us!

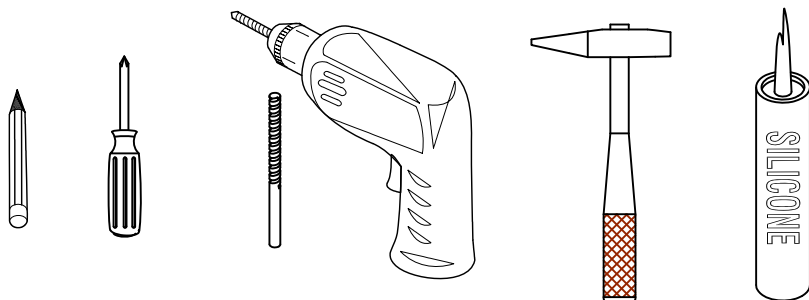
We encourage you to take a few minutes to go through this booklet. It contains important information on installation and care tips to keep your furniture looking as good as new.

Item NO.:BV B07148

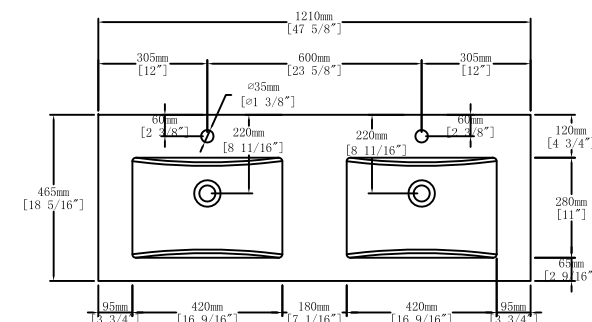
Hardware

NO.	Draw	QTY	NO.	Draw	QTY
A	 Screws Ø4x14mm	44	I	 Hinges (Internal hiding)	4
B	 Two-in-one connector	47	J	 Metal Feet	4
C	 Two-in-one connector	47	K	 Screws M4x14mm	16
D	 Wood plug	12	L	 Anti-collision gasket	4
E	 Plastic anchor(Ø10mm)	2	M	 Movable laminate support	8
F	 Screws for fix on the wall	2	N	 Screwdriver	1
G	 Bracket (53x70x44mm)	2			
H	 Bracket (19x19x35mm)	2			

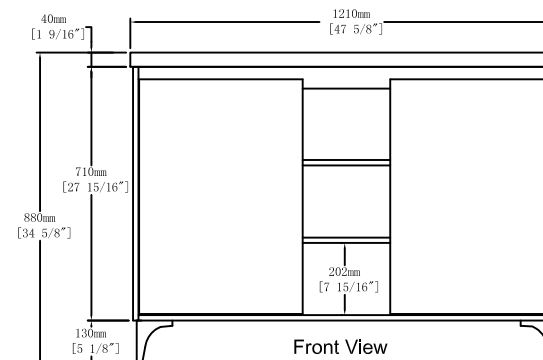
Recommended tools



Dimensions



Top View

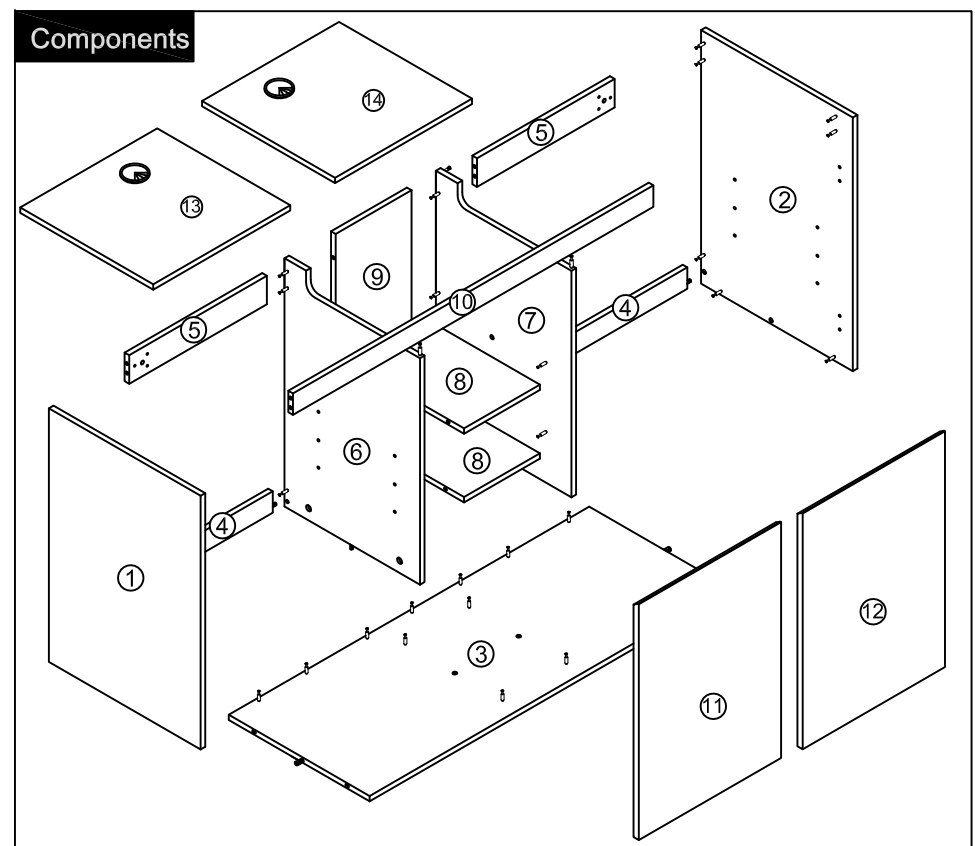
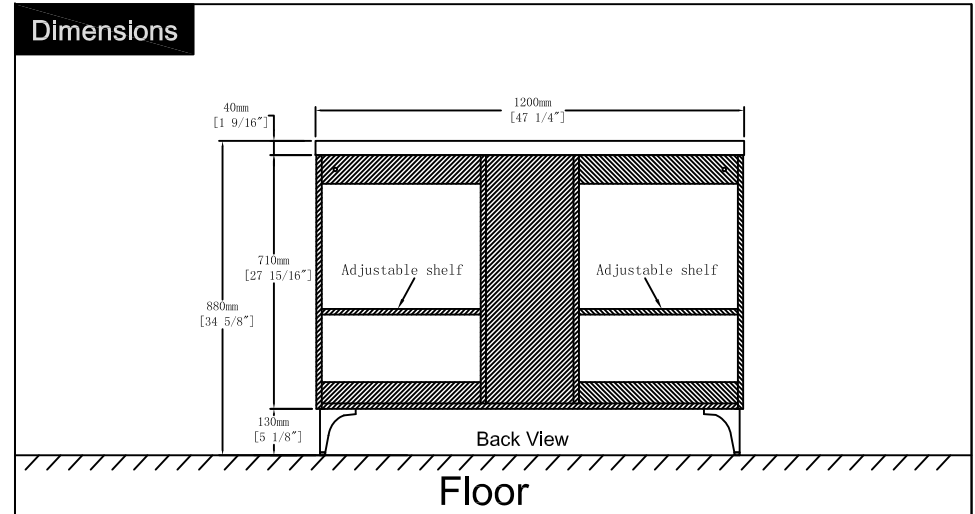
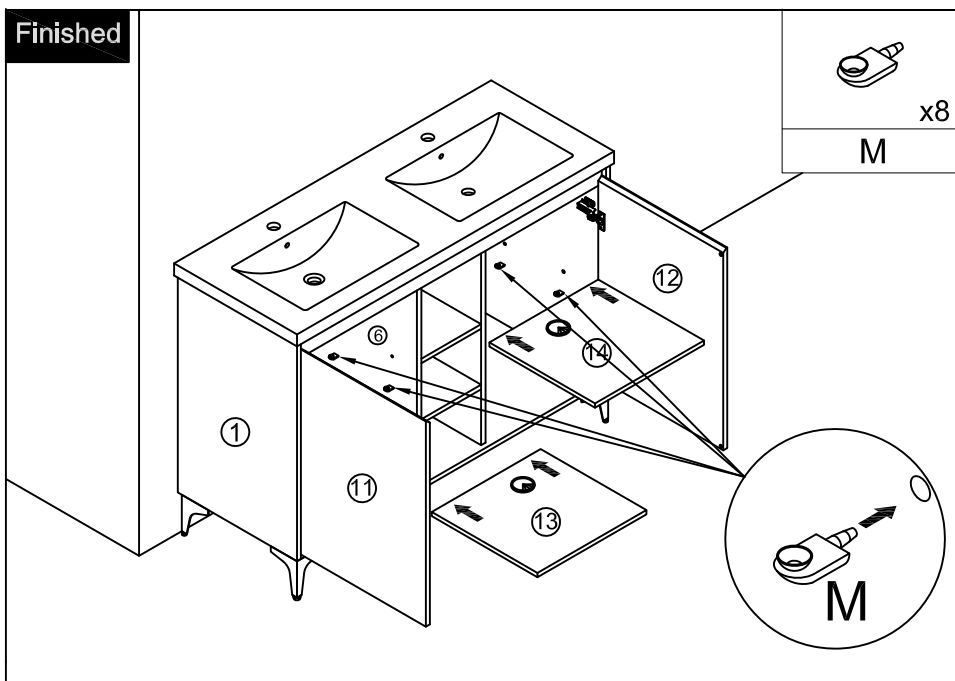
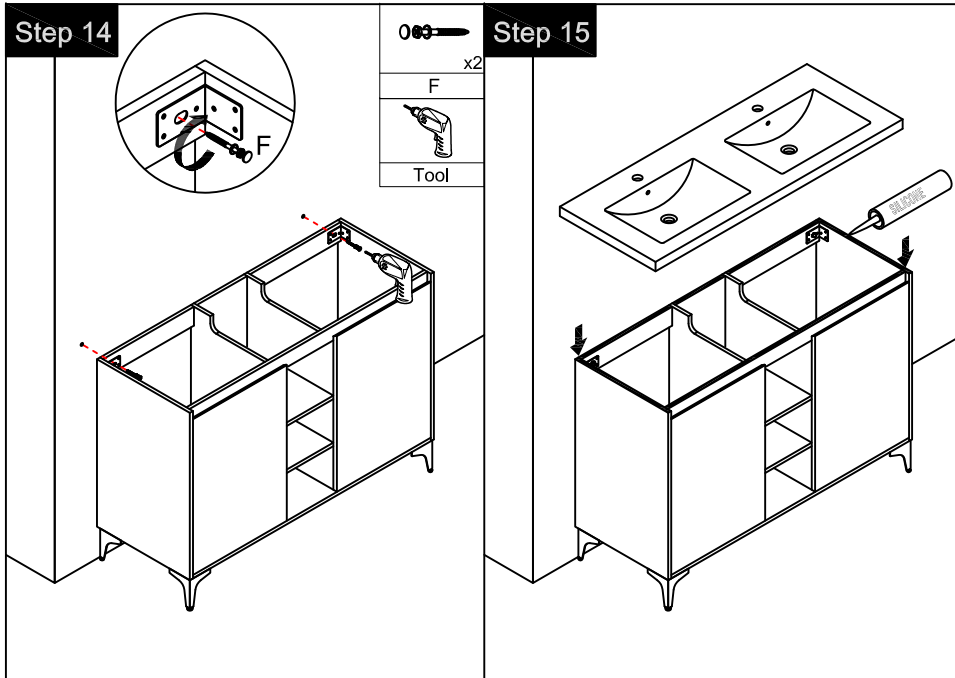


Front View

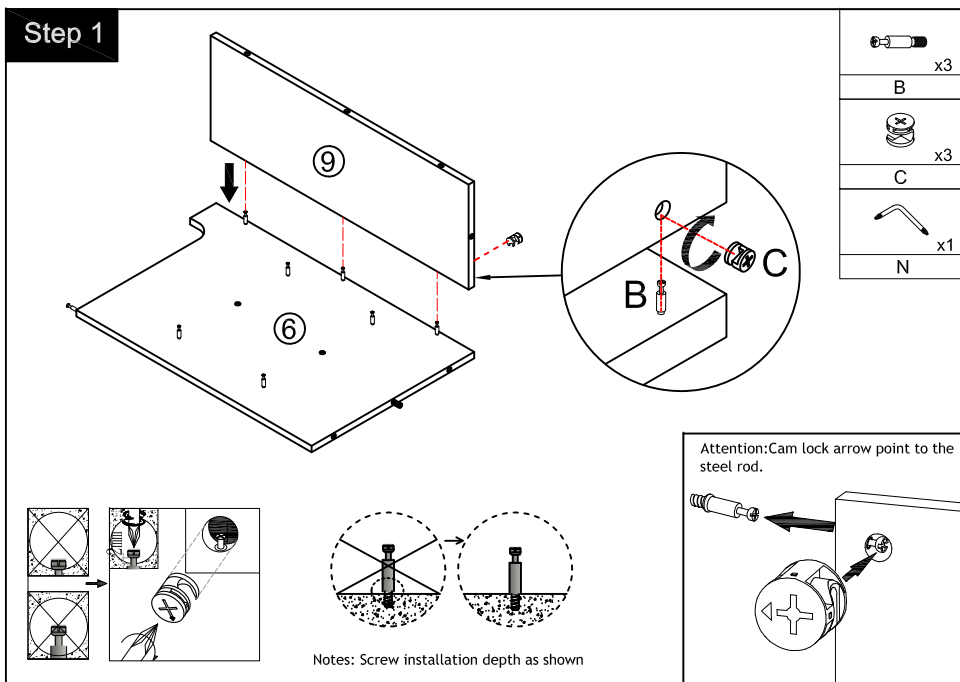
Floor

CARE CLEANING AND MAINTENANCE

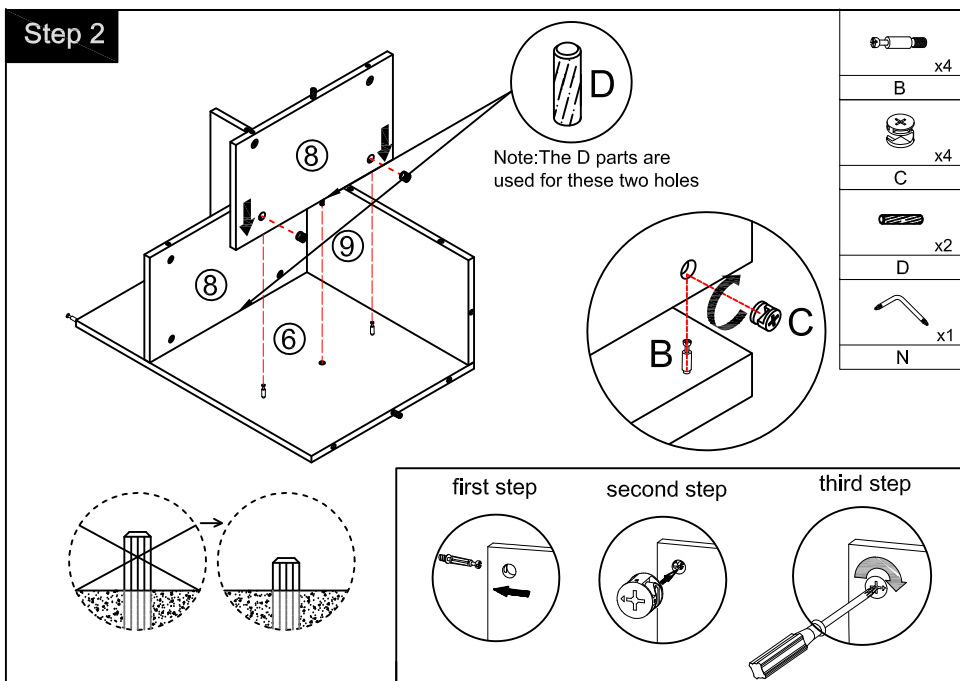
- 1.Dust regularly with a soft , dry cloth.
- 2.Avoid the use of all chemicals household cleaners, abrasives, or cleaners that contain lemon, vinegar, or other acids that may damage the finish.
- 3.Excessive exposure to sunlight and extreme changes in temperature and moisture can damage wood furniture.
- 4.The sink top is resilient, but care needs to be taken to preserve its appearance.
- 5.Do not place hot appliances, such as curling irons and hot hair dryers directly on the countertop. Wipe spills immediately.



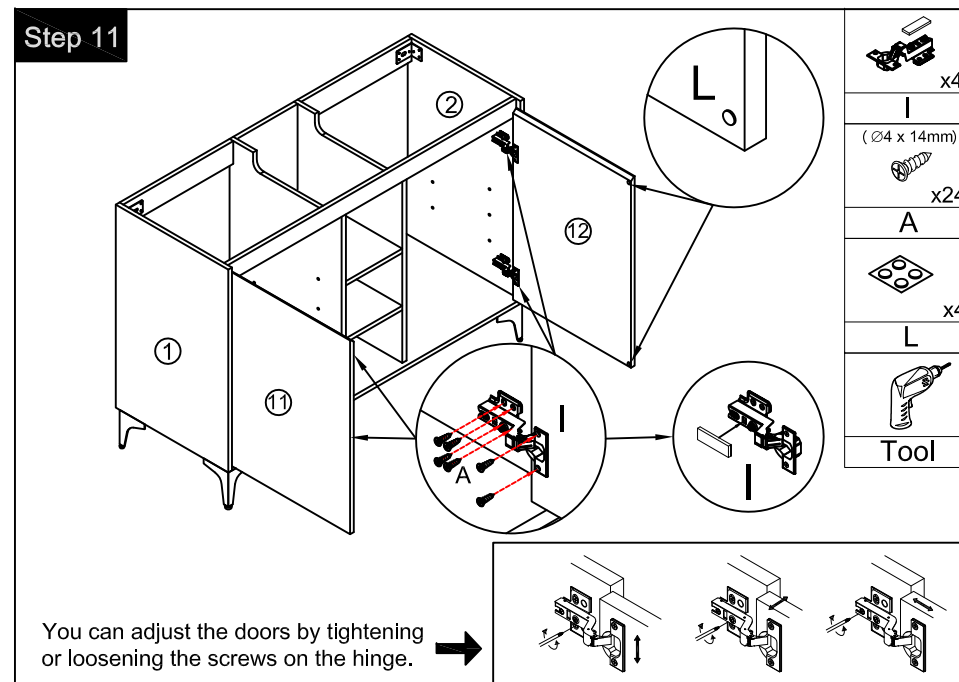
Step 1



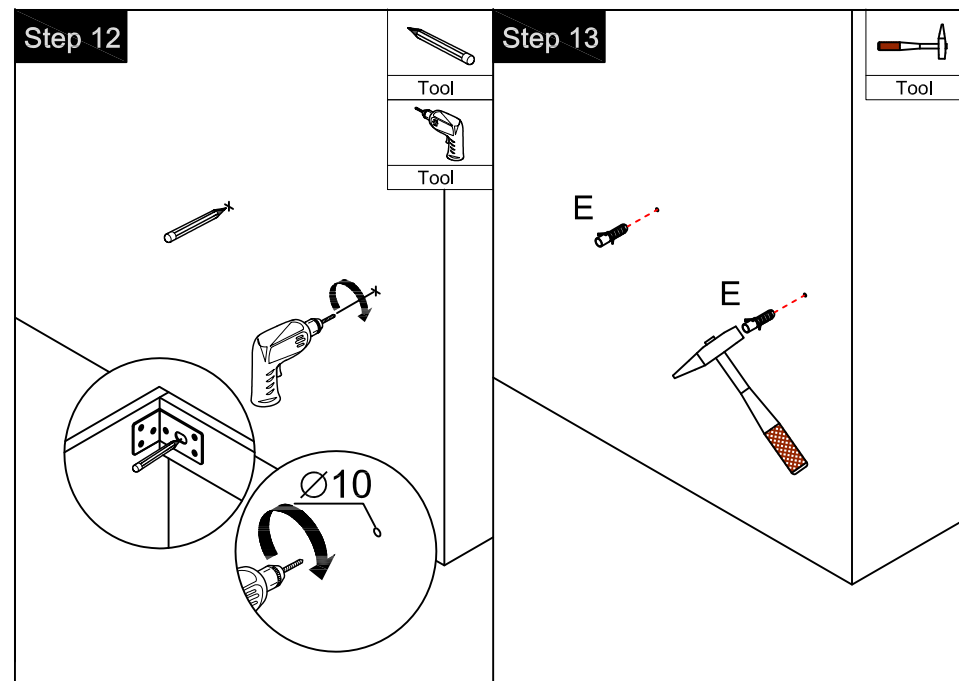
Step 2



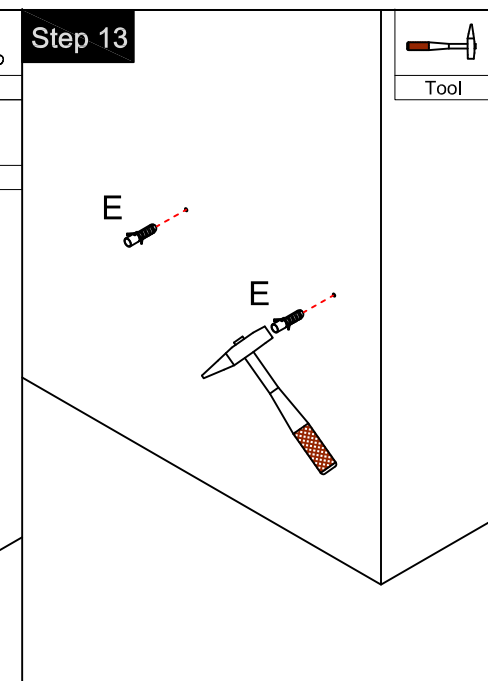
Step 11



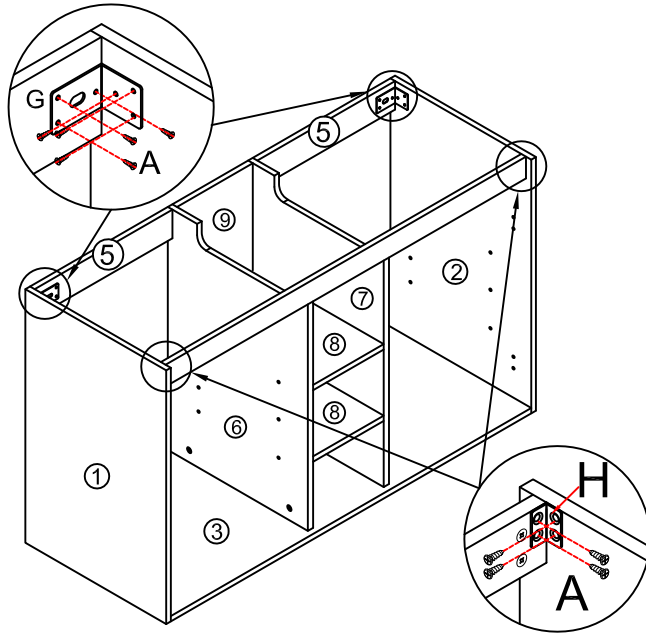
Step 12



Step 13

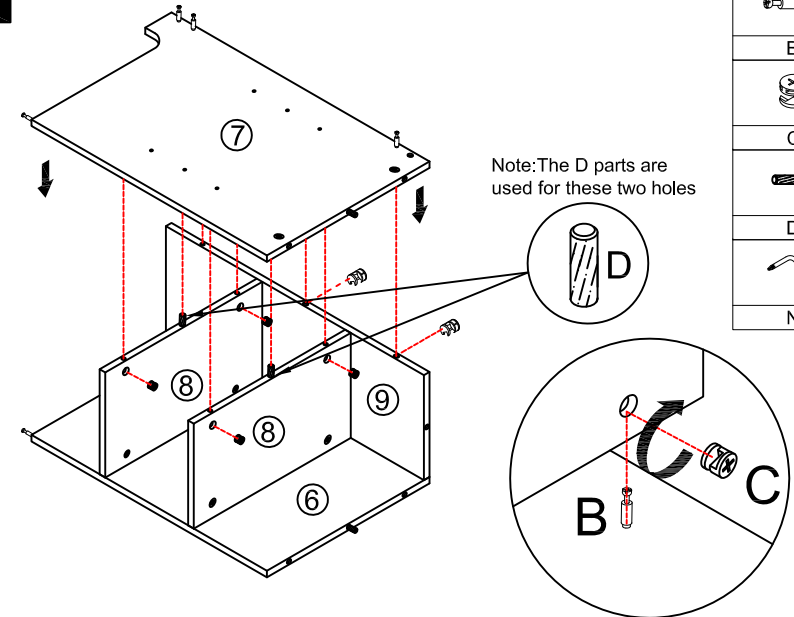


Step 9



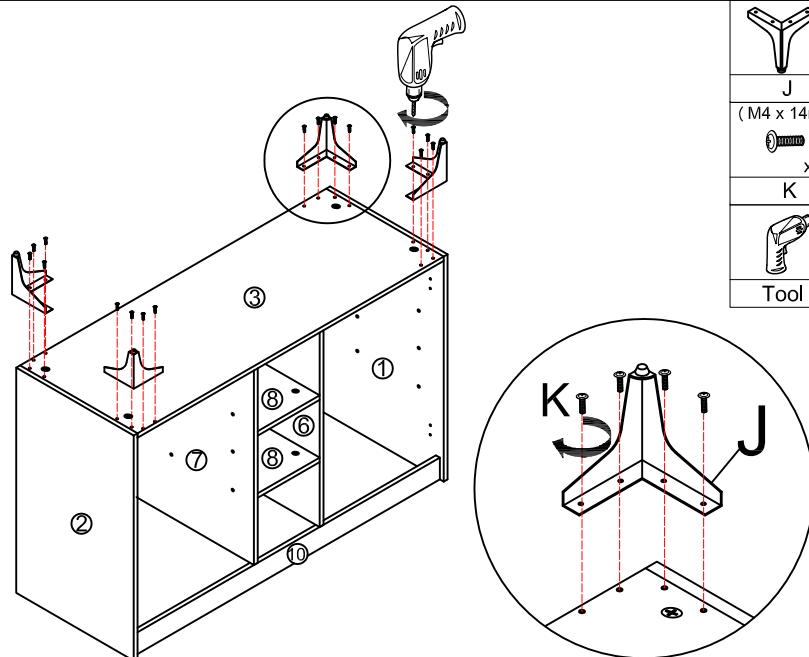
	x2
G	
	x2
H	
($\varnothing 4 \times 14\text{mm}$)	
	x20
A	
Tool	

Step 3



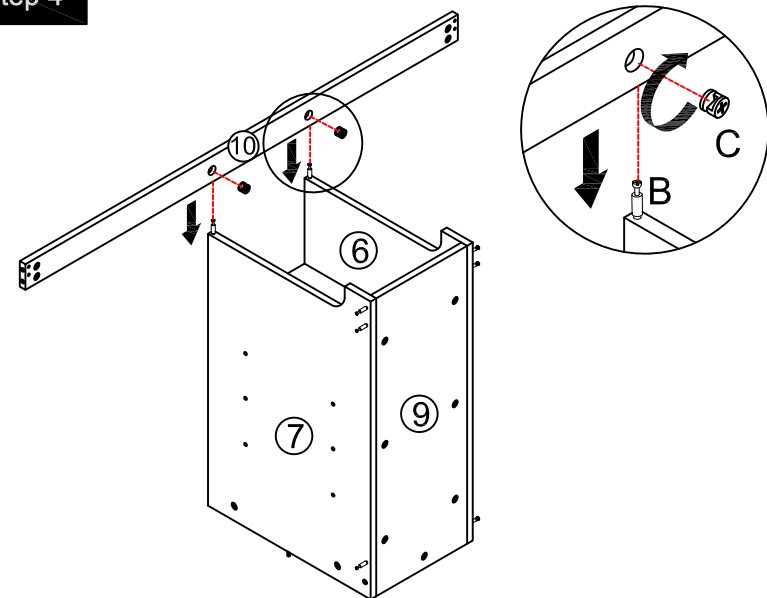
	x7
B	
	x7
C	
	x2
D	
	x1
N	

Step 10



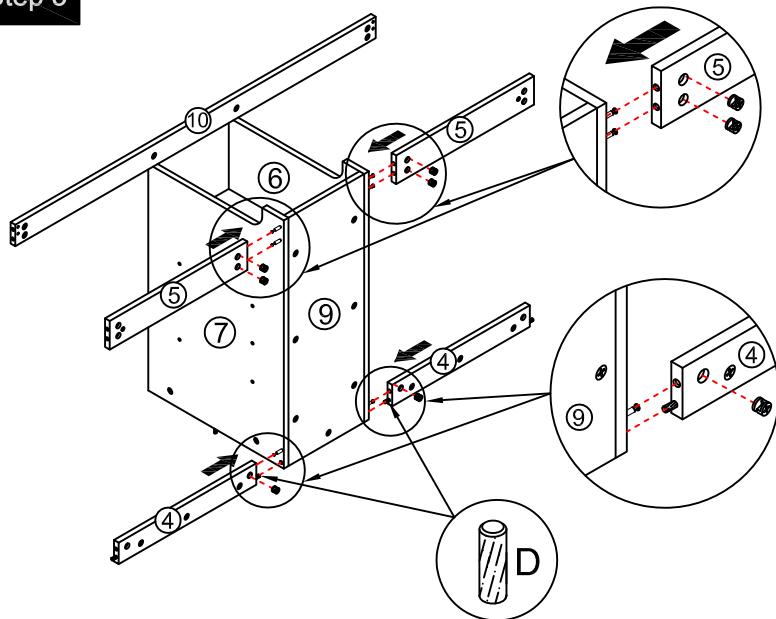
	x4
J	
(M4 x 14mm)	
	x16
K	
Tool	

Step 4



	x2
B	
	x2
C	
	x1
N	

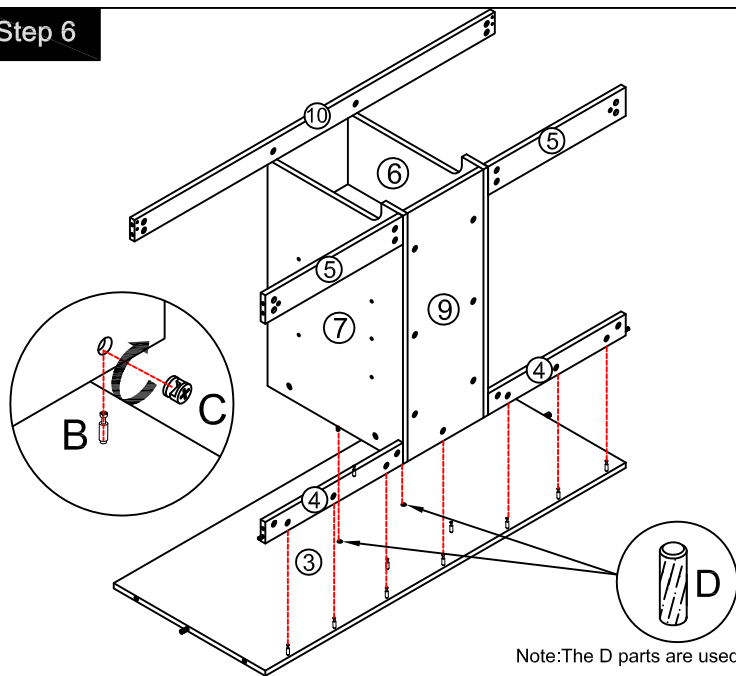
Step 5



	x6
B	
	x6
C	
	x2
D	
	x1
N	

Note: The D parts are used for these two holes

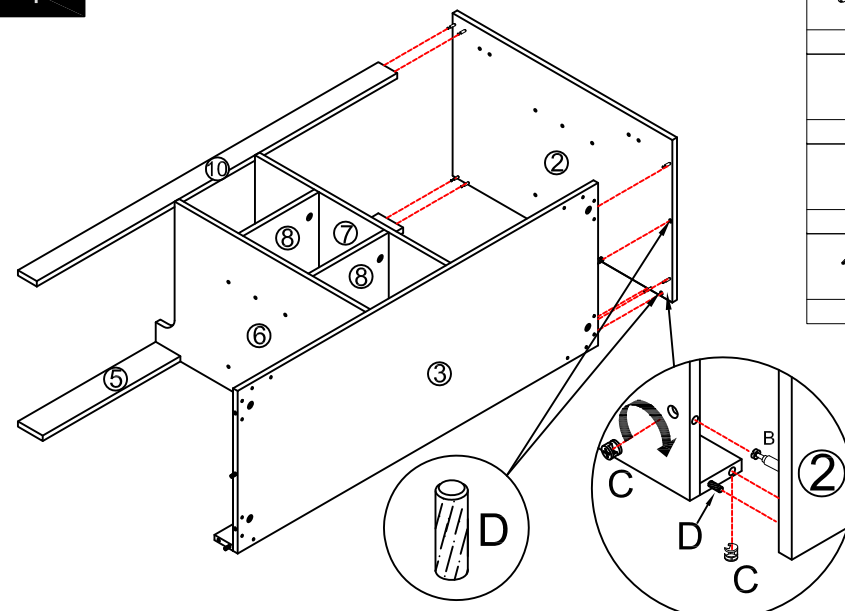
Step 6



	x11
B	
	x11
C	
	x2
D	
	x1
N	

Note: The D parts are used for these two holes

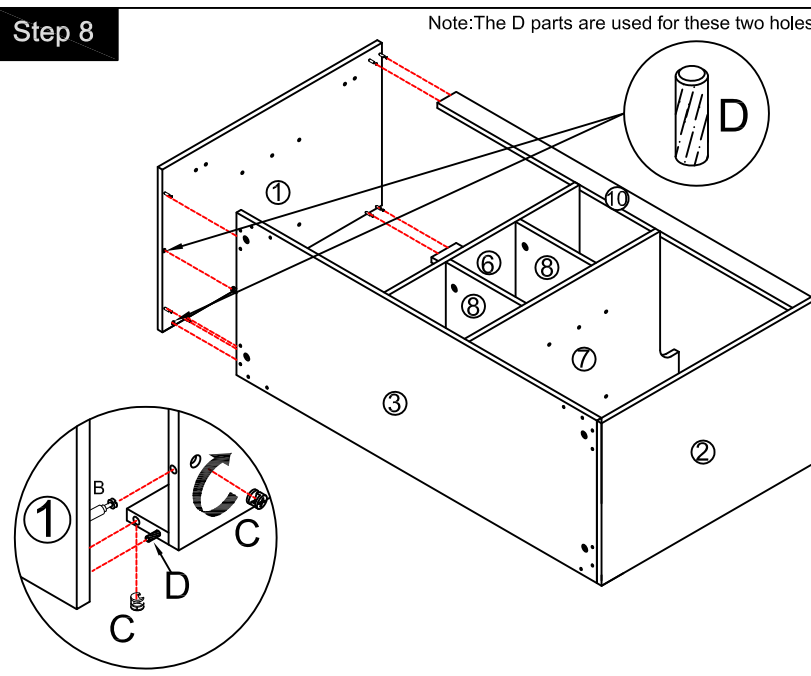
Step 7



	x7
B	
	x7
C	
	x2
D	
	x1
N	

Note: The D parts are used for these two holes

Step 8



	x7
B	
	x7
C	
	x2
D	
	x1
N	

Note: The D parts are used for these two holes