

P8061 SERIES

5IN LED New Construction and Remodel • Damp location listed



Description:

The P8061 is ideal for use in both new construction as well as remodel/retrofit. Light output is comparable to that of a typical 65W incandescent downlight, providing up to 75% energy savings. The P8061 is equipped with both Edison base adapter and quick link connector allowing easy installation in many standard incandescent recessed housings.

Specifications:

- Available in White, Bronze, Black and Brushed Nickel
- Diffused polycarbonate lens controls direct glare from the LEDs
- Easy "Push and Twist" installation with (3) friction spring clips
- Can be installed in most competitors 5" recessed housings
- Dimmable to 10% with many Triac/Forward Phase dimmers
- Suitable for use in IC or NON-IC Applications
- Provided with quick link for use with E26 Edison Base adapter
- Meets California Title 24 - JA8 - 2016.
- ENERGY STAR® qualified

Performance:

Input Power	10w
Input Voltage	120 V
Input Frequency	60 Hz
Lumens/LPW	713/71 (LM-79)
CCT	3000 K
CRI	90
Life (hours)	50,000 (L70/TM-21)
EMI/RFI	FCC Title 47, Part 15 Class B
Min. Start Temp	-30 °C
Max. Operating Temp	30 °C
Warranty	5 year warranty
Labels	cCSAus Damp location listed
	ENERGY STAR® qualified
	Meets California Title 24 - JA8 - 2016

Catalog number:

Base	Finish	Color Temp	CRI
P8061	09 - Brushed Nickel	30K - 3000 K	BLANK - 90
	20 - Antique Bronze		
	28 - Satin White		
	31 - Black		

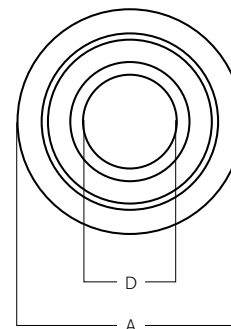
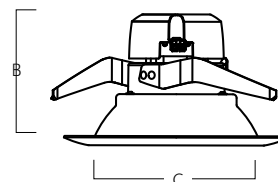
P8061-28-30K

Images:



Dimensions:

- (A) Outside Diameter: 6.2"
 (B) Height: 4"
 (C) Inside Diameter: 4.5"
 (D) Light Emitting Surface (LES): 2.75"



P8061 SERIES

5IN LED New Construction and Remodel • Damp location listed



Photometrics:

P8061-28-30K

ELECTRICAL DATA P8061-28-30K

Input Voltage	120 V
Input Frequency	60 Hz
Input Current	0.08 A
Power Factor	>0.90
THD	<20%
EMI Filtering	FCC 47CFR Part 15, Class B
Operating Temperature	-30 °C to 30 °C
Dimming	Yes*

Over-voltage, over-current, short-circuit protected

*See Dimming Notes for more information

P8061-28-30K

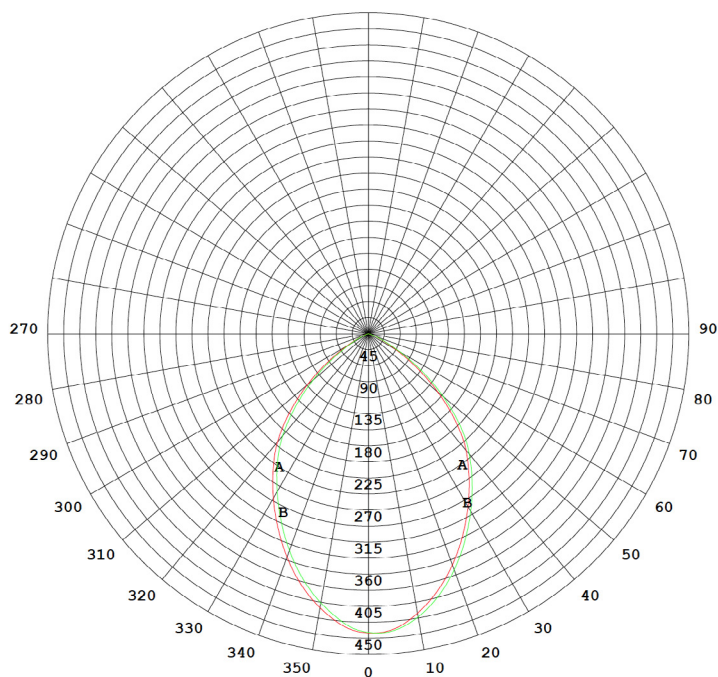
LED Light Engine: 3000 K, 90 CRI

System Wattage: 10

Fixture Delivered Lumens: 713

Fixture Efficacy: 71

Spacing Criteria: 1.0



ZONAL LUMEN SUMMARY

Zone	Zone Lumens	Total Lumens	% Luminaire
0-10	38.76	38.76	5.99
10-20	103.4	142.2	22
20-30	140.6	282.7	43.7
30-40	149.2	431.9	66.8
40-50	125.5	557.5	86.2
50-60	68.88	626.3	96.8
60-70	18.39	644.7	99.7
70-80	1.618	646.3	99.9
80-90	0.3587	646.7	100

P8061 SERIES

5IN LED New Construction and Remodel • Damp location listed



P8061-28-30K

Dimming Notes:

P8061 is designed to be compatible with many Triac/Forward Phase controls.

The following is a partial list of known compatible dimmer controls.

Triac/Forward Phase Controls

Lutron AYCL-153P

Lutron TGCL-153P

Leviton 6672

Leviton 6674

Leviton 6681

Dimming capabilities will vary depending on the dimmer control, load, and circuit installation. Always refer to dimmer manufacturer instructions or a controls specialist for specific requirements.

Dimmer control brand names where identified above are trade names or registered trademarks of each respective company.