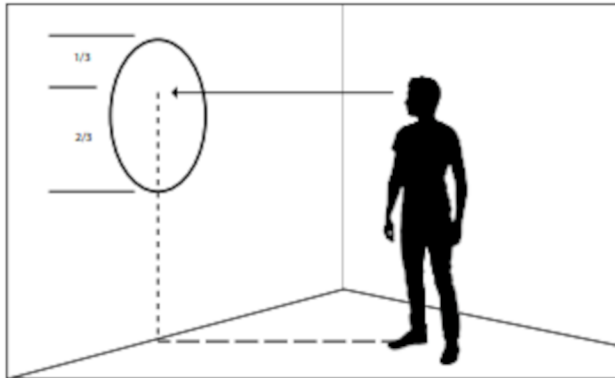


Installation Guide

(For installation we recommend two people)



How to position the mirror on the wall

1 Mark the position on the wall

Hold the mirror in your desired location on the wall. With a pencil, mark a line at the top-center of the mirror. Carefully set the mirror aside when finished.

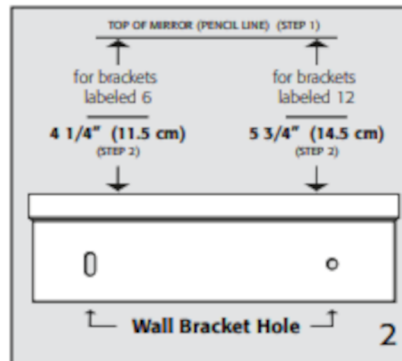


2 Position the wall bracket

- If your WALL BRACKET is labeled 6, position it so that the top of the bracket is 4 1/4" below the pencil line you marked in Step#1.
- If your WALL BRACKET is labeled 12, position it so that the top of the bracket is 5 3/4" below the pencil line you marked in Step#1.
- Use a level to ensure the wall bracket is level, then mark on the wall the position of the holes on the bracket.

Note: The holes should be on the bottom of the bracket when positioned on the wall.

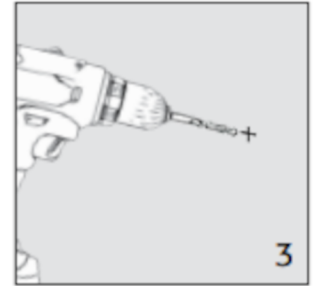
Continued →



3 Mount bracket on wall

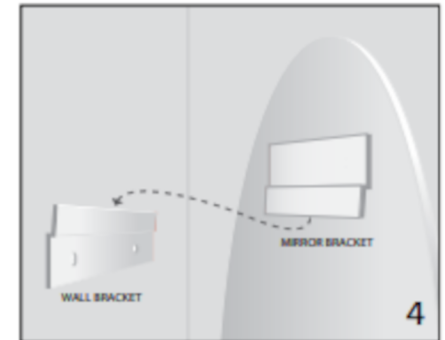
Using a 1/4" bit, drill pilot holes into the marked locations. Insert the provided anchors until flush with the wall surface. Place the wall bracket onto the wall and secure with the provided screws.

Apply the rubber bumpers near the bottom edges of the back of the mirror.



4 Hang your mirror

Carefully hang the mirror by placing the mirror mounting plate onto the wall bracket. Positioning can be adjusted side to side by gently sliding the mirror along the wall bracket.



Cleaning The Mirror

DO

- ✓ Clean the mirror with a soft, lint-free cloth and warm water.
- ✓ Be careful to not allow the edges of the mirror to become wet over time.
- ✓ Be sure to dry the edges thoroughly to be certain that no chemical cleaner meets the frame, mirror edge or backing.

NEVER DO

- ✗ Never spray any cleaner directly onto the mirror. Instead apply the cleaner to a soft cloth and then wipe the mirror.
- ✗ Never use commercial cleaners that contain ammonia, vinegar, acids, or alkalis. All of these can attack the surface, edges and back of the mirror resulting in a black edge.
- ✗ Never use an abrasive cleaner on any mirror surface.