

Assembly Instruction Sheet #IS-1094P26-12

For Style 1094P26-12

Tools Required: Flathead screwdriver, Phillips screwdriver, pliers, wire cutters, wire strippers, electrical tape, safety glasses.

Light Source: (12) G9 40W Maximum(Not Include).

Estimated Assembly Time: 30-40 minutes

Preparation: Identify and inspect all parts before beginning installation. Check package content list and diagrams below to be sure all parts are present. If any parts are missing or damaged, do not attempt to assemble, install, or operate the fixture. Contact customer service for replacement parts.

⚠ Warnings and Cautions

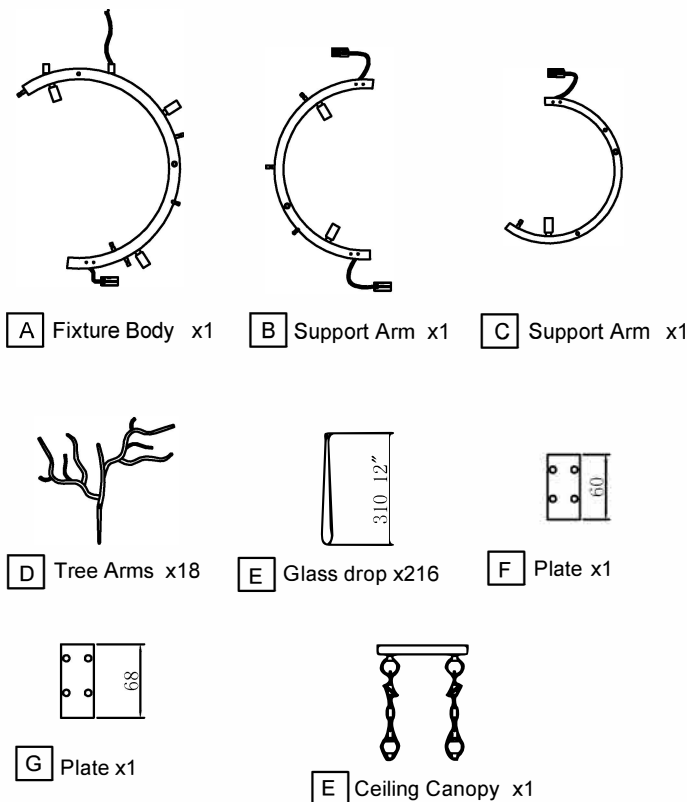
Turn off electricity at circuit breaker or main fuse box before installation. Consult a licensed electrician if in doubt.

These instructions are provided for your safety. It is very important you read them completely before installing the fixture.

We strongly recommend that a licensed, professional electrician perform the installation.

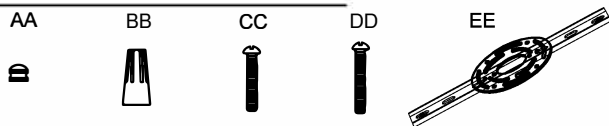
Disconnect fixture from power source before replacing bulbs. Make sure bulbs are given sufficient time to cool before removal.

Package Contents



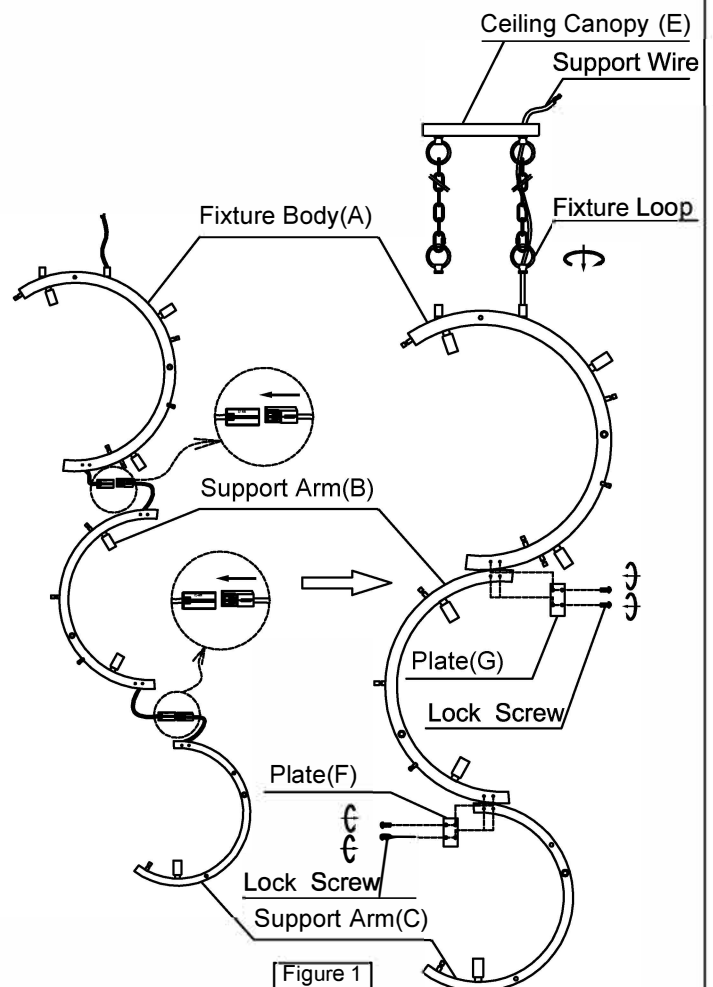
Hardware Contents

PART	DESCRIPTION	QUANTITY
AA	Cap nut	2pcs
BB	Wire nut	2pcs
CC	Outlet Box Screw	2pcs
DD	Mounting Screw	2pcs
EE	Mounting bracket	1pcs



STEP 1 - Install Support Arm and Ceiling Canopy.

A. Assemble the Fixture Body A, Support Arm B and Support Arm C together accordingly to the below picture showing. First connect the wire connector together, then hide those connector into the Arms, be careful for the scratching. Then use the plate F And G to screw up Fixture Body A with Support Arm B and C.



STEP 2 - Attach Mounting Screws, Lock Washers and Hex Nuts to Mounting bracket.

- A. Line up a set of holes on the Mounting bracket (EE) and Holes on the ceiling canopy. Thread Mounting Screws (DD) into the holes on the Mounting bracket (EE). Pass Lock Washers and thread Hex Nuts onto the Mounting Screws (DD). Hand tighten until snug.

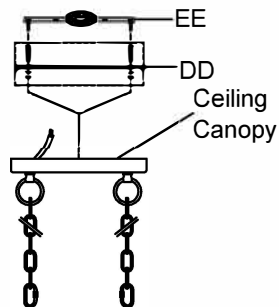


Figure 2

STEP 3 - Attach Mounting bracket to Outlet Box

- A. Pass the supply wires through the Mounting bracket (EE). Attach the Mounting bracket (EE) to the Outlet Box with the head of the Green Ground Screw facing you. Secure it with Outlet Box Screws (CC). Tighten until snug.

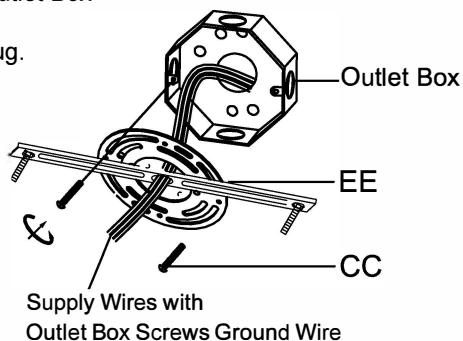


Figure 3

STEP 4 - Fit Ceiling Canopy to Mounting bracket Assembly

- A. Fit the ceiling canopy to Mounting Screws (DD) and secure with Cap nut (AA). Note: The ceiling canopy should be snug against the ceiling and the Cap nut (AA). If not, adjust the length of the Mounting Screws (DD) by unscrewing the Hex Nut and Lock Washer and then screwing Mounting Screws (DD) in or out of the Mounting bracket (EE) until the correct length is achieved. Once the ceiling canopy is secure, remove the Cap nut (AA) and ceiling canopy and proceed to Step 5.

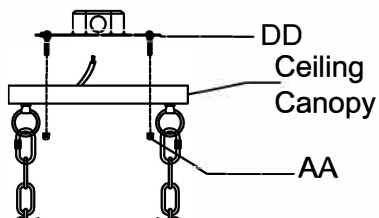


Figure 4

STEP 5 - Wire Connections

- A. Use standard wire connectors to make all wire connections. Twist connectors until wires are tightly joined together. Wrap each connection with approved electrical tape and carefully stuff all the connected wires into the Outlet Box.

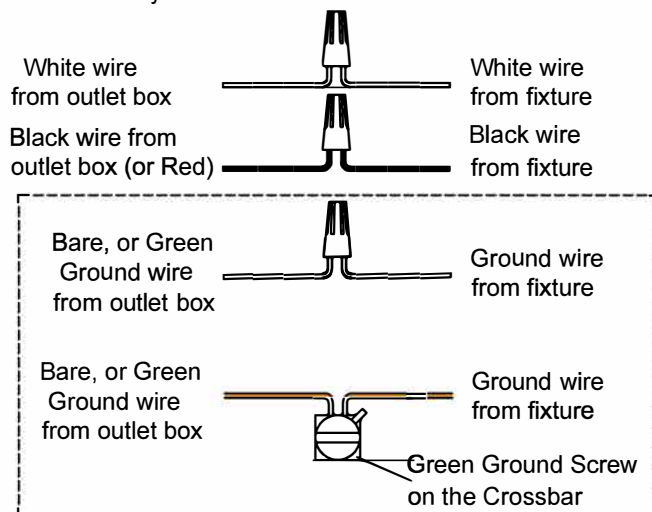


Figure 5

STEP 6 - Install Ceiling Canopy to Ceiling

- A. Carefully tuck all wires into the outlet box and position the ceiling canopy of the Fixture Body (A) over the outlet box. Align the holes in the ceiling canopy with the Mounting Screws (DD). Secure with Cap nut (AA) and hand tighten until snug.

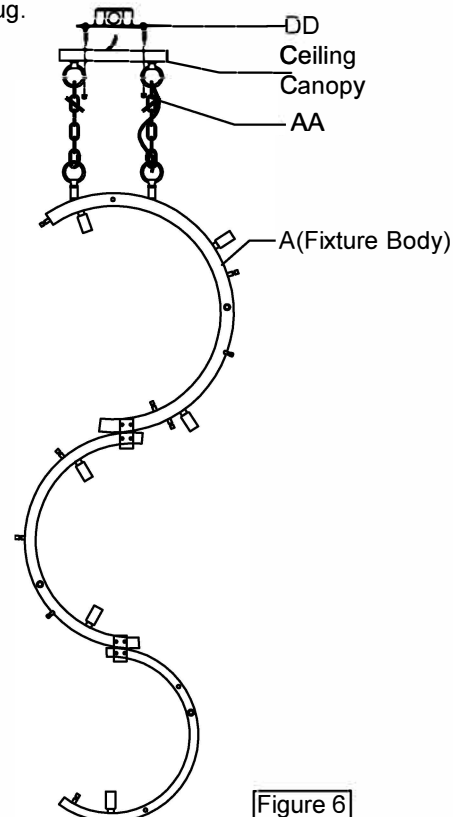


Figure 6

STEP 7 - Install Tree Arms ,Glass drop and Bulbs.

- A. Insert the Tree Arms (D) into the Fixture Body (A) then use the screws to fix them together.
- B. Install bulbs onto sockets and push snug into place.
- C. Please put the Glass drop (E) to the Fixture Body (A) .

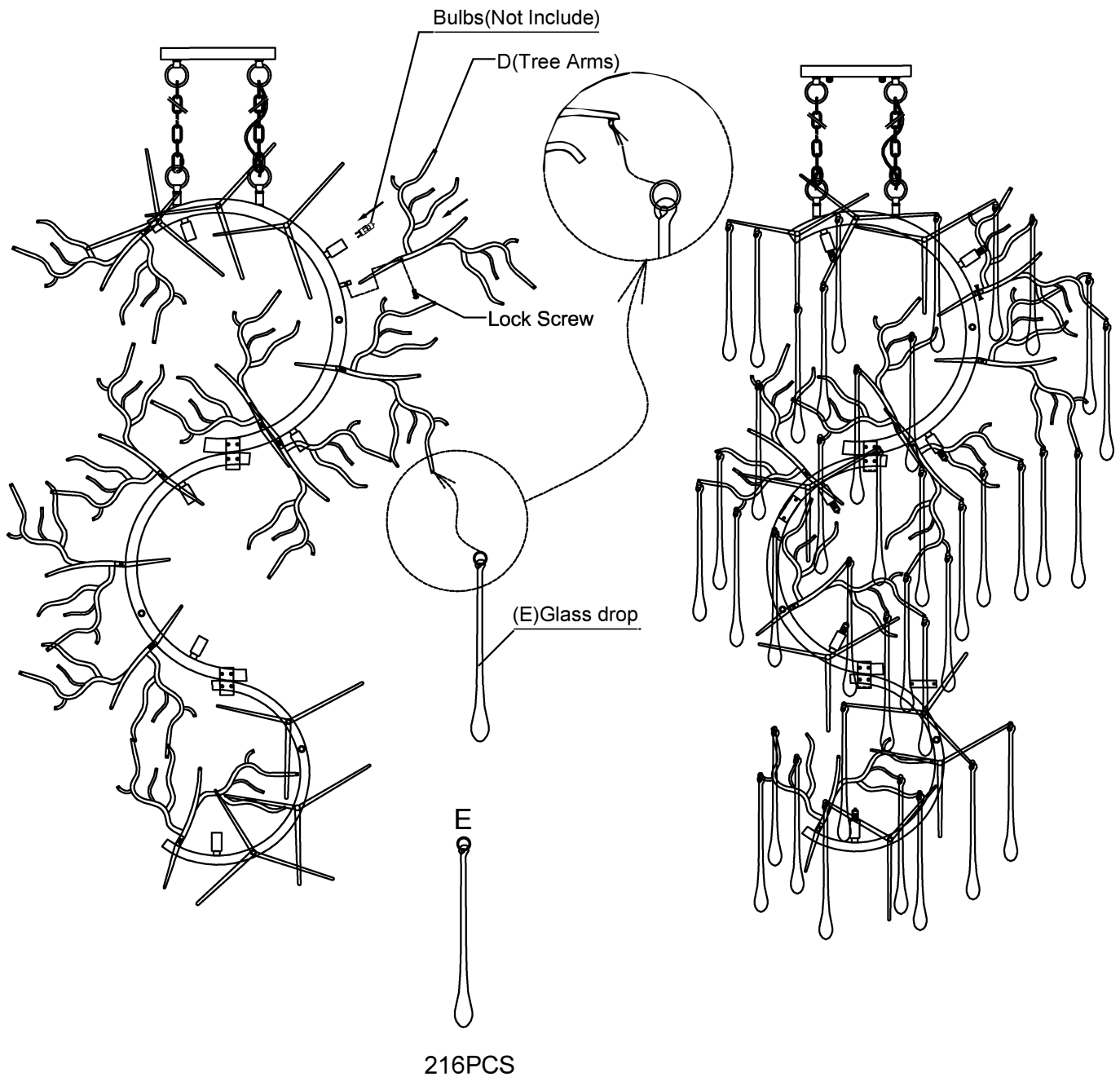


Figure 7

A. Note: Please assemble the frame ready then start to hang the drops. Once you find the tree arms overlap together like figure 7 & figure 8 , then you do not need to hang the drops on the tree arms.

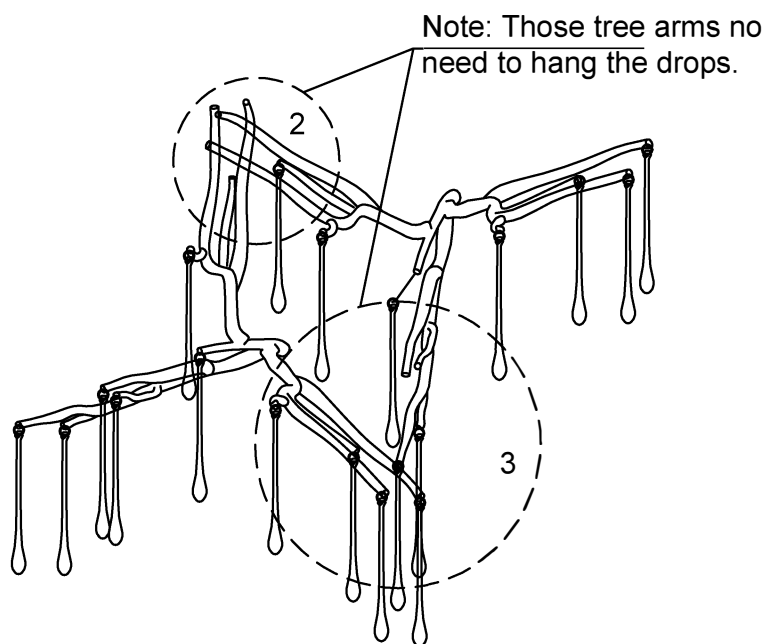
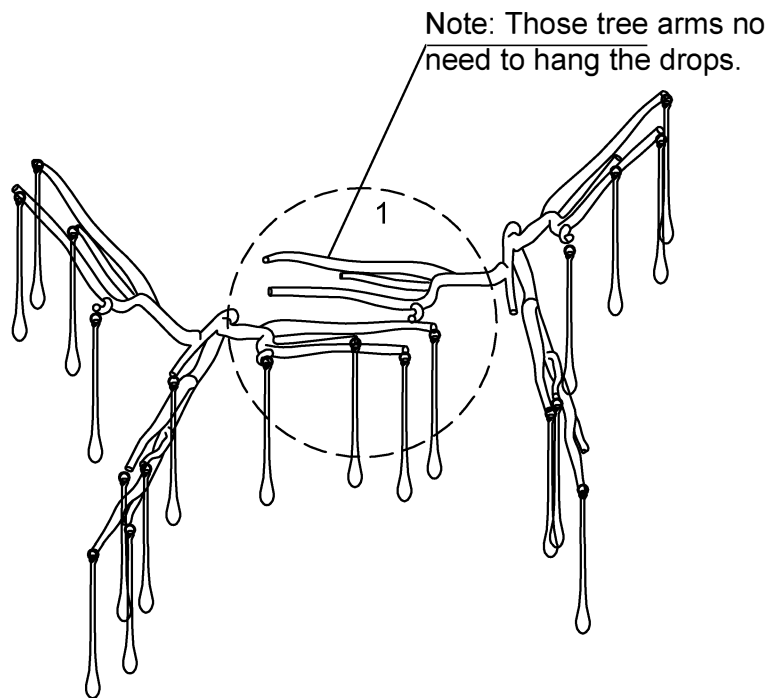


Figure 8