

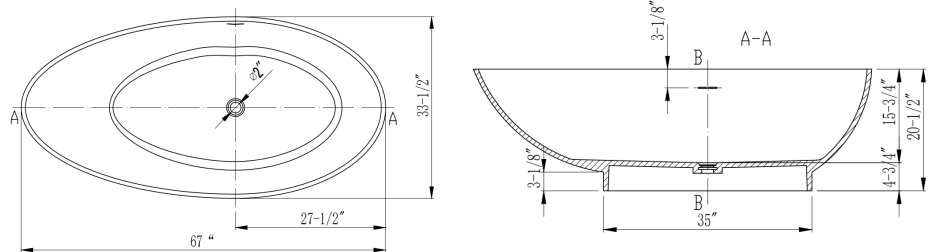
BATHTUB INSTALLATION INSTRUCTION

NOTE: Due to the nature of the material, models can differ up to 20mm from the listed dimensions.

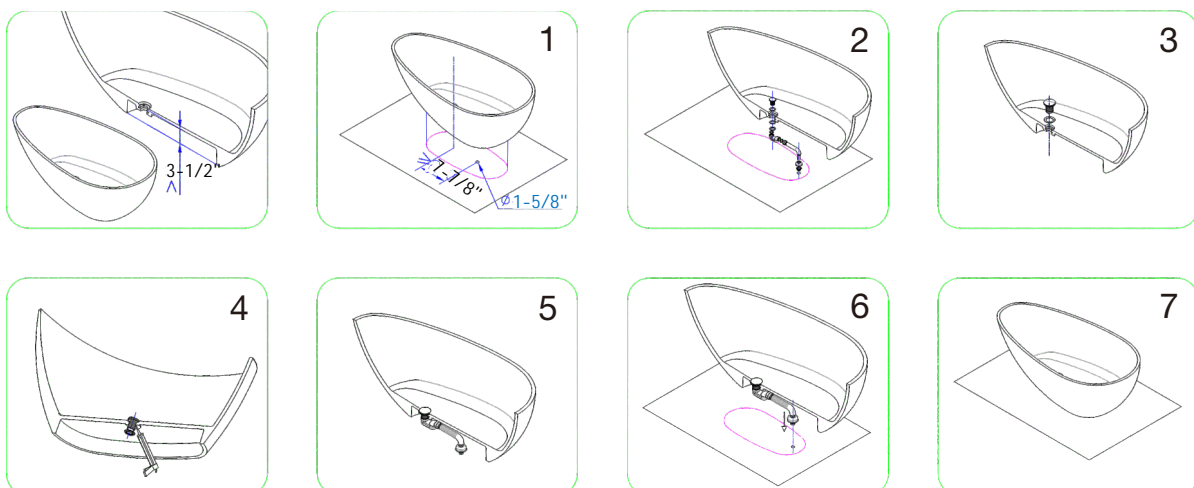
PACKING LIST
- Bathtub
- Drain Pipe

NOMINAL DIMENSIONS

MODEL#	BATHTUB SIZE
20S01101-67	67"*33-1/2"*20-1/2"



Installation step diagram



CARE AND MAINTENANCE

ALWAYS

- Clean everyday by thoroughly rinsing with a mild soap and warm water and wipe dry.
- Keep the sink free of any standing water as this can cause a buildup of mineral deposit, which can affect the appearance of your sink.
- Always rinse the sink after using any cleaning agent and wipe dry. Clean any mineral deposits built up over time with a mild solution of vinegar and water followed by a thorough flushing with water.

NEVER

- Use a steel wool or scouring pad as it damages the sink surface and causes discoloration.
- Let household cleaning agents or bleach sit in your sink for a long period of time as this may ruin the finish of your sink
- Leave rubber mats, sponges, or cleaning pads in the sink for long period of time as this may ruin the finish of your sink
- Use the inside of the sink as cutting surface.